

“TRICKER TREATERS CROSSING” HSS-01 HALLOWEEN STREET SIGN COLLECTION



CANVAS DESIGN BY KIMBERLY ANN NEEDLEPOINT
STITCH GUIDE DESIGN & STITCHING BY KIMBERLY ANN NEEDLEPOINT
DIAGRAMS BY KIMBERLY ANN NEEDLEPOINT

Photocopying of this stitch guide is invited.
Production by Kimberly Ann Needlepoint.
WWW.KIMBERLYANNNEEDLEPOINT.COM

THREAD: “TRICKER TREATERS CROSSING” HSS-01

<u>COMPANY</u>	<u>NAME</u>	<u>NUMBER</u>	<u>*QUANTITY</u>
KIMBERLY ANN NEEDLEPOINT	Tricker Treaters Crossing	HSS-01	1
RAINBOW GALLERY	PETITE SPARKLE RAYS	PS77	1
RAINBOW GALLERY	PETITE SPARKLE RAYS	PS78	1
RAINBOW GALLERY	SPLENDOR	S1130	1
RAINBOW GALLERY	PETITE SPARKLE RAYS- GLOW IN DARK	PS300	1
RAINBOW GALLERY	SILK LAME BRAID- 18 CT	SL65	1
RAINBOW GALLERY	PETITE VERY VELVET	V601	1
RAINBOW GALLERY	PETITE SPARKLE RAYS	PS78	1

*Please note recommended thread is based on expected usage. Individual-stitch technique/style may vary.

<u>ADDITIONAL TOOLS NEEDED:</u>
*SIZE 20 TAPESTRY NEEDLE
<u>RECOMMENDED TOOLS:</u>
STRETCHER BARS
BRASS TACKS
SMALL NEEDLEPOINT SCISSORS

STITCH GUIDE: “TRICKER TREATERS CROSSING” HSS-01

<u>DESIGN AREA</u>	<u>THREAD</u>	<u>NUMBER</u>	<u>STRANDS</u>	<u>STITCH</u>	<u>NOTES</u>
ORANGE BACKGROUND:	R.G. - PETITE SPARKLE RAYS	PS77	1	HORIZONTAL MILANESE	*SEE CHART- 2 COLORS INTERCHANGED ON THE STITCH.PS77 FOLLOW NUMBERS/WHITE FILL ON CHART. PS78 FOLLOW LETTERS/GRAY FILL ON CHART.
	R.G. - PETITE SPARKLE RAYS	PS78	1	HORIZONTAL MILANESE	
BLACK BOARDER	R.G. - SILK LAME BRAID	SL65	1	SEE CHART	AS SEEN ON CHART~ MODITIFY STITCH AT CORNERS.
ORANGE BOARDER	R.G. - PETITE SPARKLE RAY	PS78	1	SEE CHART	AS SEEN ON CHART~ MODITIFY STITCH AT CORNERS.
GHOST: WHITE FILL IN	R.G. - PETITE SPARKLE RAY G.DARK	LBI67	1	T-STITCH	
TREAT BAG: TOP OPENING	R.G. - SILK LAME BRAID	SL65	1	TENT	
TREAT BAG: PURPLE FILL IN	R.G. - SPLENDOR	SI130	4	INTERLOCKING GOBELIN	
LETTERING & BLACK OUTLINE OF GHOST & TREAT BAG	R.G. - PETITE VERY VELVET	V601	1	TENT	

*****SHARE YOUR STITCHING AND FOLLOW KIMBERLY ANN NEEDLEPOINT ON INSTAGRAM!*****

@KIMBERLYANNNEEDLEPOINT

#KIMBERLYANNNEEDLEPOINT #HALLOWEENSTREETSIGNS #FREESTITCHGUIDE

ORANGE BACKGROUND: HORIZONTAL MILANESE

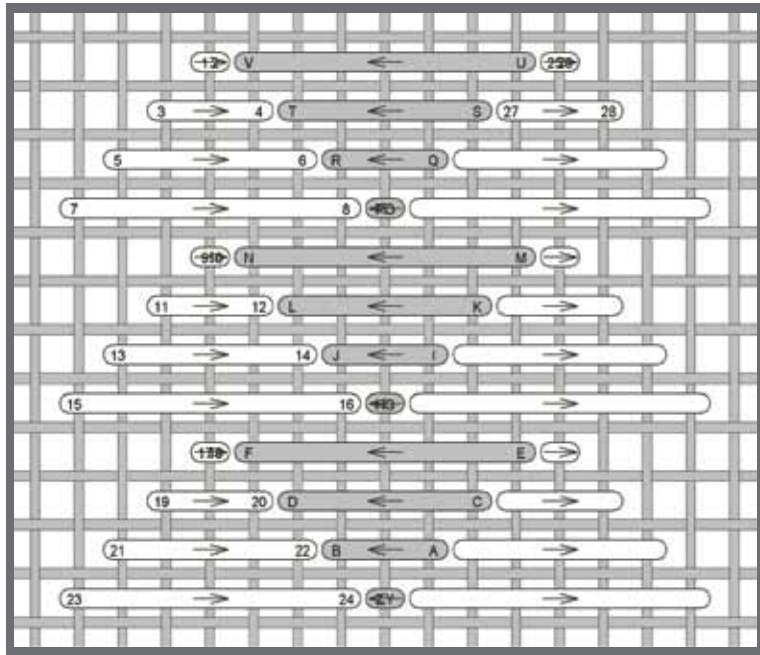


IMAGE KIMBERLY ANN NEEDLEPOINT

BLACK BORDER: BLACK BOARDER:

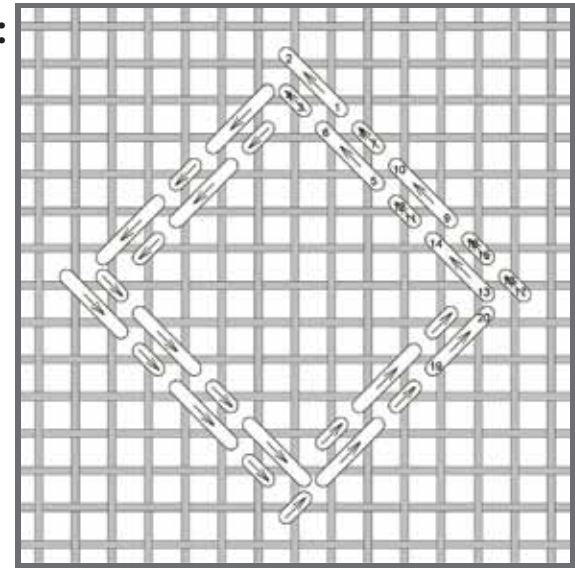


IMAGE KIMBERLY ANN NEEDLEPOINT

ORANGE BORDER: CORDUROY STITCH (MODIFIED OVER 2)

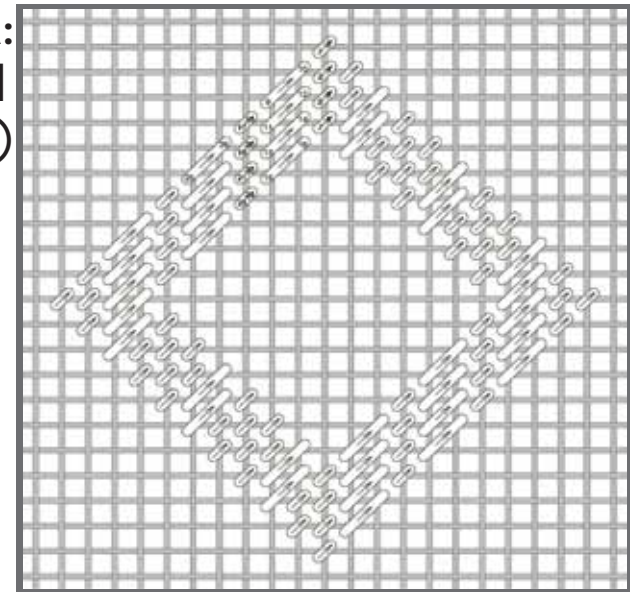


IMAGE KIMBERLY ANN NEEDLEPOINT

**GHOST~ WHITE FILL IN AREA:
T-STITCH**

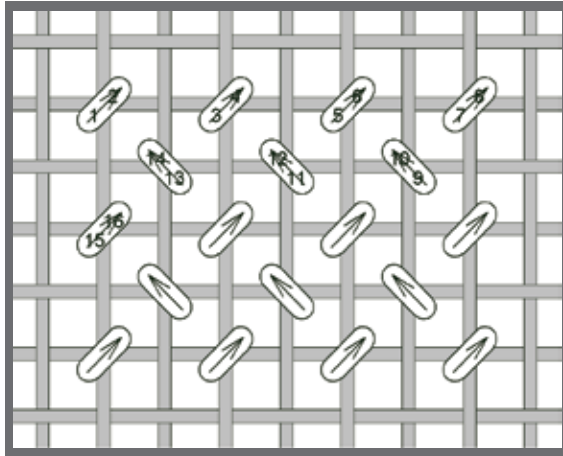


IMAGE KIMBERLY ANN NEEDLEPOINT

**TREAT BAG~PURPLE FILL IN AREA:
INTERLOCKING GOBELIN**

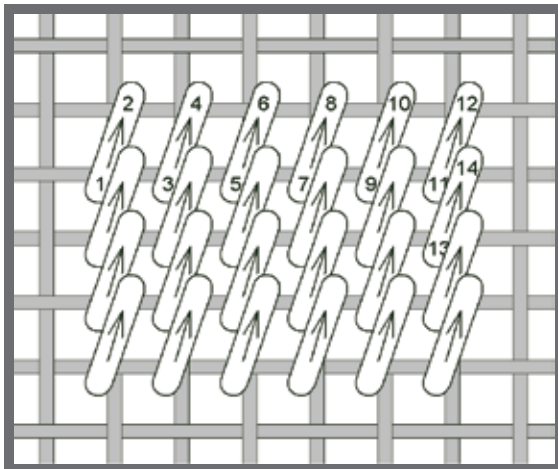


IMAGE KIMBERLY ANN NEEDLEPOINT

**LETTERING, BLACK OUTLINE OF GHOST
& OUTLINE OF TREAT BAG: TENT STITCH**

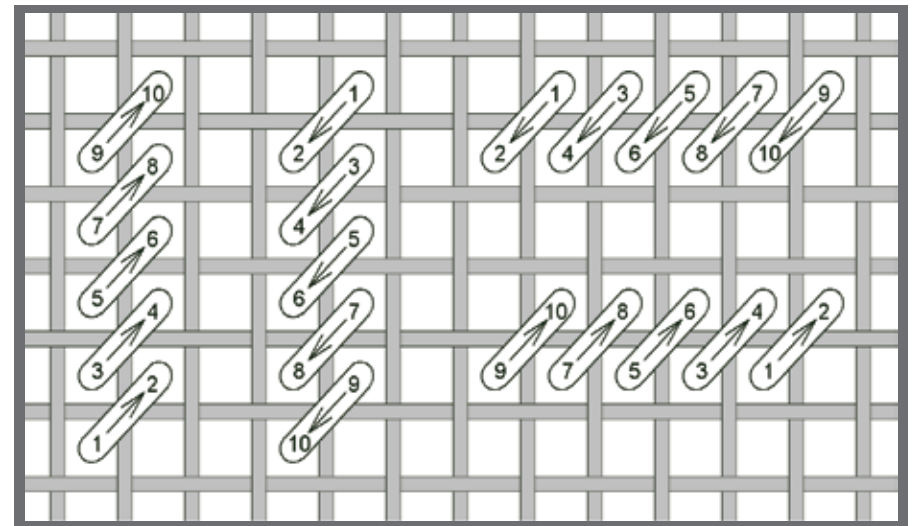


IMAGE KIMBERLY ANN NEEDLEPOINT