

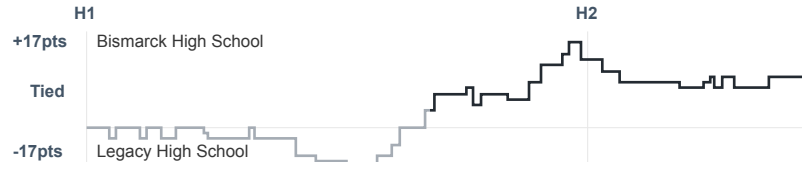
### Box Score Report

Bismarck High School vs Legacy High School - Jan 11, 2018 - W 58-45

#### Period Stats

	1	2	
<b>BHS</b>	<b>35</b>	<b>23</b>	<b>58</b>
LHS	23	22	45

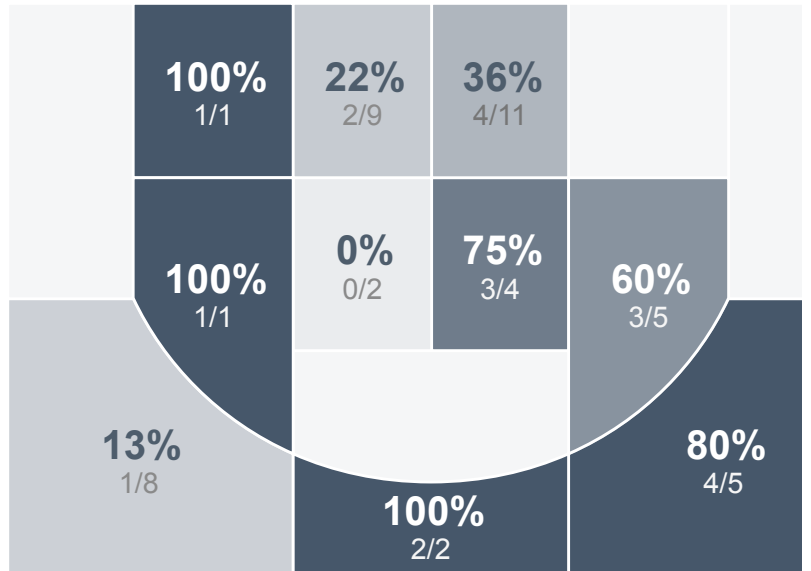
#### Run Graph



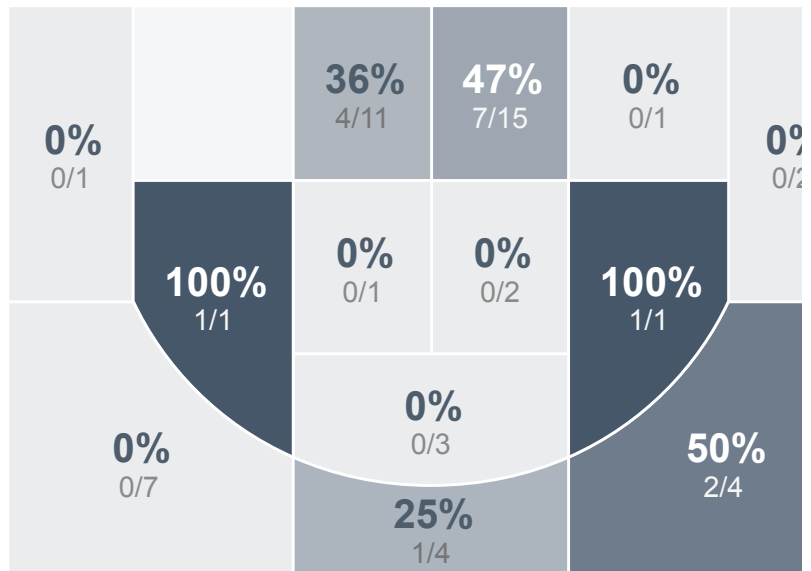
Team Stats

	BHS	LHS
FG Made/Attempted	21/48	16/53
Field Goal %	43.8%	30.2%
Effective Field Goal %	51.0%	33.0%
2FG Made/Attempted	14/33	13/35
2FG %	42.4%	37.1%
3FG Made/Attempted	7/15	3/18
3FG %	46.7%	16.7%
FT Made/Attempted	9/12	10/14
Free Throw %	75.0%	71.4%
Points Per Possession	0.88	0.67
Transition Points	7	0
Points Off Turnovers	14	14
Second Chance Points	7	7
Points in the Paint	18	22
Offensive Rebounds	6	8
Defense Rebounds	28	22
Assists	8	6
Deflections	6	7
Steals	9	12
Blocks	2	1
Turnovers	18	16
Personal Fouls	12	11
Charges Taken	0	1

Bismarck High School



Legacy High School



## Bismarck High School's Player Stats

Name	Pts	FG	3FG	FT	+/-	MINS	OREB	DREB	AST	DEFL	STL	BLK	TO	FOUL
#3 Mady Mosolf	3	1/7	1/5	0/0	+ 13	36	0	2	0	0	2	0	1	3
#11 Maddy Steckler	0	0/4	0/2	0/0	+ 15	28	1	4	3	2	2	0	7	2
#15 Hannah Golus	9	4/6	1/1	0/0	+ 14	19	1	2	1	2	0	0	2	2
#20 Cadee Ryckman	18	7/11	3/5	1/2	+ 12	30	1	5	1	1	2	0	3	1
#21 Danielle Korsmo	2	0/0	0/0	2/2	- 2	3	0	3	1	0	1	0	0	1
#25 Olivia Dickerson	6	3/8	0/0	0/0	- 4	19	2	4	0	1	2	0	1	1
#33 Makensie Maher	7	2/4	1/1	2/2	+ 2	16	0	0	1	0	0	0	1	1
#34 Megan Henderson	13	4/8	1/1	4/6	+ 15	33	0	4	1	0	0	2	3	1

## Legacy High School's Player Stats

Name	Pts	FG	3FG	FT	+/-	MINS	OREB	DREB	AST	DEFL	STL	BLK	TO	FOUL
#10 Ashley Hulm	6	2/8	0/1	2/2	0	16	1	2	0	3	1	1	4	1
#11 Kailey Weigel	1	0/5	0/4	1/2	- 3	24	0	5	2	0	0	0	0	1
#12 Mac Boone	2	0/1	0/1	2/2	+ 3	5	0	0	0	1	1	0	1	0
#13 Alexis Dressler	6	2/7	2/5	0/0	- 10	27	2	4	0	0	0	0	3	2
#15 Taryn Allmaras	18	8/14	1/2	1/2	- 13	36	3	6	1	2	6	0	4	2
#20 Whitney Thomas	7	3/11	0/2	1/2	- 15	33	2	1	2	1	1	0	0	0
#23 Allison Nieuwenhuis	0	0/1	0/0	0/0	- 11	12	0	0	0	0	1	0	2	0
#31 Maggie Woodbury	0	0/1	0/0	0/0	+ 1	0	0	0	1	0	0	0	0	2
#34 Sydney Dollinger	0	0/0	0/0	0/0	+ 1	0	0	0	0	0	0	0	0	0
#35 Arianna Berryhill	5	1/5	0/3	3/4	- 18	27	0	3	0	0	2	0	2	3