

The Greatest Story Ever Told: The Second Sun

There is a cataclysmic event about to unfold which we will have no control over.

'Enhanced' Southwestern Rock Art



Infrared Photo of the Sun Jan 7, 2015

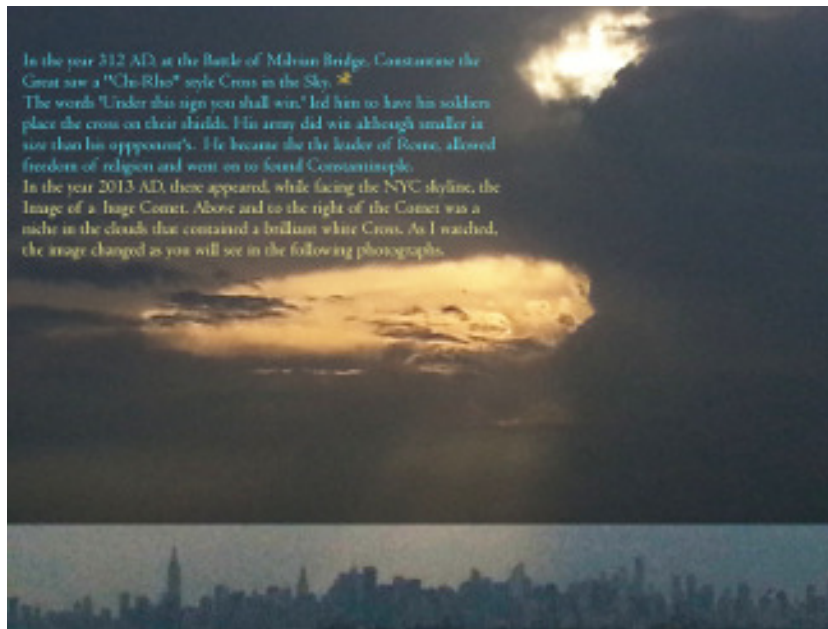


There have been legends of a celestial body known as 'Planet-X' to modern astronomers, 'Nibiru' to the ancient Sumerians in Mesopotamia or the 'Destroyer' in ancient Egypt. It is a mini Solar System; our Sun's binary companion star, a Brown Dwarf Star, at its center with a number of planets. The system is on a 3,600 year elliptical orbit of our sun. It has returned to the area of our Sun and rounding the Sun, is ready to head back out again into deep space. The Earth and everything on it are in imminent peril.

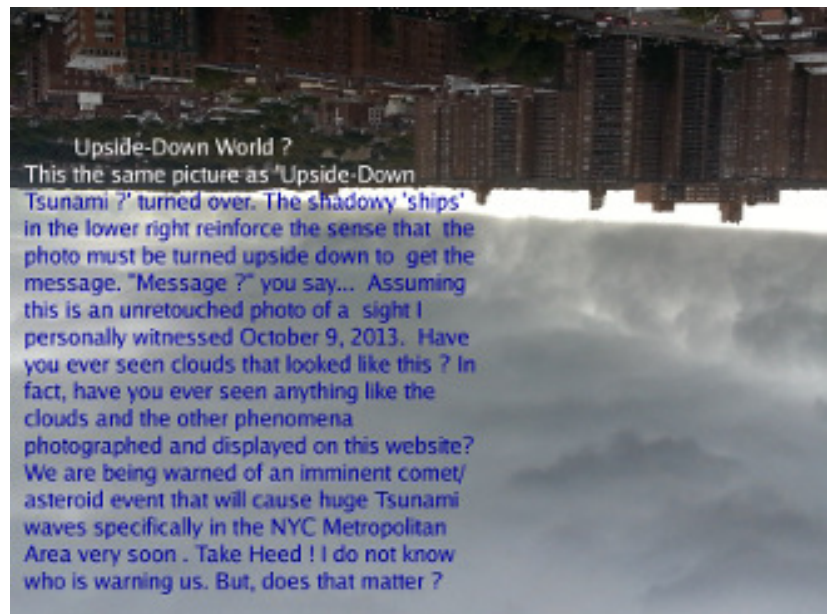
World governments have had no bigger secret than the return of the 'Destroyer' the last thirty or so years. When it appears, it will be too late. It will look at times as if there are two Suns. The enormous dust and debris cloud accompanying it may give it the appearance of a 'Winged Disk', a symbol common to a number of ancient cultures. This is the very apocalypse spoken of in the Bible's Book of Revelation. After a brief flurry of news in the 1980's, very little was heard on this topic. An immense cover-up of information has been underway and it has worked. It has included ruining the careers of scientists that spoke on the topic. A number of astronomers have even died under unusual circumstances. No one has spoken of this except in terms related to translation of ancient Sumerian clay tablets that tell the story in detail. No precise time line for an event has been given, nor is it considered fully accepted by the 'official' scientific community that Planet-X even exists.

I started photographing the clouds, Sun, Moon and reviewing NASA photos of Mars in late 2012. Here is some of the imagery in the Clouds that initially attracted my attention in 2013.

Numerous images that appeared to be Comets or things falling from the sky.

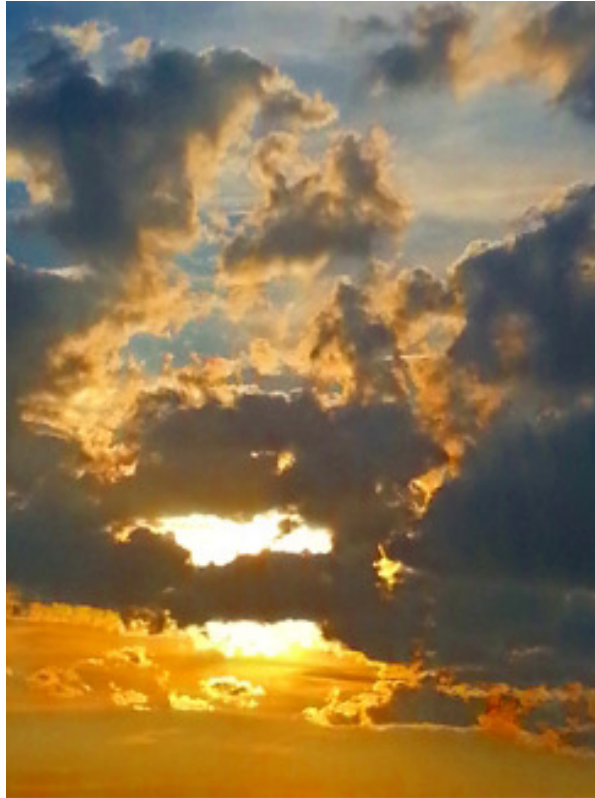


This scene turned upside down suggested a Tsunami to me.



The next photo has had some color enhancement in the yellow/orange area but no other changes. It looks to me like a warrior on a cloud wearing a helmet. His abdomen is pierced by a ray of light. This is specifically suggestive of a passage in the biblical book of Revelation.

“Preparing for Battle”



I have been interested in the matter of Planet-X and the ancient Sumerian culture for over twenty years and have thousands of photographs from the past few years showing the warning signs and finally the approach of the actual star and planets that are now looping around our Sun. This is very real and can be verified by simply taking a photograph of the Sun using a Solar Filter. I use a combination of equipment and techniques including research, solar filter, infrared camera, film camera and digital cameras. About three years ago, something in the skies caught my attention. I was certain there were sculptures being made out of the clouds. While humans have always seen forms and faces in the clouds, this seemed different. There were entire scenes. Most seemed warnings of impending disasters. The photos below were taken in April of 2013 in the middle of the night. For hours there were changing scenes occurring in a hole in the clouds in an otherwise overcast sky. A bright light I initially thought to be the Moon was the centerpiece in these fantastic displays.

“Division of the World”



“Riding the Dark Star to Earth”



“Noah’s Warning”



“The Conductor of Life”



Factors contributing to a belief that Planet-X is out there:

- a. The orbits of Uranus, Neptune and the trajectory of the two Voyager Spacecraft launched into deep space are all 'off' from what scientists had predicted. It was proposed that this could only be due to the gravitational effects of a large celestial body, a large Planet or Dwarf star somewhere in our Solar System, as yet, undiscovered. Scientists called this 'Planet-X.' For a long time, even the most modern science could not view the area around our Sun because the brightness of the Sun covered any observations. So the Hubble Space Telescope and other satellite based observatories were launched. For a number of years NASA has had numerous satellites covering this 'blind spot.'

- b. Many civilizations have suddenly appeared and vanished. Science has no idea why they vanished. If Humans were here millions of years and keep getting knocked back to the Stone Age, that would explain the cycles of civilizations.
 - a. Egyptians that built Pyramids
 - b. Mayan Culture in South America
 - c. Large Structures, found underwater around the world.
 - d. Generally, only large megalith stone structures have survived from the far past.
- c. Odd discoveries, such as Woolly Mammoths and other prehistoric animals with food in their mouths and stomachs. Five to ten thousand years ago, they died and were frozen so suddenly that their remains were still fresh enough to have been eaten by their discoverers.
- d. Ancient humans demonstrated an interest in tracking the stars as shown by megalith structures such as Stonehenge in England. It has been assumed that this was for mundane reasons such as knowing when to plant crops. Some of the knowledge required to build these megalith structures meant understanding the motions of the heavenly bodies on a timescale much longer than a human life. Great efforts were put into these observatories.
- e. Many cultures around world tell legends, similar stories, of Floods and great destruction.
- f. Plato, in his 'Dialogues' of Timaeus and Critias' spoke of the Earth having gone through cycles of destruction and recreation.
- g. The Ancient Egyptians, Mayans, Northern Europe cultures, Hindu's, Ancient India tell legends that the sky appeared different in the past - than it does today. They also speak of cycles of destruction and Re-creation. The Hopi Indians believe they emerged from a hole in the Earth to our world, the 4th World, after the last cycle.
- h. The Hopi Indians, Mayan Indians, Hindu and Christian religions all say something huge is about to happen.
- i. Great underground ancient tunnel systems across Europe, Turkey and other parts of the world have been discovered. Some could hold tens of thousands of people.
- j. The Christian Bible seems to predict a coming catastrophe in the Book of Revelation.
- k. Charles Darwin theory of evolution has no direct evidence showing a transition- from apes to Man. Rather, the archaeological record shows sudden jumps and sudden appearances of modern man. The ancient Sumerians say that man was created by aliens; the Annunaki from one of the planets of the Nibiru system.

- l. Symbols etched into rocks by very ancient man from Australia to the American Southwest show similar motifs or art. It could be that these people were recording something they saw in the skies. Symbols that permeate man's records; crosses, spiral's, even the swastika may have its basis in celestial threats.
- m. In the 19th Century a US Congressman, Ignatius Donnelly, who was a writer and amateur scientist, wrote "Ragnarok: The Age of Fire and Gravel" in which he proposed the Great Flood and sinking of Atlantis were due to a Cometary impact.
- n. In the 19th century, tens of thousands of clay tablets with writing on them were found in Mesopotamia. Once called Sumer, this is now the country called Iraq. This is the general area known as the 'Cradle of Civilization.'

Photographs with images of things that were not seen by the naked eye. Example: "The Ancient Ones Retake Babylon", NYC Skyline Sept. 27, 2013

This has happened a number of times. The subject matter ranges from the tiny to huge things that when I see them I say to myself "How could I have not seen that?"

On the next page is a night photo of the New York City skyline from the evening of September 27, 2013. I thought I had taken a series of photos of the NYC skyline on the East side of Manhattan from about 30th street up to almost 65th street. Later, when I looked at the images, there appeared to be figures, suggesting Ancient Mesopotamian gods, in front of the building making up the NYC Skyline. There is a female, perhaps Ishtar, sitting, legs crossed, in front of the Empire State Building. She is holding a globular light in her left hand. Interestingly, the aircraft light is missing from the top of the building's antenna. I have all the original photographs. Some of the other images from that day and evening also have cloud formations and aircraft above the skyline.

Top Image: Turned 90 degrees counter clockwise; do you see any figures wearing a hat in the clouds?

Bottom Image: Starting at the southern end or left side of the image

30th Street – Figure Getting in/out of a large throne chair and/or hugged by a smaller female on our right.

34th Street – Breasted Female wearing a helmet sitting in front of the Empire State Building, her right leg over her left, holding a globe of light in her left hand.

36th Street – Female with long hair sitting facing North with her right side facing us.

37th Street – A lantern or upstretched arm holding a platter upon which are three or four globes of light. This is almost over the head of the 36th street female. There is a smaller figure directly under the 'platter' holding the lights.

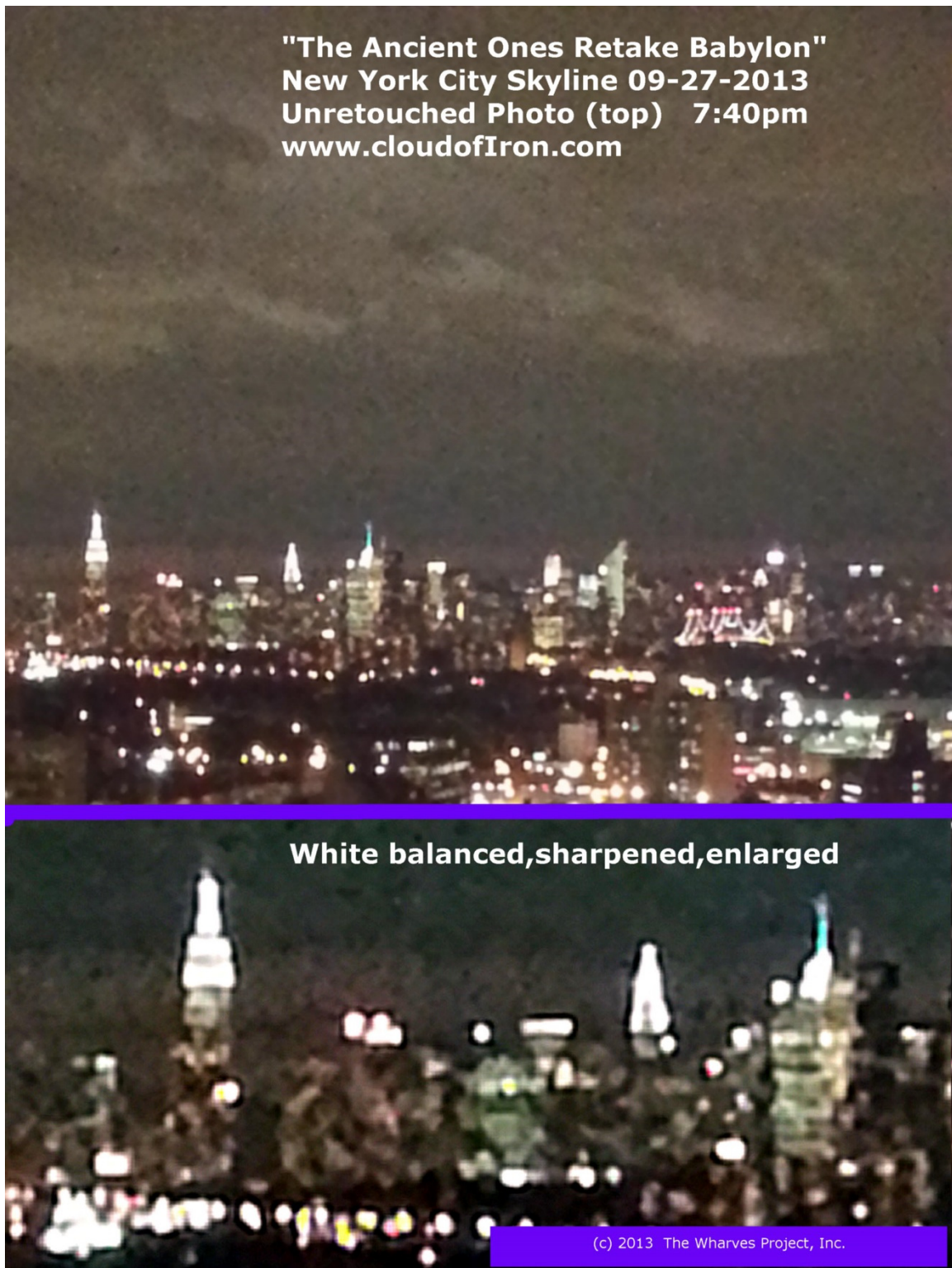
38th Street – A snake like entity coming from the West side of Manhattan, curving up and over buildings and then down again, with its head turned towards the 37th Street lights. Perhaps about to engage the man standing directly under the lights on a platter.

39th Street – A green colored monstrosity with two white eyes or observing the viewer with binoculars or glasses. It has a horizontal mouth above a large chin.

40th Street- As we approach the Chrysler Building at 42nd Street and continue North, a few vague forms; perhaps a large head facing north, to its right a beaked bird facing south.

"The Ancient Ones Retake Babylon", NYC Skyline Sept. 27, 2013

On the next page, the top image is the original image, the only change being text added to it. The bottom image is an enlarged enhanced crop of the NYC skyline from about 30th Street to about 42nd Street. This is looking west from about eight miles away in central Queens. Image processing on the enlargement includes: White Balancing and Sharpening.



The Sumerian clay tablets were not translated until early in 20th century. Many were business records, many were taken to be mythology, stories or legends. Many of these stories matched bible stories with slight variations in names.

A Russian scientist, Immanuel Velikovsky in the 1950's wrote a book **"Worlds in Collision"** that claiming that the Earth and our Solar System had gone through periods of planetary collisions. According to Velikovsky, the evidence was there in the geology of the Earth and the current orbits of the planets. His controversial Ideas were ridiculed by some scientists. Others began to reexamine their sciences. Until this point, 'Modern Science' had had the opinion that changes to the Earth, such as the building of Mountains etc were the result of very gradual processes operating over millions of years. Now, some scientists began to consider a new theory called 'Catastrophism.' This theory suggested that things like Comet and Asteroid impacts were the more important events that caused the Earth to look and act the way it does.

Sumerian Clay Tablet with Cuneiform Writing on it. & Sumerian Cylinder Seals:



Zecharia Sitchin and the Sumerian Tablets and Seals:

Another Russian scientist, Zecharia Sitchin spent many years reviewing the Sumerian tablets. He asked, 'What if these were not legends, but real history?' Seen from that perspective, the tablets tell a sobering tale that is very specific about celestial events. The ancient Sumerians had an uncanny knowledge of the Solar System. They recorded details that modern science did not re-discover until the 20th Century. The ancient Sumerians were quite advanced, they developed the first code of laws,

and made precise astronomical observations, kept business records, and are generally credited with being the founders of modern day civilization. Many of the tablets and seals show well defined astronomical subjects. According to these 6,000 year old tablets here is a summary of one the stories they tell.

Sumerian Cylinder Seal



Our Sun has a companion 'Binary Star.' (We were looking for 'Planet-X', looks like there's more to it!)

This companion star is a brown dwarf star with a number of planets orbiting it just as the Earth orbits the Sun.

The star is very dim and small as stars go, it is about 1/3 the size of our Sun. We'll call it the 'Dark Star.'

The Dark Star and its planets are on a orbit around our Sun that takes 3,600 years to complete.

For half that time it is moving away from us, the other half of the time is it's return trip to our Sun and planets.

The Dark Star, also known now as 'Nemesis' wreaks major destruction on the Earth on most if not every passage.

It was known as the 'Destroyer' in ancient Egypt, Lord Shiva in ancient India, and Wormwood in the Biblical Book of Revelation

Some of my information, for example about 'aliens' is from sources on the Internet and rightly questioned. What is less questionable, and a solid fact to me, are my photographs over the past few years of something emerging from the 'blind spot' near our Sun.

One of the system's planets is huge, supposedly some four times larger than the Earth and uninhabitable. Surrounded by a huge debris cloud it is called 'Nibiru.'

Another of the planets, is inhabited by a civilization more advanced than ours, according to the Sumerian's recorded version of history, these

extraterrestrials, the Annunaki, were instrumental in our very existence, creating the first humans. I don't want to side track my argument that imminent disaster approaches but the ancient references to the Annunaki include astronomical information and background details.

You could think of the known planets orbiting our Sun all aligned, as if on the surface of a table with the Sun at the center of the table.

The orbit of the 'Dark Star' is not lined up with the other planets. It is coming up at the Sun from the floor behind the Sun.

For this reason, the Dark Star is not visible until it emerges from behind the Sun to loop around and begin its return trip out of our Solar System

It does not even have to strike us to create us great grief. The gravity of a star is huge. Just being in our Solar System is enough to cause major problems like:

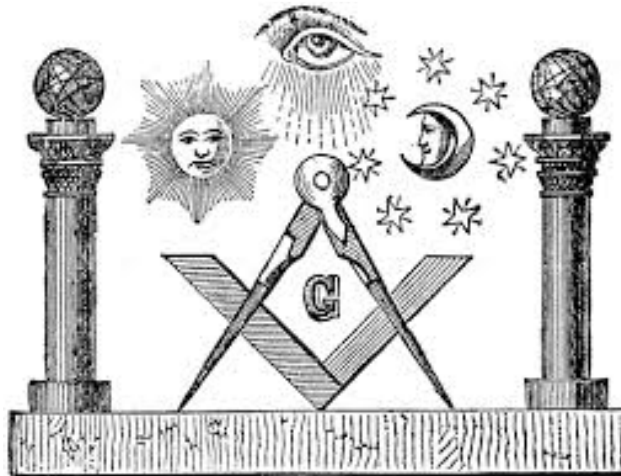
1. Disrupting the Earth's and Moon's Orbit.
2. Earthquakes
3. Volcanic Eruptions
4. Weather changes
5. Tsunami (Tidal Waves)
6. Asteroid impacts (there is an enormous dust and rock cloud as part of this system)
7. Pole Shift (where the North Pole and South Poles reverse)



A little about my interest in this topic and my lay person qualifications:

I have been interested in the topic of Planet-X for many years and coincidentally reading about the ancient Sumerians for almost the same length of time. I wrote a college research paper on NASA's search for Near Earth Objects in 2004 and got even deeper into the subject. I learned how to fly a plane and in the course of that learned much about meteorology and other aviation related topics. (I soloed 12 times, and then stopped before getting my pilot's License so I could focus on my computer business.) I previously had done freelance news photography and had a few small exhibitions and am very comfortable with a camera. I have always had great interest in history and science. Wondering many of the questions we all have; about where humankind is from and whence we are headed.

The Freemasons

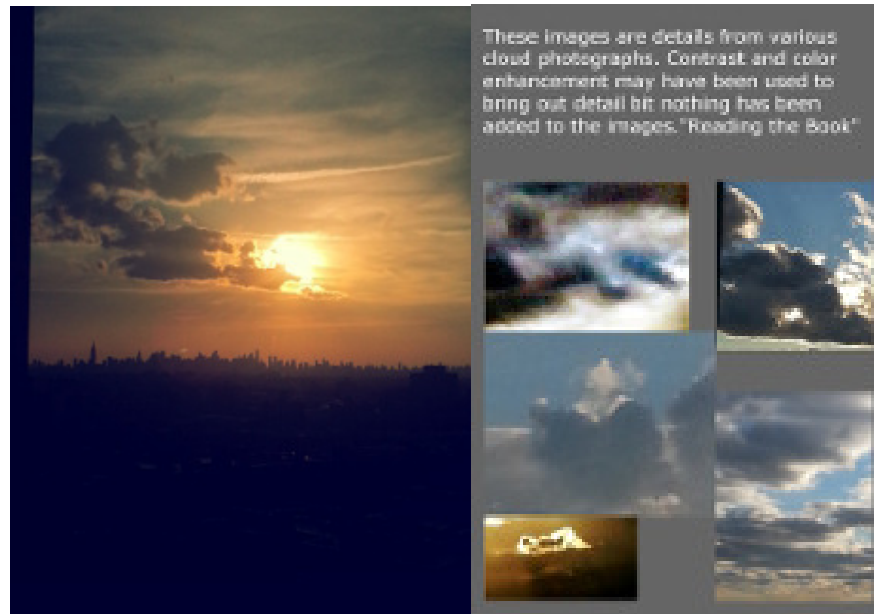


I've been a Freemason since 2001 and was head of my Lodge for two terms. It was fascinating learning the little that is known about the fraternity's roots. Its most prominently displayed symbols, the Square, Compass and Plumb line are the basic tools needed to construct a building. Masonry's goal is that of 'Making Good Men Better Men', but I have always had a sense there was an even greater purpose. Without giving away any real secrets, the Masons speak of protecting knowledge for Humanity in two separate containers. One protects against Fire, the other Flood. Why would that be? Why are our basic symbols building tools? They are used allegorically to teach lessons about character building to the Mason but there is also an implication that when civilization falls, there is a need for knowledge to rebuild it. Officially, Masonry's biggest secret is lost. It is my belief that the lost secret is that there is a cyclical destruction that occurs on the Earth and the Masons need to be a part of the reconstruction.

Since 2013 I have been making observations of the sky, Sun and Moon. These were prompted by seeing some incredible things in the sky that looked like intentional cloud formations and designs. Things that looked like huge tsunami waves, comets, people swimming and many other themes that seemed to be warnings. I have thousands of photos.

“Reading by the Light of the Suns”

“The Good Book”



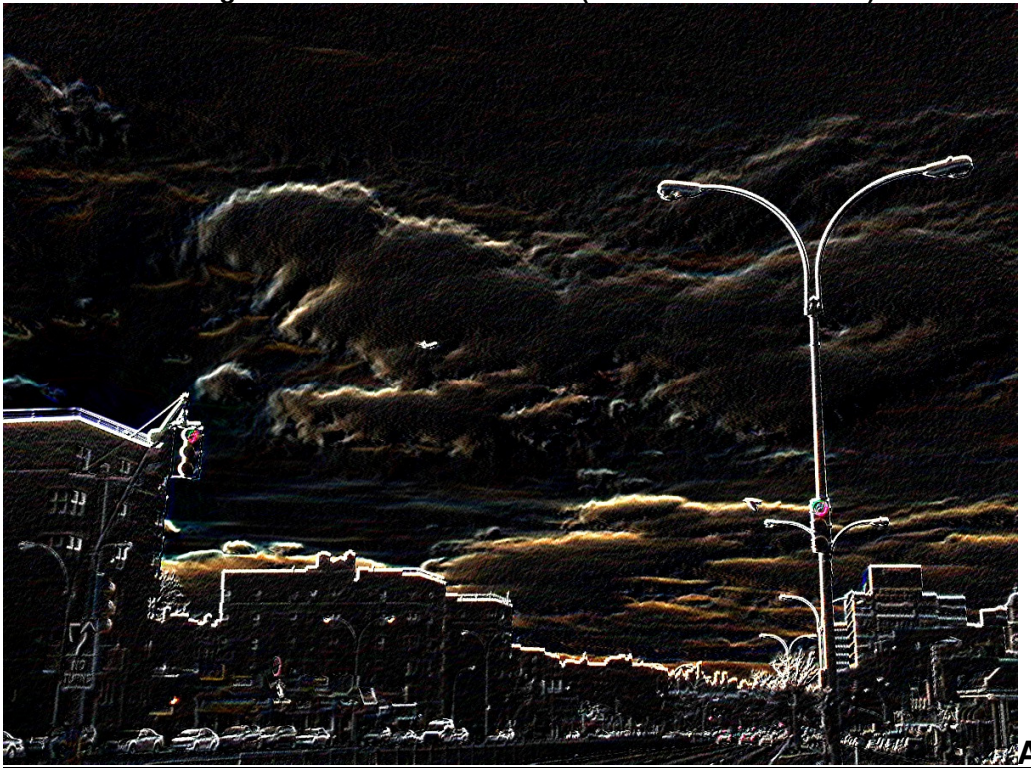
During a summer thunderstorm in 2014, a number of clouds shaped like fighters lined up, and made a 90 degree turn north-east, swooping down as if to show me they were there. My building is under one of the approaches to La Guardia Airport (LGA)



**Unusual Results from Using ‘Neon Edge Detection’ Processing ‘The
“Wolf Cloud Marauding Queens, 2013”, Original Photo**



After Neon Edge Detection Filter GIMP 2.8 (Filter Parameters: 9/3)



I sometimes apply an image processing filter called 'Edge Processing' on my pictures of clouds; It is supposed to highlight details that I might not otherwise notice with bright neon colors. If I see something odd, I can then investigate it further. Shortly after I started using it, I saw that often the processed clouds came out markedly different than they had looked to the naked eye. Not every photos; just some. In almost every case where this phenomenon occurred the edge detection filter created an entire frightening apocalyptic scene out of the clouds. You could look at the original photo and see where the edge detection filter based its edge detection on, but there was an inexplicable additional level of detail. For example you can see, ok, that cloud became a tsunami wave and the little cloud a boat. But where did these figures (people) in the boat come from. And they are holding oars... And where did the dinosaur or dragon on the cloud come from? It has teeth and people are trying to get away from it. And on that other cloud there is something holding an open book.

For a couple of years I wondered if perhaps the programmers of the photo editing/analysis software I use had a sense of humor and had added in this 'feature' that took some simple data in the picture and used it to create these scenes.

The other theory was too wacky to even consider. That the edge detection routine was actually finding hints of detail that were being duly recorded by the camera (actually 4 different cameras) - another layer of reality, another dimension?

Wacky Theory and/or Plot for Upcoming Sci Fi Movie?

Now showing up in my images were the outlines of the work of usually invisible life form's energy fields. These were made visible to the camera by nano-sized metallic particles that were being 'Chem-Trailed' into our upper atmosphere. Surely you have heard of, perhaps even seen the infamous large flying craft of unknown origin, creating those contrail like long thin lines high in the sky.

Those "Chem Trails" are rumored to be full of tiny metallic particles that are blamed by some for an attempt to wipe out humanity, for Weather Modification, Secret Electronic USAF HAARP weather warfare manipulations, providing the base material to create cloud sculptures from and my personal favorite; to simply obscure the sky and the approach of the Nibiru system. The materials first appear to be Jet engine contrails and the craft, to the naked eye, appear to be large unmarked 707 size jets. Unlike contrails whose lifespan is measured in minutes, "Chem-Trails"

take days to drift down. Ever expanding until the area is filled with a milky white haze through which no stars are visible. I have a few infrared telephoto images made myself that show clearly; *those are not planes laying down the long contrail like clouds. I don't know what they are and if you know, please let me in on it.*

Imagine that!, Aliens that were invisible to us - an entire alien reality coexisting with us in real time. Until now, each civilization, silent and unseen to the other. Each, only needing those resources on Earth which they were able to perceive. A perfect co-existence.

That is, until I came along clicking away on my cameras, my recorded observations have, like the physics experiment prematurely observed by the impatient scientist, have caused the impossible to become possible. Invisible realities that coexisted for eons with other realities are now aware of each other.

The tenuous thread of a connection between the two universes previously strangers to one another, it has been enlarged. Things have gone too far. Too much has been observed. Too much carefully documented. The portal in the Time/Space continuum is now stuck in the 'Open' position.

What am I really seeing as a result of photo analysis with these Neon Edge Processing Filters?

Last week I tracked down one of those geniuses involved with the relevant graphic processing software's development and he assured me that it was a strictly mathematical, somewhat simple (if you know the math) piece of code. He showed me where I could get more information to understand it better. I am no mathematician but was able to see that the items I am seeing in the end result photos must be in the original scene to some extent. There are other equally scary sinister possibilities:

1. Some agency or organization has updated the software on my computer to create these Images. I have the software acting the same on a two PC's, Mac and an Android. Have they reached *all* my resources ?
2. The person I communicated with about the program was lying or is unaware that four years ago, a junior programmer inserted some 'Easter Egg' type code into the project the morning of the day he left the project. (the person I dealt with seemed sincere and was very helpful.)
3. Due to some confusion in the *spirit world*, I was given some supernatural powers at birth that were intended for a neighbor's

child, so she could save the World when needed later in her life. I have unknowingly been creating the pictures in the camera as a reflection of my own 'Dark Side.' As an unfortunate side effect, in the year 2029 when her help is desperately needed, the now adult woman 'neighbor's child' will be unable to muster anything more powerful than the Tooth Fairy and all humanity is doomed.

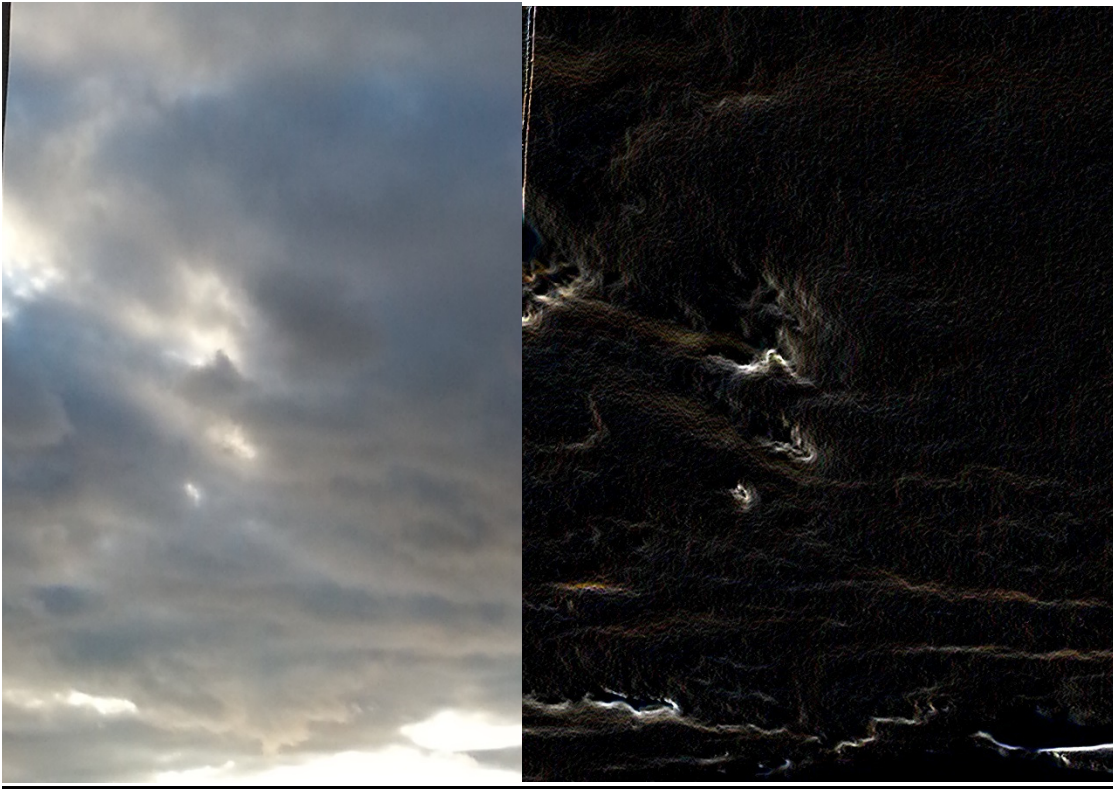
So, I am left pondering what could be causing the images I am getting after running the Neon Edge Detection Filter. Could they represent an alien civilization, perhaps from one of the Nibiru System's planets, attempting to warn us of tribulations to come? If so, they are only part of the picture, one of a myriad of warnings and signs that there is 'more to come,'

Here is a link to some originals and their edge detected end results:

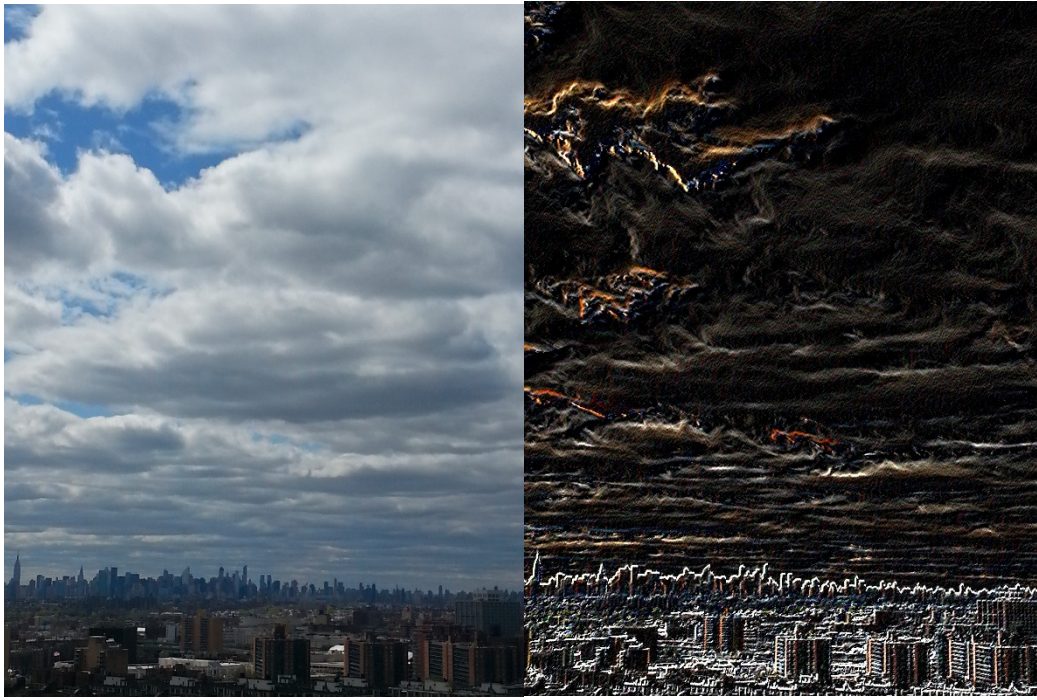
"Reading the Book to a Captive Audience, 2014 (20140603 174557)"



Arrival of the Crocadilian (20140427 190447 Apr 27, 2014 7:04pm



“Babylon has another visitor” (10240427 151329 5)

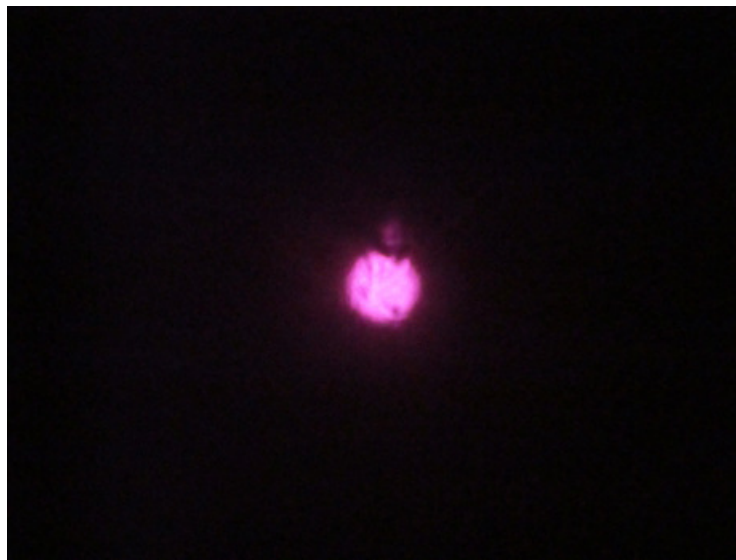


Why I am more certain than ever that the ancient histories of the Sumerians and others may be true ?

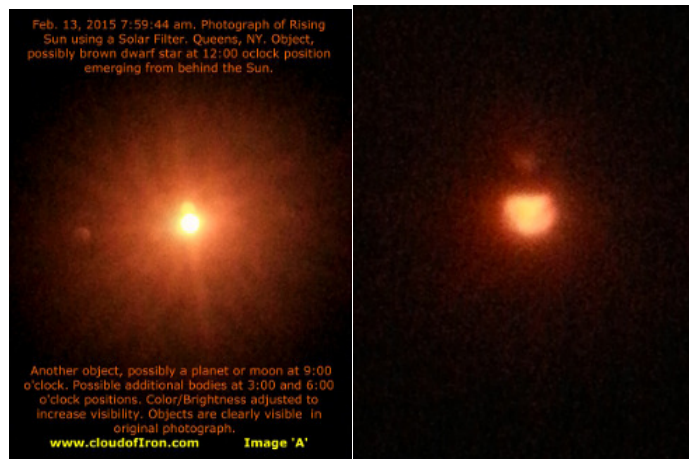
I had always been taking photos of the Sun and Moon but in 2014 decided to use a Solar Filter and look for changes in our satellite and star. I found them. I use the 'Burst' mode on my phone camera so it would take 20 photos in a couple of seconds. The photos do show additional objects near the Sun.. The photos show that at least some of the round or spherical objects are in motion. They clearly are planets or stars. There was also a brownish red smoke like haze that was all around. Ironically, my website is named 'Cloud of Iron' and that is exactly what it looks like. (see <http://www.cloudofiron.com>)

Following are some of the photos taken facing South around 5:00pm with a Solar Filter.

January 7, 2015 I believe this Infrared image to show the dwarf "Dark Star" emerging from behind our Sun.



This February 13, 2015 photo shows the dwarf star still emerging from behind our sun and shows a large object at the 9:00 o'clock position. There are hints of additional celestial bodies at 3:00 and 6:00 o'clock. The one at 6:00 o'clock might be very large.



The planet Nibiru is said to be four times the size of the Earth.

Here are some more recent Photos; all from January and early February 2015.

Jan 9, 2015

Jan 17, 2015

Blue Filter Used Below



In any given three second period where I am holding down the shutter and taking about 20 photos the shape of the Sun changes greatly. It is as if something is orbiting it very fast and the object's strong gravity is creating a dark mark on the sun, bisecting it like you would cut an orange. Within fractions of a second the damage seems repaired and the Sun assumes another shape for fractions of seconds. I can only speculate, but what if one of the visiting objects were a 'black hole'?

Feb 3, 2015



Feb 16, 2015



We Humans may or may not be in control of our own destiny. But we do need an awakening. Our most basic needs have been met simply enough by; food, shelter, family and society and legends of unknown provenance. Once these needs are met, 99.99% of us look no further. We live our lives as we have for untold thousands of years, quietly watching the hypnotic fire in the cave or hearth and listening to stories that we unquestioningly accept as our real history. Those in the tiny percent that try to seek more profound answers, whether in the sciences, spiritually or researching our history and human development have to really fight to get any information out that doesn't fit paradigms current at the time. They are libeled, ridiculed and the many of them sputter out like a candle briefly lit in a storm.

Perhaps the invention of the 3-D printer recently will help jump start civilization in the coming new age. Tribes of scribes and 'makers' and 'tinkerers' will start centers of industry. You probably need 20 or 30 machines (spare parts) and a good supply of ABS plastic, a few electric generators that run on anything that burns. Did anyone think to code the programs to produce some basic items? What would be needed? Our modern shiny civilization, if you reduce it to its barest requirements, what would we need. I mean *really* need?

Hoes, Plows, forms for mud bricks, the arts of ore extraction and smelting, the designs of milling and metal cutting machines? Ah here's an important one. Replace all coffee machines with Melitta type paper filter coffee makers. Oh, we won't have coffee.... Let me think this out a bit.

During the last few weeks prior to impact, the government may try to retain some control over people that have no control by relocating them to 'FEMA Family Centers and Camps.' It is from here that will come, the FEMA Survivors that will be the source of labor desperately needed to build the Fifth World. Will the survivor children born in the FEMA Camps work alongside or under the emerging tunnel/bunker population.

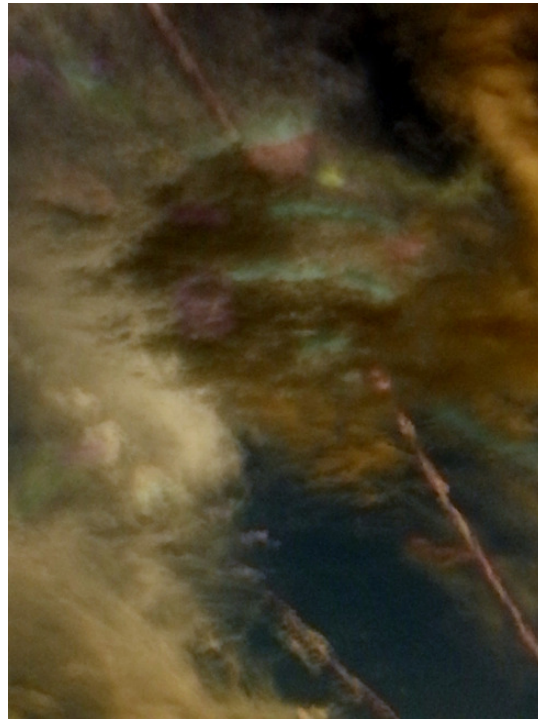
Will they in turn find that the surface has been claimed here and there by groups and tribes of Survivalists and that every inch of land must be fought for ? Or, perhaps an alien race has been coveting our planet and waiting for the coming of Nibiru to make their move. Perhaps all human groups will emerge into a world where they are all slaves of a civilization that pays as much attention to their needs as humans did to smart domesticated animals. It may be true that a New World Order had been in the planning since the early 20th Century - but no one thought it would be like this.

Great efforts have been made to keep the impending arrival of our Sun's unwelcome relative a secret. To keep it a secret until it's too late for anyone to do anything to save themselves has been a herculean task. The technologies required are mind boggling and call into question whether it's within human ability to perform some of the sleight of hand necessary to keep the entire population of a planet in the dark. Is an alien civilization and their agenda, guiding our and assisting our government in managing this event?

Many of the warnings have been done by sculpting the clouds. I don't know if humans can do this on their own or had help but I saw my first 'UFO' in 2013 and have seen many since. One theory is that the persistent contrail like spraying in the upper atmosphere of nano-particle sized metals like Barium and Aluminum provides 'fake' cloud material with which drones that are using advanced cloaking and propulsion systems can sculpt the clouds. From the ground, it appears that these 'Chem-Trails' are being sprayed very high up by large familiar human aircraft.

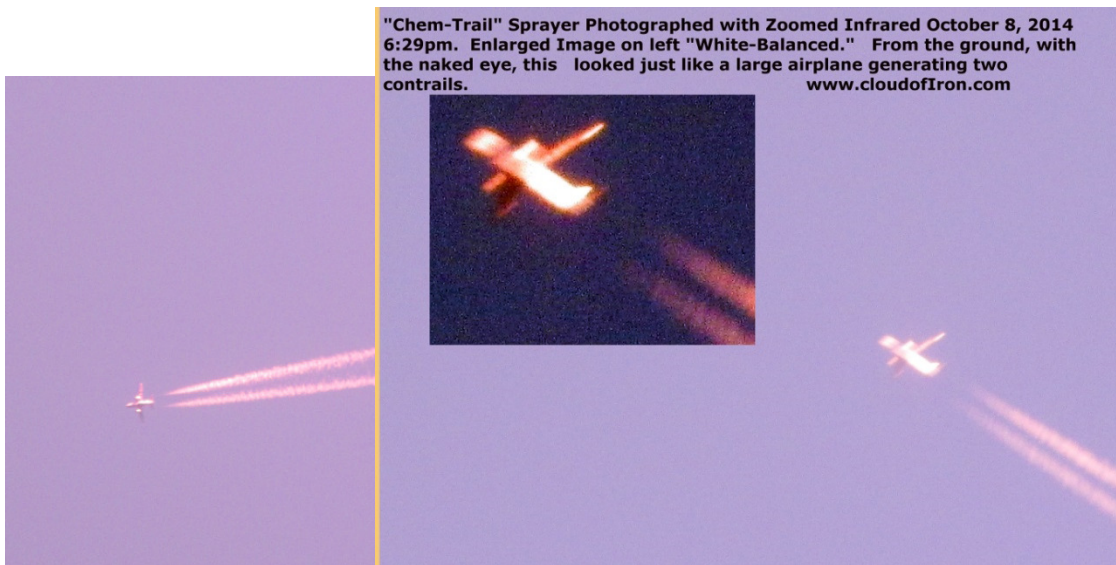
May 1, 2014

Chem-Trails turned into Sculpture



But my binoculars and telescopic lens tell a different story. These are not familiar aircraft at all. They are some other kind of flying craft, likely alien in nature. Look at these infrared zoom photographs I took in October of 2014 of a high flying sprayer. To the naked eye on the ground they do look like large winged aircraft. But enlarging the image reveals a parody of an airplane. A flying thing with the general outline of a plane but it's just not right. The photo on the right is really nothing at all like a plane when you look closely at it.

October 8, 2014 "Chem-Trail Sprayers"



The creation of a haze to obscure celestial observations is one reason for the Chem-Trail spraying. Possibly it is also helping retain the atmosphere as our planet careens around the Solar System under the gravitational effect of the Dark Star. Another reason is to provide raw electronically conductive materials onto which 3-D holographic images can be projected and plasma fields can be energized through to hold the shape of cloud designs.

"Angelic Mother and Child" Sept 7, 2014



"An Angel leaving her troubles behind her."



Cloud Making and Holographic Projection March 22, 2013

On the next page is a photograph taken March 22, 2013. It has a number of interesting features:

1. Upper left. UFO (Dark box shape) generating cloud material.
2. Center, something, assumed to be another UFO, hidden in the clouds billowing out cloud material at a very high volume.
3. At the 3:00 o'clock position, a color, 3-D hologram of someone sitting on the cloud reading a book. This was not seen by the naked eye.

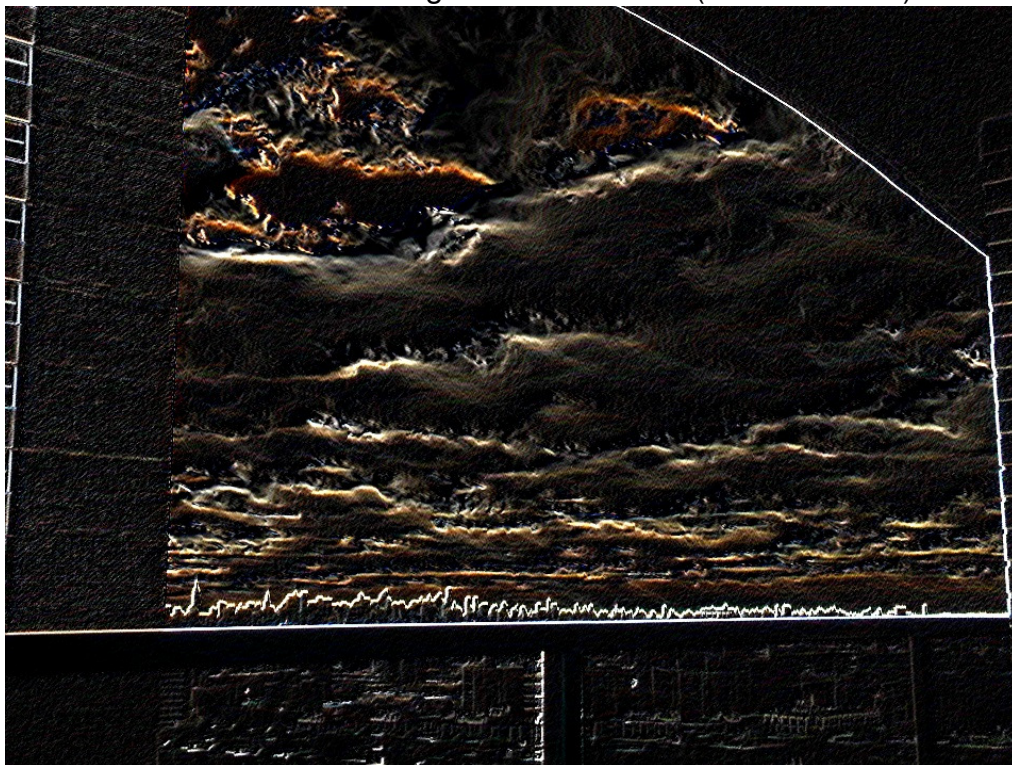
A UFO is an Unidentified Flying Object. No one said they are aliens. It could represent a secret human technology.

The second image is the exact same photo after processing with an 'Edge Detection Filter.'

CloudMaking1__20130322_171851.JPG
Unprocessed Version:



CloudMaking1__20130322_171851.JPG
Processed with Edge Detection Filter (GIMP 2.8 9/.3)



Magician's Moon

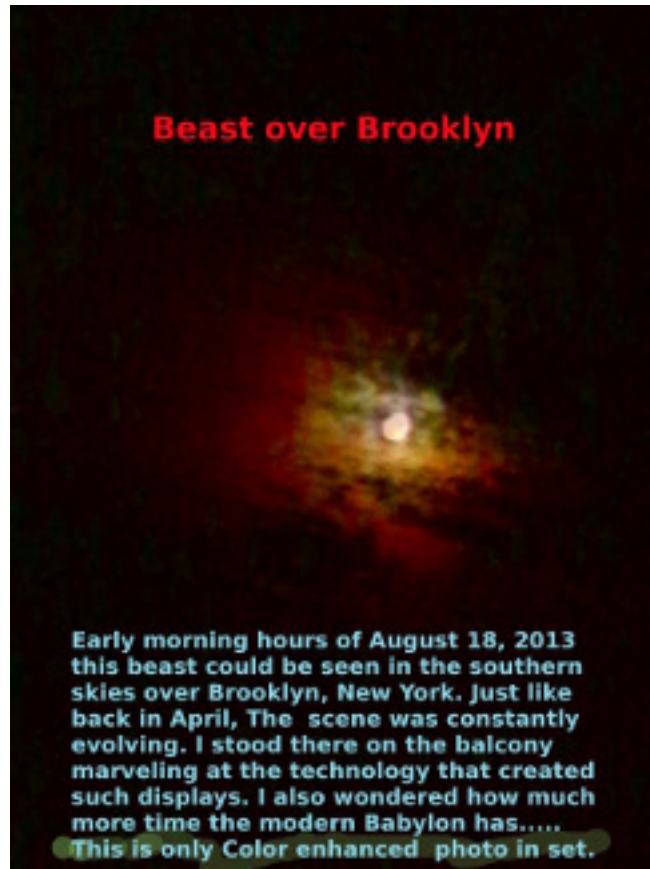
I have twice seen imagery suggesting a Magician manipulating celestial bodies. In reviewing NASA Mars photos returned from the Curiosity Rover mission, I inverted the color of the site of the first drilling into Mars and the picture surprised me. It was a Magician wearing a dark cloak and a red 'Top hat' holding what I thought was a crystal ball with what appeared to be a human form inside being pelted with rocks. I took this to be related to a future Comet or Asteroid strike. I now see that the bright yellow circle (the drilling hole) could maybe represent the Magician making the Sun disappear.

The second Magician was also an inverted photograph of the Sun, there were some clouds around it. When I looked at the photo, I was surprised as I often am. It was an image of a Magician wearing a black top hat waving his hands over the Sun or Moon; as if saying "1,2,3 Gone!"

One of the effects a visiting star would have on us is to disrupt our orbit. Previous histories of the approach of the Dark Star specifically mention things like the Sun rising in the West and setting in the East a couple of times.

As mentioned earlier, In April 2013 I watched a show in the nighttime sky where a very bright light played a central role. That light evidently was either supposed to represent the Moon symbolically or was used to make the Moon 'do tricks' while the real Moon was presumably behind heavy cloud cover over New York City. At the start, I thought that the bright light was in fact the Moon.

After watching a while I thought I had it figured out and that the real Moon was behind the clouds and this was an incredibly bright lamp of some kind. In August of 2013, a similar show was presented by agents unknown that featured the 'Beast of Brooklyn' as I called the snake/dragon like head in the sky with open mouth that used the 'Moon' as eyes.



Meanwhile, in general, I started looking at the Moon a bit differently. Sometimes it appeared as a slightly wobbling image with edges less defined than normal and details were not clear. Sometimes there was a 'wave' of color across it, similar to the view on a hot summers day as the rising heat from the road makes the image a bit wobbly. I attributed this to aging eyesight.

On the evening of Jan 29, 2015 at about 1:30 am, I looked out and saw to my surprise two partial moons in the sky. One was very bright with no details. Immediately behind it and slightly above it was a second, the exact same shape but it was the Moon – craters and all. I snapped a few pictures, the images in the sky eventually aligned and the moon crossed the sky at what appeared to be it's normal speed ending with a beautiful huge orange Moon that came gently to rest in the West.

I thought about it a bit and decided that I had seen (and photographed) a holographic projection of the Moon. From my limited understanding of 3-D holographic projections, there are two projections that have to be aligned perfectly for the effect to work. One provides the image's brightness and the other the detail. I had seen a briefly misaligned projection. Now, why would

anyone want to project an image of the Moon? Don't we have one? Or perhaps, we don't anymore, or, it's in the wrong spot due to the Dark Star's gravity?

The two images below are unaltered from the night I took them a. Photographs were taken with both a regular camera and an infrared camera.

Double Moon over NYC 1/29/2015



Infrared Double Moon (same night)

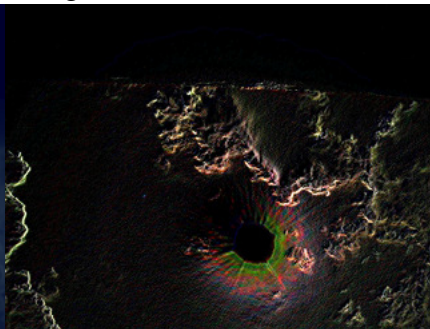
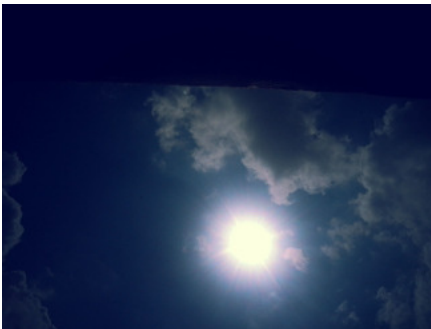


I decided to run Neon Edge Detection on the Photo of this double Moon and got the below result. Hmmm, that seemed familiar. I pulled out old photos of the Sun I had taken in 2013. I had done some edge processing of our star back then.

SUN

June 28, 2013

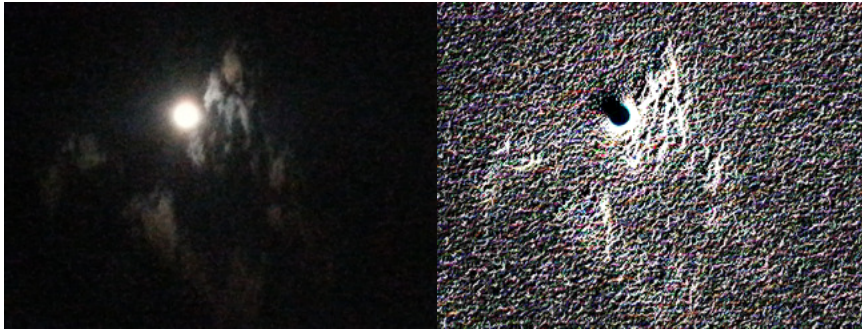
Edge Detected Neon



MOON

July 12, 2014

Edge Detected Neon



DOUBLE MOON

January 29, 2015

Edge Detected Neon



There are some similarities between the Edge Detection processed images of the Sun and the Moon. The biggest similarity is that for both the Moon and Sun, the edge detected version has a break in the circular shape from about 9 o'clock to 12 o'clock. Are both heavenly bodies projections and we are seeing an artifact of the equipment producing the effect? My experience of the double image Moon indicates to me that in spite of my disbelief and common sense notions that the Moon can't be projected; that our Moon was a projection that night and it does whatever it feels like! Who is doing this and why? Can we pick what we want projected? OK, my turn.... I think I want Nibiru and its entourage to be a projection. **Please** and **thank you!** Is this projection stuff even possible using current Human technologies? Why would it be done? I can think of only one reason. The Earth is off its normal orbit and someone doesn't want this to become common knowledge. Why would that be? Has the Nibiru system already pulled the Earth out of orbit and between now and when the real action starts, the less people that know – the better?



I reasoned that for a cover-up that extensive that Google Sky and other telescope apps would have to have their programs or at least data be altered so as to not give away the secret. That's possible. I have an early model GPS star finder. After initial setup fifteen or so years ago, I never updated it on the computer. Maybe if I tell it to point to a few planets and stars I will be able to compare that result with the result from Google Sky and find out if I'm right. A preliminary test where I asked both devices to point to Jupiter resulted in a difference of almost 90 degrees in where they said the giant planet will be. I need to test more with a few different stars and planets.

'A'

B'

'C'



'A' is an inverted photo of the Sun July 18, 2013 showing a Magician with a top hat making the Sun vanish in an act of 'prestidigitation.' 'B', is NASA's #0182MH0150002011E1_DXXX by the Curiosity Rover on Feb 19, 2013 of the Rover's drill hole in the Martian Surface. 'C' is photo 'B' after I applied 'value Inversion' to it. 'C' seems to show a Magician with an orange top hat on, wearing a cloak, holding the Sun as if a crystal ball. (To be Con't)