

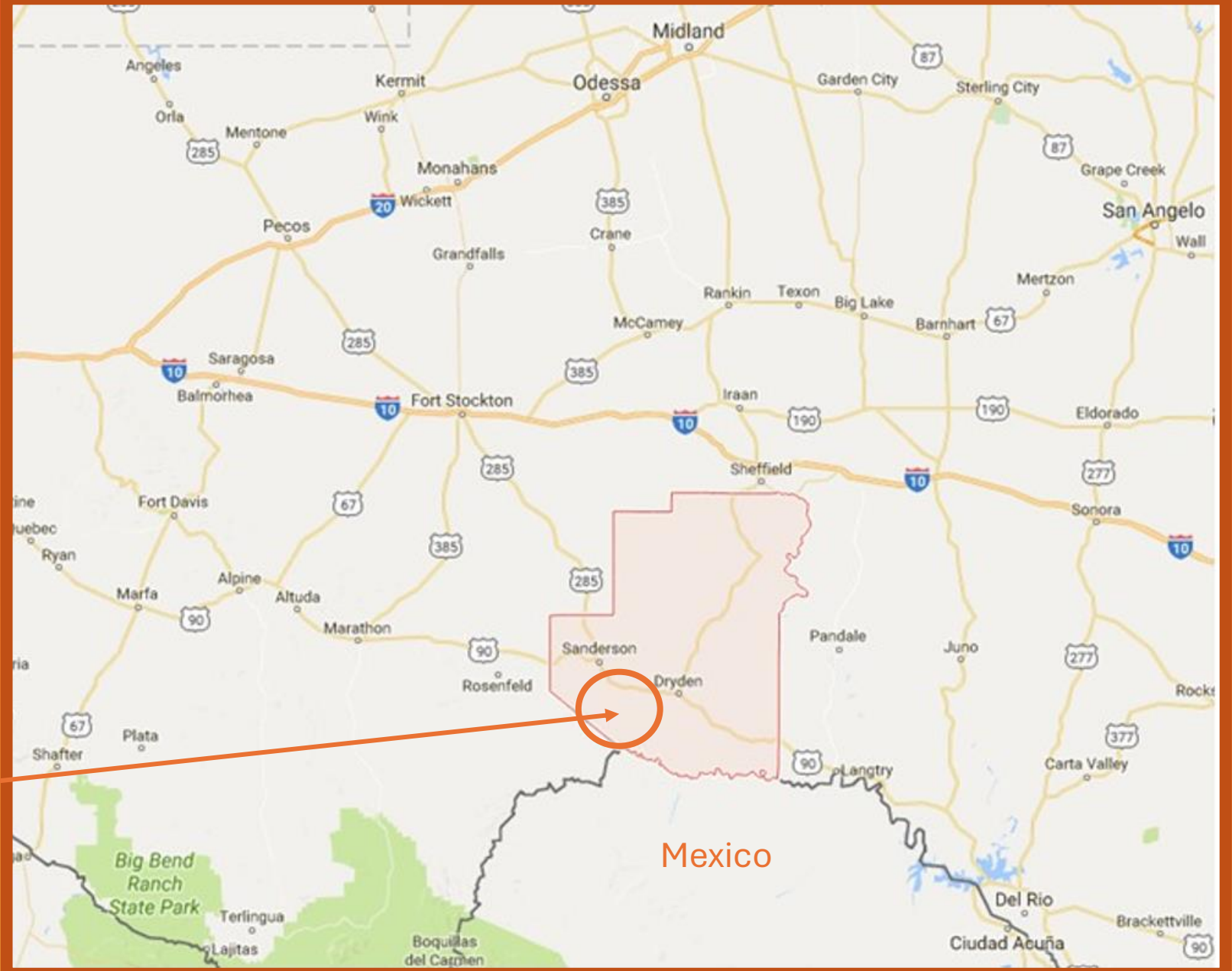
The background is a solid orange color. On the left side, there is a black silhouette of an oil drilling rig. In the center-right, there is a black silhouette of two horses running towards the right. The text is centered in the upper half of the image.

Red Horses West Project

Terrell Co., Texas

Austin Oil & Gas
(512) 567-1500
austinoilandgas.com

General Location
Red Horses West Project
Terrell Co., TX

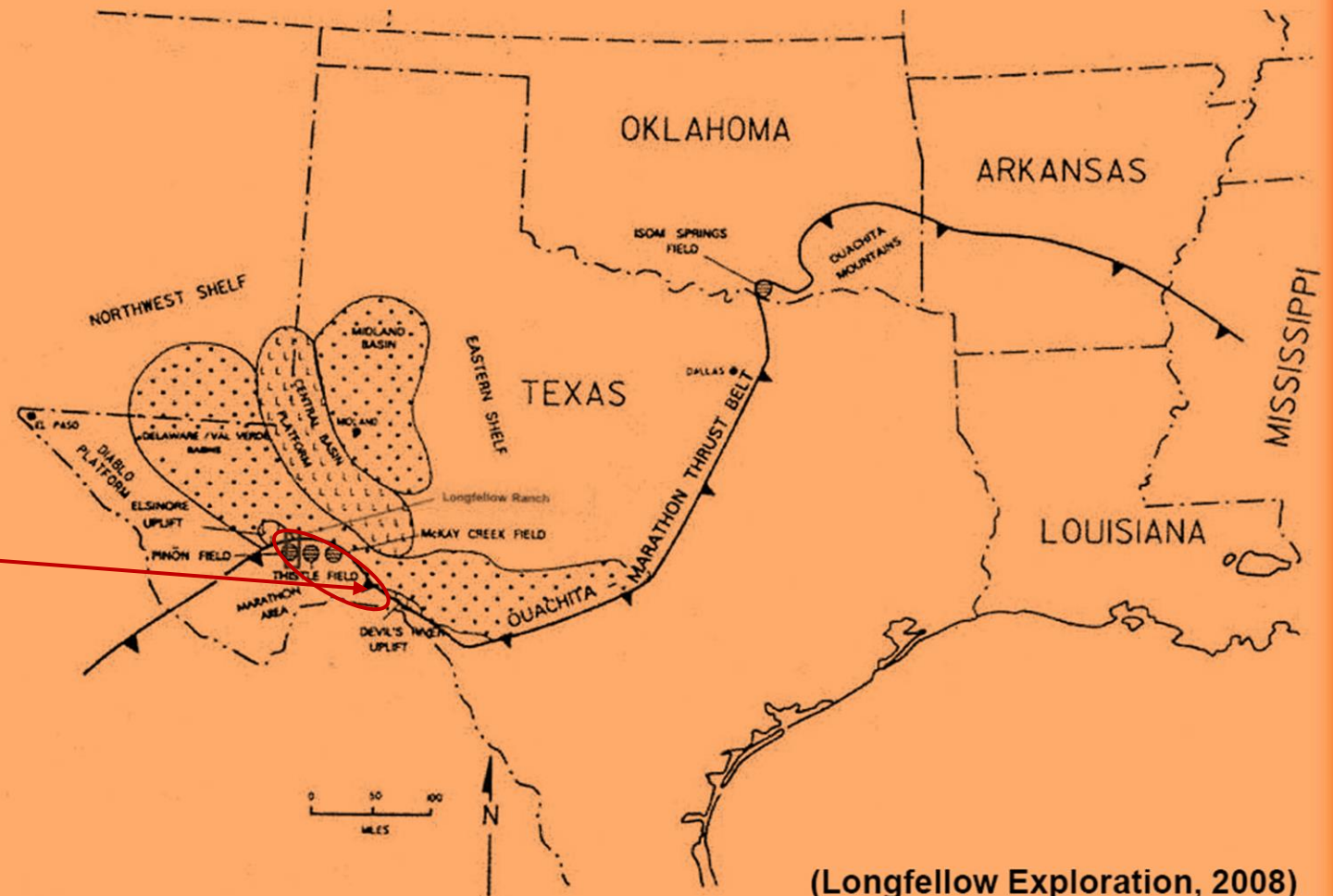


Marathon Thrust Belt

Caballos/Novaculite Fields
Pinion, Thistle, McKay Creek Fields

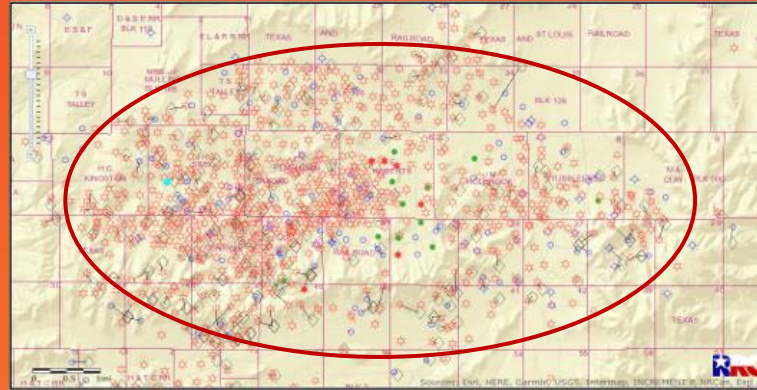
Red Horses West Project

On Trend with Thrust Belt

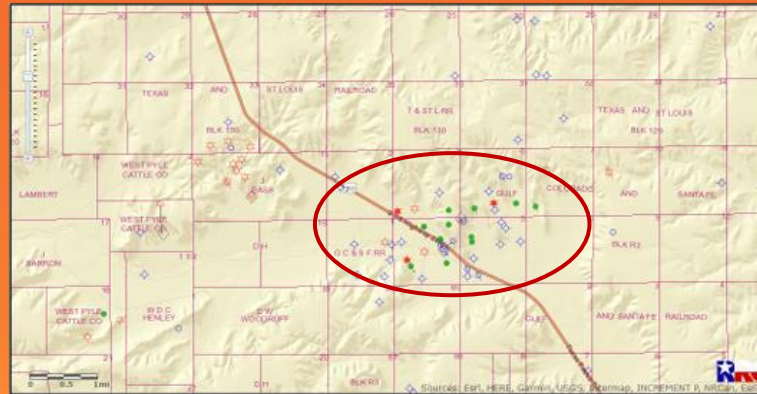


Caballos and Novaculite
Highly Fractured
Limestone and Chert

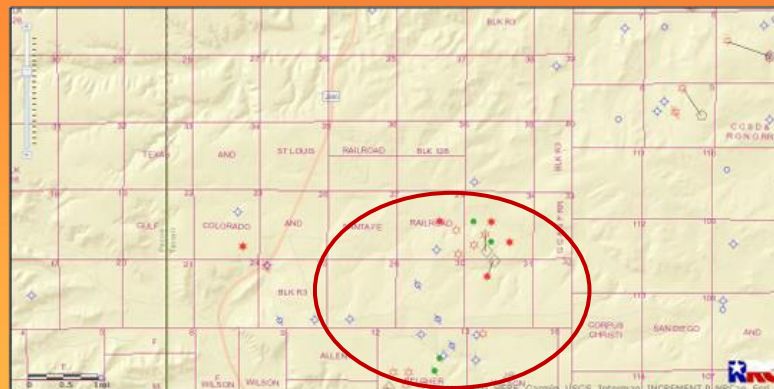
Highly Prolific
Oil and Gas Production



Pinon (Overthrust) Field
869 Productive Wells
Feb 1983-Nov 2021
Oil/Condensate (BBLs) **510,804**
Gas Well/Casinghead Gas (MCF) **749,094,198**

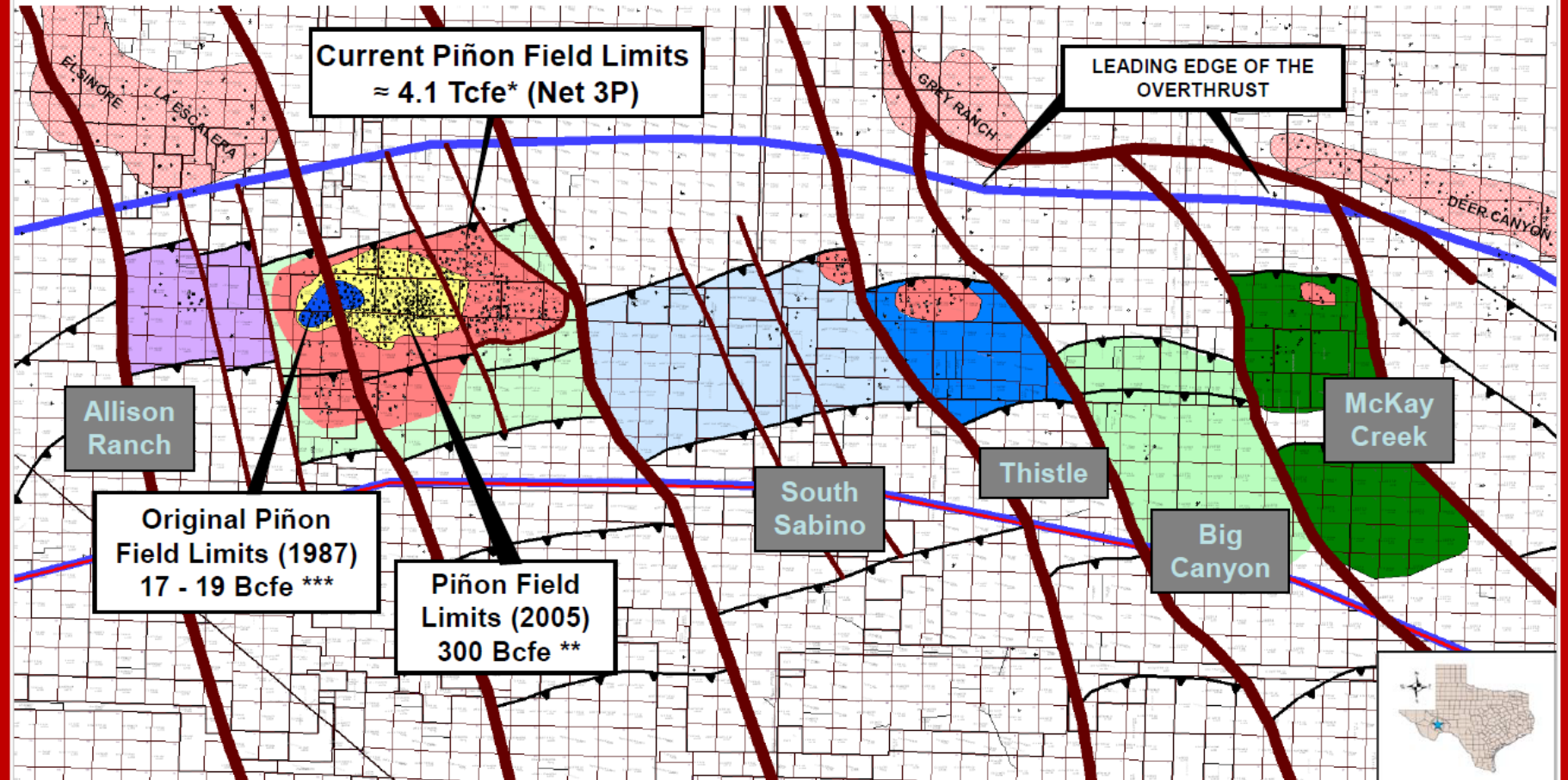


Thistle (Overthrust) Field
40 Productive Wells
Jun 1984-Nov 2021
Oil/Condensate (BBLs) **3,032,725**
Gas Well/Casinghead Gas (MCF) **5,247,644**



McKay Creek (Caballos) Field
17 Productive Wells
Aug 1979-Nov 2021
Oil/Condensate (BBLs) **1,322,601**
Gas Well/Casinghead Gas (MCF) **16,347,130**

Pinon – McKay Creek Fields



(SandRidge Energy, 2008)



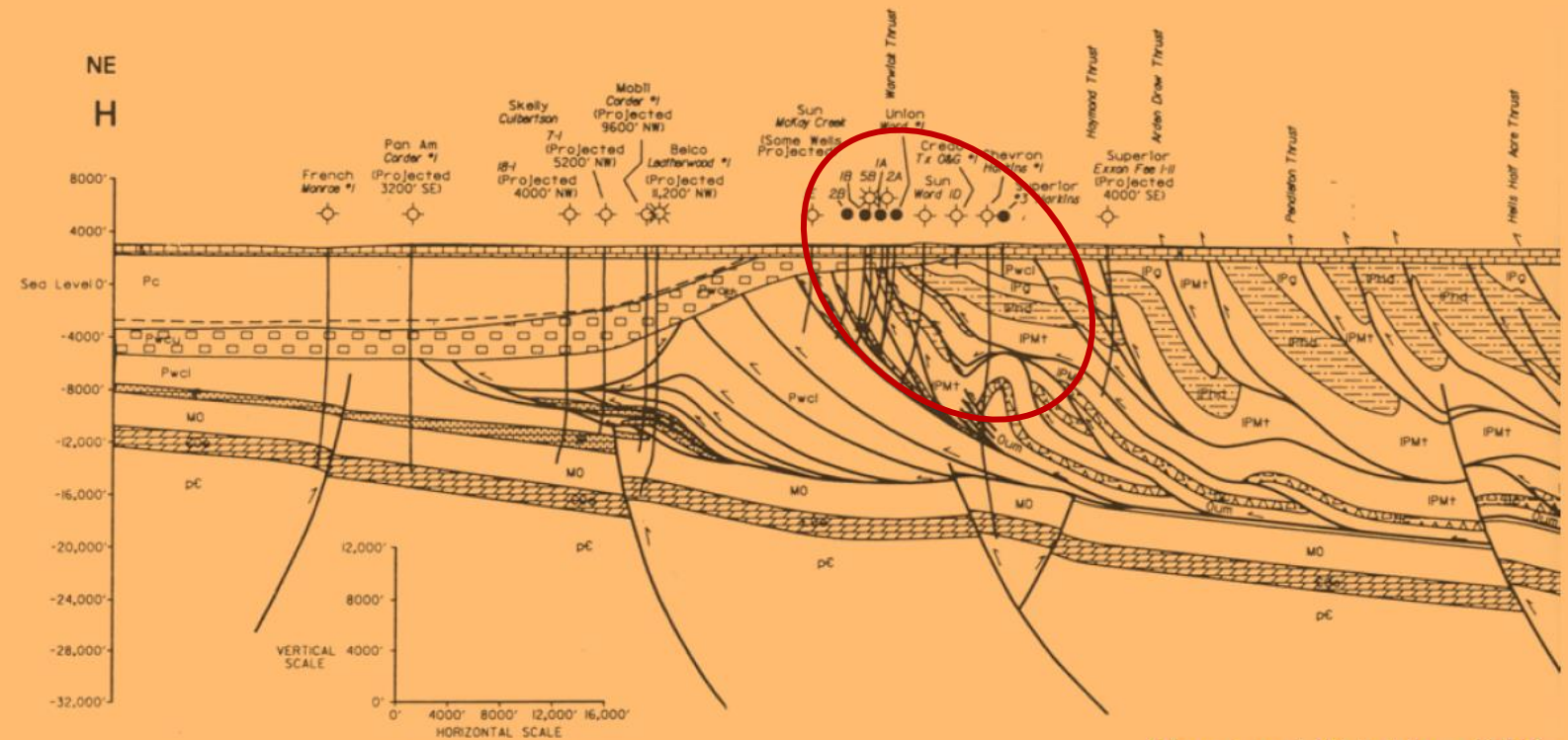
* Based on 2,594 locations

** YE 2005 D&M Reserve Report

*** Reed, T.A. and Strickler, D.L. 1990, Structural Geology and Petroleum Exploration of the Marathon Thrust Belt, West Texas: WTGS/PBS-SEPM Field, Seminar Handbook, p.51.

Upthrust Blocks
Trapping Oil and Gas

Structural Cross Section McKay Creek Field

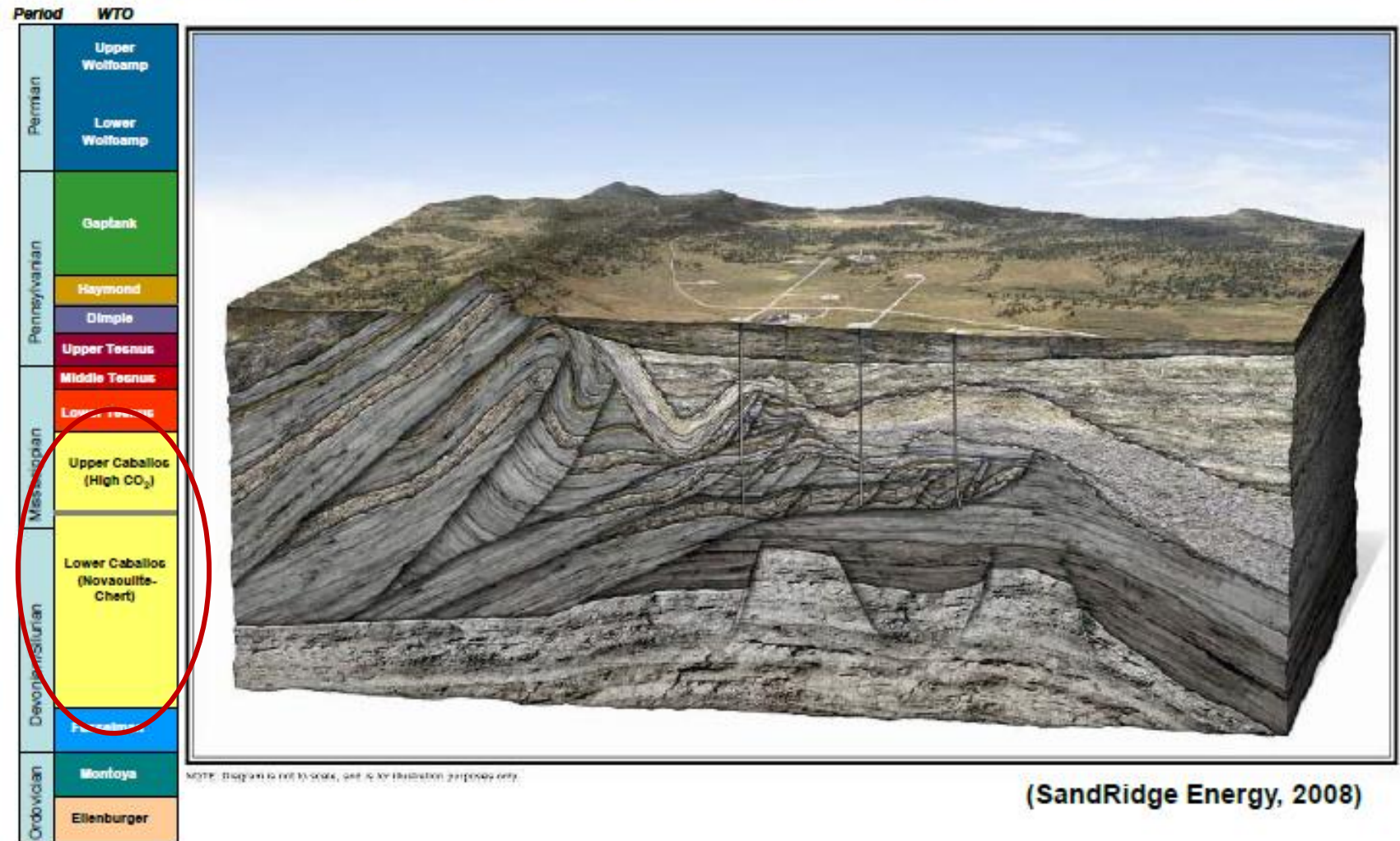


McKay Creek Field
Terrell Co., TX

Upthrust Example

(Reed and Strickler, 1990)

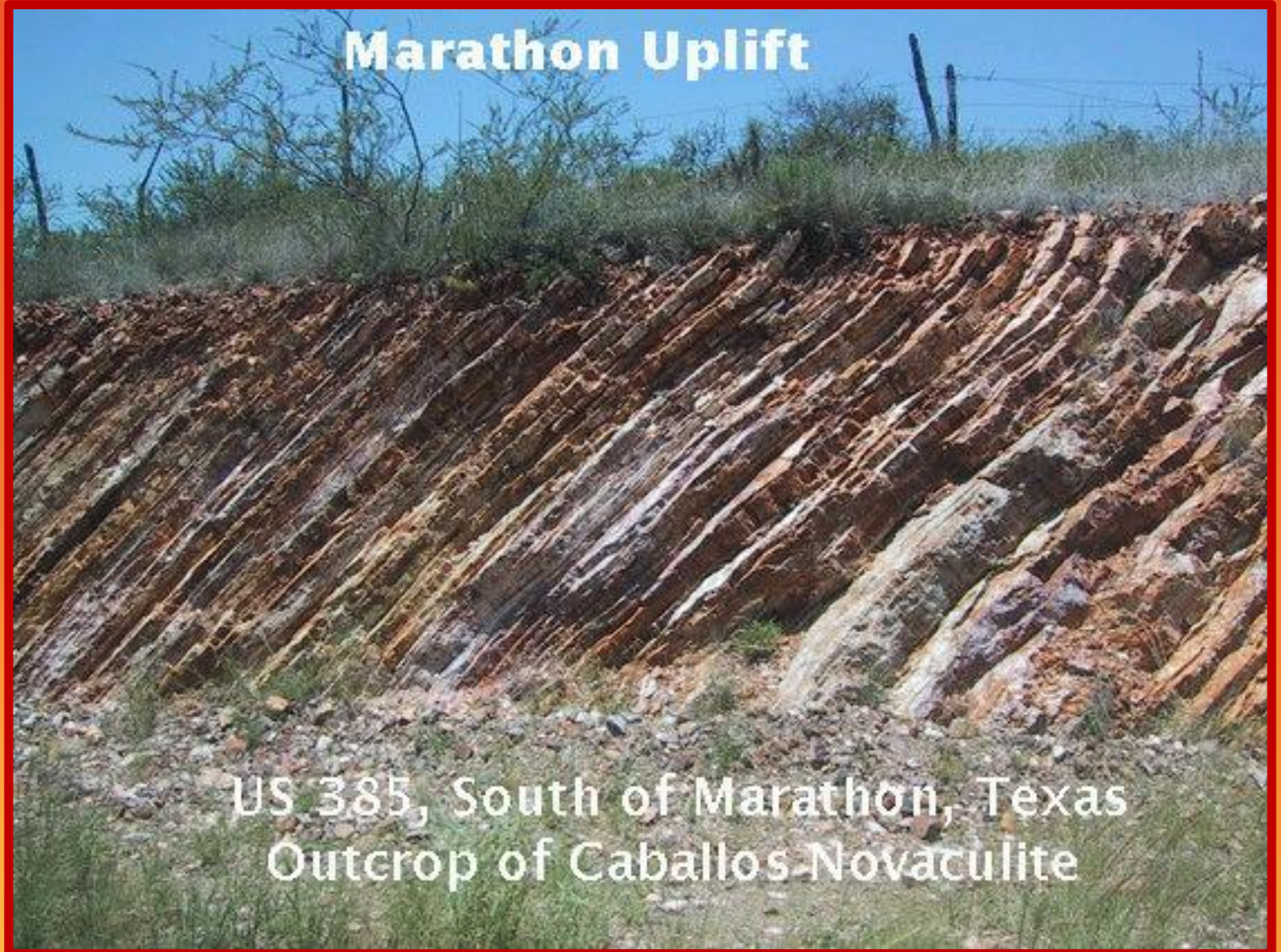
Stratigraphy and Cross Section of the West Texas Overthrust



(SandRidge Energy, 2008)

Stratigraphic Traps

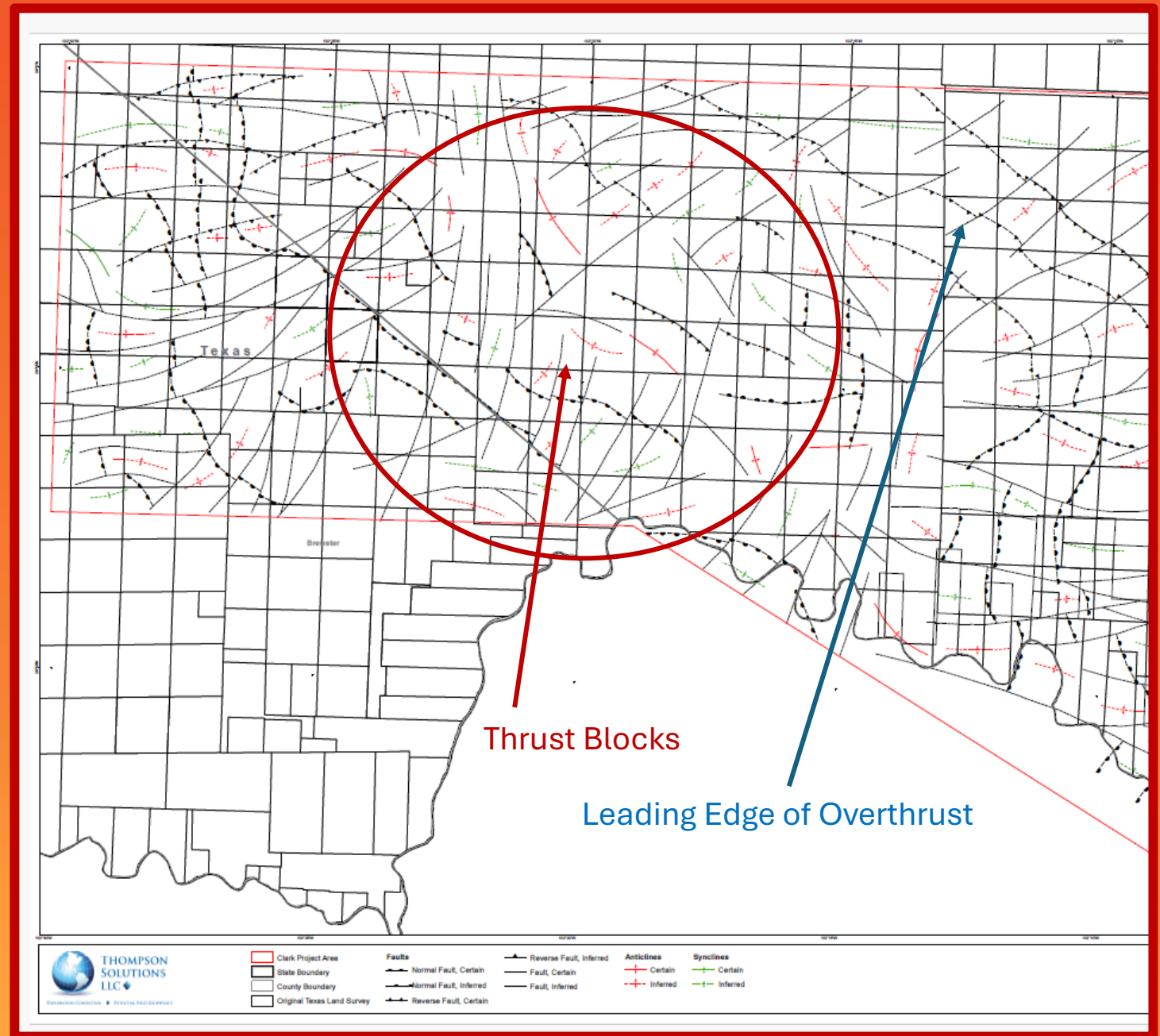
Caballos and Novaculite have been thrust upwards creating a highly fractured system with excellent permeability and porosity.



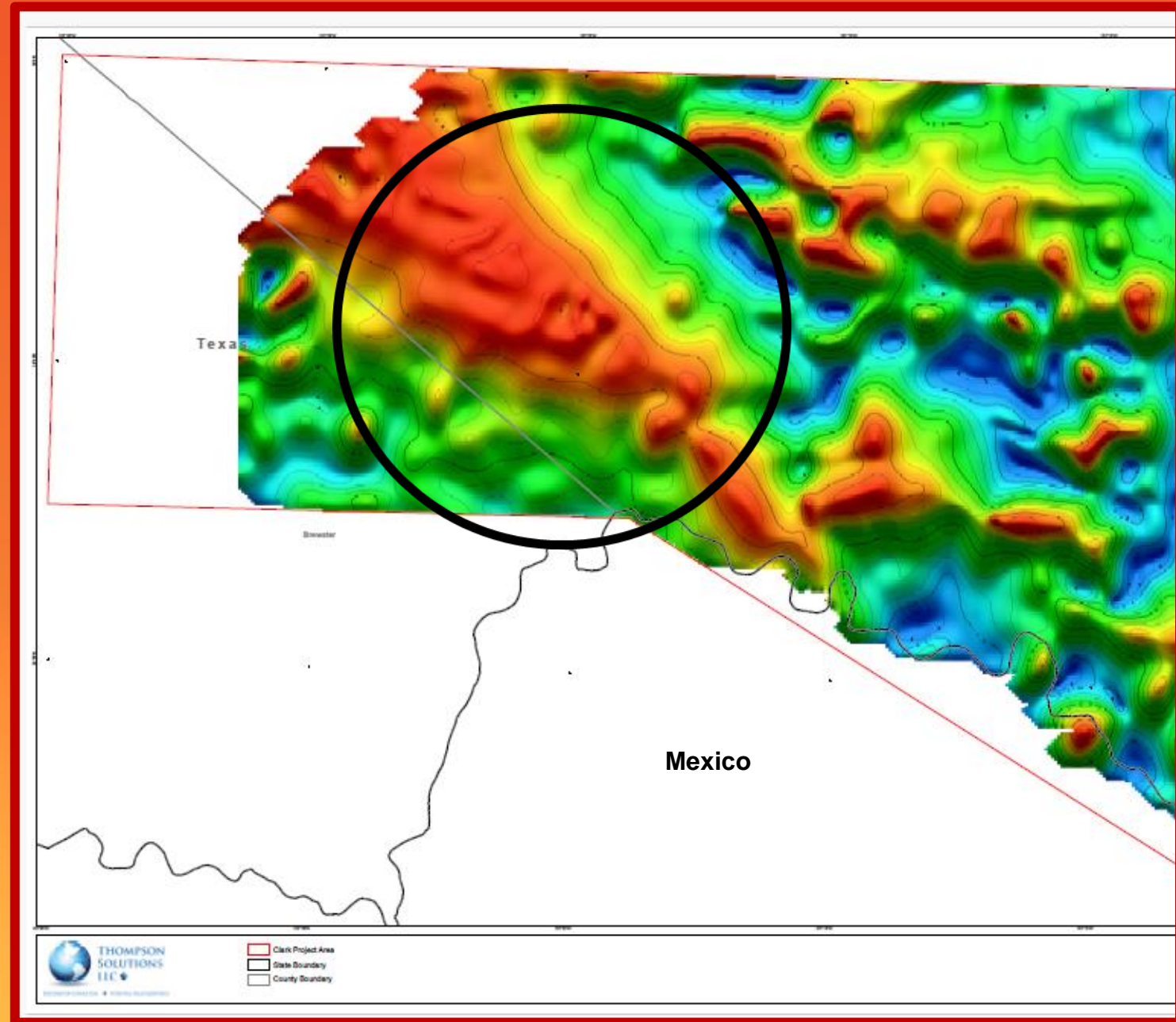
Red Horses West Project

Surface Thrust Faults Indication
and Leading Edge of Overthrust

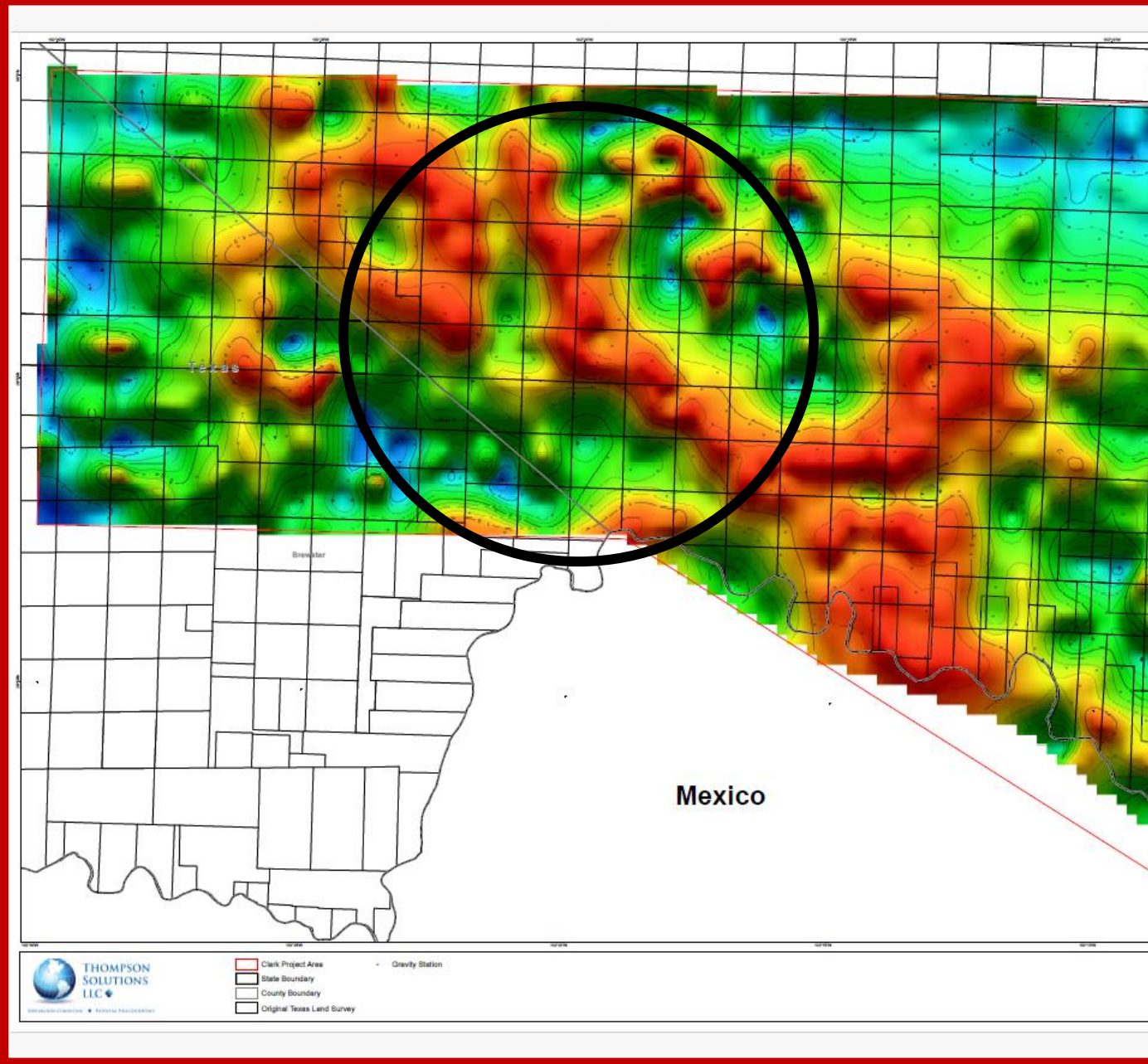
General Area for Drilling Location



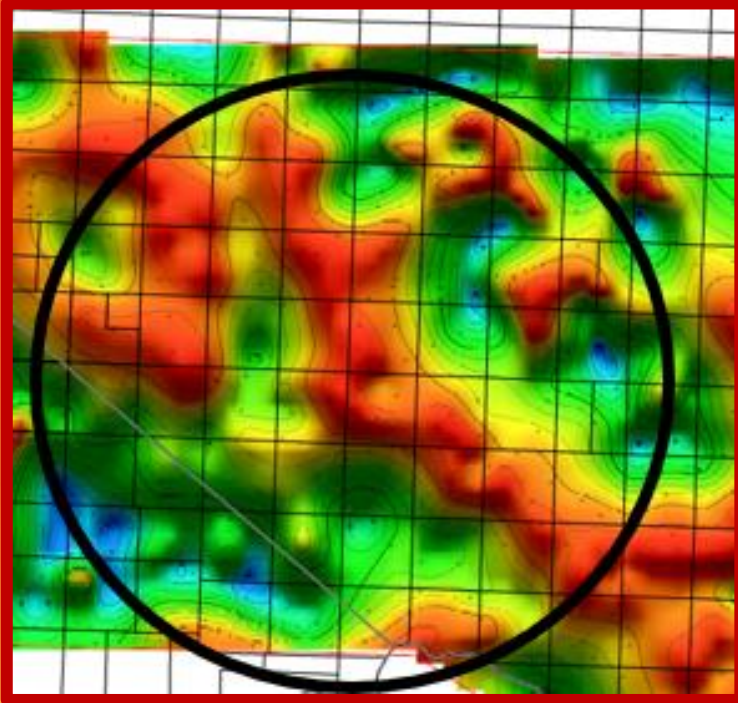
Tilt Magnetics



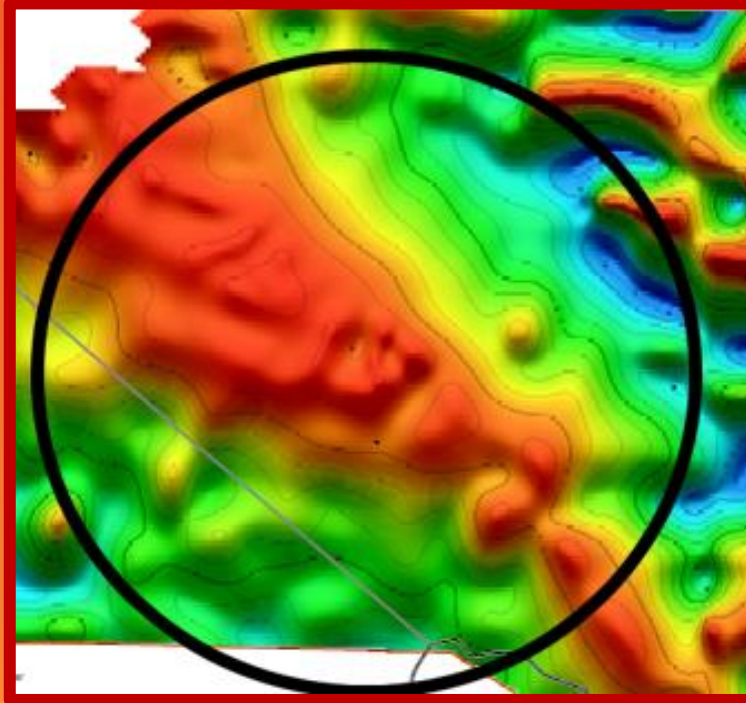
Tilt Gravity



Gravity



Magnetics



Magnetoelectric



Geosciences Anomalies
Indicating Structure and Hydrocarbons

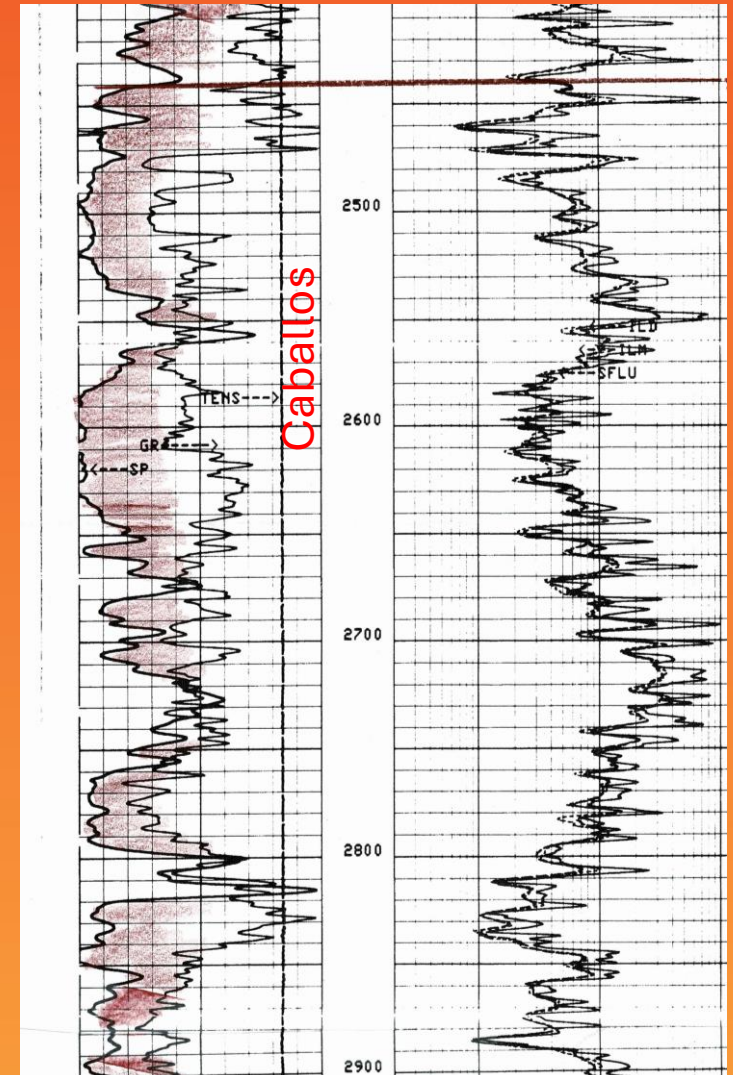
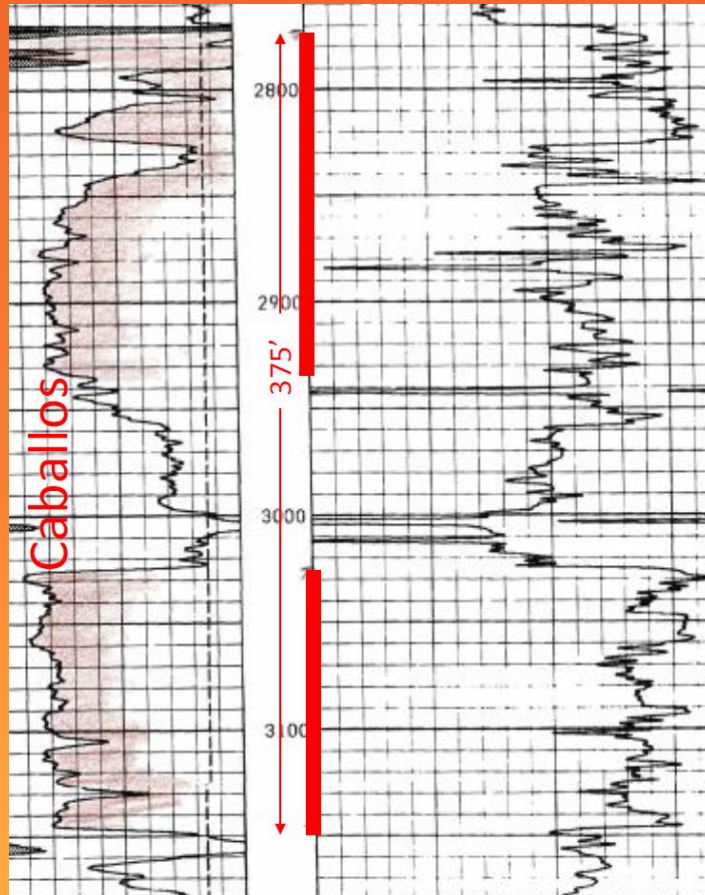
Shell/Downie Ranch #303 API# 42-371-35909
Thistle Production Well
Pecos Co., TX TD at 3,400'

Exxon/Gatlin #1 API# 42-443-30347
Wildcat (Project Key Well)
Terrell Co., TX TD at 25,357'

The Caballos in the two
Logs have the same reservoir
signatures in the Caballos.

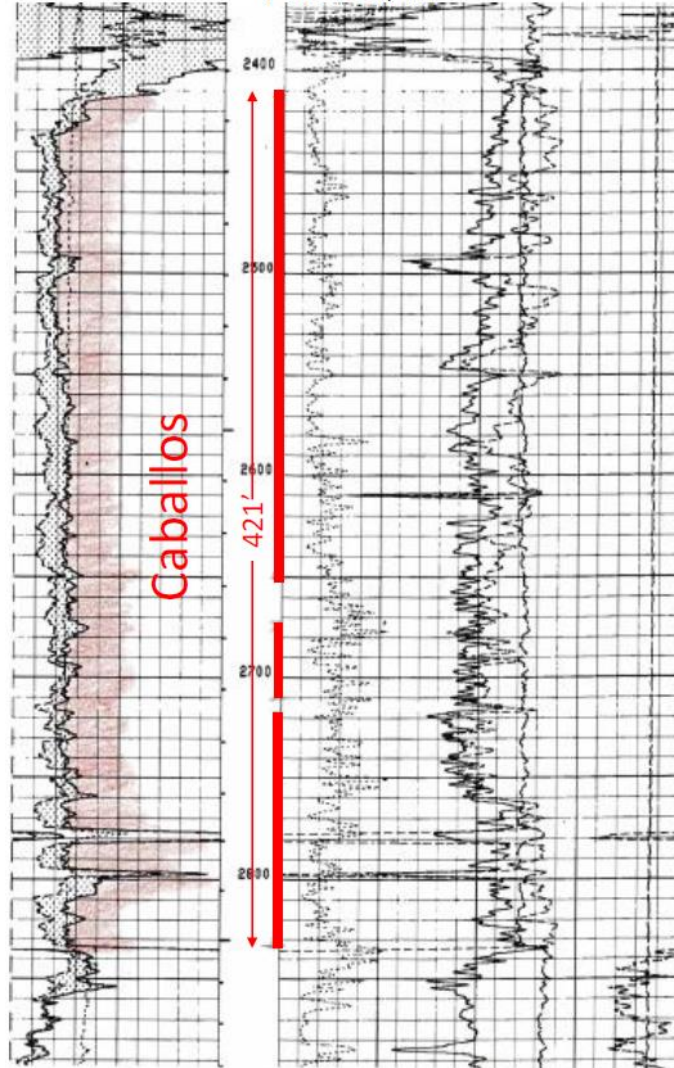
The wells are both within the
leading edge of the overthrust and
follows the same trend.

The wells are approximately 20
miles apart. There is a belief that
there are many more Caballos
and Novaculite reservoirs yet to
be discovered.



Long Section Caballos
Thistle Field
753,952 Bbls Oil
830,815 MCF Gas

Sandridge/Downie Ranch #407 API# 42-371-35637
Thistle Field
Pecos Co., TX



Well History

drillinginfo

Top This Element

API# 42-371-35637
Well# 407
Lease DOWNIE RANCH
Field THISTLE (CABALLOS B)
Lease SANDRIDGE ENERGY, INC.
Operator [Well Do History](#)
County Pecos
State Texas
Location 870.0 BL / 1790.0 SL, GCBSF RR CO/DE LEON, S A-6353 Block:R3 Section:4
Total Depth 3,500
Elevation 3263 GR
Date Spud -
Date TD -
Logs Run -

Prod.	First Production	Most Recent Production	Cumulative (MCF & BBL)	Gravity (SG & API)	Gatherer
Oil	12/1/85	4/1/08	753,952	0.00	SENTL
Gas	12/1/85	4/1/08	830,815	0.00	ROCGC

Completion Info

Compl. Date	Operator	Field	Reservoir	Upper Perf	Lower Perf	Test Date	MCF/D	BO/D	BW/D	FTP	Choke	Pump Meth.
4/26/88	HUNTINGTON ENERGY, L.L.C.	THISTLE (CABALLOS B)	-	2,413.00	2,834.00	-	-	-	-	-	-	-
6/18/86	HUNTINGTON ENERGY, L.L.C.	THISTLE (CABALLOS B)	-	2,413.00	2,834.00	-	-	-	-	-	-	-
11/20/85	HUNTINGTON ENERGY, L.L.C.	THISTLE (CABALLOS B)	-	2,413.00	2,834.00	-	-	-	-	-	-	-

Notes

Casing Info

Size	Depth Set
7	3499.0
9.625	906.0
9.625	906.0
20	40.0

Liner Info

Size	Top	Bottom
------	-----	--------

Tubing Info

Size	Depth Set
2.875	2897.0

Stimulation / Squeeze Shot Info

Depth Interval	Amount and Kind of Material Used
2716 - 2834	(1985 PERFS)
2671 - 2710	(1986 PERFS)
2413 - 2650	(NEW PERFS)ACIDIZED NEW PERFS W/6,000 GALS 15% HCL NEPE ACID

Formation Info

Formation	Depth
BASE CRETACEOUS	550
CABALLOS	2080
ORDOVICIAN	2834

Project Highlights

Shallow Drilling

Prolific Production Histories

Excellent Fractured Reservoirs

Thick Productive Zones

Minimal Stimulation Requirement

