

USA Price List
Effective January 2, 2023

SERENITY™

The complete Shower Drain System



www.serenity.luxury

For Molded (preformed) Shower Bases

Featuring solid Brass construction and designed to fit most popular molded Shower Bases.

Features:

- 4" Round Trim featuring a 3" Threaded Drain Outlet
- Slotted or Flat Trim Inserts - Removable for easy cleaning
- Removable Stainless Steel Hair Catcher supplied with every Trim Top
- Underbody (sold separately) available in ABS, PVC or Brass in Straight and Side Discharge configurations
- All Underbody's and Slotted Trims are certified to ASME A112.18/2/CSA B125.2 and bear the "cCSAus Meets UPC" mark. They comply with the requirements of the UPC, IPC and NPC codes.
- All Flat Trims are certified to ASME A112.18/2/CSA B125.2 and bear the "cCSAus" mark. They comply with the requirements of the IPC and NPC codes.

1 Trim* for Molded (preformed) shower base Suffix



100
Flat Round

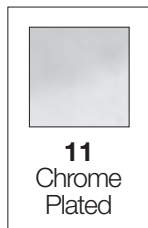


150
Slotted Round



Haircatcher
(Included)

2 Finish Suffix[†]



11
Chrome
Plated



22
Brushed
Nickel



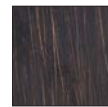
33
Matte
Black



44
White



55
Polished
Nickel



66
Venetian
Bronze



77
Luxe
Bronze



88
Brushed
Gold

Trim* Part # Configurator - (example) BCS.100.11

BCS. **.**

TRIM SUFFIX
(3 CHAR.)

FINISH SUFFIX
(2 CHAR.)

1

2

Trim* - List Price

Finishes - List Price

| STYLE | PART # | 11 | 22 | 33 | 44 | 55 | 66 | 77 | 88 |
|---------------|-------------------------|----------|----------|----------|----------|----------|----------|----------|----------|
| FLAT ROUND | BCS.100.(FINISH SUFFIX) | \$175.00 | \$200.00 | \$300.00 | \$300.00 | \$300.00 | \$300.00 | \$300.00 | \$300.00 |
| SLOTTED ROUND | BCS.150.(FINISH SUFFIX) | \$175.00 | \$200.00 | \$300.00 | \$300.00 | \$300.00 | \$300.00 | \$300.00 | \$300.00 |

*See back page for Underbody options - Sold Separately

[†] Split Finish option available. Contact for pricing.

For Tile Shower Bases

Featuring solid Brass construction and designed for use with Tile Shower Bases.

Features:

- 4" x 4" Square or 4" Round Trim featuring a 2" Threaded Drain Outlet
- Slotted or Flat Trim Inserts - Removable for easy cleaning
- Removable Stainless Steel Hair Catcher supplied with every Trim Top
- Underbody (sold separately) available in ABS, PVC, Brass or Cast Iron in Straight and Side Discharge configurations
- All Underbody's and Slotted Trims are certified to ASME A112.18/2/CSA B125.2 and bear the "cCSAus Meets UPC" mark. They comply with the requirements of the UPC, IPC and NPC codes.
- All Flat Trims are certified to ASME A112.18/2/CSA B125.2 and bear the "cCSAus" mark. They comply with the requirements of the IPC and NPC codes.

1 Trim* for Tile shower base Suffix



102
Flat Round



202
Flat Square



152
Slotted Round

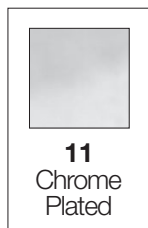


252
Slotted Square



Haircatcher
(Included)

2 Finish Suffix



11
Chrome
Plated



22
Brushed
Nickel



33
Matte
Black



44
White



55
Polished
Nickel



66
Venetian
Bronze



77
Luxe
Bronze



88
Brushed
Gold

Trim* Part # Configurator - (example) BCS.102.11

BCS. **.**

TRIM SUFFIX
(3 CHAR.)

FINISH SUFFIX
(2 CHAR.)

1

2

Trim* - List Price

Finishes - List Price

| STYLE | PART # | 11 | 22 | 33 | 44 | 55 | 66 | 77 | 88 |
|----------------|-------------------------|----------|----------|----------|----------|----------|----------|----------|----------|
| FLAT ROUND | BCS.102.(FINISH SUFFIX) | \$200.00 | \$250.00 | \$375.00 | \$375.00 | \$375.00 | \$375.00 | \$375.00 | \$375.00 |
| FLAT SQUARE | BCS.202.(FINISH SUFFIX) | \$200.00 | \$250.00 | \$375.00 | \$375.00 | \$375.00 | \$375.00 | \$375.00 | \$375.00 |
| SLOTTED ROUND | BCS.152.(FINISH SUFFIX) | \$200.00 | \$250.00 | \$375.00 | \$375.00 | \$375.00 | \$375.00 | \$375.00 | \$375.00 |
| SLOTTED SQUARE | BCS.252.(FINISH SUFFIX) | \$200.00 | \$250.00 | \$375.00 | \$375.00 | \$375.00 | \$375.00 | \$375.00 | \$375.00 |

*See back page for Underbody options - Sold Separately

Hex Drain Trim For Tile Shower Bases

Featuring solid Brass construction and designed for use with Tile Shower Bases.

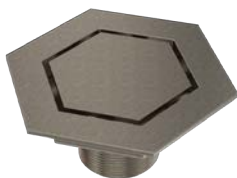
Features:

- 5-3/4" x 5-3/4" Hexagonal Trim featuring a 2" Threaded Drain Outlet
- Flat Trim Insert is removable for easy cleaning
- Removable Stainless Steel Hair Catcher supplied with every Trim Top
- Underbody (sold separately) available in ABS, PVC, Brass or Cast Iron in Straight and Side Discharge configurations.
- All Underbody's and Slotted Trims are certified to ASME A112.18/2/CSA B125.2 and bear the "cCSAus Meets UPC" mark. They comply with the requirements of the UPC, IPC and NPC codes.
- All Flat Trims are certified to ASME A112.18/2/CSA B125.2 and bear the "cCSAus" mark. They comply with the requirements of the IPC and NPC codes.

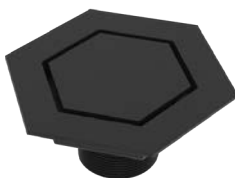
1 Trim* for Tile shower base Suffix



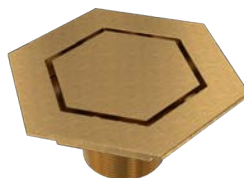
BCS.502.11
Chrome
Plated



BCS.502.22
Brushed
Nickel



BCS.502.33
Matte
Black

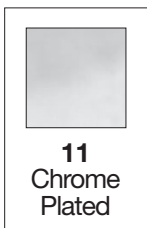


BCS.502.88
Brushed
Gold



Haircatcher
(Included)

2 Finish Suffix



11
Chrome
Plated



22
Brushed
Nickel



33
Matte
Black



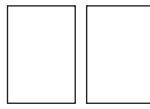
88
Brushed
Gold

Trim* Part # Configurator - (example) BCS.502.11

BCS.502.

TRIM SUFFIX
(3 CHAR.)

1



FINISH SUFFIX
(2 CHAR.)

2

Trim* - List Price

| | | Finishes - List Price | | | |
|--------------------------------------|-------------------------|-----------------------|----------|----------|----------|
| STYLE | PART # | 11 | 22 | 33 | 88 |
| HEX Drain Trim for Tile Shower Bases | BCS.502.(FINISH SUFFIX) | \$400.00 | \$450.00 | \$525.00 | \$525.00 |

*See back page for Underbody options - Sold Separately

Split Finish - For Tile Shower Bases

Featuring solid Brass construction and designed for use with Tile Shower Bases.

Features:

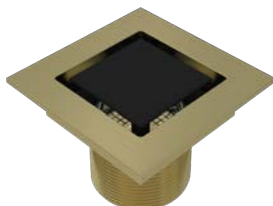
- Featuring a 2" Threaded Drain Outlet
- Removable Insert for easy cleaning
- Mix Trim Body and Trim Insert Finishes for a customized look
- Removable Stainless Steel Hair Catcher supplied with every Trim Top
- Underbody (sold separately) available in ABS, PVC, Brass or Cast Iron in Straight and Side Discharge configurations
- All Underbody's and Slotted Trims are certified to ASME A112.18/2/CSA B125.2 and bear the "cCSAus Meets UPC" mark. They comply with the requirements of the UPC, IPC and NPC codes.
- All Flat Trims are certified to ASME A112.18/2/CSA B125.2 and bear the "cCSAus" mark. They comply with the requirements of the IPC and NPC codes.

1 Split Finish Trim*† for Tile shower base Suffix



102
Flat Round

Example:
BCS.102.33.11
shown



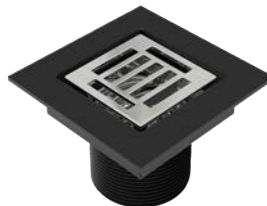
202
Flat Square

Example:
BCS.202.88.33
shown



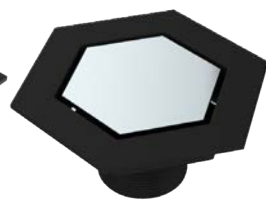
152
Slotted Round

Example:
BCS.152.44.77
shown



252
Slotted Square

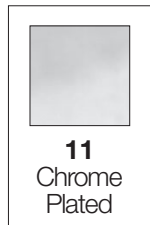
Example:
BCS.252.33.11
shown



502
Flat Hexagonal

11,22,33 & 88 finishes
available only.
Example:
BCS.502.33.11
shown

2 3 Trim Body and Insert Finish Suffix (Can be mixed†)



11
Chrome
Plated



22
Brushed
Nickel



33
Matte
Black



44
White



55
Polished
Nickel



66
Venetian
Bronze



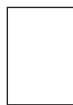
77
Luxe
Bronze



88
Brushed
Gold

Trim* Part # Configurator - (example) BCS.102.33.11

BCS.



TRIM
SUFFIX
(3 CHAR.)

1



TRIM BODY
FINISH SUFFIX
(2 CHAR.)

2



TRIM INSERT
FINISH SUFFIX
(2 CHAR.)

3

Split Finish Trim*† - List Price

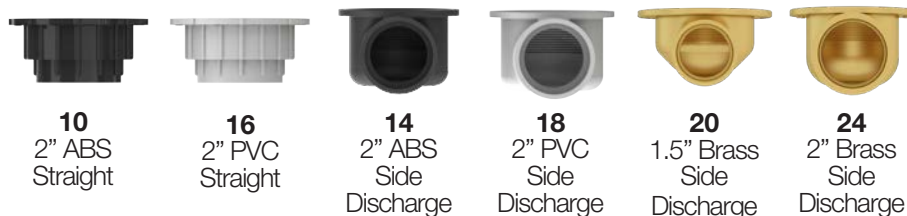
| STYLE | PART # | List Price |
|----------------|---|------------|
| FLAT ROUND | BCS.102.(TRIM BODY SUFFIX).(INSERT FINISH SUFFIX) | \$375.00 |
| FLAT SQUARE | BCS.202.(TRIM BODY SUFFIX).(INSERT FINISH SUFFIX) | \$375.00 |
| SLOTTED ROUND | BCS.152.(TRIM BODY SUFFIX).(INSERT FINISH SUFFIX) | \$375.00 |
| SLOTTED SQUARE | BCS.252.(TRIM BODY SUFFIX).(INSERT FINISH SUFFIX) | \$375.00 |
| FLAT HEXAGONAL | BCS.502.(TRIM BODY SUFFIX).(INSERT FINISH SUFFIX) | \$525.00 |

* See back page for Underbody options - Sold Separately

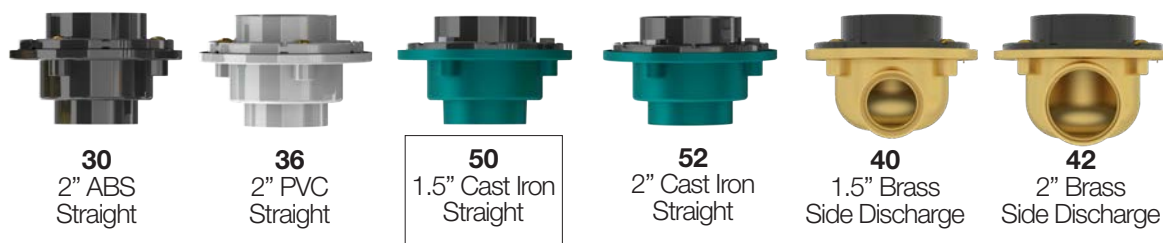
† Trim Body and Trim Insert finishes can be mixed or matched

1 Underbody** Suffix

For Molded (preformed) Base (Trim Models 100 & 150 only)
Washer and Slip Ring included with Underbody for Molded (Preformed) Base



For Tile Base (Trim Models 102, 152, 202, 252, 502 only)



Underbody** Part # Configurator - (example) BCS. 50

BCS.
UNDERBODY SUFFIX
(2 CHAR.)

1

Underbody** - List Price

| PART # | DESCRIPTION | LIST PRICE |
|---|--|------------|
| Underbody for Molded (preformed) Bases. Includes Washer and Slip Ring. | | |
| BCS.10 | 2" ABS Straight for Molded (preformed) Bases | \$12.00 |
| BCS.16 | 2" PVC Straight*for Molded (preformed) Bases | \$12.00 |
| BCS.20 | 1.5" Brass Side Discharge for Molded (preformed) Bases | \$155.00 |
| BCS.14 | 2" ABS Side Discharge for Molded (preformed) Bases | \$65.00 |
| BCS.18 | 2" PVC Side Discharge for Molded (preformed) Bases | \$65.00 |
| BCS.24 | 2" Brass Side Discharge for Molded (preformed) Bases | \$155.00 |
| Underbody for Tile Bases | | |
| BCS.30 | 2" ABS Straight for Tile Bases. | \$18.00 |
| BCS.36 | 2" PVC Straight for Tile Bases. | \$18.00 |
| BCS.50 | 1.5" Cast Iron Straight for Tile Bases. | \$40.00 |
| BCS.52 | 2" Cast Iron Straight for Tile Bases. | \$40.00 |
| BCS.40 | 1.5" Brass Side Discharge for Tile Bases. | \$165.00 |
| BCS.42 | 2" Brass Side Discharge for Tile Bases. | \$165.00 |
| Hair Catcher | | |
| SD-HCSS | Stainless Steel Hair Catcher for Molded (preformed) Base | \$15.00 |
| SD-HCSS-2 | Stainless Steel Hair Catcher for Tile Base | \$15.00 |

**All Underbody's are certified to ASME A112.18/2/CSA B125.2 and bear the "cCSAus Meets UPC" mark. They comply with the requirements of the UPC, IPC and NPC codes.
See previous pages for Trims - Sold Separately