

WorldWide SUPER MART™

Call Now!
850-547-0102



Apparel
119

DRILLERS LIFE

Apparel and other items celebrating what you do best ~ drill.

www.drillerslife.com

119-683

Appraisals
120

QUICK CASH MONEY
Paid for Drill Rigs, Pump Hoists, Mud Pumps, Drill Pipe, & Bits.
RENE HENDON Tel: 281-260-0880

120-120

Bits
220

INTERNATIONAL DRILL BIT SUPPLIER.

KS/BIT
KNOWLEDGEABLE - DEPENDABLE - GLOBAL

NEW SURPLUS **RERUN RETIP**

OVER 15,000 BITS IN STOCK
MILL TOOTH TCI - SEALED OPEN BEARING

800.213.1389 SALES@KSBIT.COM

220-648

JERRY'S BIT SERVICE INC.
710 CR 3336
Paradise TX 76073 USA

(940) 683-2874 Fax: (940) 683-2874
Mobile: (940) 393-2394

Contact: Jerry Shoemaker
jerryshoemaker54@yahoo.com

Jerry's Bit Service Inc. will meet your every drilling need. We service and sell tricone, PDCs, as well as hole openers. Rather rent a PDC? No problem. Got you covered. Our company will repair your PDC regardless if it is a rental or purchase.

220-919

WorldWide Sales Of New & Rebuilt Roller Cones and PDCs
Complete Repair of PDCs



Call, Fax, or Email For Quotes
P.O. Box 1067
Archer City, Texas 76351
940-574-4977 Fax
Abilene Sales: 713-254-8376
325-864-7075 Cell
e-mail: usabit@usarockbit.com
Visit Our Web Site At
<http://www.usarockbit.com>
We Accept Visa, Master Card & Discover

We Purchase New and Used Bits
OIL FIELD, WATER WELL & ENVIRONMENTAL
NEW BITS IN STOCK
CALL US FOR SIZES AND TYPES
1-800-451-2906 TOLL FREE

220-162

Drill King INTERNATIONAL UP TO 48 in.

ISO www.DrillKing.net MADE IN THE USA
Sales@DrillKing.net
866-900-BITS

220-1108

Moab Bit & Tool Co., Inc.



PDC's, tri-cones, custom bits, hole openers, drill pipe, subs & stabilizers.

Doing business for over 50 years.

24 hr. service
PH 800-453-1052 • FX 435-259-2968
sales@moabbit.com • moabbit.com

220-822

HOFFMAN DIAMOND PRODUCTS

sales@hoffmandiamond.com
www.hoffmandiamond.com
800-444-4180

NEW! Diamond Grinding Cups

Quality, Integrity, and Customer Service

- Diamond Core Bits
- Casing Shoes
- Reaming Shells
- Diamond Cup Grinders

220-712

DRILL BITS

Tricone - PDC - Drag Bits
Hammer Bits - DTH
Hammers
Hole Openers
Reamers & much more!

HELANBAK.COM
601-736-6112



MANUFACTURER

220-1213

Boom Trucks
225

Terex 23½-ton boom truck on 2002 Peterbilt, 27,000 miles.....**\$98,000**
National 800D 23-ton crane, 8685 hrs, 4-section x 100' boom, on 2003 Peterbilt 330, Cummins ISC, 120,362 miles.....**\$99,000**
Call Alan Lang: 801-554-2419

225-1027

Breakout Tools
238

SEMCO, INC.
All-Hydraulic Hydrorench
S112H in Stock
1-12" Four Rollers
Breaks Pipe, Makes Pipe to Torque Specs
800-541-1562

238-135

BLACKDOG INDUSTRIES, LLC
Richland, WA

CHECK OUT OUR UPDATED WEBSITE!

Specializing in Hydraulic Breakout Tools

- Models Ranging from: 1.5" - 10.75"
- Torque up to 21,000 Ft-Lbs
- Optional Rod Spinner
- Optional Control Panel

NEW MODELS ARE AVAILABLE!!!

(509)946-6400
Email: sales@blackdogind.com
www.blackdogind.com

238-574

CALL 850-547-0102

CALL 850-547-0102

Business Opportunity
245



All Drilling Equipment for Sale
1979 CP 650WS drill, mtd on Int'l PayStar 5000.
1999 Cat® water supply truck, mtd on Int'l PayStar 5000, 2000lb+ HIAB.
After 51 years in business it is time to retire. All equipment is owner operator maintained and in good working order. If interested in being your own boss in a vital industry call Don 506-339-6214.

245-512

For Sale!

Complete Well Drilling, Pumps, and Plumbing Business.
Central Wisconsin 715-498-7427

245-542

Cable Tool Rigs
305

22W with Atlas casing hammer, (2) 55 SpeedStars, and Alten 32A, 24A. Call for price on rigs.

269-963-2529 or

E-mail: cablewelldriller42@yahoo.com
Ray Leonard, Battle Creek, MI USA

305-170

Twin Disc Clutches for your BE Rigs
We **Buy** and **Sell** All Makes & Models!

For Sale - BE Rigs All Sizes!

Wanted - BE Rigs All Sizes!

NEW Smeal / Hunke Pump Hoist

Reese Rig & Tool Co. LLC - 740-408-0725
neh810@yahoo.com reeserig.com

305-982

Cable Tools
307

RAMPP COMPANY
CARBIDE BUTTON BITS
CABLE DRILLING & FISHING TOOLS
800-272-7886
www.RAMPPCO.COM

307-518

Hocker Drilling and Fishing Tools
Special Price on Cable Tools! We accept Visa & Master Card. New & Used Cable Tools, Rope Sockets, Stems and Bailers.
Call 270-926-2889

307-107

Casing Tools
320



Torch Guides



Torch Guides 6" thru 16"
Mix & Match for a 20% discount
6" Sale Price.....\$59.00 • 8".....\$79.00

For all your drilling products and supplies,
visit us online:

www.americawestdrillingsupply.com

www.awds.com

(800) 800-8444 • (775) 355-1199

sales@awds.com

320-490

TekMark Industries



Internal Casing Lifter 35 Tons



Flush Joint Elevator



Casing Holder 35 Tons

PVC Cutoff & Torch Guide
DTH Spear - PVC Puller
Heavy Column Pipe Holder
Other Casing Tools
tekmarkwellcasingtools.com
800-747-2485 or 509-747-2485

320-254

Compressors
335

Air Compressors for Sale!

IR 1170/350

Skid mtd. portable Atlas Copco 976/365

swneilly@gmail.com

814-598-1320

335-400

R & R DRILLING INC.

800-874-3907

PH. 423-626-5302 FAX. 423-626-1232

E-mail: airdocron1@gmail.com



SULLAIR

Distributor of
SULLAIR Compressors

INGERSOLL-RAND

AIR COMPRESSORS

NEW & REBUILT

HR2s - HR2.5

AIRENDS IN STOCK



Schramm Distributor

GHH - RAND

Distributor of Genuine GHH Rand Parts

Will Ship Worldwide!

**NEW & REBUILT SULLAIR
& GHH COMPRESSORS
SHIPPING WORLDWIDE**

Sullair 750/350 to 1350/500

GHH 204/128 and CF 1000

Excellent Exchange Prices!

335-183

900 cfm/350 psi Sullair rebuilt air end
model 02250056-648.....\$15,000

1170 cfm/350 psi Ingersoll-Rand/Cat®
C15. New cooler, skid, and paint. Looks
better than new.....\$99,000

Gardner Denver Joy/WB12 booster/
Cat® C16.....\$95,000

Joy WB12 booster/Det. series 60..\$50,000

Joy WB12 booster/Det. 12V 92 ..\$60,000
Call Alan Lang: 801-554-2419

335-1027

C
A
L
L

8
5
0
-
5
4
7
-
0
1
0
2

C
A
L
L

8
5
0
-
5
4
7
-
0
1
0
2

Direct Push Drills
401



Stocking Distributor of Genuine Geoprobe®
Tooling & Supplies



ECT Specializes in:

PrePacked Well Screens

Injection Tooling

Vapor Sampling

Manholes (H20, M-306, Aircraft Rated)

Johnson Screens® Products

Proactive Pumps® Master Distributor

888-240-4328 609-631-8939 (fax)609-631-0993

11 Black Forest Road, Hamilton, NJ 08691

ectmfg.com

proactivepumps.com torquerplug.com

401-719

Drill Collars
425

NEW (15) 4¾" OD Drill Collars
R-2 with 3½" IF Connection

Danny Stull: dannystull.jws@gmail.com

Ph: 405-794-3600

425-784

Drill Pipe
435

200+ pieces 4½ external flush drill pipe,
30-foot lengths, 2-7/8 reg joints, RD20 type,
some new, others like new...\$20 per foot
Call Alan Lang: 801-554-2419

435-1027

NEW & USED
DRILL PIPE

Mayhew Reg - Mayhew JR
AWJ-NWJ-IF-API-FEDP
Up to 6-1/2" OD Pipe

HELANBAK.COM
601-736-6112



MANUFACTURER

435-1213

Flush Joint & Bottleneck Drill Pipe
IN STOCK - SURPLUS & USED
2-3/8", 2-7/8", 3-1/2", 4", 4-1/2", 5, 5-1/2"
Economy Drill Pipe, Tool Joints for
WELD-ON & SCREW-ON Applications.
RENE HENDON 281-260-0880

435-120

75 Joints (1500 ft) 3½" x 20'
\$4.50 per ft
903-714-1256

435-1219

Drilling Products
458

IES DRILLING SUPPLIES
THE MUD MEN

- Water Well - HDD - Geothermal - Env. & Remediation

•Drilling Mud •Polymers

•PVC and Stainless Screens

•Above Ground Protectors •Manholes

IES Exclusive Products

We deliver to all
50 states
7 days a week!
Give us a call!



Cam-lock Manholes
Aluminum Anodized
Procovers

104 E. DeVore St. Pearl City, IL 61062

Ph: 800-388-2906 Fax: 815-443-2893

E-mail: sales@iesdrillingsupplies.com

www.iesdrillingsupplies.com

458-814

Electric Motors
510

-WANTED-

20 to 300 hp vertical hollow
shaft pump motors.

Good or Bad! Will pick up!!

800-541-1562

510-135

Elevators
515

ELEVATOR SPECIAL

1", 1¼", & 2" Slip-type Elevator w/kwik-clamp

Package Special

All 4 pieces for \$1000

DRILLING EQUIPMENT SALES, INC.

2515 Highway 70 SW • Hickory, NC 28602



828-322-3056

www.drillingequip.com

515-121



• Kwik Klamps
• PVC Pipe Elevators
• Flush Joint PVC Pipe Clamps

J&K Tool Company, Inc.

www.jktool.com • sales@jktool.com

320-563-4967

515-187



SEMCO INC.

1" Thru 16" Elevators
All steel with safety latch.

800-541-1562

Fax 719-336-2402

www.SEMCOoflamar.com

Ship by same day



515-135

Easy Lift
Casing Elevators



6" and 8" easy lift casing elevators provide
a positive grip on the casing without the
need for weld-on tabs. Carbide teeth dig into
casing on both sides.

Set casing FAST • Grab & Go
No slings included

For all your drilling products and supplies,
visit us online:

www.americawestdrillingsupply.com

www.awds.com

(800) 800-8444 • (775) 355-1199

sales@awds.com

515-490

SkyRex

Water Well Elevators
1" to 24"

Also Lightweight
PVC Elevators

SAME DAY SHIPPING!
Rex McFadden Co., Inc.
806-791-3731

See our ad on page 24.

www.rexmcfadden.com



REX MCFADDEN Co.
DRILLING EQUIPMENT

515-123

C
A
L
L
8
5
0
-
5
4
7
-
0
1
0
2

C
A
L
L
8
5
0
-
5
4
7
-
0
1
0
2

Foundation Equipment
622



2009 Klemm KR 806-3D drill, serial number 66263, 2617 hours, newly rebuilt engine, newly rebuilt brakeout tools, double headed.....\$285,000
Call Boland Drilling: 406-761-1063

622-672

Hydro Frac Equipment
815

Kyle Hoist hydrofrac unit, 2500 psi, 175 gpm, 6" packer & 700' steel frac pipe, mtd. on 1996 F-800 with only 19,500 miles on 5.9 Cummins. 304-822-4786
815-216

Hydro fracture unit with triplex pump mtd. on 1992 IHC w/1100 gallon water tank, pipe plus (2) Baski seals.
Call 715-498-7427

815-542

Injection Pumps
820

DU-ALL Injection Pumps



All parts in stock and available for shipment. Overnight delivery available. Call your local parts supplier or Fred's Water Service at (440) 259-5436 with your order or questions.

Fred's Water Service, Inc.

4390 Elberta Road Perry, Ohio 44081
Phone (440) 259-5436
www.fwservice.com
Fax: (440) 259-4795

820-610

Mud Pumps
1120

Gardner-Denver 4x5, 4½x5, 5x6, 5x8, 5½x8, 5x10, 5½x10, 7½x8, or 7½x10 - several used/rebuilt bare pump or skidded & diesel powered. Gaso Fig. 1743 7½x10 skidded w/diesel power. LeRoI 253S2 rebuilt compressor. New American Mfg. 5x6. Stocking distributor for American Mfg. pump parts.

Danny Stull: dannystull.jws@gmail.com
Ph: 405-794-3600

1120-784

GD & Wheatley 4x5 to 7x12
Complete Pump, Gearend, Fluidend
RENE HENDON 281-260-0880

1120-120

Rebuilt to New 4x5 Gardner Denver mud pump.

Priced to sell!

The Rig Doctor's - 317-839-7534
1120-117

FOR SALE: Mission Magnum1
Centrifugal Pump - 3x2x13
bearing good, needs new impeller
Model# 6402021231T

Call for photos: 641-765-4781
1120-934

Mud Systems
1125



MudPuppies ~
For Sale or Rent

New
&
Used!

We are a MudPuppy dealer.
Call for pricing.

ReBearth Products, Inc. Truro, IA
641-765-4781

1125-934

MUDSLAYER MFG.



Where you
come for
Innovation



360-477-0251
www.mudslayermfg.com

Built for Drillers by Drillers

1125-576

Packers
1203



**Water Well
Hydrofracturing
Packers**

4.33" and 4.75" Standard OD Sizes
East and West Coast Locations
Replacement packer elements



DuraFRAC@inflation-packers.com
1-406-446-9940

www.inflation-packers.com

Inflation Packers International, LLC

1203-567

Baski, Inc.

PACKERS,
ASR FLOW
CONTROL
VALVES &
PITLESS
UNITS



1586 S. Robb Way
Denver, CO 80232
Ph: 303-789-1200
Fax: 303-789-0900
info@baski.com

www.baski.com

1203-115



Become part of the new feature on our website - Classifieds Direct!

Call immediately from your mobile device and more!

E-mail Kathy@
worldwidedrillingresource.com

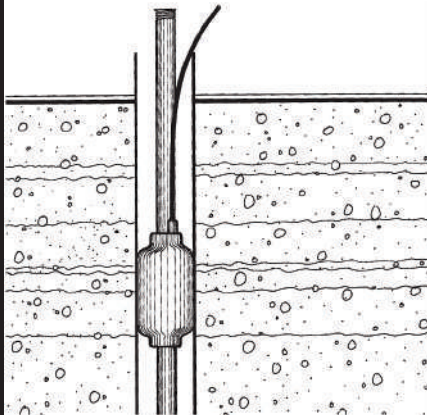
CALL 850-547-0102

CALL 850-547-0102

Packers
1203

Lansas[®] PRODUCTS

Inflatable Well Packers



CUSTOM BUILT
PACKERS FOR ANY
APPLICATION

COMPETITIVE
PRICES

800-452-4902

Manufactured by Vanderlans & Sons
1320 S. Sacramento Street
Lodi CA 95240
209-334-4115
Fax: 209-339-8260
www.lansas.com

1203-1190

**October issue deadlines
are right around the corner!**
Space Reservation:
August 25th
Display & Classified
Ad Copy:
September 1st



QSP Packers, LLC

Quality - Service - Price

Serving Your Complete Packer Needs

◆ **INFLATABLE PACKERS**
Pressure Grout, Wireline,
Water Well, Environmental,
For 1.5" I.D. to 19" I.D. + Hole Diameter

◆ **MECHANICAL PACKERS**

Call us with all your Packer questions!!

Phone: 253-770-0315

Fax: 253-770-0327

Email: info@QSPPackers.com

WebSite: www.QSPPackers.com

1203-409

Perforators
1205



MILLS Knife Type Perforators

For Sale or Rent
4" thru 24"

Montana 406-580-2818

1205-1184

Pump Hoists
1230

2017 Dodge & Ford Trucks Available

\$4,000 Pump Hoist, 8,000# cap., 35'
telescoping mast, 30 gal. oil tank, hyd.
pump, 5T safety hook, hyd. controls &
variable speed engine control..\$17,250

\$6,000 Pump Hoist, 16,000# 3L cap.,
35' telescoping mast, 30 gal. oil tank,
hyd. pump, 5T safety hook, hyd. con-
trols & variable speed engine control.....\$19,750

\$8,000 Pump Hoist, 22,000# 3L cap.,
36' telescoping mast, 30 gal. oil tank,
hyd. pump, 7T safety hook, hyd. con-
trols & variable speed engine control.....\$25,250

\$10,000 Pump Hoist, 30,000# 3L cap.,
40' telescoping mast, 30 gal. oil tank,
hyd. pump, 7T safety hook, hyd. con-
trols & variable speed engine control.....\$35,750

\$12,000 Pump Hoist, 48,000# 4L
cap., 44' telescoping mast, 6000# tail-
out line, 72 gal. oil tank, hyd. pump,
11T safety hook, hyd. controls & vari-
able speed engine control.....\$39,875

\$15,000 Pump Hoist, 60,000# 4L
cap., 48' telescoping mast, 6000# tail-
out line, 72 gal. oil tank, hyd. pump,
11T safety hook, hyd. controls & vari-
able speed engine control.....\$49,385

\$20,000 Pump Hoist, 80,000# 4L
cap., 40' telescoping mast, 6000# tail-
out line, 72 gal. oil tank, hyd. pump,
11T safety hook, hyd. controls, & vari-
able speed engine control.....\$61,150

\$25,000 Pump Hoist, 100,000# 4L
cap., 40' telescoping mast, 6000# tail-
out line, 100 gal. oil tank, hyd. pump,
15T safety hook, hyd. control & vari-
able speed engine control.....\$90,795

\$30,000 Pump Hoist, 120,000# 4L
cap., 40' telescoping mast, 6000# tail-
out line, 100 gal. oil tank, hyd. pump,
15T safety hook, hyd. control & vari-
able speed engine control.....\$106,650

EQUIPMENT IN STOCK

SEMCO S8,000H Basic Pump Hoist,
36' derrick, 2-spd winch, TLO, 2-PR,
SR, OC, LED LK, RC, aux, 9' FB, TB,
2017 Ford F-550.....\$101,720

Contact us for a list
of more used equipment.

SEMCO INC.

719-336-9006/800-541-1562

FAX 719-336-2402

See our Ad on page 3.

semcopumphoist@yahoo.com

www.SEMCOoflamar.com

1230-135



Peterbilt with SEMCO S8000 with
Cummins, automatic, air conditioning,
lots of storage boxes, runs and drives
excellent.....\$55,000

405-819-3204

1230-1012

C
A
L
L
8
5
0
-
5
4
7
-
0
1
0
2

C
A
L
L
8
5
0
-
5
4
7
-
0
1
0
2

Pump Hoists
1230

CUSTOM BUILT RIG



NEW

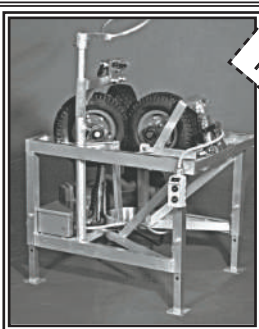
Ready for immediate delivery!
\$15,000 SEMCO Pump Hoist, mtd. on a 2018 Kenworth Allison automatic. Fully tooled and ready for the field...**\$245,000**
 Rick Dreiling: 970-567-7246

1230-130

5T Smeal, 2004 F-350 Super Duty, digital pto, 30' remote, refurbished, new paint, hoses, cables, all new oil pipe racks, low mileage, never in wreck, have before & after pics.....**\$44,900 OBO**

spraguepco@att.net

1230-678



The Original PUMP PULLER

In Production Since 1973

- Portable
- Lightweight
- Economical

- Welded aluminum frame.
- Waterproof motor and electrical system.
- Worm gearbox holds in any position.
- Will handle up to 2" galvanized pipe @ 600 lb. capacity.
- Pull or set 24' per minute.
- Adjustable legs. Extends down to 7". (Optional)

Wheel kit w/handles, winch, swing vise and overhead guide.

Funk Manufacturing
Up-Z-Dazy, Inc.
 30 Myers Road
 Newville, PA 17241
Phone: 717-776-3181
Fax: 717-423-5201

1230-371

NEW and USED Smeal Pump Hoists For Sale: Smeal 3T, 4T, 5T, & 6T

WANTED Smeal pump hoists of all sizes
 Reese Rig & Tool Co. LLC - 740-408-0725
 neh810@yahoo.com reeserig.com

1230-982

Duke Equipment Company, LLC
 "Reliable and Versatile Pump Hoist at an Affordable Price"



See Used Trucks @
www.pumphoist4u.com

1000 E. Oklahoma Avenue
 P. O. Box 215
 Darrouzett, TX 79024
806-624-2200

1230-511

WANTED TO BUY PULSTAR

SMEAL, SEMCO PUMP HOIST
 RENE HENDON 281-260-0880

1230-120

This unit is sold!



\$12,000 SEMCO Pump Hoist
 Please call to place your order
 Rick Dreiling: 970-567-7246

1230-130

Looking for a Pump Hoist?

See our ad on page 13.

Specialty Rig Sales

888-909-9066

1230-505

Great ! Enjoy the mag !
 Alot of articles hit home . Thanks !!

Pumps
1240

ROBBCO PUMPS INC

Manufacturer of
 Submersible &
 Lineshaft Pumps

806-749-7475
 robbcopumps.com
 Idalou, Texas USA

1240-1112

Rig Parts
1320

5 1/4, 7 1/2, 8 1/2, 12, 17 1/2 Rotary Table,
 Hyd. Tubing Tongs, Air Slips,
 Type LF & C Tongs, Elevators
 RENE HENDON 281-260-0880

1320-120

Rig Repair / Parts
1321



RIG PARTS & REPAIRS by WATER WELL professionals!

Rotary Tables • Mud Pumps Major Components

Parts located, spares provided for existing equipment, 18" rotary tables now produced with large ring gear and pinion.

580-234-5971 www.eniddrill.com

1321-510

Rig Service / Parts
1325

The Rx9 Doctor's 317-839-7534

Complete Rebuilding and Repair of Drill Unit Components.

31' - 6" long CF-15/1250 Failing mast, excellent condition.

Failing high-torque PTO, model G250-HT.

Both priced to sell!

Call or fax for listing.

PH: 317-839-7534 FAX: 317-838-9244

1325-117

Rigs
1330



2008 Gus Pech GP900XHR, with 8820 rig hrs. mtd. on a 2008 Freightliner with 43,025 mi., 40,000 lb pullback, 9000 ft lb torque, 7 1/2 Centerline duplex, tilt out topdrive, well maintained...**\$155,000 USD**
Contact 403-333-2720

1330-729

C
A
L
L
8
5
0
-
5
4
7
-
0
1
0
2

C
A
L
L
8
5
0
-
5
4
7
-
0
1
0
2

Rigs
1330

2007 Schramm 130, SN J1300186, with rod launcher, many extras.....**\$800,000**
2004 Schramm 130, SN J1300018, 4843 hours, 8000 miles, non-tilt head, model 1350/350 - 1150/500 Sullair.....**\$450,000**
2006 Atlas Copco RD20, SN 21053, 6000 hours.....**\$700,000**
Call Alan Lang: 801-554-2419
 1330-1027



2001 GEFCO 15K drill rig, Peterbilt 357 chassis, holdback cap. up to 15,000 lbs.
Call for price: 215-348-2974

1330-1250

EWMD
EAST WEST
 MACHINERY & DRILLING, INC.
 "Meeting Drillers Needs"
www.ewdrilling.com
 Email: sales@ewdrilling.com
 Ph (570)966-7312(PA yard/office)



We Buy & Sell Drill Rigs&Equip
 Water Well, Oil & Gas, Auger, Core, Blasthole & Mining, Exploration Drills. Air Compressor, Mud Pumps, Parts, Engines, Drill Pipe, Hammers & Bits



All Makes & Models Available
 IR / Atlas Copco, CAT, Cummins, MTU Schramm, Driteltech, REICHdrill / CP, GD, Speedstar, Simco, Mobile, CME

1330-124



Aqua Bore G2 Pro Series

Compact, portable, powerful, full-featured, economical skid mount or trailer rig!
 • 300 to 400+ ft. boreholes
 • Commercial duty
 • MCM true oilfield mud pump for 120 psi at up to 240 gpm
 HD tandem axle mount starts under **\$26,000** with 148 ft. of drill stem.
 Xtreme Duty unit pictured with options and 160 ft. of drill stem starts at **\$32,000**. Diesel and many other options available upon request.
Phone: 906-458-4983 or 906-884-2170
E-mail: webberconst@hotmail.com
Web: webberfabrication.com

1330-1226



Drilling Rig Package

Mayhew 1000 with 600' 2-7/8
SEMCO 6000 pump hoist on Ford F-650
2004 Freightliner with 2000 gal water tank Package.....**\$106,000 OBO**, will sell separate.
Call or text 903-714-1256 for more info.

1330-1219

1986 Gus Pech Brat 22R, on 86 Int'l diesel, 3X4 mud, full restoration with all new hydrostats/pumps and hoses, new drill pipe, pulldown cylinder and cable-rebuilt pto/splitter, new radial tires, professionally done - won't disappoint. Rig and truck in excellent condition...**\$88,500 OBO**
Call 816 575-2272 or 816 724-1039

1330-1127

Award-Winning Patented Technology

SONIC
 SONIC DRILL CORPORATION
 Suite 190#120, 119 N. Commercial St.
 Bellingham, WA 98225
 1-604-588-6081
www.sonic-drill.com

1330-301

2003 Deeprock DR150, low hours, mtd. on 2003 Ford F-750 4x4 w/Cummins 5.9 diesel, 5x6 mud pump, winch, Bean pump, air oiler, (4) jacks, rebuilt sliding tophead (0 hrs), very good shape, ready to work...**\$75,000**

Call Chris 516-536-7375 or e-mail cmurray52@gmail.com

1330-725



800-963-2466

QUALITY NEW & PRE-OWNED RIGS

2005 REICHdrill T-690-W

Sullair 1070/375 airpack, Cat® C15 on deck, mounted on 2005 Mack CV713 Granite.

2005 REICHdrill T-690-W

Cat® C15 deck engine, Sullair 1070/375 airpack, mounted on 2005 Mack CV713 Granite.

2004 REICHdrill T-690-W

Sullair 1070/375 airpack, Cat® C15 on deck, mounted on 2004 Mack CV713 Granite, 55,000lb hoist.

2001 REICHdrill T-690-W

Cummins QSK 19c diesel deck engine, Sullair 900/350 airpack, mounted on 2000 Mack DM690S.

2000 REICHdrill T-690-W

Cat® C3406 deck engine, Sullair 900/350 airpack, mounted on 2000 Freightliner FLD-112SD.

"ONLY Authorized REICHdrill® sales, service, and parts dealer in New England."



We stock REICHdrill® and CP Parts. New REICHdrill® style 4½" and 4" Drill Rod in Stock.



Fan Pumps • Head Motors • Main Pumps
 Hoist Pumps • Control Valves

We Ship Worldwide

NH: 603-878-0998
VT: 802-235-2466

www.northeastdrill.com

1330-204

Foremost / Barber DR-24, dual rotary, Sullair 1150/350, 600 hp deck engine, truck mtd., good condition.....**\$398,000**
208-771-0770 Scott

1330-1211

C
A
L
L
8
5
0
-
5
4
7
-
0
1
0
2

C
A
L
L
8
5
0
-
5
4
7
-
0
1
0
2

Rigs
1330



1992 CME 75, mounted on a 1993 tandem-axle International 4400, equipped with a Cummins 6 cyl. diesel engine, 25' tower, 3L8 Moyno pump, (3) winches 8500lb, 3200lb, and wireline, high-torque rotary box, 140lb auto hammer, wiggle tail, breakout table, angle drilling capable, 500 gallon water tank, large look-thru storage compartment.....**\$150,000**
Larry 740-331-0601

1330-695

geoprobe.com/used

Do you have an underutilized rig to move?
Looking at Used rather than New?
Do you have a specific need at a specific price?

If Your Equipment Puts Holes in the Ground ... We'll Help You Sell It.

Currently Available:

2 - Geoprobe® 6620DTs

1 - Geoprobe® 8140LS Sonic



Call 785-825-1842 with Questions.

geoprobe.com/used

1330-636

WANTED TO BUY

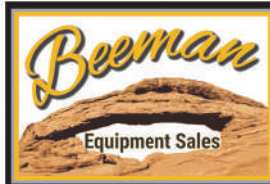
ATLAS COPCO/INGERSOLL-RAND DRILL DM30E, DM45E, DML, T3W, T4W, T5W, RD20 DRILTECH DRILL T25K, D40K, T40K, DH1, DH2 SCHRAMM T685 RC DRILL WITH RC PIPES WE WANT SURPLUS PIPES, SPARE PARTS
TEL: 818-956-5231 FAX: 818-244-3723
www.pacificcranes.com

1330-995

RV6 Portadrill Semi-trailer rig, mtd. on 2000 Sterling truck, 450' of 6" drill pipe, 750 cfm compressor, bits.....**\$200,000**
501 Portadrill, mtd. on 1998 F-600 truck, 600 ft. drill pipe, bits, tools.....**\$60,000**
2000 Ford F-750 water truck, 1250 gal w/pipe rack.....**\$25,000**
21W Bucyrus Erie cable tool with tools.....**\$7,000**

Dave Smith 620-384-6041

1330-640



435-259-7281

Moab, UT

BeemanEquipmentSales.com



2009 GEFCO SS 40T \$725K

P/B CAT C9 Acert, 60' Mast x 176K Lbs. Cap, HD Triple Drum Drwks, 18" Rotary Table, Trlr Mntd



2001 GEFCO SS 40K \$285K

Hydraulic Top Drive, P/B CAT C-15 (550 HP), 40,000 Lbs. Cap, 1000/350 A/C



American Augers MCM2000 \$58K

2000 Gall Cap, 2 Cent Pumps, 4x6 Linear Shaker, Desand/Desilt Cones, Mud Hopper, 40 kW Gen



2004 Pulstar P10,000 \$58K

P/b 6.6 L Duramax w/ PTO, 37' Mast x 15,000 Lb, Max Pull Cap, Mntd on 2004 GMC C4500 S/A Trk

1330-647



1985 Ingersoll-Rand Model #RD-10-VH-1050, SN:14088, rotary drilling. No mud or air, plumbed for mud and air, Range II, 53' mast, 85,000 pullback, high-torque tophead, (5) hyd. leveling jacks, hyd. winch jib boom. Mtd. on and powered by 1985 Pettibone, 4-axle crane carrier, 1984 Cummins NTC 400 BC3...**\$130,000 Negotiable**
Fred Miller 503-510-4066

1330-423

Mayhew 500, mtd. on Ardco Buggy, runs great.....**Price Reduced**
1976 GMC 6500, mtd. on Failing 1500.....**Price Reduced**
409-789-4590

1330-563

SpeedStar 1500 drawworks...\$14,000
30K Shock Sub.....\$2000



5x6 GD w/3cyl. Detroit Power, 4-spd. trans.....\$15,500



1978 TKT Portadrill.....\$135,000
970-779-8921

1330-287



2013 SIMCO 2800, 2013 Ford F-550 truck, 10' stroke, 7½x10 piston mud pump, (2) winches, tophead drive 4000 ft lbs/200 rpm, turbo diesel deck engine.
800-338-9925 • www.simcodrill.com

1330-497

CALL 850-547-0102

CALL 850-547-0102

Rigs
1330

1985 Driltech D25K with 850/350 air, Gardner Denver 5x6 mud pump, Wilden grout pump; **BE 22** with 3 hydraulic jacks mtd. on 1986 GMC truck; **BE 20W 1985 Ford F-600** with manual screwed on jacks; **Mobile Drill B50** auger machine; **1986 Ford F-500**. Call 715-498-7427 1330-542

Thanks for your service to the industry.

Betty
Brandon, Mississippi

Stolen
1445

STOLEN DRILL RIG!!

STOLEN

STOLEN



1990 SpeedStar SS25K drilling rig, tophead drive, mtd. on 1990 Int'l VT100 w/Cummins 400, 10-spd. trans. TRUCK VIN #44KHM6488LWZ17237
If anyone has any information please call: 818-956-5231 or visit: www.pacificcranes.com
You may also contact: Crime Prevention Program @ 800-432-7257 ext. 823

1445-995

CALL 850-547-0102

CALL 850-547-0102

2015 SIMCO 2800

1-800-338-9925

7-1/2 x 10 Centerline Piston Pump
Ram 5500 Truck
Turbo Diesel Deck Engine
Tophead Drillhead 4,000 ft. lbs. / 200 rpm
2 winches
In/Out Slide Base
10' Stroke Mast

NEW WARRANTY

NEW PRICE

1330-497

2007 CME 55 Track w/auto hammer. Also 2003 CME 550 ATV & 2003 CME 55LC Track (low clearance), both setup for coring w/auto hammer. **404-394-9469** excaliburdrilling@msn.com

1330-551



Totally rebuilt **IR TH100A** drill rig, mtd. on a pre-emission 2005 International tri-drive, Cummins ISX 565 hp engine, 18-speed transmission, approx. 171,000 miles (275,000km). Angle package 46' derrick, 20-rod carousel for 4 1/2" pipe. IR HR2 1250/350 compressor, 18,000 lb Braden main winch, 12,000 lb aux. Braden winch, 25 gpm Bean water injection pump, 7-gallon DHD lubricator. All new sheaves (18" crown sheaves), rebuilt cylinders, new wire rope, all updated hydraulic system. Rig inspected and certified.....**\$495,000**

Darrel Skinner (403) 809-2700
Monument Machine Shop Ltd.
Calgary, AB, Canada

1330-1082

This would be a great spot for your ad!
Call 850-547-0102
worldwidedrillingresource.com

Trucks
1540

2012 Freightliner Trucks 6X6, 60 Series Detroit, New World Trans., Rockwell Axle, 68KGWV, 315/80 R22.5 Michelin, 800 Miles.....**\$69,500**
SEMCO, Inc. 800-541-1562

1540-135

2009 Schramm T450W

1995 Ingersoll Rand T3W

SOLD

Atlas Copco T4-60, 70K lbs

2003 Schramm T555WS Rotary Drill

2003 GEFCO Failing 1250

Thank you! We love the magazine. Please keep sending it our way!



Delivered

Screens
1408



11 Black Forest Road, Hamilton, NJ 08691
609-631-8939 ~ 888-240-4328 (Toll-Free)
ectmfg@aol.com ~ ectmfg.com
proactivepumps.com ~ torquerplug.com

1408-719

Wanted
1705

QUICK CASH MONEY
Paid for Drill Rigs, Pump Hoists, Mud Pumps, Drill Pipe, & Bits.
RENE HENDON Tel: 281-260-0880

1705-120

Water Level Indicators
1710

Reliable Water Level Indicators proudly made in the USA. Various lengths & scales available, selectable buzzer/light indication & sensitivity control. Economical repair service.

Waterline Envirotech Ltd.

www.waterlineusa.com

360-676-9635

1710-188

GEFCO

Contact Chip Nelson for more information and pricing
#405-880-3647

Hablamos Español, Juan Alfonso
#580-977-3272

1330-654

Water Level Indicators
1710

CONTROL EVERYTHING 

CHEMICAL FEED PUMP CONTROL
Activates chemical feed pump with water flow.
Includes switched and always-on receptacles.
Available for most pipe sizes.



Tested - Proven - Best

WIRELESS CONTROL
Wireless Bridge between switch and device - Range 1000 feet.
Eliminates cost of wire, installation and maintenance.
Ideal for rainwater capture, tank level control or pump control.



HARWIL.COM
(805) 988-6800 sales@harwil.com

1710-1179

Water Trucks
1730

2003 Sterling/1700 gallon Flatwater Fleet, one owner garage kept, 60,000 miles, Cat® C12, 420 hp, 8LL, 4.56 rears, 5000# crane, grouter, water transfer pump, 230 fuel tank, with hose reel and air pump, exc. **304-822-4786**

1730-216



2007 Kenworth T-800, ISX Cummins engine and 10-speed transmission, new 2017 service body w/2500 gallons of water and 200 gallons of fuel... **\$49,500**

Several more trucks in stock.

Gordon Ballard
Ballard Drilling Co., Inc.
Wadley, Alabama
256-825-5871

Cell: 256-307-4017 (anytime)
E-mail: gballard501@msn.com

1730-785

NORTHWEST FLATTANKS

Building and gaining trust by manufacturing quality flattanks, serving the water well, mining, mineral explorations, geothermal, directional boring, and sonic drilling industries.

We offer your company the satisfaction of a job well done. Check out our web site for more information on our products.
www.northwestflattanks.com

Call (406) 466-2146 or
(406) 544-5914



2005 International, ISX Cummins engine, 475-500 hp / 1850 torque, 18-speed, 9789.7 original miles, 20,000 front 69,000 rear, full lockers, all new rear virgin tires, new Flattank 2600 gallon 23' long with a brand new 7500 IMT wireless radio remote crane.



2007 Peterbilt, Model 378-550 hp C15, 257,150 miles, 18-speed, engine brake, ratio 4.10, wheels aluminum, 20,000 front 46,000 rear, new Flattank 2100 gallon 21' long with a brand new 7500 IMT wireless radio remote crane.



2007 Kenworth T800, new 2100 gallon Flattank.

Lots of information, pictures, and specs on our web site. We also have used drilling rigs, pump hoists, and used flattank support trucks.

www.northwestflattanks.com

1730-665

Rose-Wall Mfg. Inc.



Rose-Wall puts a new "tilt" on the water tank business!



We can build any shape or size
Please call for a custom quote

1-800-321-1541

rose-wall.com

1730-390

Well Plugs
1753

TORQUER™
Professional
Locking Well Plugs

Sched. 40/80

1/2", 3/4"

1", 1 1/4"

1 1/2", 2"

2 1/2", 3"

4", 5", 6"

coming soon: 8"

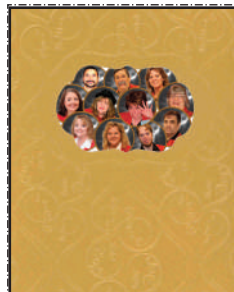


- Domed top
- No metal parts
- Padlocks or safety lock out tags
- Most sq. inch of gasket power
- Bright safety orange color
- Vapor extraction convertible
- Vented Plug Option
- Low Cost

U.S. Patent Protected

www.torquerplugs.com

1753-244



Keep your eye out for the 2018 Marketing Guide!
Exciting deals and opportunities for any budget.

Our Public Relations Professionals are ready to create a customized marketing plan for your business.

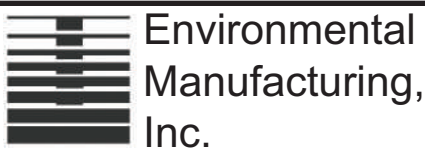
Just give us a call at 850-547-0102 or visit

worldwidedrillingresource.com

CALL 850-547-0102

CALL 850-547-0102

Well Screens
1760



Environmental
Manufacturing,
Inc.

8887 Green Valley Drive
Manhattan, KS 66502

*Flush Thread Pipe,
Fittings, and Supplies for
Monitoring/Remediation.
Custom Slotting & Perforating
PVC CPVC HDPE*

Toll Free 888-587-0807
Fax 785-539-1349
www.emipipe.com



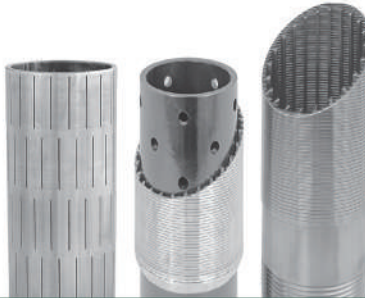
1760-156

Stainless Steel • Carbon Steel
Galvanized Steel • Wedge-Wire

Well Screens & Slotted Pipe

18102 East Hardy Road
Houston, Texas 77073 USA
Phone: 281.233.0214
Fax: 281.233.0487
Toll-free: 800.577.5068
info@alloyscreenworks.com
www.alloyscreenworks.com

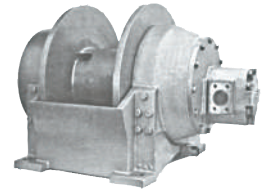
ALLOY SCREEN WORKS
▲▲▲ A division of Alloy Machine Works, Inc.



1760-378

Winches
1775

The Source of Force



Linepull: 1/2 Ton to 100 Ton plus!
In-Stock Now!



(800) Mr. Winch
Fax: (619) 474-6730
www.ryanhyd.com



RYAN Hydraulic Service, inc.
The People with Pull

1775-136

Have something to sell???

Fill out this form or E-mail to: kathy@worldwidedrillingresource.com

WorldWide Drilling Resource®

Classified Ad Form

Phone: 1-850-547-0102 • Fax: 1-850-547-0329
E-mail: kathy@worldwidedrillingresource.com

The only drilling magazine reaching the most of your potential buyers ~ place your classified ad with *WDDR*. Visit our Web site worldwidedrillingresource.com, e-mail us at classified@worldwidedrillingresource.com, call 850-547-0102 for more information, or fill out the form below. Fax: 850-547-0329 or mail to: PO Box 660 Bonifay, Florida 32425-0660. **Form Instructions:** Please TYPE or PRINT your ad exactly as you would like it to appear (include all punctuation marks). The rate is \$9.00 per line; normally 32 characters makes one line. **Note:** Bold type is considered 2 spaces. Multiply rate x # of lines to find your total charge. Deadline is the 1st of each month.

Ad Text: _____

Special Instructions: _____

Company Name: _____

Contact Name: _____

Address: _____

City, State, Zip: _____

Phone # _____

Fax # _____

Card # _____

Name on Card _____

Exp Date: _____ CCV # _____

We accept:



Minimum Charge is \$36.00 - Call For Display Classified Rates

CALL 850-547-0102

CALL 850-547-0102