

# Patriot Properties, LLC

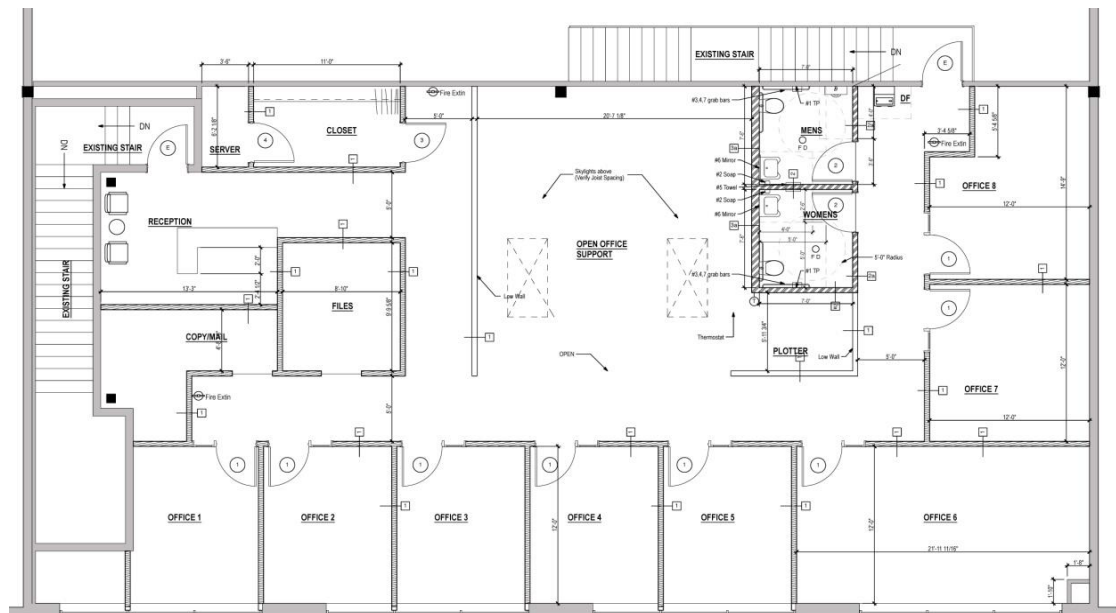
3931 Avion Park Court, Suite C108-2<sup>nd</sup> Floor, Chantilly, VA 20151

## Office Space Features:

- \$20 - \$21 /SF/YR
- 2,800 sq. ft.
- Fully Furnished
- Executive Office
- 7 Private Offices
- 24/7 monitoring of the building and key card access for after hour access
- Open Concept working and meeting area
- Skylights
- In-suite bathrooms
- Kitchenette
- Server, storage and copier rooms
- Gorgeous lobby area
- Sensor controlled lighting in all the offices
- Easy access to Dulles Airport, Route 28, Route 50 and Route 66



Office Floor Plan



**For more information please contact**

Genele Hammonds **703-382-3352**

[ghammonds@reillyconstruction.com](mailto:ghammonds@reillyconstruction.com)

[www.patriotprops.com](http://www.patriotprops.com)

# Patriot Properties, LLC

## PROPERTY SUMMARY

### Available For Lease

Address:	3931 Avion Park Court, Suite C108-2 <sup>nd</sup> Floor Chantilly, VA 20151
Location:	Avion Business Condominium within Avion Business Park
About Location:	Avion Business Park is strategically located in Northern Virginia's dynamic Route 28 South submarket, just four miles from Dulles International Airport, convenient access to Route 28, Route 50 and Route 66.
Available Space:	2,800 sq. ft. fully built out space includes furnished offices and 24/7 building security monitoring.
Lease Rate:	\$20 - \$21 /SF/YR
Availability:	Office available for immediate occupancy.

Executive Office



Private Office

