

CERTIFICATE OF OWNERSHIP, DECLARATIONS, RESERVATIONS AND DEDICATIONS

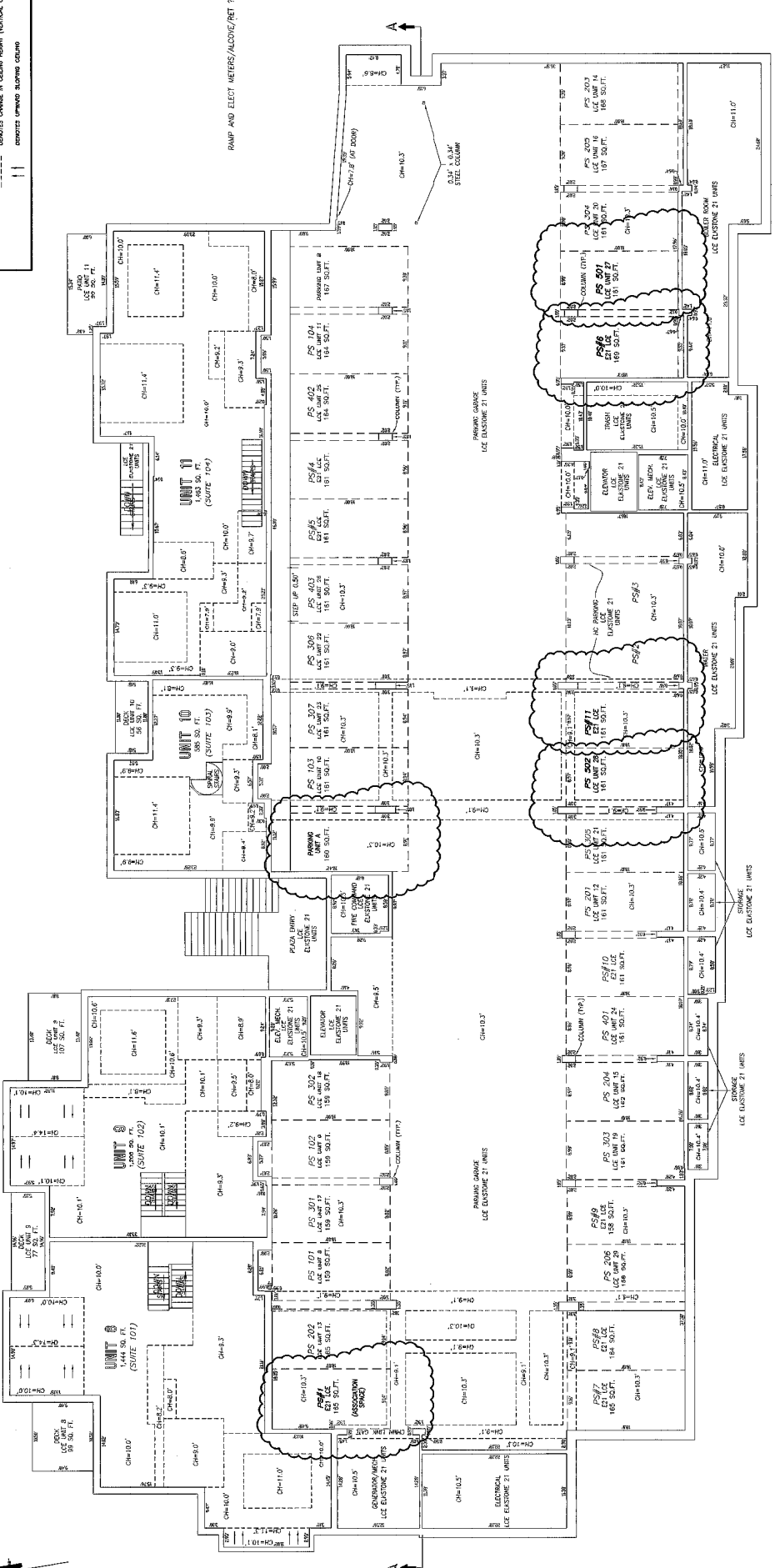
The President of Elkstone Owners Association, Inc., a Colorado nonprofit corporation (the "Association"), for itself and as the entity charged with management, operation and maintenance of the Common Elements of the Elkstone Community, as Vice President of Elkstone Owners Association, Inc., a Colorado nonprofit corporation (the "Association"), do hereby certify as follows:

1. The real property affected by this Third Amended Map (the "Third Amended Map") is legally described, as follows:

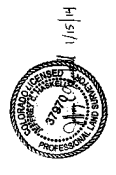
The 29 Units and associated easement-in-common ownership interests in the Common Elements for Elkstone, a Common Interest Community (the "Community"), all according to the (i) Declaration of Covenants, Conditions and Restrictions, recorded in the records of the Clerk and Recorder of San Miguel County, Colorado (the "Official Records"), May 16, 2003 under Registration No. 357307, as supplemented by the Third Supplement to the Declaration of Covenants, Conditions and Restrictions, recorded in the Official Records, December 13, 2006 at Reception No. 368969; Third Supplement recorded July 27, 2007 at Reception No. 365332; Supplement recorded October 4, 2011 at Reception No. 419928 and as amended by the Declaration of Covenants, Conditions and Restrictions, recorded in the Official Records, December 13, 2006 (the "Declaration"); and (ii) the Condominium Map recorded May 16, 2003 in Plat Book 1, at page 3128, recorded in the Official Records, December 13, 2006 (the "Condominium Map"); and (iii) the Elkstone Common Interest Community Map, recorded July 11, 2003 in Plat Book 1 at page 2494, under Reception No. 370279, as supplemented by the Elkstone Common Interest Community Map, recorded July 11, 2003 in Plat Book 1 at page 2494, under Reception No. 370279, as supplemented by the Elkstone Common Interest Community Map, recorded July 27, 2007 in Plat Book 1 at page 4332 under Reception No. 365332; and (iv) the Elkstone Common Interest Community Map, recorded June 23, 2011 in Plat Book 1 at page 4479 under Reception No. 412711 and as amended by the First Amended Map recorded February 14, 2012 in Plat Book 1 at page 4327 under Reception No. 427658 (collectively, the "Map"), all affecting Lot 6004, Tallridge Mountain Village, according to the Plat recorded December 9, 1993 in Plat Book 1 at page 1600; TOGETHER WITH the benefits set forth in Sections 3.1, 3.2, 3.3, 3.4, 3.5, 3.6, 3.7, 3.8, 3.9, 3.10, 3.11, 3.12, 3.13, 3.14, 3.15, 3.16, 3.17, 3.18, 3.19, 3.20, 3.21, 3.22, 3.23, 3.24, 3.25, 3.26, 3.27, 3.28, 3.29, 3.30, 3.31, 3.32, 3.33, 3.34, 3.35, 3.36, 3.37, 3.38, 3.39, 3.40, 3.41, 3.42, 3.43, 3.44, 3.45, 3.46, 3.47, 3.48, 3.49, 3.50, 3.51, 3.52, 3.53, 3.54, 3.55, 3.56, 3.57, 3.58, 3.59, 3.60, 3.61, 3.62, 3.63, 3.64, 3.65, 3.66, 3.67, 3.68, 3.69, 3.70, 3.71, 3.72, 3.73, 3.74, 3.75, 3.76, 3.77, 3.78, 3.79, 3.80, 3.81, 3.82, 3.83, 3.84, 3.85, 3.86, 3.87, 3.88, 3.89, 3.90, 3.91, 3.92, 3.93, 3.94, 3.95, 3.96, 3.97, 3.98, 3.99, 3.100, 3.101, 3.102, 3.103, 3.104, 3.105, 3.106, 3.107, 3.108, 3.109, 3.110, 3.111, 3.112, 3.113, 3.114, 3.115, 3.116, 3.117, 3.118, 3.119, 3.120, 3.121, 3.122, 3.123, 3.124, 3.125, 3.126, 3.127, 3.128, 3.129, 3.130, 3.131, 3.132, 3.133, 3.134, 3.135, 3.136, 3.137, 3.138, 3.139, 3.140, 3.141, 3.142, 3.143, 3.144, 3.145, 3.146, 3.147, 3.148, 3.149, 3.150, 3.151, 3.152, 3.153, 3.154, 3.155, 3.156, 3.157, 3.158, 3.159, 3.160, 3.161, 3.162, 3.163, 3.164, 3.165, 3.166, 3.167, 3.168, 3.169, 3.170, 3.171, 3.172, 3.173, 3.174, 3.175, 3.176, 3.177, 3.178, 3.179, 3.180, 3.181, 3.182, 3.183, 3.184, 3.185, 3.186, 3.187, 3.188, 3.189, 3.190, 3.191, 3.192, 3.193, 3.194, 3.195, 3.196, 3.197, 3.198, 3.199, 3.200, 3.201, 3.202, 3.203, 3.204, 3.205, 3.206, 3.207, 3.208, 3.209, 3.210, 3.211, 3.212, 3.213, 3.214, 3.215, 3.216, 3.217, 3.218, 3.219, 3.220, 3.221, 3.222, 3.223, 3.224, 3.225, 3.226, 3.227, 3.228, 3.229, 3.230, 3.231, 3.232, 3.233, 3.234, 3.235, 3.236, 3.237, 3.238, 3.239, 3.240, 3.241, 3.242, 3.243, 3.244, 3.245, 3.246, 3.247, 3.248, 3.249, 3.250, 3.251, 3.252, 3.253, 3.254, 3.255, 3.256, 3.257, 3.258, 3.259, 3.260, 3.261, 3.262, 3.263, 3.264, 3.265, 3.266, 3.267, 3.268, 3.269, 3.270, 3.271, 3.272, 3.273, 3.274, 3.275, 3.276, 3.277, 3.278, 3.279, 3.280, 3.281, 3.282, 3.283, 3.284, 3.285, 3.286, 3.287, 3.288, 3.289, 3.290, 3.291, 3.292, 3.293, 3.294, 3.295, 3.296, 3.297, 3.298, 3.299, 3.300, 3.301, 3.302, 3.303, 3.304, 3.305, 3.306, 3.307, 3.308, 3.309, 3.310, 3.311, 3.312, 3.313, 3.314, 3.315, 3.316, 3.317, 3.318, 3.319, 3.320, 3.321, 3.322, 3.323, 3.324, 3.325, 3.326, 3.327, 3.328, 3.329, 3.330, 3.331, 3.332, 3.333, 3.334, 3.335, 3.336, 3.337, 3.338, 3.339, 3.340, 3.341, 3.342, 3.343, 3.344, 3.345, 3.346, 3.347, 3.348, 3.349, 3.350, 3.351, 3.352, 3.353, 3.354, 3.355, 3.356, 3.357, 3.358, 3.359, 3.360, 3.361, 3.362, 3.363, 3.364, 3.365, 3.366, 3.367, 3.368, 3.369, 3.370, 3.371, 3.372, 3.373, 3.374, 3.375, 3.376, 3.377, 3.378, 3.379, 3.380, 3.381, 3.382, 3.383, 3.384, 3.385, 3.386, 3.387, 3.388, 3.389, 3.390, 3.391, 3.392, 3.393, 3.394, 3.395, 3.396, 3.397, 3.398, 3.399, 3.400, 3.401, 3.402, 3.403, 3.404, 3.405, 3.406, 3.407, 3.408, 3.409, 3.410, 3.411, 3.412, 3.413, 3.414, 3.415, 3.416, 3.417, 3.418, 3.419, 3.420, 3.421, 3.422, 3.423, 3.424, 3.425, 3.426, 3.427, 3.428, 3.429, 3.430, 3.431, 3.432, 3.433, 3.434, 3.435, 3.436, 3.437, 3.438, 3.439, 3.440, 3.441, 3.442, 3.443, 3.444, 3.445, 3.446, 3.447, 3.448, 3.449, 3.450, 3.451, 3.452, 3.453, 3.454, 3.455, 3.456, 3.457, 3.458, 3.459, 3.460, 3.461, 3.462, 3.463, 3.464, 3.465, 3.466, 3.467, 3.468, 3.469, 3.470, 3.471, 3.472, 3.473, 3.474, 3.475, 3.476, 3.477, 3.478, 3.479, 3.480, 3.481, 3.482, 3.483, 3.484, 3.485, 3.486, 3.487, 3.488, 3.489, 3.490, 3.491, 3.492, 3.493, 3.494, 3.495, 3.496, 3.497, 3.498, 3.499, 3.500, 3.501, 3.502, 3.503, 3.504, 3.505, 3.506, 3.507, 3.508, 3.509, 3.510, 3.511, 3.512, 3.513, 3.514, 3.515, 3.516, 3.517, 3.518, 3.519, 3.520, 3.521, 3.522, 3.523, 3.524, 3.525, 3.526, 3.527, 3.528, 3.529, 3.530, 3.531, 3.532, 3.533, 3.534, 3.535, 3.536, 3.537, 3.538, 3.539, 3.540, 3.541, 3.542, 3.543, 3.544, 3.545, 3.546, 3.547, 3.548, 3.549, 3.550, 3.551, 3.552, 3.553, 3.554, 3.555, 3.556, 3.557, 3.558, 3.559, 3.560, 3.561, 3.562, 3.563, 3.564, 3.565, 3.566, 3.567, 3.568, 3.569, 3.570, 3.571, 3.572, 3.573, 3.574, 3.575, 3.576, 3.577, 3.578, 3.579, 3.580, 3.581, 3.582, 3.583, 3.584, 3.585, 3.586, 3.587, 3.588, 3.589, 3.590, 3.591, 3.592, 3.593, 3.594, 3.595, 3.596, 3.597, 3.598, 3.599, 3.600, 3.601, 3.602, 3.603, 3.604, 3.605, 3.606, 3.607, 3.608, 3.609, 3.610, 3.611, 3.612, 3.613, 3.614, 3.615, 3.616, 3.617, 3.618, 3.619, 3.620, 3.621, 3.622, 3.623, 3.624, 3.625, 3.626, 3.627, 3.628, 3.629, 3.630, 3.631, 3.632, 3.633, 3.634, 3.635, 3.636, 3.637, 3.638, 3.639, 3.640, 3.641, 3.642, 3.643, 3.644, 3.645, 3.646, 3.647, 3.648, 3.649, 3.650, 3.651, 3.652, 3.653, 3.654, 3.655, 3.656, 3.657, 3.658, 3.659, 3.660, 3.661, 3.662, 3.663, 3.664, 3.665, 3.666, 3.667, 3.668, 3.669, 3.670, 3.671, 3.672, 3.673, 3.674, 3.675, 3.676, 3.677, 3.678, 3.679, 3.680, 3.681, 3.682, 3.683, 3.684, 3.685, 3.686, 3.687, 3.688, 3.689, 3.690, 3.691, 3.692, 3.693, 3.694, 3.695, 3.696, 3.697, 3.698, 3.699, 3.700, 3.701, 3.702, 3.703, 3.704, 3.705, 3.706, 3.707, 3.708, 3.709, 3.710, 3.711, 3.712, 3.713, 3.714, 3.715, 3.716, 3.717, 3.718, 3.719, 3.720, 3.721, 3.722, 3.723, 3.724, 3.725, 3.726, 3.727, 3.728, 3.729, 3.730, 3.731, 3.732, 3.733, 3.734, 3.735, 3.736, 3.737, 3.738, 3.739, 3.740, 3.741, 3.742, 3.743, 3.744, 3.745, 3.746, 3.747, 3.748, 3.749, 3.750, 3.751, 3.752, 3.753, 3.754, 3.755, 3.756, 3.757, 3.758, 3.759, 3.760, 3.761, 3.762, 3.763, 3.764, 3.765, 3.766, 3.767, 3.768, 3.769, 3.770, 3.771, 3.772, 3.773, 3.774, 3.775, 3.776, 3.777, 3.778, 3.779, 3.780, 3.781, 3.782, 3.783, 3.784, 3.785, 3.786, 3.787, 3.788, 3.789, 3.790, 3.791, 3.792, 3.793, 3.794, 3.795, 3.796, 3.797, 3.798, 3.799, 3.800, 3.801, 3.802, 3.803, 3.804, 3.805, 3.806, 3.807, 3.808, 3.809, 3.810, 3.811, 3.812, 3.813, 3.814, 3.815, 3.816, 3.817, 3.818, 3.819, 3.820, 3.821, 3.822, 3.823, 3.824, 3.825, 3.826, 3.827, 3.828, 3.829, 3.830, 3.831, 3.832, 3.833, 3.834, 3.835, 3.836, 3.837, 3.838, 3.839, 3.840, 3.841, 3.842, 3.843, 3.844, 3.845, 3.846, 3.847, 3.848, 3.849, 3.850, 3.851, 3.852, 3.853, 3.854, 3.855, 3.856, 3.857, 3.858, 3.859, 3.860, 3.861, 3.862, 3.863, 3.864, 3.865, 3.866, 3.867, 3.868, 3.869, 3.870, 3.871, 3.872, 3.873, 3.874, 3.875, 3.876, 3.877, 3.878, 3.879, 3.880, 3.881, 3.882, 3.883, 3.884, 3.885, 3.886, 3.887, 3.888, 3.889, 3.890, 3.891, 3.892, 3.893, 3.894, 3.895, 3.896, 3.897, 3.898, 3.899, 3.900, 3.901, 3.902, 3.903, 3.904, 3.905, 3.906, 3.907, 3.908, 3.909, 3.910, 3.911, 3.912, 3.913, 3.914, 3.915, 3.916, 3.917, 3.918, 3.919, 3.920, 3.921, 3.922, 3.923, 3.924, 3.925, 3.926, 3.927, 3.928, 3.929, 3.930, 3.931, 3.932, 3.933, 3.934, 3.935, 3.936, 3.937, 3.938, 3.939, 3.940, 3.941, 3.942, 3.943, 3.944, 3.945, 3.946, 3.947, 3.948, 3.949, 3.950, 3.951, 3.952, 3.953, 3.954, 3.955, 3.956, 3.957, 3.958, 3.959, 3.960, 3.961, 3.962, 3.963, 3.964, 3.965, 3.966, 3.967, 3.968, 3.969, 3.970, 3.971, 3.972, 3.973, 3.974, 3.975, 3.976, 3.977, 3.978, 3.979, 3.980, 3.981, 3.982, 3.983, 3.984, 3.985, 3.986, 3.987, 3.988, 3.989, 3.990, 3.991, 3.992, 3.993, 3.994, 3.995, 3.996, 3.997, 3.998, 3.999, 4.000, 4.001, 4.002, 4.003, 4.004, 4.005, 4.006, 4.007, 4.008, 4.009, 4.010, 4.011, 4.012, 4.013, 4.014, 4.015, 4.016, 4.017, 4.018, 4.019, 4.020, 4.021, 4.022, 4.023, 4.024, 4.025, 4.026, 4.027, 4.028, 4.029, 4.030, 4.031, 4.032, 4.033, 4.034, 4.035, 4.036, 4.037, 4.038, 4.039, 4.040, 4.041, 4.042, 4.043, 4.044, 4.045, 4.046, 4.047, 4.048, 4.049, 4.050, 4.051, 4.052, 4.053, 4.054, 4.055, 4.056, 4.057, 4.058, 4.059, 4.060, 4.061, 4.062, 4.063, 4.064, 4.065, 4.066, 4.067, 4.068, 4.069, 4.070, 4.071, 4.072, 4.073, 4.074, 4.075, 4.076, 4.077, 4.078, 4.079, 4.080, 4.081, 4.082, 4.083, 4.084, 4.085, 4.086, 4.087, 4.088, 4.089, 4.090, 4.091, 4.092, 4.093, 4.094, 4.095, 4.096, 4.097, 4.098, 4.099, 4.100, 4.101, 4.102, 4.103, 4.104, 4.105, 4.106, 4.107, 4.108, 4.109, 4.110, 4.111, 4.112, 4.113, 4.114, 4.115, 4.116, 4.117, 4.118, 4.119, 4.120, 4.121, 4.122, 4.123, 4.124, 4.125, 4.126, 4.127, 4.128, 4.129, 4.130, 4.131, 4.132, 4.133, 4.134, 4.135, 4.136, 4.137, 4.138, 4.139, 4.140, 4.141, 4.142, 4.143, 4.144, 4.145, 4.146, 4.147, 4.148, 4.149, 4.150, 4.151, 4.152, 4.153, 4.154, 4.155, 4.156, 4.157, 4.158, 4.159, 4.160, 4.161, 4.162, 4.163, 4.164, 4.165, 4.166, 4.167, 4.168, 4.169, 4.170, 4.171, 4.172, 4.173, 4.174, 4.175, 4.176, 4.177, 4.178, 4.179, 4.180, 4.181, 4.182, 4.183, 4.184, 4.185, 4.186, 4.187, 4.188, 4.189, 4.190, 4.191, 4.192, 4.193, 4.194, 4.195, 4.196, 4.197, 4.198, 4.199, 4.200, 4.201, 4.202, 4.203, 4.204, 4.205, 4.206, 4.207, 4.208, 4.209, 4.210, 4.211, 4.212, 4.213, 4.214, 4.215, 4.216, 4.217, 4.218, 4.219, 4.220, 4.221, 4.222, 4.223, 4.224, 4.225, 4.226, 4.227, 4.228, 4.229, 4.230, 4.231, 4.232, 4.233, 4.234, 4.235, 4.236, 4.237, 4.238, 4.239, 4.240, 4.241, 4.242, 4.243, 4.244, 4.245, 4.246, 4.247, 4.248, 4.249, 4.250, 4.251, 4.252, 4.253, 4.254, 4.255, 4.256, 4.257, 4.258, 4.259, 4.260, 4.261, 4.262, 4.263, 4.264, 4.265, 4.266, 4.267, 4.268, 4.269, 4.270, 4.271, 4.272, 4.273, 4.274, 4.275, 4.276, 4.277, 4.278, 4.279, 4.280, 4.281, 4.282, 4.283, 4.284, 4.285, 4.286, 4.287, 4.288, 4.289, 4.290, 4.291, 4.292, 4.293, 4.294, 4.295, 4.296, 4.297, 4.298, 4.299, 4.300, 4.301, 4.302, 4.303, 4.304, 4.305, 4.306, 4.307, 4.308, 4.309, 4.310, 4.311, 4.312, 4.313, 4.314, 4.315, 4.316, 4.317, 4.318, 4.319, 4.320, 4.321, 4.322, 4.323, 4.324, 4.325, 4.326, 4.327, 4.328, 4.329, 4.330, 4.331, 4.332, 4.333, 4.334, 4.335, 4.336, 4.337, 4.338, 4.339, 4.340, 4.341, 4.342, 4.343, 4.344, 4.345, 4.346, 4.347, 4.348, 4.349, 4.350, 4.351, 4.352, 4.353, 4.354, 4.355, 4.356, 4.357, 4.358, 4.359, 4.360, 4.361, 4.362, 4.363, 4.364, 4.365, 4.366, 4.367, 4.368, 4.369, 4.370, 4.371, 4.372, 4.373, 4.374, 4.375, 4.376, 4.377, 4.378, 4.379, 4.380, 4.381, 4.382, 4.383, 4.384, 4.385, 4.386, 4.387, 4.388, 4.389, 4.390, 4.391, 4.392, 4.393, 4.394, 4.395, 4.396, 4.397, 4.398, 4.399, 4.400, 4.401, 4.402, 4.403, 4.404, 4.405, 4.406, 4.407, 4.408, 4.409, 4.410, 4.411, 4.412, 4.413, 4.414, 4.415, 4.416, 4.417, 4.418, 4.419, 4.420, 4.421, 4.422, 4.423, 4.424, 4.425, 4.426, 4.427, 4.428, 4.429, 4.430, 4.431, 4.432, 4.433, 4.434, 4.435, 4.436, 4.437, 4.438, 4.439, 4.440, 4.441, 4.442, 4.443, 4.444, 4.445, 4.446, 4.447, 4.448, 4.449, 4.450, 4.451, 4.452, 4.453, 4.454, 4.455, 4.456, 4.457, 4.458, 4.459, 4.460, 4.461, 4.462, 4.463, 4.464, 4.465, 4.466, 4.467, 4.468, 4.469, 4.470, 4.471, 4.472, 4.473, 4.474, 4.475, 4.476, 4.477, 4.478, 4.479, 4.480, 4.481, 4.482, 4.483, 4.484, 4.485, 4.486, 4.487, 4.488, 4.489, 4.490, 4.491, 4.492, 4.493, 4.494, 4.495, 4.496, 4.497, 4.498, 4.499, 4.500, 4.501, 4.502, 4.503, 4.504, 4.505, 4.506, 4.507, 4.508, 4.509, 4.510, 4.511, 4.512, 4.513, 4.514, 4.515, 4.516, 4.517, 4.518, 4.519, 4.520, 4.521, 4.522, 4.523, 4.524, 4.525, 4.526, 4.527, 4.528, 4.529, 4.530, 4.531, 4.532, 4.533, 4.534, 4.535, 4.536, 4.537, 4.538, 4.539, 4.540, 4.541, 4.542, 4.543, 4.544, 4.545, 4.546, 4.547, 4.548, 4.549, 4.550, 4.551, 4.552, 4.553, 4.554, 4.555, 4.556, 4.557, 4.558, 4.559, 4.560, 4.561, 4.562, 4.563, 4.564, 4.565, 4.566, 4.567, 4.568, 4.569, 4.570, 4.571, 4.572, 4.573, 4.574, 4.575, 4.576, 4.577, 4.578, 4.579, 4.580, 4.581, 4.582, 4.583, 4.584, 4.585, 4.586, 4.587, 4.588, 4.589, 4.590, 4.591, 4.592, 4.593, 4.594, 4.595, 4.596, 4.597, 4.598, 4.599, 4.600, 4.601, 4.602, 4.603, 4.604, 4.605, 4.606, 4.607, 4.608, 4.609, 4.610, 4.611, 4.612, 4.613, 4.614, 4.615, 4.616, 4.617, 4.618, 4.619, 4.620, 4.621, 4.622, 4.623, 4.624, 4.625, 4.626, 4.627, 4.628, 4.629, 4.630, 4.631, 4.632, 4.633, 4.634, 4.635, 4.636, 4.637, 4.638, 4.639, 4.640, 4.641, 4.642, 4.643, 4.644, 4.645, 4.646, 4.647, 4.648, 4.649, 4.650, 4.651, 4.652, 4.653, 4.654, 4.655, 4.656, 4.657, 4.658, 4.659, 4.660, 4.661, 4.662, 4.663, 4.664, 4.665, 4.666, 4.667, 4.668, 4.669, 4.670, 4.671, 4.6

LEGEND

- GENERAL COMMON ELEMENT
- LIMITED COMMON ELEMENT TO A PARTICULAR UNIT
- LIMITED COMMON ELEMENT TO ALL UNITS IN SUITE 21
- LIMITED COMMON ELEMENT TO ALL UNITS IN SUITE 21 AND UNIT 29 (APPLICABLE TO ALL UNITS WITHIN THE ELKSTONE 21 BUILDING)
- CEILING HEIGHT (VERTICAL UNIT BOUNDARY)
- CEILING CHANGE IN CEILING HEIGHT (VERTICAL UNIT BOUNDARY)
- DENOTES UPWARD SLOPING CEILING



FIRST LEVEL



PAGE 4632

FOLEY ASSOCIATES, INC.
 ARCHITECTS
 970-728-6153 970-728-6050 fax
 P.O. BOX 1885
 125 WEST COLOREDALE BLVD.
 TELLURIDE, COLORADO 81405

Project No: 41
 Location: MC
 Checked By: [Signature]
 Start Date: 10/2013

**THIRD AMENDED MAP FOR ELKSTONE COMMON INTEREST COMMUNITY MAP
 LOCATED ON LOT 600A, TOWN OF MOUNTAIN VILLAGE, LOCATED WITHIN THE SW 1/4 OF THE NW 1/4,
 SECTION 3, T.42N., R.9W., OF THE N.M.P.M. IN THE COUNTY OF SAN MIGUEL, COLORADO**

NOTE: THE PURPOSE OF THIS PAGE IS TO
 CONTRAST THE REVISIONS OF THE OLD
 DRAWING WITH THE REVISIONS OF THE NEW
 DRAWING. OTHER CHANGES ARE INCLUDED
 AS PART OF THIS PAGE.
 NOTE: ALL BUILDING STRUCTURAL ELEMENTS
 ARE LCE ELKSTONE 21 UNITS.