



Australasian Marine Associates



MARINE

COASTAL

SERVICES



Offering the best
in marine and
coastal consulting
through alliance
partnerships

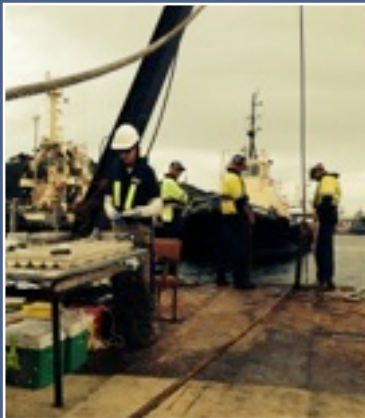
Australasian Marine Associates provides specialist consulting services for addressing marine infrastructure project conditions and permitting and licence conditions at a State and Federal level. Coupled with advanced marine environmental, coastal processes and bathymetric mapping capabilities, we supply a fully integrated service for projects that interface with marine and coastal environments.

Australasian Marine Associates marine specialists offer targeted marine solutions in areas including:

- Marine ecology assessments and biological monitoring programs
- Dredging and dredge material disposal monitoring and impact assessments
- Water column profiling and metocean data collection
- Water chemistry and sediment quality analyses
- Geochemical, geological and geophysical characterisation
- Bathymetric and seabed mapping surveys
- Ecotoxicology studies and ecological risk assessment
- Environmental management and due diligence assessments for coastal development and dredging
- Hydrodynamic modelling/ coastal processes
- Ocean Outfall and plume dispersion investigations
- Design and implementation of remediation strategies for nearshore and offshore environments



SERVICES



Our specialists participate within multi-disciplinary teams, to help influence engineering project design and environmental outcomes. We have a specialist knowledge of marine ecology, ecosystem and coastal processes functioning, physical-chemical characteristics, impact assessment, risk mitigation and marine environmental approvals, which provide our clients with opportunities to improve their environmental and engineering practices in all phases of a projects life cycle.

Marine Environmental Services

Australasian Marine Associates has the experience and expertise in marine ecological monitoring, to offer a variety of services in a range of different environments including:

- Tropical, sub-tropical and temperate reef ecology
- Estuarine gill netting, bat trapping and seine netting
- Investigations of incident light levels and sedimentation
- Soft sediment community studies including infauna and epifauna investigations, surveys of seagrass meadows and low profile reefs
- Intertidal surveys, including mangrove and saltmarsh studies
- Fish surveys, including baited remote underwater video
- Marine mammal observations and other charismatic megafauna studies
- Bathymetry surveys and habitat mapping, including drop camera and towed video

Water, Sediment and Metocean Investigations

Our team has developed survey and monitoring techniques for both mobile water quality monitoring, as well as fixed site instrumentation, including:

- Mobile water column profiling and water quality sampling
- Fixed site water quality monitoring, using buoy and mooring systems and where, applicable telemetry for gathering data in real time
- Multiparameter systems including CTD, AWAC, ADCP, Wave rider and tide gauge systems
- Sediment sampling using sediment traps, diver coring, piston samplers, grab samplers and drop corers

Investigations of Coastal Processes

Our specialists have been involved in the monitoring and management of both small and large-scale projects, requiring dredging, near shore excavation and ocean outfall investigations, including:

- Monitoring of suspended solids and turbidity and modelling of sediment transport processes
- Monitoring and modelling of metocean conditions, including drogue and tracer validation studies

AUSTRALASIAN MARINE ASSOCIATES

PROJECT EXPERIENCE



Our team include specialists with experience in working in west Africa, the Torres Strait Islands, Papua New Guinea and the Solomon Islands, as well as throughout Australia. Our team consists of expertise in reef ecology, seagrass and estuarine ecology, marine megafauna surveys, water quality and sediment chemistry, oceanography and ecotoxicology.

Our depth of experience is vast and our team consists of personnel who sit on the DoE Commonwealth Sea Dumping Independent Review Panel.

In addition to our technical expertise, Australasian Marine Associates also offers Commercial Divers, who are certified to AS2299.

Some of the studies previously undertaken by our team include:

- Principal Marine, Eden Geotechnical and Environmental Investigations, Crown Lands, New South Wales, 2015.
- Principal Marine, Implementation of SAP for Maintenance Dredging of Gladstone Marina & Auckland Inlet, Gladstone Port Corporation, Queensland, 2015.
- Principal Marine, Clarence River Review of Environmental Factors, Crown Lands, New South Wales, 2014.
- Principal Marine, Sediment Sampling and Analysis, Maintenance Dredging, Gippsland Lakes, Gippsland Ports, Victoria, 2014.
- Principal Marine, Lewis Channel Seagrass Study, Gippsland Ports, Victoria, 2014.
- Principal Marine, Preliminary Feasibility Study, West Bay Barge Landing, Mungyalalu Truscott Airbase, Darwin, NT, 2014.
- Principal Marine, Preliminary Feasibility Study, Outer Harbour, Dredge Material Reclamation Study, Flinders Ports, SA, 2014;
- Gladstone Port Corporation, Environmental Lead – Western Basin LNG Dredging 2012 to 2014.
- Port of Melbourne Corporation – Project Manager (Environmental Monitoring), 2008 to 2009.
- Program Leader for the fish trawl program in Port Phillip Bay for the Channel Deepening Project. 2010 to 2012.
- Leading the scientific research and client interaction for the Fisheries Research Branch Climate Change Initiative Program. 2010 to 2012.
- Principal Marine Technical Lead, Metocean, Sediment Surveys, Hydrographic and Geophysics Surveys, Offshore Investigations, Guinea, Rio Tinto Iron Ore, West Africa, 2011-2012.

Contact:

Dr. Daniel Spooner PhD

Director

M: 0404 834 164

E: daniel@marineassociates.com.au

Dr. Adam Cohen PhD

Director

M: 0413 033 500

E: adam@marineassociates.com.au



Australasian Marine Associates

www.marineassociates.com.au