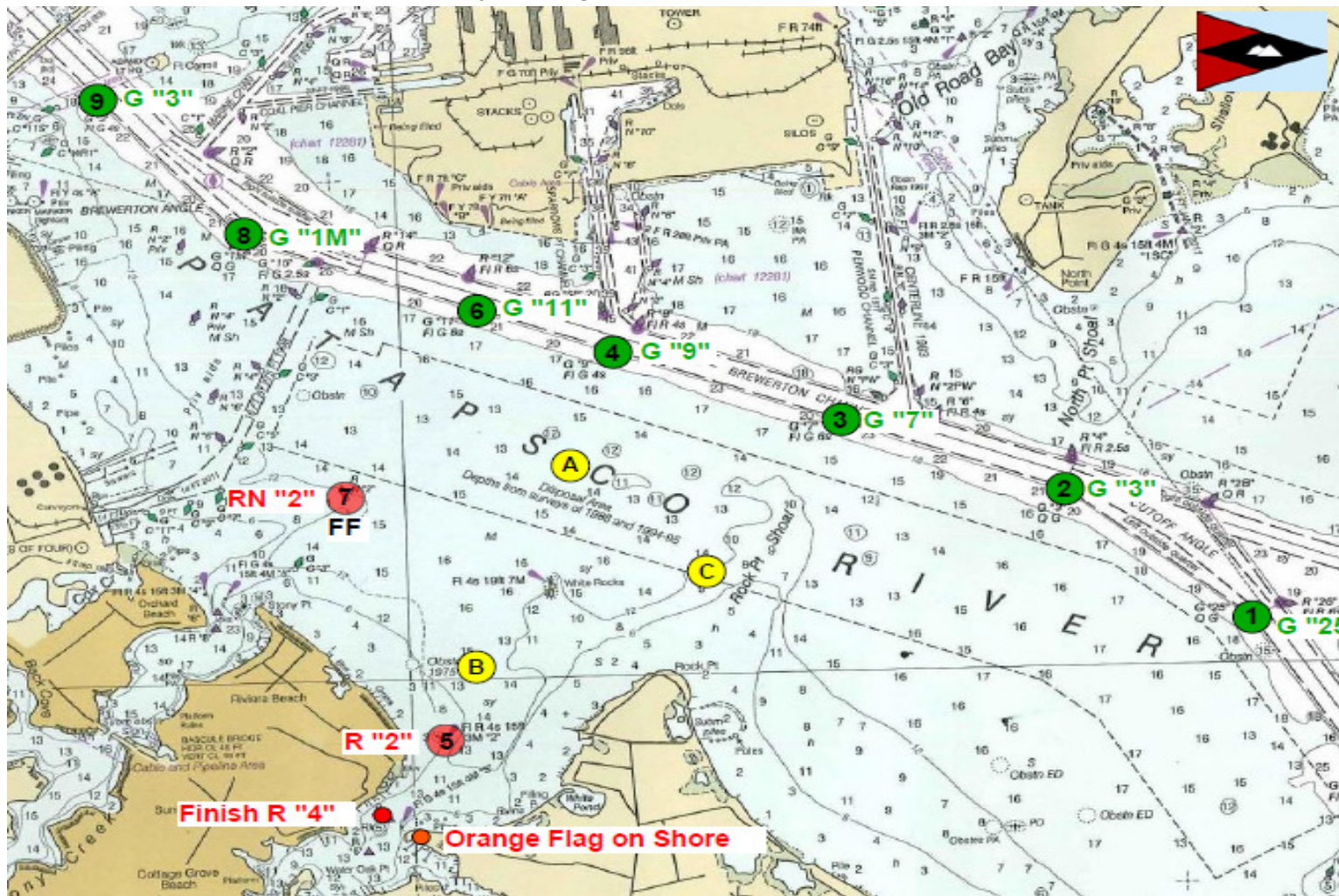


MYC Challenge Race 2019 Courses

Course	Start	1st Mark	2nd Mark	Finish*	Length (nm)
1	RCRA "B"	RCRA 8 (G "1M")	RCRA "C"	Rock Creek R "4"	6.17
2	RCRA "B"	RCRA 6 (G "11")	RCRA "C"	Rock Creek R "4"	4.76
3	RCRA "B"	RCRA "A"	RCRA "C"	Rock Creek R "4"	3.30

leave all marks to starboard

*Finish line is between Rock Creek R "4" and yellow flag on MYC shore.



		TO					
		A	B	C	6	8	Finish
		N39 10.902	N39 10.117	N39 10.500	N39 11.690	N39 12.050	N39 09.360
		W076 29.291	W076 29.706	W076 28.500	W076 29.621	W076 30.777	W076 30.125
		YC "A"	YC "B"	YC "C"	G "11"	G "1M"	R "4"
FROM	A		214°	123°	354°	303°	
	B	034°	0.85	0.74	0.83	1.63	
	C	0.85		0.67°	0.14°	325°	
	6	303°	247°	1.01	1.58	2.10	
	8	0.74	1.01		1.47	2.36	1.71
	Finish	174°	194°	143°		280°	
	0.83	1.58	1.47		0.97		
	123°	145°	120°	100°			
	1.63	2.10	2.36	0.97			
	123°	145°	120°	100°			
	1.63	2.10	2.36	1.00			

Course in Magnetic Degrees