

**INSTRUCTION AND SAFETY
MANUAL FOR MODEL
RAV-22 & RAV-22HA**



***READ THIS MANUAL CAREFULLY
BEFORE USING YOUR FIREARM***

***DO NOT DISCARD
THIS MANUAL***

FEATHER USA/AWI LLC

P.O. BOX 247

EATON, CO. 80615

Phone 1-800-519-0485

Fax 1-970-206-1958

SN _____

CONTENTS

FIREARMS SAFETY	2
EYE & EAR	3
AMMUNITION	3
LOADING	3
UNLOADING	3
SAFETY	4
FIELDSTRIPPING	4
RE-ASSEMBLY	5
PARTS LIST	6-7
CARE & CLEANING	8
SERVICE POLICY	8
SPECIFICATIONS	9
WARRANTY	9
SIGHTS	10
STOCK	10
MAGAZINE	11
ACCESSORIES	12

FIREARMS SAFETY PRECAUTIONS

1. WHEN HANDLING A FIREARM:
 - Never Point it at Anyone
 - Always make sure that the barrel points in a safe direction.
2. Simply removing the magazine does not make a firearm safe. Always remove the magazine immediately after firing and make sure the Chamber is Empty.
3. Make sure that the fire selector is in the Safe position to guarantee that the firearm is safe whenever:
 - You have stopped firing.
 - You are transporting or moving the firearm
 - The firearm is not in actual use
4. Make sure that a firearm is unloaded whenever:
 - Receiving or handing it to someone
 - Transporting it
 - You are going to clean or dismantle it
5. NEVER load a firearm until you are ready to use it However, always handle it as if it were loaded.
6. ALWAYS wear adequate shooting glasses and ear protection when shooting your firearm.
7. ALWAYS store your firearms and ammunition separately, locked if possible, and out of the reach of children and other inexperienced persons.
8. ALWAYS be sure the barrel is clear of any obstructions.
9. ALWAYS be sure of your shooting backstop, what lies beyond and the safety of bystanders before you shoot.
10. ALWAYS use clean, dry factory ammunition of proper size and caliber for your firearm.
11. NEVER lend your firearm to anyone who is not thoroughly familiar with its operation and of the basic rules of firearms safety. Be certain that anyone using your firearm has read and understands this instruction and Safety Manual.
12. NEVER use your firearm if you are under the influence of alcohol, illegal or legal drugs of any kind. Make certain that anyone who uses your firearm is not under any of these influences.

Warning!

Rifles are classified as dangerous weapons, and are sold by us with the very specific understanding that we are not responsible in any manner whatsoever for their safe handling or resale under local laws and/or regulations. It is dangerous to alter or modify this firearm in any way. Attempts to do so may result in rendering the firearm unsafe. It is illegal to modify or alter this weapon. Attempt to do so will void the warranty, and will be subject to notification of the appropriate federal law enforcement agencies.

EYE & EAR PROTECTION

Always wear adequate shooting glasses and ear plugs or "Earmuff" type protectors whenever you are shooting. Always make certain persons close to you are similarly protected

Unprotected eyes may be injured by powder gas, carbon residue, lubricant, metallic particles or similar debris which may emanate occasionally from any firearm in normal use

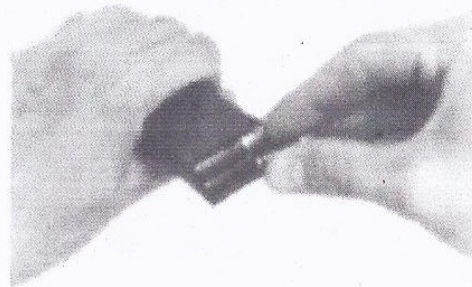
Without ear protection, repeated exposure to shooting noise may lead to cumulative, permanent hearing loss.

AMMUNITION

The RAV-22 is designed to use 22 LR- Long Rifle cartridges , either standard or high velocity. In our extensive testing of the RAV-22, we found certain .22L.R. ammunition to function more reliably than others. The following types of ammunition are recommended for the best overall reliability: CCI MINI MAG, CCI STD.VELLOCITY, WINCESTER SUPER X, REMINGTON HIGH VELOCITY.

LOADING

1. Engage the safety.
2. Remove the magazine (see Magazine pg. 11).
3. Load ammunition into the magazine by slideing the cartridges downwardly into the magazine throat opening.
4. Insert magazine into firearm.
5. Chamber a round of ammunition by fully retracting the bolt handle and then releasing it, to go forward under spring pressure.
6. If the safety is then disengaged, the firearm is ready to fire.



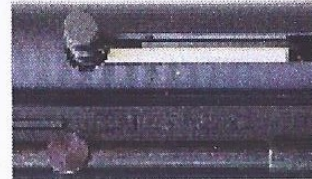
UNLOADING

1. Remove magazine.
2. Draw bolt to rear position.
3. Look inside to be sure that chamber is empty.

**UPON CHANGE OF OWNERSHIP
TRANSFER THIS MANUAL WITH THE
FIREARM.**

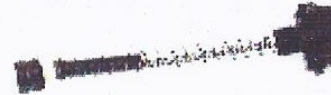
USE OF THE SAFETY

The RAV-22 is designed with an easy to use level safety. To engage safety, simply move lever rearward. It now points to the "S" Stamped in firearm. To disengage safety, move lever forward, pointing to the "F" stamped in firearm.

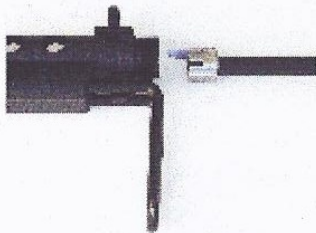


FIELD STRIPPING

1. Remove magazine (see Magazine pg. 11).
2. Draw bolt to rear position, look inside to be sure that chamber is empty.
3. Close bolt, point firearm in a safe direction, and pull trigger.
4. Unscrew rear cap from receiver. CAUTION: REAR CAP IS UNDER SPRING PRESSURE. POINT IN SAFE DIRECTION!
5. Carefully remove rear cap, springs, and buffers from receiver.
6. Slide bolt towards rear of receiver, lining up the cocking handle with the hole in the receiver.
7. Remove cocking handle
8. Slide the bolt completely out the rear of receiver.



SPECIAL NOTE
ALLWAYS LOCK
BOLT OPEN PRIOR
TO INSTALLING
BARREL, TO RE-
DUCE DAMAGE TO
BARREL FEED
RAMP.



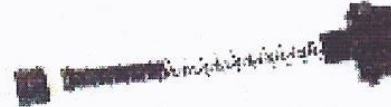
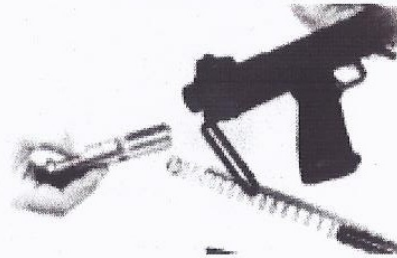
RE-ASSEMBLY

NOTE: BEFORE RE-ASSEMBLY, STUDY EXPLODED DRAWING.

1. Clean and lubricate all necessary parts.
2. Install barrel, making sure locating pin is lined up with key slot in receiver.
3. Install bolt, with firing pin and hammer in place.
4. Line up the cocking handle slot in the receiver with hole in bolt, making certain that the extractor is toward you.
5. Carefully slide bolt assembly in rear of receiver.
6. Bolt will stop when it contacts sear. DO NOT FORCE. Apply a slight amount of pressure and pull trigger, bolt will then move forward
7. Install cocking handle.
8. With cocking handle, move bolt forward (contacting barrel).
9. NOTE: Hammer is now in cocked position. Using hammer spring against hammer, pull trigger, the hammer will click forward. Remove spring.
10. Install bolt spring.
11. Now install the hammer spring (short one):
12. The spring buffer assembly should now be installed, be sure that the bolt spring (small one) is inside the hole in the buffer.
13. Place cap on buffer assembly.

CAUTION:
BEFORE COMPRESSING SPRINGS AND INSTALLING END CAP, MAKE SURE THE HAMMER IS IN THE DROPPED POSITION AND ALL PARTS ARE INSTALLED PROPERLY. ALSO POINT REAR OF RECEIVER AWAY FROM FACE, EYES AND OTHERS.

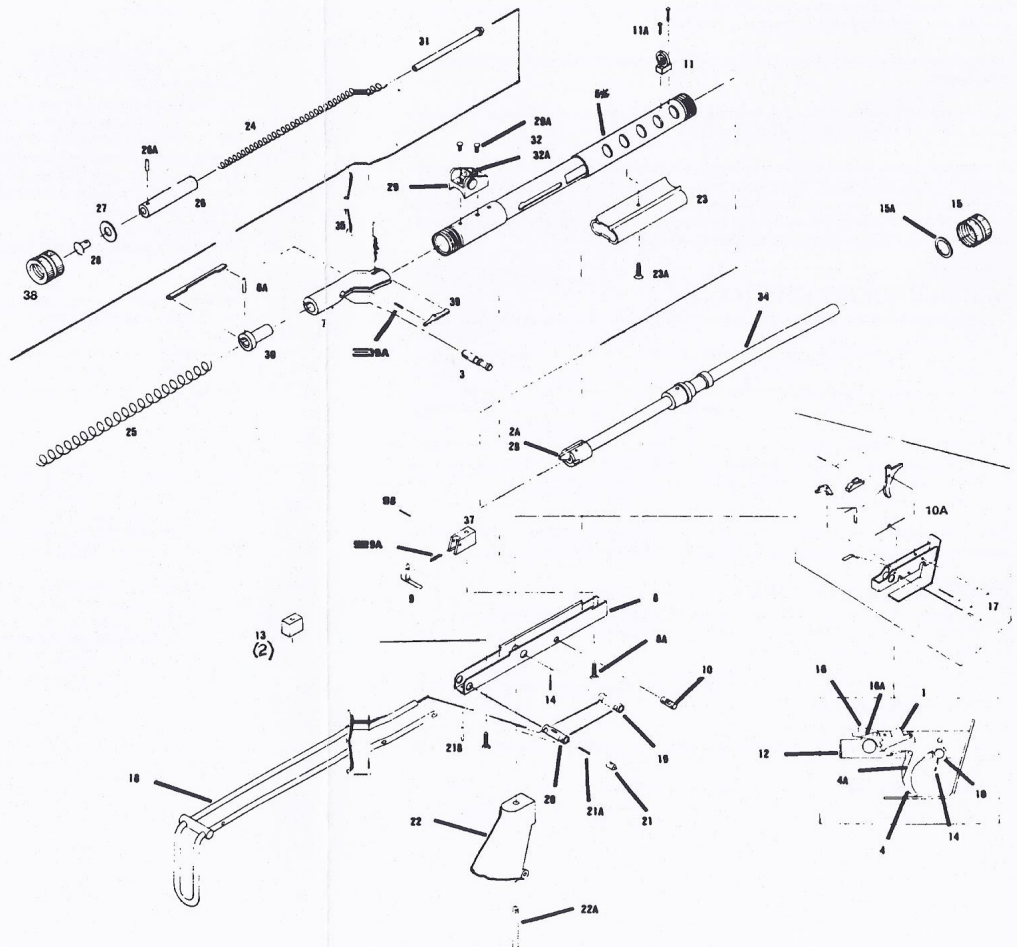
14. Compress springs. you should not feel any binding.
15. Begin threading cap on receiver. Do NOT TIGHTEN.
16. Using your index finger for pressing the center of the buffer assembly, finish threading cap on receiver. NOTE: When properly installed with cap tight, you should be able to press on the center of the buffer and feel a slight movement.



RAV-22 PARTS LIST

PART	DESCRIPTION	PRICE
1	Disconnect	\$4.50
2	Feed Ramp	3.00
2A	Feed Ramp Pin	2.00
2B	Feed Ramp Spring	2.00
3	Charging handle	10.50
4	Trigger	5.00
4A	Trigger Spring	2.00
5*	Receiver/Exchg	65.00
6	Firing Pin	15.00
6A	Firing Pin Retaining Pin	2.00
7	Bolt	45.00
8	Frame/Cmpit w/trigger	29.50-59.50
8A	Frame Screw (3)	2.50
9	Magazine Latch	4.00
9A	Magazine Latch Spring	2.00
9B	Magazine Latch Pin	2.00
10	Safety	4.00
10A	Safety Spring	2.00
11	Front sight	9.50
11A	Front sight Screws (2)	2.00
12	Trigger Housing	35.00
13	Rear Frame Support (2)	2.50
14	Safety Lever	2.00
15	Barrel Nut	9.50
16	Sear	7.50
16A	Sear Spring	2.00
17	Trigger-Sear Pin (3)	2.00
18	Collapseable Stock	34.50
19	Main Pin	3.50
20	Buttstock Latch Housing	4.00
21	Buttstock Latch	2.00
21A	Buttstock Latch Spring	2.50
21B	Buttstock Latch Pin	2.50
22	Pistol Grip	15.00
22A	Pistol Grip Screw	2.50
23	Fore-end	12.50
23A	Fore-end Screw	2.00
24	Bolt Spring	5.75
25	Hammer Spring	5.75
26	Buffer	7.25
26A	Buffer Pin	2.00
27	Back Plate	2.00
28	Buffer Button	3.00
29	Rear Sight Assembly Complete	24.00
29A	Rear Sight Assembly Screws (2)	2.00
30	Hammer	5.95
31	Bolt Spring Guide	4.00
32	Sight Aperture	3.00
32A	Sight Aperture Screws (2)	2.50
2290	Barrel Assembly	79.50
35	Extractor Pin	2.00
37	Frame Support Front	9.00
38	Receiver Cap	6.50
39	Extractor	6.00
39A	Extractor Spring	2.00
53**	Barrel Locking Latch	3.50
55**	Barrel Locking Latch Spring	2.00
59**	Barrel Locking Latch Pin	2.00
61**	Barrel Locking Latch Base	2.00

● Receiver cannot be sold without exchange of old one.
Prices Subject to Change. ** These items not pictured.



CARE & CLEANING

The mechanism should be lubricated with light machine oil, gun oil or Break Free. Do not oil too heavily. The most significant lubrication points are as follows: Various pivot points in the trigger guard housing, such as the trigger pivot, hammer pivot, safety, etc.

Always check to be sure that no cleaning patch or other obstruction remains in the barrel or chamber after cleaning.

As a rust prevention measure, all surfaces, including the bore of the barrel, should be wiped with oil after use. Do not flood the barrel with oil—a light film of oil is best.

A comprehensive field cleaning should be performed to remove powder residue from internal components and as rust prevention procedure, in the event that the gun has been soaked or submerged in water. If sand or other foreign matter in any appreciable quantity enters the mechanism, the reliability of functioning will probably be impaired until the gun is dismantled and thoroughly cleaned. (See field stripping procedure.) We suggest using a military cleaning kit with tooth brush and Break Free.

SERVICE POLICY SERVICE:

1. All Models returned for service must be sent to FEATHER USA/AWI LLC 600 Oak Ave. , Eaton , CO. 80615.
ALL FIREARMS SENT FOR REPAIR MUST BE UNLOADED. All firearms must be sent PREPAID.
2. For best service, include serial number and nature of trouble experienced or work desired.
3. Except for rifles still in warranty, any work performed will bear a net minimum labor charge of \$25.00.
4. Federal regulations must be complied with when shipping any firearm. In certain states and under certain regulations. It may be impossible for us to return a repaired firearm to an individual. It is therefore most strongly recommended that all firearms sent to us for repair be sent through a federally licensed dealer.

IF ANY OPERATING PROBLEMS OCCUR: DO NOT CONTINUE TO OPERATE THE FIRE-ARM, DO NOT ATTEMPT TO REPAIR YOURSELF. CALL OR RETURN FIREARM

PARTS & ACCESSORIES

1. All part orders must be sent to FEATHER USA/AWI LLC, P.O. Box 247, Eaton, CO. 80615.
2. Remittance, model of firearm and serial number must be sent with order.
3. NO orders under \$25.00.
4. Orders must include both part name and part number.
5. Mastercard/Visa/Money Order/ Checks. Include \$9.50 Shipping and an additional \$5.00 for C.O.D.'s.

IMPORTANT NOTICE

RIFLES are classified as FIREARMS DANGEROUS WEAPONS and are sold by us with the very specific understanding that we are no' responsible in any manner whatsoever for their safe handling or resale under local laws and / or regulations.

FEATHER USA/AWI LLC shall not be responsible in any manner whatsoever for the malfunctioning of the firearm, for physical injury or for property damage resulting in whole or in part from: (1) improper or careless handling; (2) defective, improper hand-loaded, or re-loaded ammunition; (3) intentional or negligent discharge; (4) unauthorized modifications; (5) neglect; (6) corrosion; (7) other influences beyond our direct and immediate control. This limitation applies regardless of whether liability is assented on the basis of contract, negligence of strict liability (including any failure to warn). Under no circumstances FEATHER USA/AWI LLC be liable for incidental or consequential damages, such as loss of use of property, commercial loss and loss of earnings or profit.

LIMITED WARRANTY

FEATHER USA/AWI LLC warrants to the original retail purchaser for a period of one (1) year from date of purchase that each firearm sold by Feather USA will be free from defects in material and workmanship. Our obligation under this warranty shall be limited to replacing or repairing any firearm or part there of returned to us and found to be defective in either material or workmanship. This service will be provided free of charge for parts or labor in connection with warranty claims meeting the requirements, including the notice requirement of this warranty. This warranty does not cover defects caused by mishandling or improper care and maintenance.

In order for the original purchaser to avail himself of the protection of this warranty, he must give FEATHER USA/AWI LLC. notice of the defect in materials and / or workmanship which notice must be received by us within one month after discovery by purchaser of the defect, and no later than one (1) year from date of purchase. After such notice is received, FEATHER USA/AWI LLC. will send the purchaser instructions for shipment of the firearm.

This limited warranty is the only express warranty made by FEATHER USA/AWI LLC. FEATHER USA/AWI LLC makes no other express warranty, whether in the instruction manual, advertising or elsewhere.

THE DURATION OF ANY IMPLIED WARRANTY, INCLUDING ANY WARRANTY OF MERCHANTABILITY OR FITNESS FOR A PARTICULAR PURPOSE, SHALL ALSO BE LIMITED A PERIOD OF ONE (1) YEAR FROM DATE OF PURCHASE.

RAV-22 SPECS

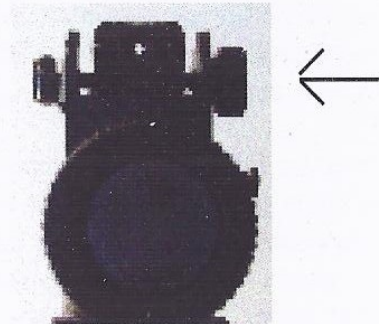
Caliber	22 LR
Operation	Blow Back
Type of Fire	Semi Automatic
Length Stock Extended	35in
Barrel Length.....	17in
Threading	1/2-28
Rifling	6 grooves -1 turn in 16in. R.H.
Weight	3. lbs
Magazine Capacity	
Standard	8 Rounds
Front Sight	HK Type
Rear Sight	Adj. Hooded Peep

Reminder: Periodically check the tightness of all screws on the firearm. After extensive use of firearm it is possible that any screw or screws can work loose. SO DO NOT FORGET TO CHECK THEM!

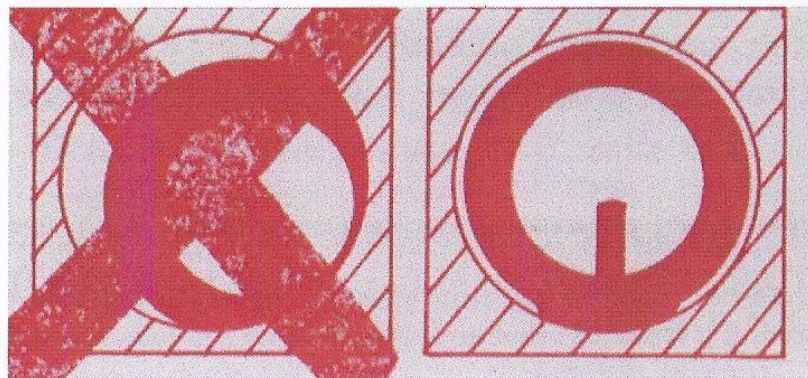
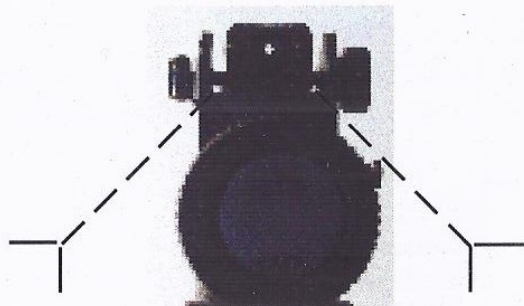
SIGHTING YOUR FIREARM

The RAV-22 is equipped with a Diopitor type sighting system. Anyone not familiar with this type of sight should take extra care in reading and understanding the following instructions on the use of the sighting system.

1. To change the elevation of the rear peep sight, simply loosen the 2 small screws, and move peep sight to desired elevation.



2. To change the windage of the rear peep sight, turn knob on the side of the rear sight housing (clockwise to move the sight to the right and counterclockwise to move the sight left.)



MAGAZINE

1. To remove magazine from firearm grasp magazine in your hand
2. Push on magazine release with your thumb.
3. Pull magazine out of firearm.
4. To insert magazine, push it into firearm.



NOTE: Make sure magazine release is completely seated in magazine.

DO NOT ATTEMPT TO REMOVE ALLEN SCREWS ON BOTTOM OF FRAME. THESE SCREWS ARE SEALED IN PLACE TO PREVENT INDIVIDUALS FROM TAMPERING WITH INTERNAL MECHANISMS. TAMPERING WITH THESE SCREWS MAY CAUSE FIREARM TO MALFUNCTION AND CAUSE INJURY. TAMPERING WITH THESE SCREWS WILL VOID YOUR WARRANTY.

WARNING: NEVER RELEASE BOLT FORWARD UNLESS BARREL IS IN FIREARM!

A WORD TO THE WISE

Most gun accidents happen because the shooter carelessly violates the most single most important rule of safe gun handling: ****Always Keep Barrel Pointed in a Safe Direction.****

KEEP THIS MANUAL WITH YOUR FIREARM.

**INSTRUCTION AND SAFETY
MANUAL FOR MODEL
RAV-22 & RAV-22HA**



***READ THIS MANUAL CAREFULLY
BEFORE USING YOUR FIREARM***

***DO NOT DISCARD
THIS MANUAL***

FEATHER USA/AWI LLC

P.O. BOX 247

EATON, CO. 80615

Phone 1-800-519-0485

Fax 1-970-206-1958

SN _____