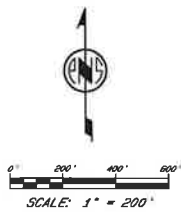
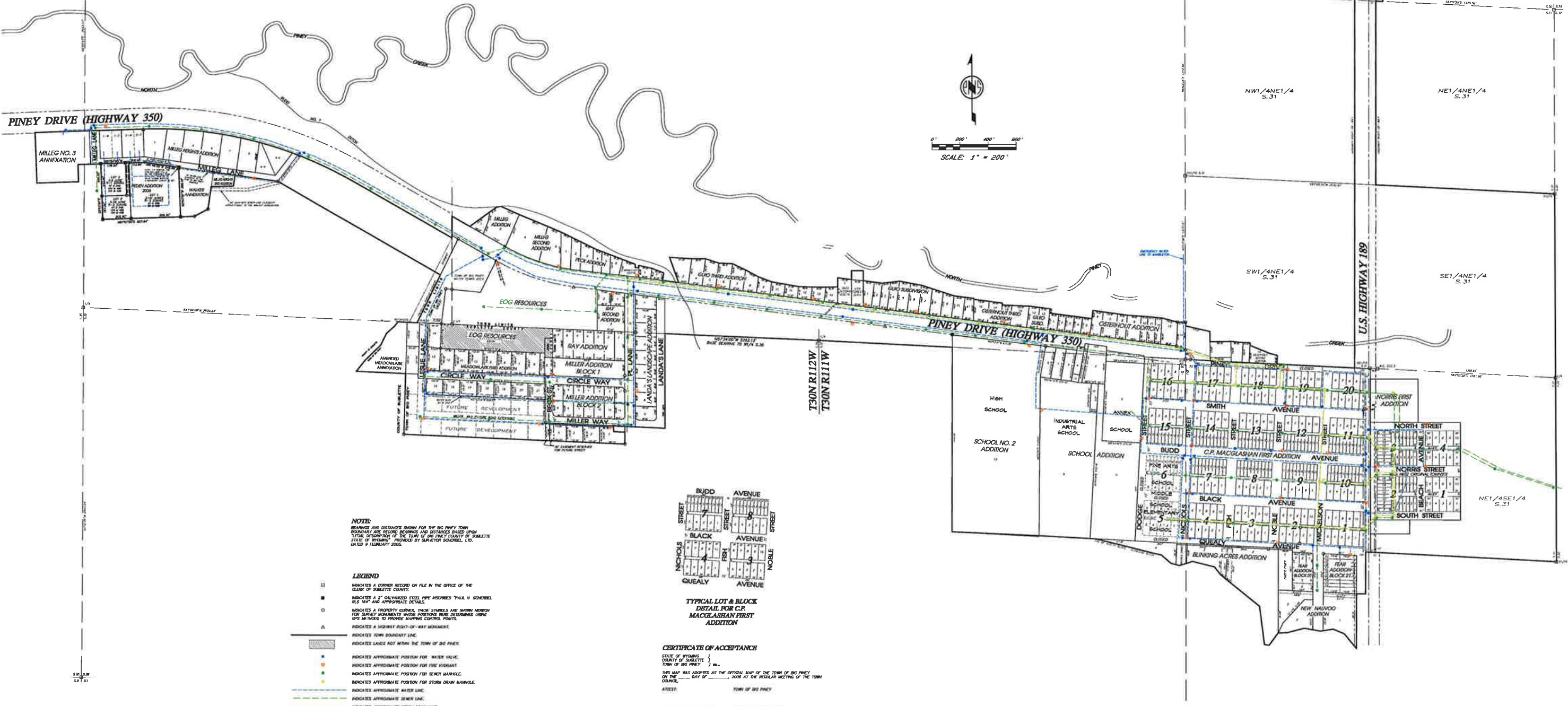




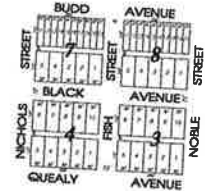
THE TOWN OF BIG PINEY

SUBLETTE COUNTY, WYOMING



NOTE:
BEARINGS AND DISTANCES SHOWN FOR THE BIG PINEY TOWN BOUNDARY AND TOWN BOUNDARY DISTANCES BASED UPON LEGAL DESCRIPTION OF THE TOWN OF BIG PINEY COUNTY OF SUBLETTE STATE OF WYOMING PROVIDED BY SURVEYOR SCHERBEL, LTD. DATED 9 FEBRUARY 2006.

- LEGEND**
- INDICATES A CORNER RECORDED ON FILE IN THE OFFICE OF THE CLERK OF SUBLETTE COUNTY.
 - INDICATES A 2" GALVANIZED STEEL PIPE INSORBED "X" IN SCHEDULED OR L&P AND APPROPRIATE DETAILS.
 - INDICATES A PROPERTY CORNER, THESE SYMBOLS ARE SHOWN HEREON FOR SURVEY MONUMENTS WHOSE POSITIONS WERE DETERMINED USING GPS MEASUREMENTS TO PROVIDE HEAVING CONTROL POINTS.
 - ▲ INDICATES A HIGHWAY RIGHT-OF-WAY MONUMENT.
 - INDICATES TOWN BOUNDARY LINE.
 - ▨ INDICATES LANDS NOT WITHIN THE TOWN OF BIG PINEY.
 - INDICATES APPROXIMATE POSITION FOR WATER VALVE.
 - INDICATES APPROXIMATE POSITION FOR FIRE HYDRANT.
 - INDICATES APPROXIMATE POSITION FOR STREET MANHOLE.
 - INDICATES APPROXIMATE POSITION FOR STORM DRAIN MANHOLE.
 - INDICATES APPROXIMATE WATER LINE.
 - INDICATES APPROXIMATE SEWER LINE.
 - INDICATES APPROXIMATE STORM DRAIN LINE.



TYPICAL LOT & BLOCK DETAIL FOR C.P. MACGLASHAN FIRST ADDITION

CERTIFICATE OF ACCEPTANCE
STATE OF WYOMING
COUNTY OF SUBLETTE
TOWN OF BIG PINEY
THIS MAP WAS ADOPTED AS THE OFFICIAL MAP OF THE TOWN OF BIG PINEY ON THE _____ DAY OF _____, 2006 AT THE REGULAR MEETING OF THE TOWN COUNCIL.
ATTEST: _____ TOWN OF BIG PINEY
JACKIE ANTHONY, CLERK PHILIP V. SMITH, MAYOR

WATER AND SEWER
OFFICIAL MAP OF
TOWN OF BIG PINEY
SUBLETTE COUNTY, WYOMING

MoosaLaw
DRAFTING & DESIGN

SURVEYOR SCHERBEL, LTD.
PROFESSIONAL LAND SURVEYORS

§