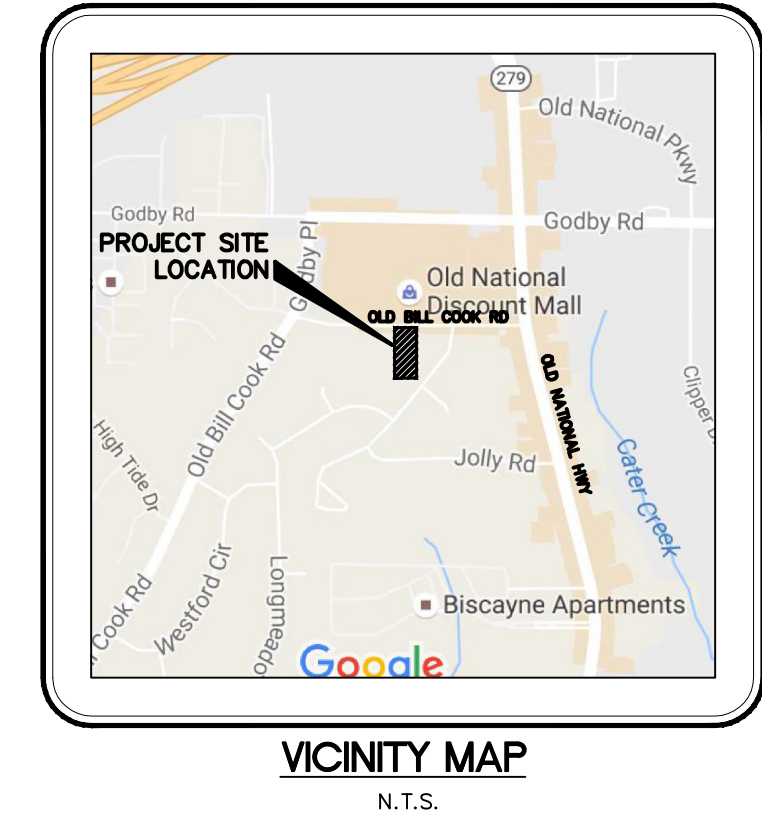


**LEGEND**

IPF	=	IRON PIN FOUND
IPS	=	1/2" REBAR PIN SET
LL	=	LAND LOT
LLL	=	LAND LOT LINE
PL	=	PROPERTY LINE
CL	=	CENTERLINE
BL	=	BUILDING LINE
R/W	=	RIGHT-OF-WAY
SSE	=	SANITARY SEWER EASEMENT
DE	=	DRAINAGE EASEMENT
MH	=	MANHOLE
CB	=	CATCH BASIN
JB	=	JUNCTION BOX
HW	=	HEADWALL
DI	=	DROP INLET
PP	=	POWER/UTILITY POLE
FH	=	FIRE HYDRANT
IE	=	INVERT ELEVATION
FFE	=	FINISHED FLOOR ELEVATION
BOC	=	BACK OF CURB
EP	=	EDGE OF PAVEMENT
SS	=	SANITARY SEWER LINE/PIPE
SSS	=	STORM SEWER LINE/PIPE
FL	=	FENCE LINE
FHL	=	FLOOD HAZARD ZONE LINE
N/F	=	NOW OR FORMERLY
POC	=	POINT OF COMMENCEMENT
POB	=	POINT OF BEGINNING



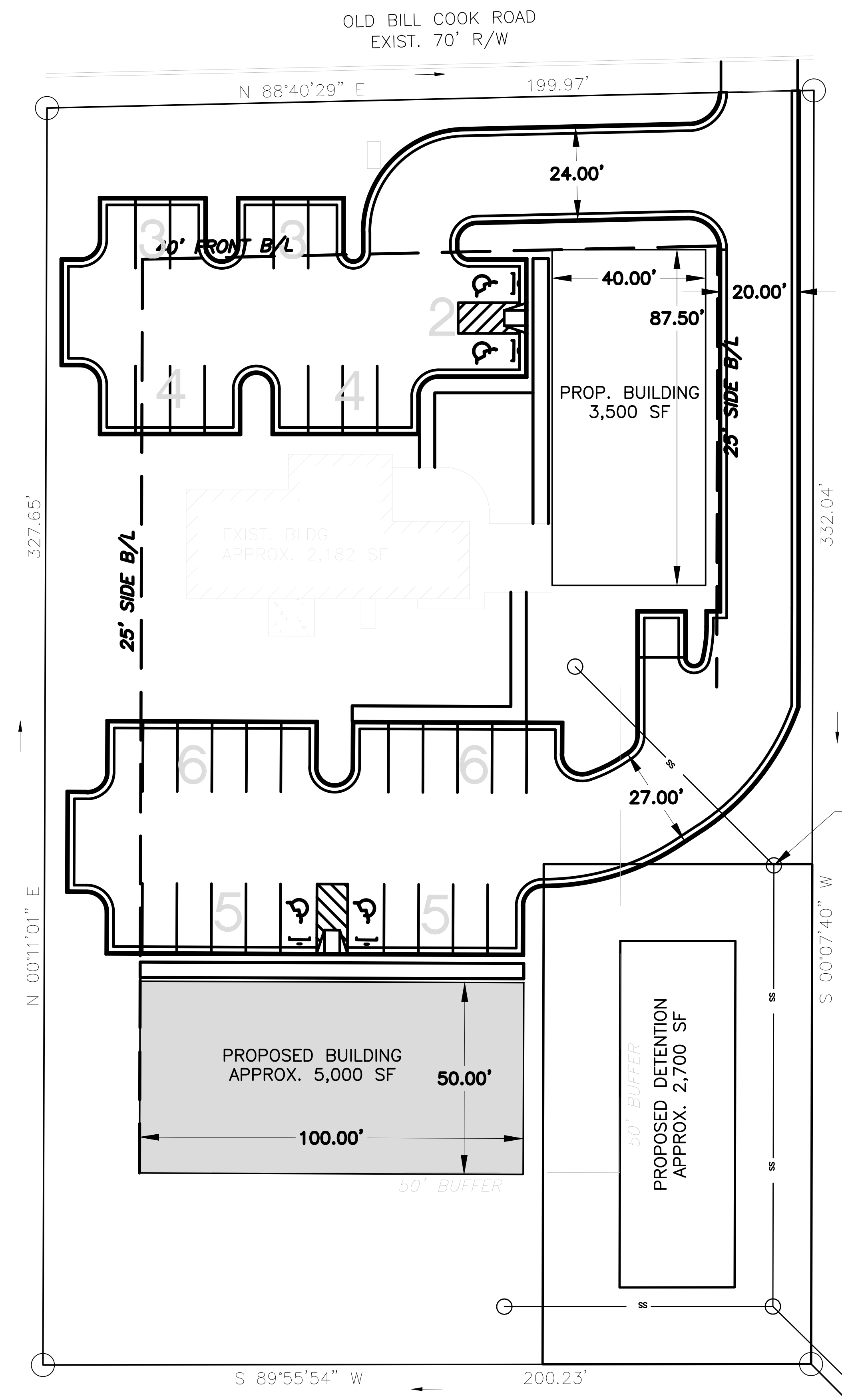
N/F  
VACANT LOT  
5110 OLD BILL COOK RD.  
ZONED C1

N/F  
RICE, BONNIE W.  
5080 OLD BILL COOK RD.  
ZONED O&I

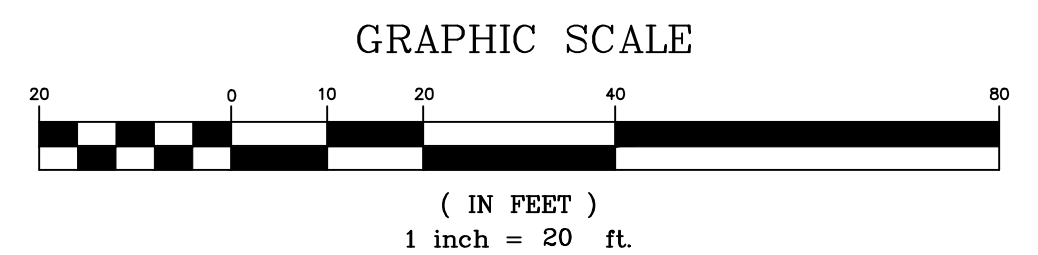
N/F  
WILLIS, SYMMION R.  
5205 NORTHFIELD BLVD  
ZONED R4

N/F  
DIXON, TERRY & RENAY  
5215 NORTHFIELD BLVD  
ZONED R4

N/F  
BAILEY, MARY A. JACOBS  
5225 NORTHFIELD BLVD  
ZONED R4



PARKING SPACES REQ'D = 38 SPACES  
PARKING SPACES PROVIDED = 38 SPACES



© 2005  
**Pinnacle Land Development, Inc.**  
ALL RIGHTS RESERVED

THESE CONSTRUCTION DOCUMENTS AND PERMITTED REPRODUCTIONS, IN WHOLE OR IN PART, ARE INSTRUMENTS OF SERVICE AND ARE THE SOLE PROPERTY OF PINNACLE LAND DEVELOPMENT, INC. UNLESS OTHERWISE AGREED TO, THEY SHALL NOT BE REPRODUCED OR COMMERCE IN ANY MANNER NOR ARE THEY TO BE USED FOR ANY OTHER PROJECTS OTHER THAN THE SPECIFICALLY INDICATED HEREIN WITHOUT WRITTEN PERMISSION FROM AND DUE COMPENSATION TO PINNACLE LAND DEVELOPMENT, INC.

DATE:	DESCRIPTION	BY:	NO.:

**PROPOSED OFFICE FACILITY**

FOR

**OLD NATIONAL ORTHODONTICS**

LAND LOT 68 OF THE 13TH DISTRICT  
FULTON COUNTY, COLLEGE PARK, GEORGIA

**Pinnacle Land Development, Inc.**  
Land Planners & Site Consultants  
2596 Pendergrass Ln. Ellenwood, GA 30294  
(678) 858-4926 fax(404) 212-3371  
email: twigginspld@msn.com



<b>SHEET TITLE:</b>		<b>CONCEPTUAL PLAN</b>	
DRWN: <b>TLW</b>	OWNER: <b>DR. ANGIQUE L. RODGERS, D.D.S.</b>	PROJ. NO. <b>580.0501-01</b>	SHEET <b>3</b> OF <b>10</b>
DSGN: <b>TLW</b>	<b>OLD NATIONAL ORTHODONTICS</b>	LOCATION: <b>COLLEGE PARK, GA</b>	
CHKD: <b>XXX</b>			
DATE: <b>DATE</b>			
SCALE: <b>AS SHOWN</b>			

THESE DRAWINGS REMAIN THE PROPERTY OF THE ENGINEER AND MAY NOT BE USED OR REPRODUCED IN ANY FORM WITHOUT PRIOR CONSENT