



WHAT IS THE JOB OF THE EMERGENCY MANAGER?

Emergency managers prepare evacuation plans and emergency relief procedures that the government can quickly execute in the event of a disaster.

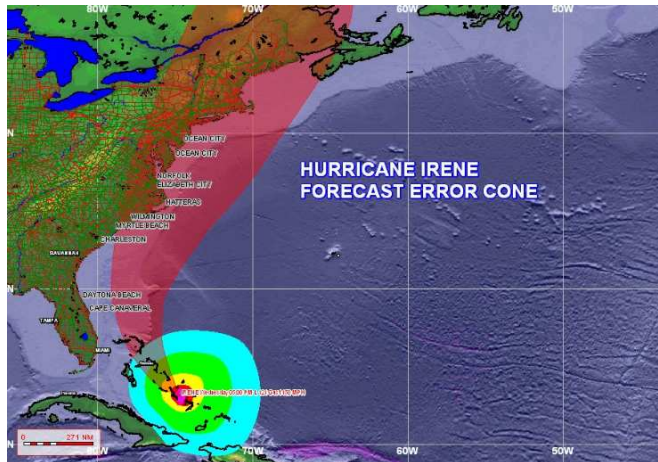


WHAT IS THE JOB OF THE EMERGENCY MANAGER?

When a disaster occurs, emergency managers take the lead and help implement the plans they have created, working with the community, law enforcement, medical, government and rescue professionals.

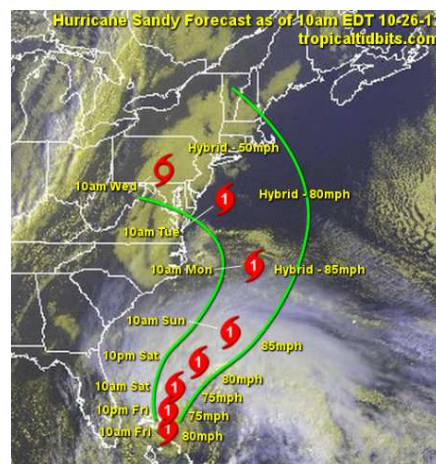
TROPICAL STORM IRENE

September 2011



HURRICANE SANDY

September 2011



WINTER STORM NEMO

February 2013



WINTER STORM NEMO

February 2013



WHAT HAPPENS IN EXETER DURING THESE EMERGENCIES?

Do you have any idea?



POWER

When we lose power,
we lose more than
electricity



SORRY YOUR ELECTRIC IS OUT

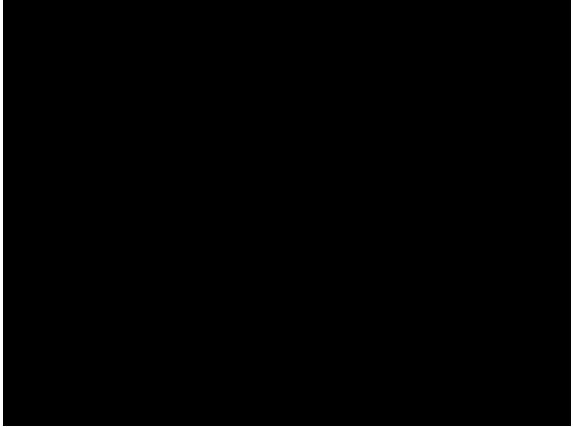
LOL

OH, YOUR ELECTRICITY HAS BEEN OUT SINCE LAST WEEK?

THAT MUST BE TERRIBLE...

POWER
Do you know?

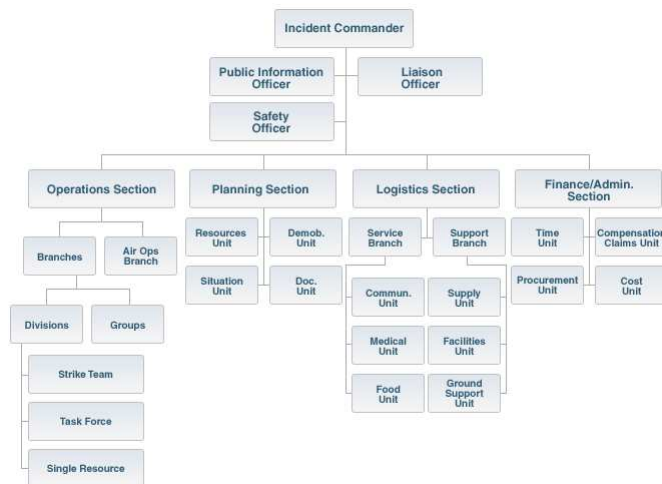
COMMUNICATIONS



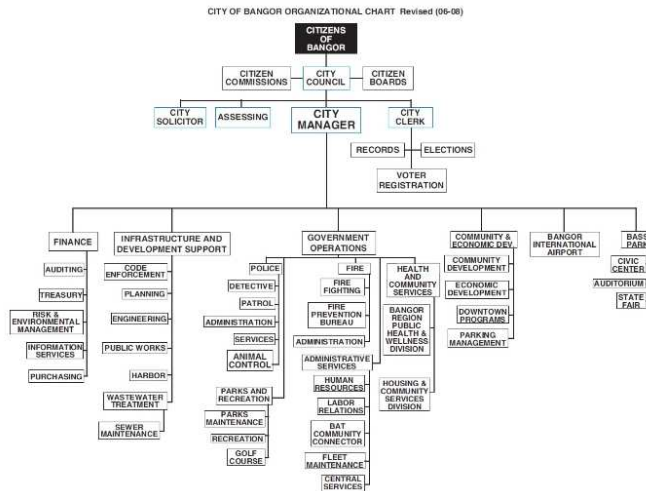
INCIDENT COMMAND



TYPICAL INCIDENT COMMAND CHART



TYPICAL COMMUNITY INCIDENT COMMAND CHART



HOW DO THESE EMERGENCIES EFFECT JOB CORP?

What were some of the challenges you faced?

PROBLEM SOLVING



THE FIRST 72 ARE
ON YOU!



WHAT WE ARE DOING

- ◉ **First 24-Hours: ASSESSMENT**
 - Life Safety Concerns
 - Special Needs Populations
 - Evacuation
- ◉ **Next 24-Hours: RECOVERY**
 - Opening roadways
 - Prioritizing Efforts
- ◉ **Final 24-Hours: RESTORATION**
 - Restoring Power
 - Communications
 - Supplies

WHAT CAN YOU DO?

- ◉ **Plan to be on your own for 3 Days**
 - Have your own kit
 - Have your own “Evac Pack”
 - Flashlights, batteries, Water
- ◉ **Treat your Dorm as its own “Community”**
 - Be vigilant!
 - Extinguishers, first aid training, etc.
- ◉ **Help each other**
- ◉ **Help in the Community?**

WHAT CAN YOU DO?

- ◉ Stay informed!
 - emadirector@town.exeter.ri.us
- ◉ Be Patient!
- ◉ Be prepared to move!

EXETER EMERGENCY MANAGEMENT
DIRECTOR

- ◉ **E. Stefan Coutoulakis**
- ◉ **(401) 295-7500**