

2024

Town of Beverly Shores Fire Pre-Planning



February 2024
Shores Fire, Jay Hennessey

Structure Fires NFPA 2016 -2020 Data

Dangerous and Costly

- 350,800 house fires per year in the United States.
 - 2,840 deaths
 - 11,400 injuries.
 - Losses of \$7.3 billion.
- With a 144 million housing units in the US , 1 out of every 410 houses will experience a structure fire each year.
- Beverly Shores Structure Fire Responses
 - 2024 = 0 YTD
 - 2023 = 2
 - 2022 = 2
 - 2021 = 2, 1-Fatality.
 - 2020 = 0
 - 2019 = 1, 1-Severe Burns.
- Many of the deaths and injuries in the United States can be avoided.

Life Safety and Property Protection

“A Shared Responsibility”

Home Owner		Town		Shores Fire
Smoke and CO Detectors	↔	Financial Assistance with Detectors	↔	Assist with installs if requested
If you have a fire, get out and stay out. Keep your windows and doors closed. Call 911 from outside.	↔	Promote Town Fire Safety. Continue to help Shores Fire Recruit and Retain members.	↔	Rapid response with Trained Firefighters, Engines, Chief, Medics
Reflective House Numbers at the Street	↔	Financial Assistance with House Numbers	↔	Assist with installs if requested
Participate in the 2024 Shore Fire Pre-Plan Program	↔	Promote the 2024 Town of Beverly Shores Pre-Plan Program	↔	Execute the 2024 Town of Beverly Shores Pre-Plan Program

Pre-Planning

Courtesy of the NFPA

- The National Fire Protection Association (NFPA) defines a Pre-Incident Plan as *“a document developed by gathering general and detailed data that is used by responding personnel in effectively managing emergencies for the protection of occupants, responding personnel, property, and the environment.”* ([NFPA 1620- 2010 Ed](#))
- Pre-incident planning with the local fire department facilitates the transfer of critical information to first-responders that can guide their response to a fire incident and improve their response capabilities, which may ultimately save lives and reduce property damage and business interruption.

What is a Fire Response in Beverly Shores?

- On the report of a Structure Fire, Porter County Dispatch will alert Shores Fire, Porter Fire, and County Medics.
 - 3 Engines, with 4 Firefighters on each Engine.
 - 1 Chief
 - 1 Medic
- First Engine on location aka 1st Due will;
 - Tag a Fire Hydrant to ensure a positive water supply to the Engine.
 - Stretch a Pre-connected Cross Lay Line to the Front Door.
- Time from alert to 1st Due on location anywhere in Beverly Shores will typically be < 10 minutes.
- Time to secure a water supply and stretch the line < 4 mins.*
- Chief Officer will determine if more resources are required.

* Longer times for inaccessible homes.

Anatomy of a Fire Engine

1000' 5" Supply Hose.
Hydrant Water to Engine.

1000 gallon water tank

Extra
Hose
and
Tools

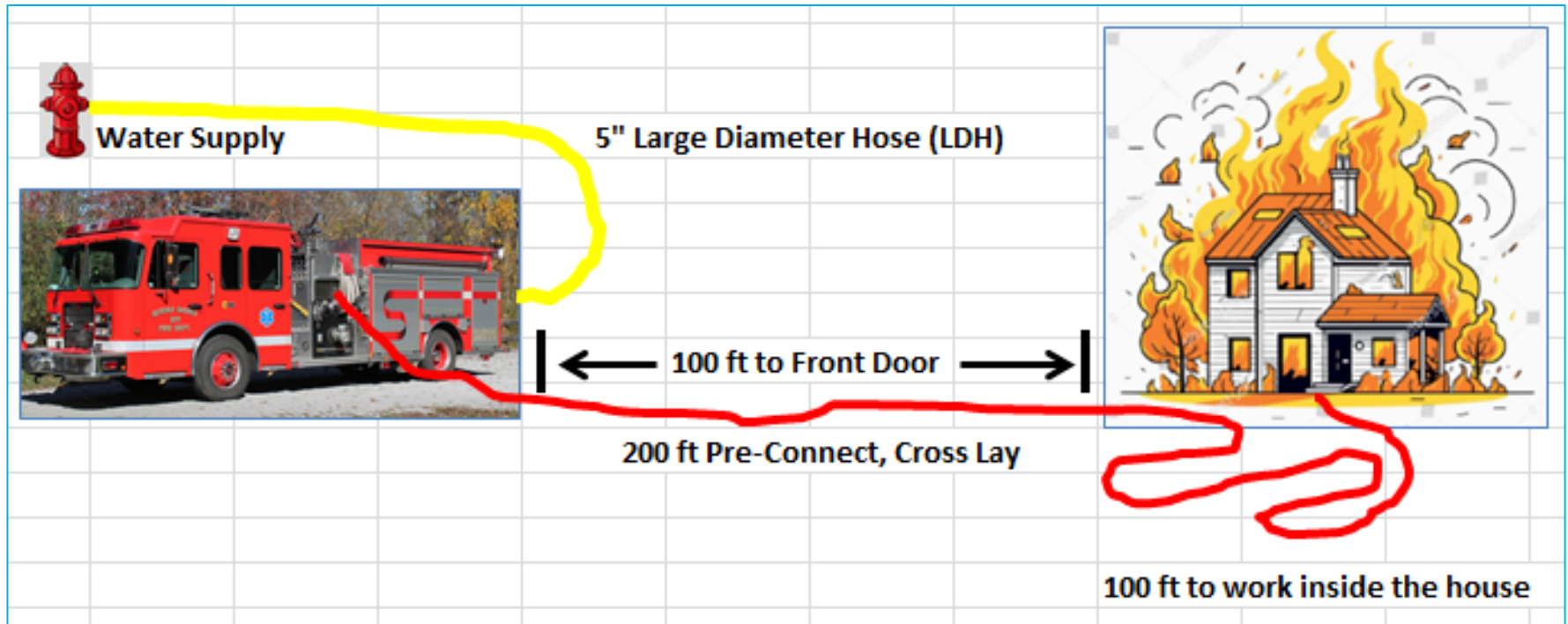


1750 gpm pump.
Engine Water
to Fire.

2 – 200' Cross Lay 1 3/4 "
Pre-Connected Attack Lines.
Engine Water to Fire.

Crew Cab

Best Case Scenario, Quick and Easy



Components of a Pre-Plan

1. Owner Information and Occupancy
2. Fire Attack and Water Supply
3. Building Construction
4. Building Access and Property Details
5. Hazards to Firefighters
6. Utilities

Accessibility and Attack Line Deployment.

The Critical Minutes

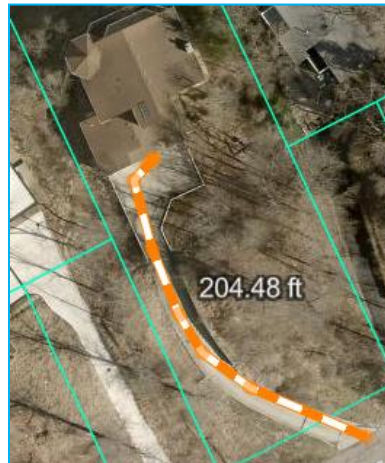
Quick and Easy 100' < House

- 85'



Slower and More Difficult 100' < House < 250'

- 205'



- Typically up a steep driveway.

Very Slow and Difficult 250' < House

- 1170'



- Requires a custom plan.

Pre-Planning can improve fire outcomes.

How to Participate

- 75% of the Pre-Plan information can be obtained from the Porter County's GIS website and Google Maps.
- The remaining 25% can be obtained with a quick 10 minute visit to your home.
 - We will confirm our driveway measurements to ensure that we drag enough hose to your front door.
 - We will ask about occupancy and pets.
 - We will ask to see where your kitchen is, since 50% of all house fires are caused by cooking.
 - We will ask to see where you sleep, just in case we have to search for you in the middle of the night. In fatal fires 55% of the victims are found in a bedroom.
 - We will look for potential hazards to Firefighters.
 - We will make note of where all the utilities enter the home.
 - During the entire visit we will answer any of your questions.
- A good plan will be 75% complete.
- A very good plan will be 100% complete.
- If you would like to your plan to be 100%, please call Jay Hennessey @ (505) 287-0059.

Closing Public

- We hope that you never experience a structure fire.
- A collaborative Pre-Plan between Shores Fire and yourself will improve both life safety and property protection.
- Please consider participating in our 2024 Pre-Planning Program.

Thank You