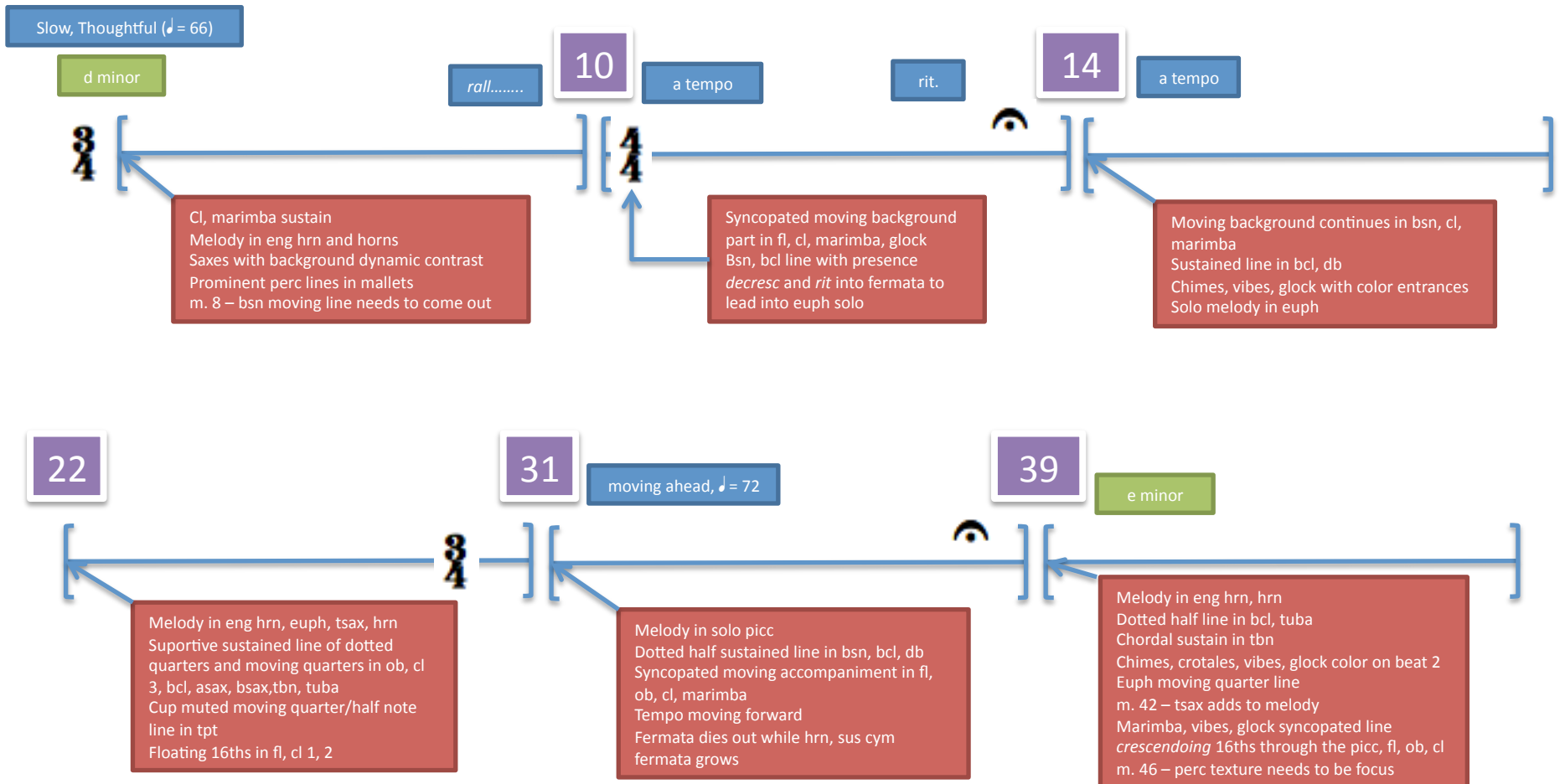


# WAYFARING STRANGER

CHRISTOPHER M. NELSON



49

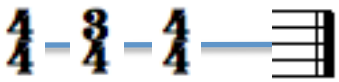
58

66

Broadly (♩ = 62)

rit....

rall.....



Melody in solo oboe  
 Cl solid supporting line  
 Fl, vibes with running 16ths  
 Bell tree with triplets  
 m. 52 – staggered entrances through ensemble outlining part of melody  
 m. 56 – *sfp* with *cresc* into m. 58  
 Accented 8ths in tbn 3, tuba, db, timp – ensemble push

Melody spread through ensemble  
 Dotted quarter/8<sup>th</sup> line in picc, fl, cl  
 Prominent moving line in ob, tpt 3, hrn  
 Moving quarters in tbn 2, euph  
 Countermelody in tpt 1, 2  
*rall* and *cresc* into m. 66

*tutti ff*  
 melody in fl, ob, cl 2, tpt 3, euph  
 Countermelody in picc, bsn, cl 1, cl 3, tpt 1, tpt 2  
 Accented quarter line in asax 1, hrn 1, hrn 3  
 Chordal line in bcl, asax 2, tsax, bsax, hrn 2, hrn 4, tbn, tuba, db  
 m. 71 – *tenuto* in melody  
 m. 73 – syncopated line in bsn, asax, tsax – *decresc rit* and *decresc* to end – smooth and controlled