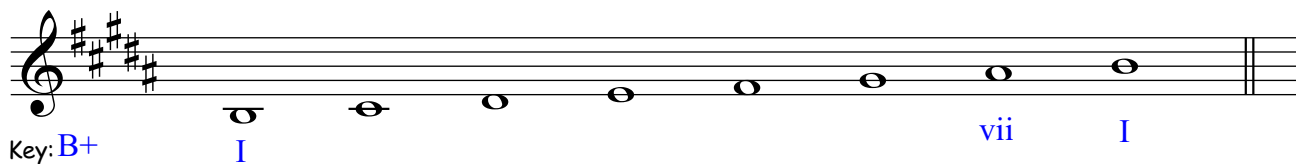


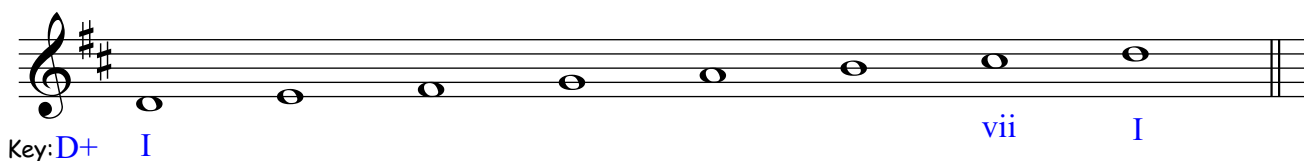
# scales with key signatures - answers

1. Write the following scales with key signatures ascending in the treble clef using whole notes. Name the KEY. Label the TONIC and LEADING NOTE:

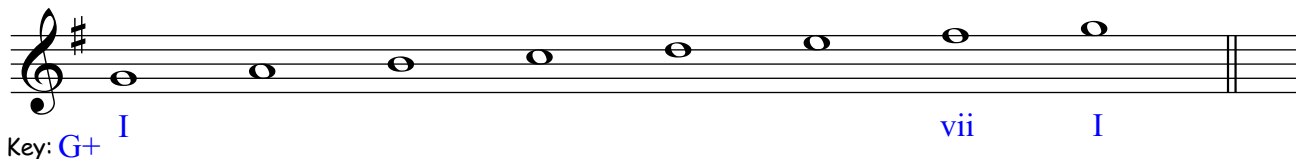
a) the scale with a key signature of 5 sharps



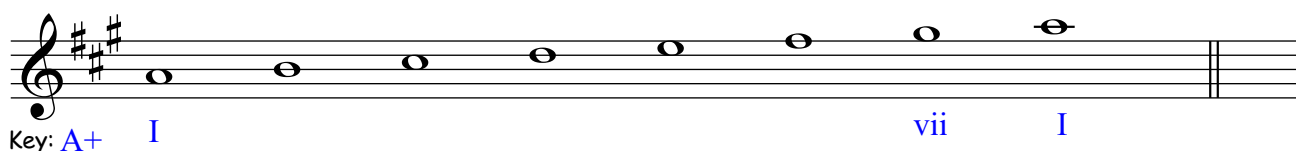
b) the scale with the leading note of C#



c) the scale with the dominant of D

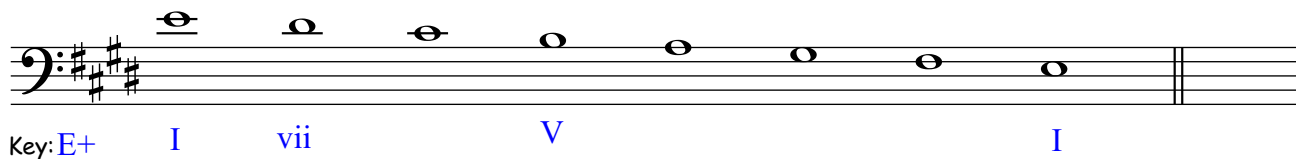


d) the scale with the key signature of 3 sharps

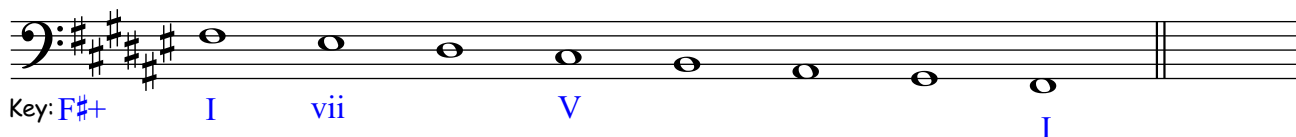


2. Write the following scales with key signatures descending in the bass clef using whole notes. Label the TONIC and DOMINANT and LEADING NOTE:

a) the scale with a key signature of 4 sharps



b) the scale with a leading note of E#



c) the scale with the leading note of B#

