

**MONDAY, DECEMBER 4 –
THURSDAY, DECEMBER 7**

Starting at 8:00 am and ending at 4:00 pm each day.



Hosted by:
Kirtland Community College
4800 W 4 Mile RD
Grayling, MI 49738



Day 1

Introduction
Species Identification
Surface Measure
Standard Grades
Cutting Unit Method

Day 2

General Instructions
Defect Limitations
Species Exemptions
Manufacturing Standards
Hands-On Grading

Day 3

Characteristics vs Defects
Kiln Dried Lumber
Hands-On Grading
Sawmill Tour

Day 4

Hands-On Grading
Railroad Tie Standards
Grading Ties

This event was made possible by the support of our sponsors...



4-DAY INTRO TO LUMBER GRADING

This four-day workshop will include a thorough study and explanation of the NHLA Rules Book, emphasizing the basics of hardwood lumber inspection and the manufacturing of railroad ties.

Who should take this course?

The value of "rules conscious" employees enables a more deliberate manufactured end product, a higher yield from the log, and a better sense of the value of the lumber being handled. This workshop gives yardmen, sawyers, edgemen, sales and office staff, and management an introduction to lumber inspection.

What do I get with this course?

The \$270 fee includes an NHLA Rules Book, coffee and muffins, lunches, handouts, and door prizes.

Please bring a notebook and pencil, eye protection, a calculator, and a lumber rule (if you have one).



Questions? Contact Randi Dodgson:
randi.dodgson@kirtland.edu
or 989-275-5000 ext.1609

More information:
kirtland.edu > events >
community education

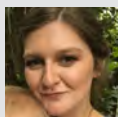
Register here:
<https://www.eventbrite.com/e/4-day-intro-to-lumber-grading-registration-717145269807?aff=oddtcreator>



SCHEDULE OF EVENTS

	Monday December 4	Tuesday December 5	Wednesday December 6	Thursday December 7
8:00 – 9:00	Introductions Coffee and Muffins NHLA History	Coffee and Muffins Recap Q&A	Coffee and Muffins Recap Q&A	Coffee and Muffins Recap Q&A
9:00 – 10:00	Definitions Clear Cutting vs Sound Cutting	General Instructions	Hands-On Lumber Grading	Hands-On Lumber Grading
10:00 – 11:00	Surface Measure / Lumber Rule			
11:00 – 12:00	Brenda Haskill Northern Michigan Hardwood Lumber Species Identification	Species Exemptions/ Color Sorts	Wood Characteristics vs. Defects	Assessment
12:00 – 1:00	Lunch	Lunch	Lunch	Lunch
1:00 – 2:00	Standard Grades/ Cutting Unit Method	Hands-On Lumber Grading	John Gehringer Kiln Dried Lumber	Jim Maltese RTA Standards
2:00 – 3:00		Tom Sherrill Hardwood Lumber Manufacturing Standards	Hands-On Lumber Grading Sawmill Tour AJD Forest Products	Jim Maltese Hands-On Tie Grading Stella-Jones
3:00 – 4:00	Team Grading Exercise			

Instructors and Guest Speakers



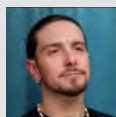
**Randi
Dodgson**

Faculty, Wood Science
Technology at Kirtland
Community College
Graduate of NHLA ITS



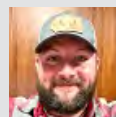
**Brenda
Haskill**

Michigan DNR
Forest Marketing and
Outreach Specialist



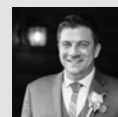
**Tom
Sherrill**

Head Lumber
Grader AJD Forest
Products
20+ years experience



**John
Gehringer**

Kiln Operations Manager
Devereaux Sawmill, Inc.
Great Lakes Kiln Drying
Association



**Jim
Maltese**

Regional Procurement
Manager, Stella-Jones
Corporation
President, Lake States
Lumber Association