

# Growing Good Food in Fort Worth



## **A summary of the Fort Worth Urban Agriculture ordinance**

The City of Fort Worth wants residents to live longer, healthier lives. This guide has been prepared to help you and your neighbors grow fresh, healthy food in the City of Fort Worth.

Understanding the zoning ordinance for urban agriculture will assist you in building great gardens and stronger communities. This guide is a summary of the ordinance.

## How does urban agriculture help our community?

- Urban agriculture can make fresh fruits and vegetables more readily available.
- Urban agriculture can provide income for people who want to grow and sell produce.
- Food grown in the community can supply local businesses, schools and nonprofit organizations.
- Urban agriculture can create jobs and teach people how to grow food.
- Underused or vacant lots can sometimes be used to grow food, improving the appearance of neighborhoods.
- Beekeeping, as part of urban agriculture, can help pollinate plants and increase the amount of produce a garden or farm grows.



Types of urban agriculture	Definition*
Community garden	A shared garden space for crops or ornamental crops divided up by garden members on land permitted for that purpose. A community garden can be run by a nonprofit, neighborhood association or by a member of the community and is open to the local neighborhood.
Urban farm	A public or private, for-profit or nonprofit agricultural operation consisting of planting and harvesting crops, raising fowl and/or beekeeping.
Aquaponics	The combination of aquaculture (farming aquatic species) and hydroponics (plants) to raise crops and fish together.

\*Some definitions are summarized. Reference the zoning ordinance for the full definitions.

## What is allowed in Fort Worth?

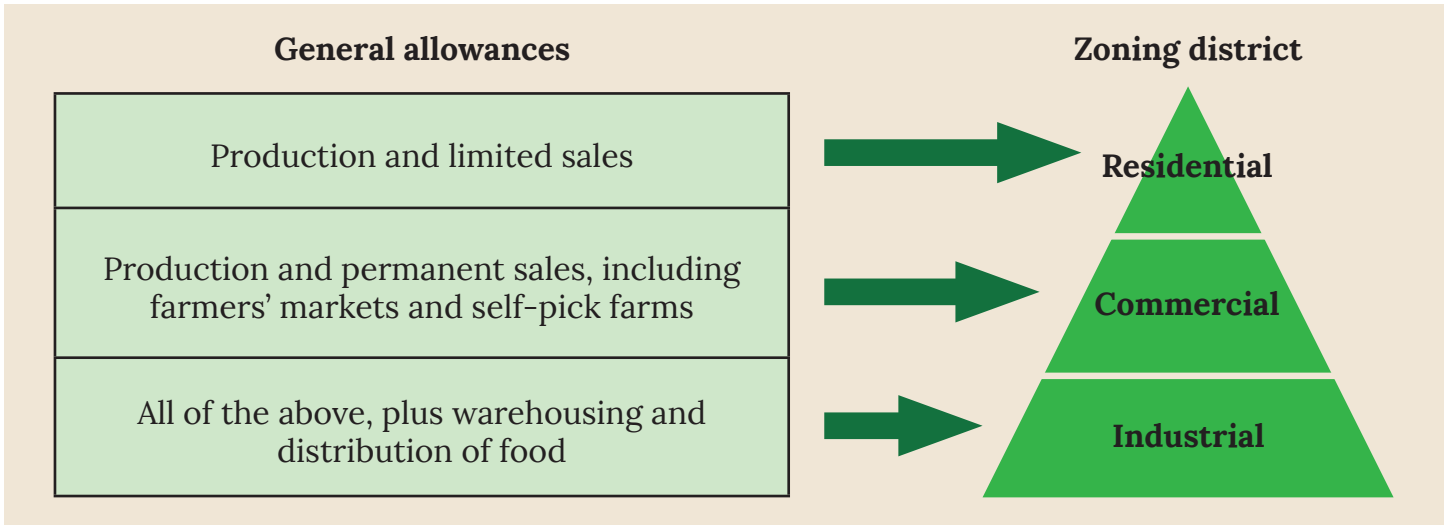
- Home gardens and community gardens.
- Well-kept front yard produce gardens.
- Some small animals, like guinea pigs, rabbits and certain birds. See Fort Worth Code of Ordinances, Sec 11A-22.
- Urban farms.
- Aquaponics inside a covered structure.
- Sales of produce grown in all zoning districts.





# Are there additional guidelines to follow?

- Each zoning district has different allowances. Generally, residential areas have more restrictions to ensure that urban agriculture activities do not disrupt residents.

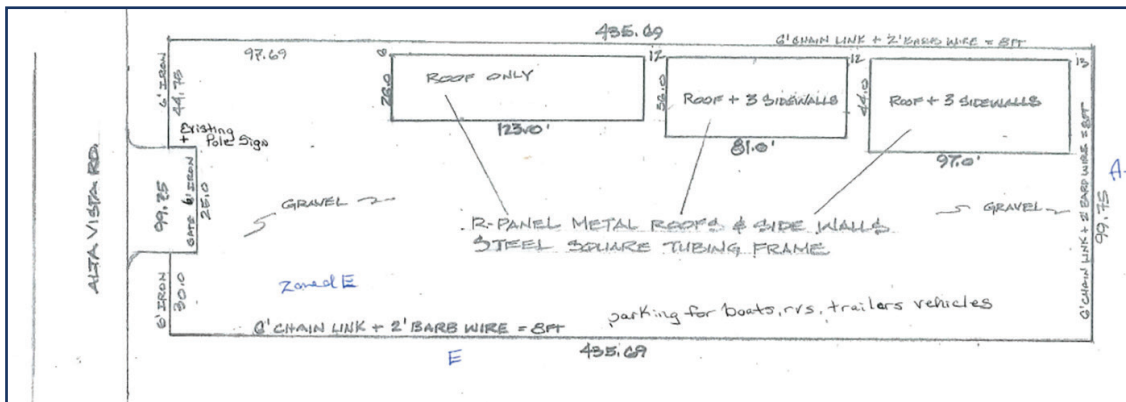


# What documentation does the city require for urban farms?

- A site plan – required for all urban farm sites located on a lot not shared with a residence. See a sample site plan below.
- Site plans show all properties used for urban farms.
- A Land Use Certificate of Occupancy must be obtained for any farm on land not used for other purposes (residential or business) or for any structures being built on urban farm properties.
- A Development Permit for lots over 1 acre in size. It is evaluated by several city departments.



Photo credit: <https://ucanr.edu/blogs/blogcore/postdetail.cfm?postnum=26409>



## Are there city fees for urban agriculture sites?

- Water and sewer fees
  - o Tap fee – if there is not an existing tap  
(<http://FortWorthTexas.gov/water/developers/tap-fees/>.)
  - o Impact fee (<http://FortWorthTexas.gov/water/developers/impact-fees/>.)
  - o Meter deposit.
  - o Normal water and sewer usage fees.
- Stormwater management fees
  - o Monthly utility fee – depends on amount of hard ground cover, such as pavement or buildings (<http://FortWorthTexas.gov/stormwater/utility-fee/>.)

## How do I get started?

If you plan to start an urban farm in Fort Worth, contact the city for a pre-development conference. Start by visiting the Planning and Development web page at <http://FortWorthTexas.gov/planninganddevelopment/pre-development/> or by calling 817-392-6226.

### Helpful links

#### Tarrant County Master Gardeners Association

<http://tarrantmg.org/>

Help desk for gardening questions: 817-884-1944 or [tarrantmg@ag.tamu.edu](mailto:tarrantmg@ag.tamu.edu)

#### Tarrant County Food Policy Council Working Group on Community Gardens and Urban Agriculture

<http://www.tarrantcountyfoodpolicycouncil.org/>

#### Texas A&M Agrilife Extension Service

<http://agrilifeextension.tamu.edu/>

#### Metro Beekeepers Association

<http://metrobeekeepers.net>

Urban agriculture uses in Fort Worth										☑ Allowed*
Adapted from the Fort Worth Zoning Ordinance										
Zoning district	Community garden	Urban farm	Aqua-ponics, within a structure	General signage	Temporary sales	Farmers' market	Sale signage	Honey-bees	Self-pick sales	Warehousing/distribution
Residential	☑	☑	☑	☑	☑		☑	☑		
Commercial	☑	☑	☑	☑	☑	☑	☑	☑	☑	
Industrial	☑	☑	☑	☑	☑	☑	☑	☑	☑	☑

\*See zoning ordinance for conditions.