



**The correct course...  
for your future success!**

COMPASS 2025 is a strategic, long-range plan to reimagine, rebuild and rejuvenate COM's main campus - - to maximize our great college's educational influence and economic impact on all surrounding communities.

Learn more at [Compass2025.com](http://Compass2025.com).



## ***2018 Bond Advisory Committee***

### ***Meeting #5***

Tuesday, June 19  
6:00 – 7:30 PM

**Texas City-La Marque  
Chamber of Commerce**



# *Review* *2018 Bond Program*

*Dr. Warren Nichols*



## **PRIORITIES:**

- ✓ **100% focused on student success**
- ✓ **100% responsive to COM's Academic Master Plan**
- ✓ **100% responsive to growing regional workforce demands**
- ✓ **Fiscally-conscientious & reasonable**



## New STEAM/Allied Health Building (160,000 SF)

✓ Expansion of Nursing Program (BSN)

✓ New Programs:

- Civil Engineering
- Chemical Engineering
- Electrical Engineering
- Mechanical Engineering
- Surgical Tech
- Imaging Tech
- Dental Hygienist
- Physical Therapy Assistant
- Communications



NEW BUILDS

## New STEAM/Allied Health Building (cont'd) (160,000 SF)

- ✓ Relocate the following programs to the new building:
  - Pharmacy Tech
  - Nursing Assistant
  - Medical Assistant
  - Medical Coding
- ✓ Expanded Cyber Security Networking Lab – Two (2) 1,500 SF Labs, one relocating from Technical Vocation Building & one new
- ✓ Labs & Classrooms to increase prerequisite classes required for expanded Nursing & New Allied Health Programs



NEW BUILDS

## **New STEAM/Allied Health Building (cont'd)** **(160,000 SF)**

- ✓ Physics Lab moving out of Math & Science Building to create a more suitable lab space & replace existing space with Math Classroom
- ✓ Programs moving out of Technical Vocation Building to prepare for demolition
  - Graphic Arts Lab
  - Computer Science Lab
  - Drafting Lab
  - Geology Teaching Lab
- ✓ Lecture Classrooms, Office Suite for Nursing & Allied Health, Office Suite for STEAM Programs, Adjunct Suite, and Student Lounge & Study/Collaboration spaces



NEW BUILDS

## New Industrial Careers Building (90,000 SF)

- ✓ Expanded Process Technology Program
- ✓ New Instrumentation & Electrical Program with three (3) 1,350 SF Labs
- ✓ Relocate Gulf Coast Safety Institute, OHST, & HVAC programs back on campus with growth to eliminate yearly lease cost from the M&O
- ✓ OHST Program Classroom and Labs
- ✓ HVAC Program Classrooms and Computer Lab
- ✓ Office Suites, Adjunct Suite, and Study/Collaboration spaces throughout the building



NEW BUILDS

## **New Industrial Careers Building (cont'd) (90,000 SF)**

- ✓ Campus Data Center to be relocated from the Technical Vocation Building to new Industrial Careers Building
  - Office Suite for IT/IR for 21 Staff & Administrative Assistants with conference room & workroom
  - Educational Technology Suite
    - 2,000 SF Innovations Lab
    - 2,000 SF Instructional Assessment Lab
    - Recording Studio
    - Sound Booth
    - Distance Education Faculty Staff Training Room
    - Nine (9) Offices



NEW BUILDS

## **New Student Success Center (60,000 SF)**

- ✓ Bring campus functions (including BoT meeting room) on campus to eliminate space needed at Appamattox & create a new multi-purpose conference center
- ✓ Bring other functions (i.e. Marketing & Grant Writing) back on campus to eliminate space needed at Appomattox
- ✓ New layout to consolidate Student Services and create better adjacencies for streamlined process of Admissions, Financial Aid, Help Center, Student Success, College Connections, the Veterans Center, Testing Services, Student Engagement, the Business Office, and Dean of Students.
- ✓ New layout to bring College Leadership Team together in a collaborative suite



NEW BUILDS

## Physical Plant Expansion

### Fine Arts Building Theater Additions & Renovations

- ✓ COM AMP-Fine Arts needs a medium-sized proscenium theatre space for use as a concert hall
  - Theatre's PRIMARY NEEDS are in connection with the growth of our academic program & students needs for training

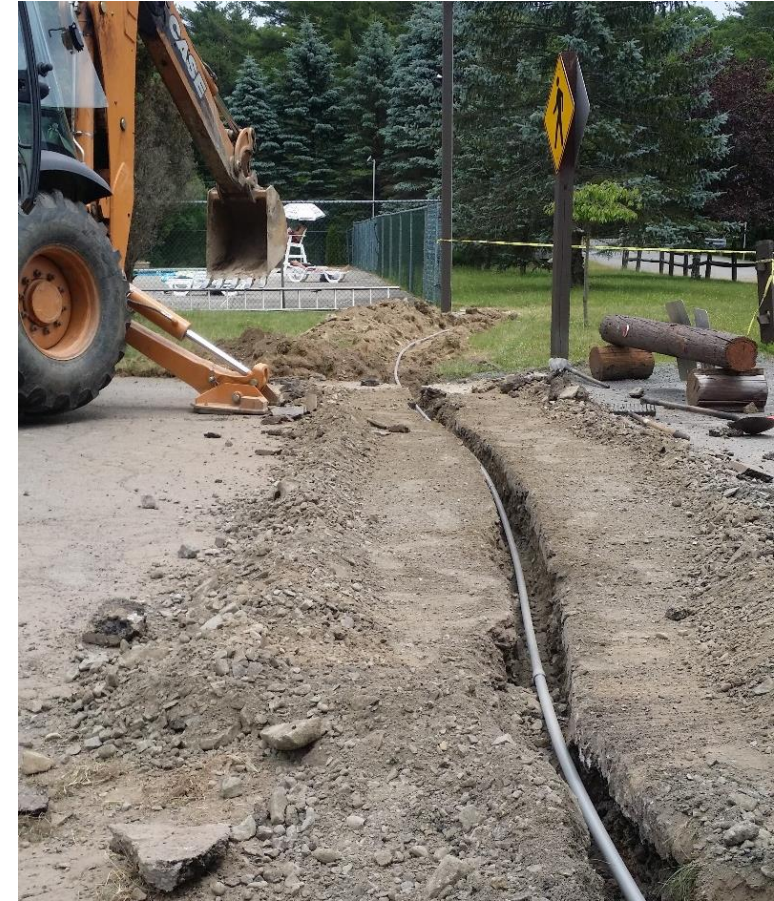
### Life Cycle & Technology Upgrades

- ✓ Math & Science Building Roof & Skylight Replacement and HVAC & Piping Replacement
- ✓ Campus-wide Energy Management System Upgrades
- ✓ Campus-wide Replacement of the Underground Data Fiber Cabling



## Demolition

- ✓ Police Station
- ✓ Administration & Enrollment Center
- ✓ Tech Voc Building



DEMOLITION

NEW  
BUILDS

ADDITION +  
RENOVATION

DEMO

PROPOSED PROJECT	COST
New STEM / Allied Health Building	\$72,526,740
New Industrial Careers Building	\$40,796,292
New Student Success Building	\$25,105,410
Physical Plant Expansion	\$2,122,680
Fine Arts Building Theater Addition & Renovation	\$4,497,424
Life Cycle & Technology Upgrades	\$5,246,160
Fund Balance Project Repayment	\$3,480,335
Police Station Demolition	\$30,180
Tech Voc Building Demolition	\$666,963
Administration & Enrollment Center Demolition	\$289,721
Contingency (5%)	\$7,738,095
<b>TOTAL BOND RECOMMENDATION</b>	<b>\$162,500,000</b>



# *Board Recommendation + Campaign Plans*



**MONDAY,  
JUNE 25**



**COM Board receives Bond Advisory  
Committee recommendation**

**COM Board calls election?**

## COM Campaign



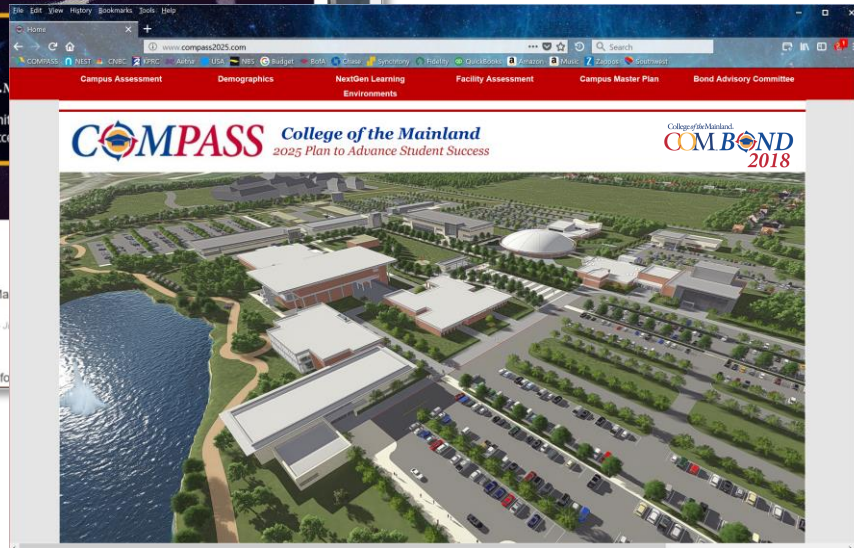
- ☐ Brand the Bond
- ☐ Develop & Publish COM Bond Assets
- ☐ Comprehensive COM Bond PR Campaign
  - Strategic Engagement of Taxing District
    - ✓ Texas City ISD
    - ✓ Dickinson ISD
    - ✓ Santa Fe ISD
    - ✓ Hitchcock ISD

# COMPASS CAMPAIGN PLANS

College of the Mainland Plan to Advance Student Success

## COM College of the Mainland BOND ASSETS

BOND "BUTTON" ON ALL WEBSITES...



BOND PUSH PIECE



BOND SIGNAGE (on campus)



SOCIAL MEDIA





# *Campaign Prep Work*



## Campaign Planning Exercise



- ✓ Divide into 4-5 small groups
- ✓ Review Subcommittee Worksheet responsibilities & sample action items
- ✓ Elect someone to take notes
- ✓ Brainstorm & document potential campaign action items that would be unique and/or specific to each community

- ✓ Report ideas to larger group



*Thank You.*

