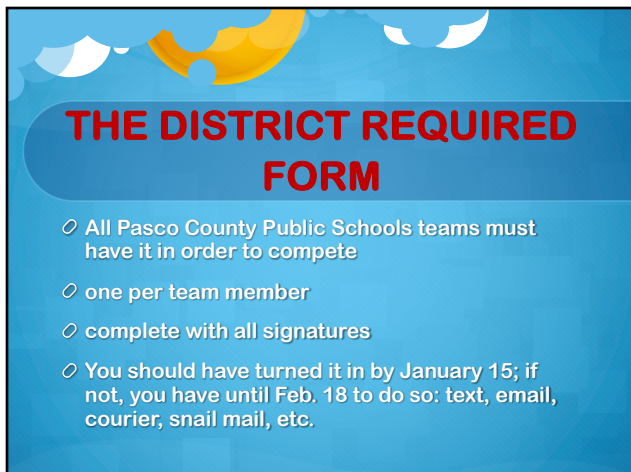




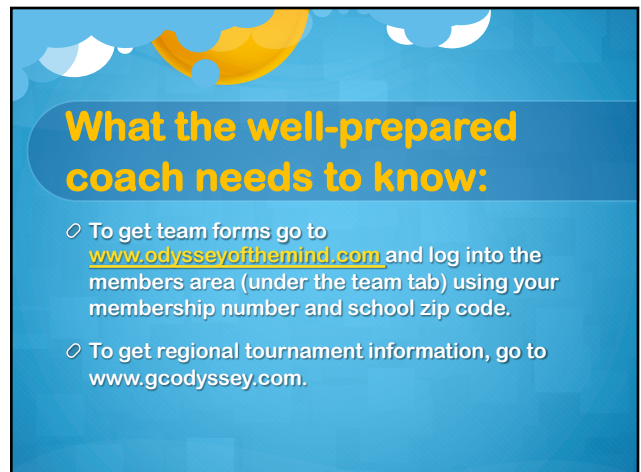
1



2



3



4

What the well-prepared coach needs to know:

- Paperwork – 4 copies of everything (2 sets)
- Outside assistance form will be compared to online registration roster.
- Division 1: coach can scribe paperwork.
- Division 2 & 3: kids have to complete it on their own.

5

STYLE FORM

- Form **MUST** match the categories given in the problem.
- Form **MUST** specify the aspect being scored.
- Example: “Creative use of a trash item” may be how it’s written in the problem.
- On the form the team may write: “Creative use of coffee grounds.”
- Be specific in free choice items. “Backdrop” would include front, back, top, and bottom, and all scene changes.

6

FORMS

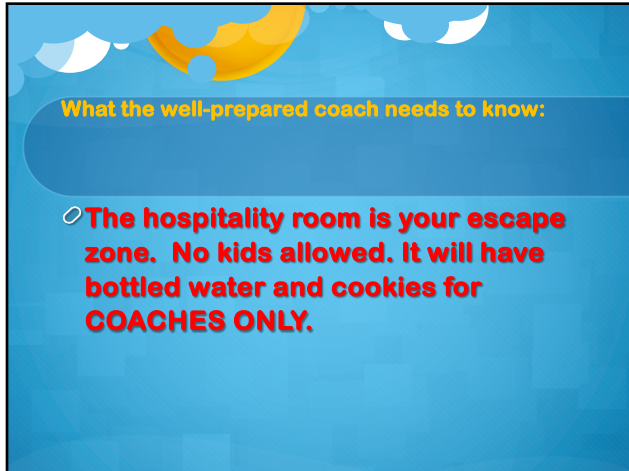
- Team lists for **ALL** problems – copies available online at national site (and here tonight).
- Teams need at least 4 copies of the team list to turn in at staging – again, **BE SPECIFIC**.

7

What the well-prepared coach needs to know:

- Volunteer Assignment – **ON THE WEBSITE BY FEB. 20 – CHECK IT!**
- If you have to change the worker you can. We don't need to know. Make sure the new person is of the same category as the original: adults only can be door monitor, strong for trailer packing, etc.
- Tell whoever is now serving the shift the name of the original worker, so they can check in as that person.
- **SOMEONE** has to fulfill the assignment or the team receives the penalty.

8



What the well-prepared coach needs to know:

- **The hospitality room is your escape zone. No kids allowed. It will have bottled water and cookies for COACHES ONLY.**

9



THE TOURNAMENT

Sign Colors

- **P1: ESCAPE VROOM (Red)**
- **P2: ODYSSEY REOMVENTION (Green)**
- **P3: (INSERT NAME) THE MUSICAL PRODUCTION (Yellow)**
- **P4: MATRYOSHKA STRUCTURE (Purple)**
- **P5: IT'S A CIRCUS WORLD! (Blue)**
- **P6: Primary: TRI-CYCLE TRANSPORT (Orange)**
- **Spontaneous**
- **Bathrooms & Info (Tan)**

10



THE TOURNAMENT

- **FINAL SCHEDULE IS IN YOUR HANDS.**
- All scheduling issues that were listed online on the team registration BY JANUARY 15 were honored if they involved coaches seeing their kids on other teams or other issues.
- If you're coaching multiple teams, the long term time of one team may conflict with the spontaneous time of your other team. You need an adult helper (co-coach or parent).

11



THE TOURNAMENT

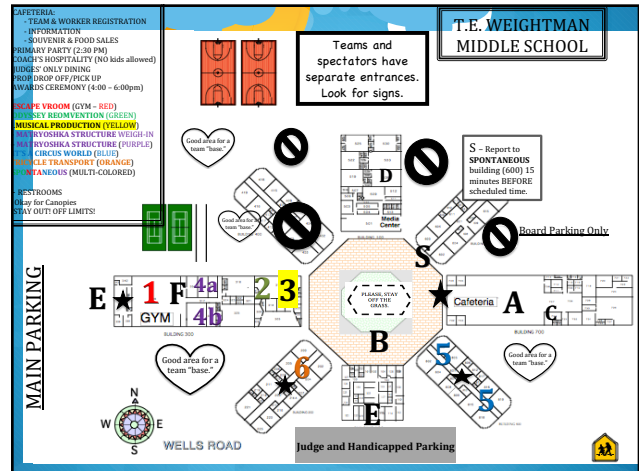
- **PLEASE** Make sure your families know when, where to meet you. (See example form – LAST PAGE in the packet.)
- Make sure they have your cell phone number.
- Make sure they know that if they are late, they may miss their child's long term performance.

12

NEW STUFF (sort of)

- PROGRAMS: Commemorative programs were \$3 each if pre-ordered, \$5 each day of tournament. Pre-orders are closed.
- State tournament is at Orange County Convention Center and it's on first day of spring break: March 12.
- FLOMA wants all teams to go to state tournament. See the bright pink page info for ordering t-shirts and indicating if you'll go. It's a HARD deadline!

13



14

THE TOURNAMENT

- COACH CHECK-IN PROCEDURES (in the packet)
- Coach will pick up colored "Coach Contact Card."
- Coach will complete the card by providing phone number(s) which can be used that day to contact the team in case...
- Coach will exchange the card for the team's registration packet.

15



16

THE TOURNAMENT

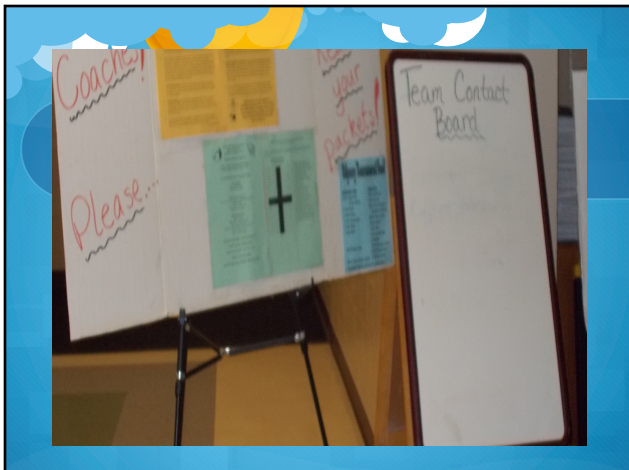
- Coach check-in opens at 7:00am. It stays open until 2:00pm in the CAFETERIA.
- **Where you check in is also known as Information, Lost & Found, First Aid, Source of All Answers, etc.**
- PLEASE SHARE THE INFORMATION IN THE REGISTRATION PACKET WITH YOUR TEAM AND FAMILIES.

17

TEAM CONTACT BOARD

- Check it often
- If we have to reach you for score changes, worker no-shows, lost items, etc., we will put it on the board and try the phone number you left at registration, BUT
- **IT IS THE TEAM'S RESPONSIBILITY TO CHECK THE BOARD OFTEN.**

18



19

THE TOURNAMENT

- Report to spontaneous 15 minutes before your scheduled time. Complete the colored "Spontaneous" Card from your registration packet with the names of the kids on your team. Turn in the card when you check into spontaneous. Coaches can complete the card.
- TAKE THEIR CELL PHONES & HOLD THEM TILL THEY'RE OUT OF SPONTANEOUS.

20

THE TOURNAMENT

- Report to long term CHECK IN area 15-20 minutes before your scheduled performance time.
- Keep quiet and let the kids answer the questions. SPEAK ONLY IF SPOKEN TO.
- Have a team captain who handles the paperwork.
- TAKE THEIR CELL PHONES & TURN THEM OFF. TURN YOURS TO SILENT.

21

THE TOURNAMENT

- Adults can help carry props, but they CAN'T adjust them, straighten them, fix them, assemble them, talk about them, etc.
- *As a coach, you have reserved seats. It's so the judging team can watch you for outside assistance.*

22

THE TOURNAMENT

- Go over the procedures with the kids (in the packet).
- Make sure they know what to expect. Practice set up from different directions.
- When the performance is over, the judging team will talk to THEM. Stay away until the judges say it's okay to help them clear away their stuff.
- The judges will give each team member a participation pin OR give you a set to give to them. If a team member is absent, ask for a pin for him/her.

23

SCORES

- Check back for your RAW long term scores in 30 to 60 minutes. Morning performances usually mean waiting an hour or more for scores. Later performances mean the scores are ready sooner.
- Share the scores with the kids. You will get RAW style and long term scores.
- If THEY have questions/concerns about the scores, you have 30 minutes to return to the site and discuss those concerns with the HEAD JUDGE ONLY.

24

SCORES

- Check your raw score for mathematical errors. If the element was worth 0 or 5, you can't earn 2.5 points. It's either 0 OR 5.
- Subjective scores are NOT debatable.
- Raw scores are neither good nor bad. They are relative to all other scores in that problem and division.

25

SCORES

- IF THE TEAM doesn't understand a score or why they earned a zero for something, you need to keep asking until you can explain it to them.
- If the judging team didn't see it, IT DIDN'T HAPPEN. Even if you have video proof that shows otherwise, we won't view it. All scored items need to be undeniably noticeable so that the judges see it.
- If you need to take something to TRIBUNAL STAGE, make sure you do it FOR THE TEAM.

26

SCORES

- YOU WILL ONLY TALK TO THE HEAD JUDGE ABOUT SCORE CONCERNS
- YOU WILL FIND FREDA IF YOU HAVE CONCERNS ABOUT YOUR SCORE AND YOU DON'T THINK THE HEAD JUDGE HAS HEARD YOU. ASK FOR A TRIBUNAL.
- YOU WILL NEVER, EVER RAISE YOUR VOICE OR "LOSE IT" WITH OUR JUDGES.

27

SCORES

- IF YOU DON'T GO BACK AND PICK UP YOUR TEAM'S SCORES, YOU FORFEIT THE RIGHT TO APPEAL A MISTAKE.
- MISTAKES CAN BE FIXED UNTIL THE JUDGING TEAM IS RELEASED.
- THE JUDGING TEAM IS RELEASED ONE HOUR AFTER THE LAST TEAM PERFORMS IN THAT GROUP – SOMETIMES SOONER.

28

SCORING

- Remember raw scores are all you know until AFTER the awards ceremony. Don't prejudge the team's chances of going to state. Often the winners of the long term portion don't go to state.
- PLEASE MAKE SURE YOUR FAMILIES UNDERSTAND THE SCORING SYSTEM.

29

Region: Gulf Coast (60 Teams)

	Primary	Division I	Division II	Division III	Total
Problem 1	0	3	4	3	10
Problem 2	0	0	2	1	3
Problem 3	0	0	2	3	5
Problem 4	0	5	1	2	8
Problem 5	0	3	2	7	12
Primary	5	0	0	0	5
Total	5	11	11	16	43

30

THE TOURNAMENT

- When not competing, teams should attend other performances to root for school mates, check out the competition, check out the site, or just to find examples of creativity.
- Good sportsmanship is RULE #1.
- No booing, no distractions, no food in the competition rooms, no playing on the roof or stairs, no litter

31

THE TOURNAMENT

- Food and souvenirs sales will continue all day until 3:00pm approximately.
- Find your own space for prop storage.
- Parking is LIMITED, so make sure vehicles are in parking spaces only.
- No grills allowed; E-Z ups, chairs, okay, BUT ONLY IN DESIGNATED AREAS. No canopies in center of school or next to buildings.
- It's school property: no alcohol, tobacco

32

TRASH AND RECYCLING

- If you “camp,” take care of trash by bagging it up.
- Use recycling containers for bottles and cans. Look for signs.
- DO NOT LEAVE BACKDROPS AND LARGE CARDBOARD PROPS AT SCHOOLS. TAKE THEM HOME AND DISPOSE OF THEM.

33

DANCE PARTY

- Socializing and dancing in the gym – prior to awards (45 minutes)
- Lots of fun!!!! – ALL DAY

34

PRIMARY AWARDS!!!!

- 2:30 pm in commons
- Ribbons, recognitions, and drawing to see which team goes to state
- Then primary teams and their families can depart.
- If any stay for full awards ceremony, they sit in the stands.

35

THE MAIN AWARDS CEREMONY

- PLEASE MAKE SURE YOU BRING THE TEAM TO THE AWARDS CEREMONY.
- Awards Ceremony is in the gym.
- Awards Ceremony starts by 4:00 and lasts two hours.
- FULL AWARDS CEREMONY INSTRUCTIONS WILL BE IN TEAM REGISTRATION PACKET.
- Coaches going to state meet for 30 minutes after awards in media.
- Teams and families going to state meet for 30 minutes after awards in the gym.

36

THE MAIN AWARDS CEREMONY

- MEMBERSHIP BANNER FOR AWARDS CEREMONY – details in the packet
- This is NOT the same as your team's membership sign.
- ONE membership banner for the entire membership – talk to your coordinator.
- Choose two banner carriers – team members

37

THE MAIN AWARDS CEREMONY

- Banner carriers line up at 3:45 pm
- Parade of champions is just banner carriers.
- Scholarships awarded and thank you's.
- Teams and coaches sit on floor of gym in assigned areas (in registration packet)
- Parents sit in stands

38

THE MAIN AWARDS CEREMONY

- See chart for who goes to state in each division (Split divisions are totals, so ties can alter the split).
- State tournament is March 12 at OCCC in Orlando.
- Teams must meet the spirit of the problem to go to next level.
- ALL RANATRA FUSCA WINNERS GO TO STATE.
- OMER Awards are for really special behavior; not all are read at ceremony, but are passed on to recipient (due by **2:00 pm** day of tournament). What you write is what I read to the audience.

39

In the next few weeks...

- | | |
|-------------------------|-------------------------|
| ✓ Practice spontaneous. | ✓ Read the Problem. |
| ✓ Read the problem. | ✓ Practice spontaneous. |
| ✓ Self-score. | ✓ Read the Problem. |
| ✓ Choose Style. | |

40

In the next few weeks...

- ✓ what if game
- ✓ what if box
- ✓ check list
- ✓ Invite others to the competition.
- ✓ Encourage the team.
- ✓ Thank your judge, worker, coordinator.
- ✓ Schedule the celebration now.

41

In the next few weeks...

MEET WITH THE FAMILIES:

- PARKING ISSUES
- WHERE TO MEET
- WHAT TO DO AND WHAT NOT TO DO
- EXPLAIN SCORING AND GOING ON TO STATE PROCEDURE.
- TELL THEM ABOUT WEBSITE: WWW.GCODYSSEY.COM.

42

COACHING TIPS

INSIST THEY READ THE PROBLEM, then RE-READ THE PROBLEM

If You Start Me Up

- The Timekeeper will ask the team, "Team, are you ready?"
- Many (especially experienced) teams come up with a clever response

What Setup Time?

- Don't make the mistake of neglecting to figure in set-up time.
- What happens if something goes wrong during setup?
- Who handles what tasks during setup?
- Is it better to have a complicated setup, or a simple setup and more performance time?
- Is there something someone can do during setup to start the performance?
- Time does not stop if the team encounters a problem (except for medical emergencies).



43

COACHING TIPS

INSIST THEY READ THE PROBLEM, then RE-READ THE PROBLEM

Wrapping it Up

In some (not all) problems, the team needs to signal the Judges that the performance is over.

Like the beginning, the end is important. Experienced teams find a "creative" way.

Tell it to the Judge!

After the performance ends, the judges will talk to the team and ask them questions about their solution.

This is a part of the the solution. Let the team know to expect it and practice it with them.

Don't forget the Membership Sign... Contingency Plan!

44

Odyssey of the Mind Recognition

OMER's Award

In recognition of teams or individuals who demonstrate outstanding sportsmanship, exemplary behavior, and exceptional talent

Ranatra Fusca

presented to teams or individuals who exhibit exceptional creativity, either through some aspect of their problem solution, or an extraordinary idea beyond the problem solution

Tournament Placement

determined by total score

Ties are awarded if there is less than 1 point difference

45

In the next few weeks...

DISCUSS WITH THE TEAM AND FAMILIES THE POSSIBILITY OF GOING TO WORLD FINALS:

Costs – at least \$1000 per person

Time – conflicts with graduation or end of year events (May 25-28 in IOWA)

Decide if you will accept or turn down the invitation to Worlds if you earn it, so state can offer it to the next in line that night if applicable.

46

**GOOD LUCK! BE
CREATIVE! SEE YOU
SOON!**

Freda's Contact Info:

813-924-0850, cell

fabercro@pasco.k12.fl.us

47