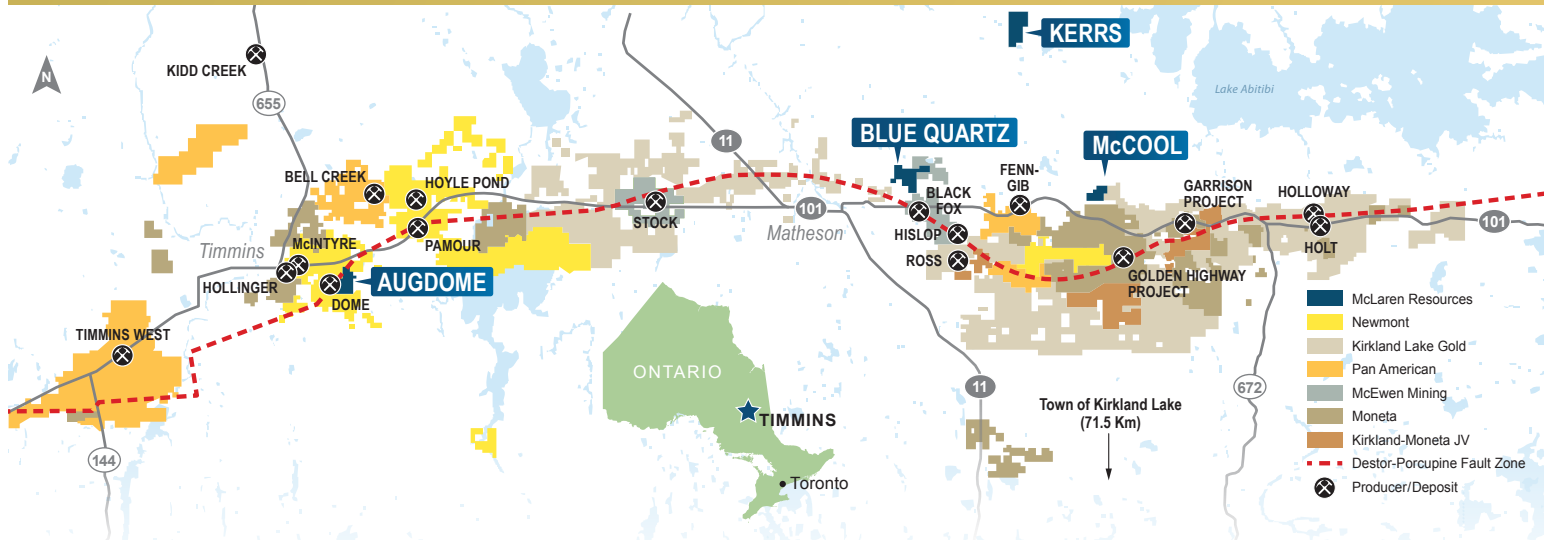


EXPLORING TIMMINS GOLD DISTRICT



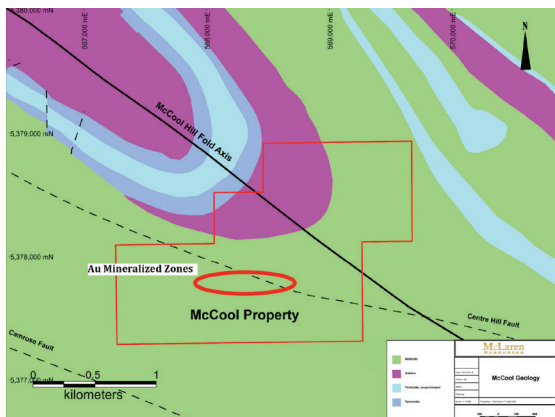
INVESTMENT HIGHLIGHTS

- **Three gold projects with significant exploration potential** situated in the Timmins District, northeastern Ontario, Canada
- **Located adjacent to the highly productive Destor Porcupine Fault Zone** which is situated within The Abitibi Greenstone Belt which has produced in 200 million ounces of gold
- **Productive gold mines that neighbor the McLaren gold properties** include Black Fox, Holt and Holloway mines
- **McLaren's three project properties host known gold deposits**
- **Exploration drilling programs planned for second half of this year.**
- **Company management has a successful track record of exploring and developing gold deposits in the Timmins District**

TIMMINS GOLD DISTRICT

- Timmins is the most productive gold district in Canada, having produced over 70 Moz
- Newmont operates three mines in Timmins
- Significant gold mines include Hollinger (19Moz), Dome Mine (12Moz) and McIntyre (10.7Moz)
- 6 mines and 5 mills are operating in Timmins
- Over 20Moz of resource in place with significant additional exploration potential



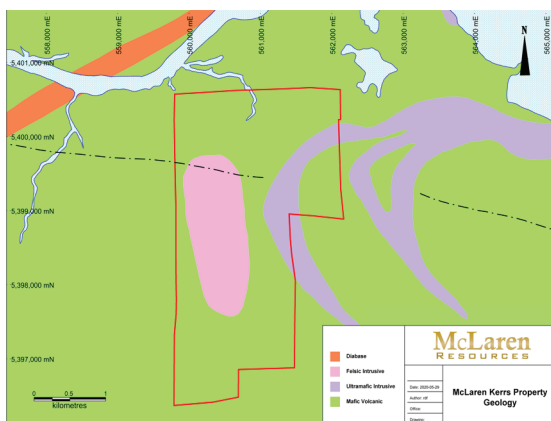


McCOOL PROPERTY

- Mineral Lease acquired 100 percent from Newmont in exchange for providing the Augdome option to Newmont
- 275 ha (679 acres) - 1 Lease consisting of Surface and Mining Leased Lands
- Established gold zone on property
- Several multi-million ounce gold deposits neighbor McCool property incl. Golden Highway Project, Fenn-Gib deposit and Garrison Project
- Exploration drill program planned for fall 2021

KERRS PROPERTY

- Mineral Leases acquired 100 percent from Newmont
- 775 ha (1915 acres) - 5 Leases consisting of Surface and Mining Leased Lands
- Known gold mineralization on property
- Established gold resource on neighboring property adjacent to Kerrs boundary



Share Structure

Shares Outstanding
74,265,511

Warrants
11,357,000

Options
3,200,000

Fully Diluted
88,822,511

Management

John Heslop
Executive Chairman

Radovan Danilovsky
President

David McDonald
Chief Financial Officer

Ken Guy
Exploration Manager

Nadim Wakeam
Corporate Secretary

Board of Directors

John Heslop
Executive Chairman

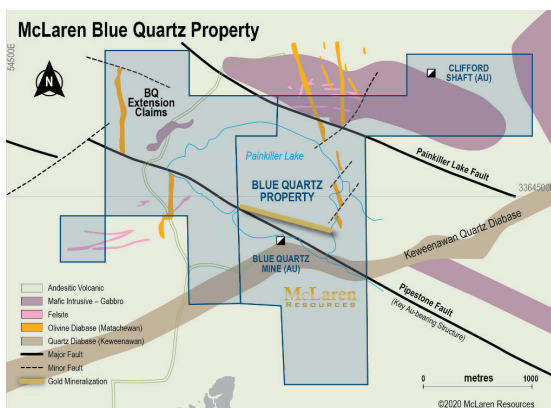
Andrew Ramcharan
Director

John Holko
Director

Paul Crath
Director

BLUE QUARTZ PROPERTY

- 25 patented claims owned 100 percent by McLaren
- 8 crown claims owned 100 percent by McLaren
- 640 ha (1,600 acres)
- NearDestor Porcupine Fault regional geological structure associated with significant Timmins gold deposits
- Historical high-grade gold production
- Potential to further expand gold mineralization



McLaren Properties
located in Ontario's
Timmins Gold District