



## **PSI Waste Equipment Services, Inc.**



**Versa-VIP V1.3 SUPPORT [www.versa-vip.net](http://www.versa-vip.net)**

**PSI Waste Equipment Services, Inc.  
31130 Industry Dr. Bldg A, Tavares, FL 32778**

**Phone: 352-742-4774 Fax: 407-992-9389**

**E-mail: [repairs@psiwaste.com](mailto:repairs@psiwaste.com)**

**[www.psiwaste.com](http://www.psiwaste.com)**

**Versa-VIP V1.3**

Versa-VIP control system is similar to Marathon's standard VIP system.

### **Exceptions**

1. The ram WILL NOT automatically go down unless door is opened and closed. This is for safety reasons. If the door switch fails in the "closed" position the unit will not run.
2. The container switch, if used, is wired in series with the E-Stop. This allows user to reset full feature with E-stop.
3. Ram goes down on time OR pressure, whichever hits first.
4. Versa-VIP also has ERROR features that shut the unit down in case of an error. If error has occurred the light will flash on and off.
  - a) Motor runs too long
  - b) Pressure switch on too long
  - c) Limit switches are stuck or blocked by trash

### **Program Notes**

V1.1 and later- Upon initial start-up and if E-stop is pressed or power is lost START must be actuated for continued operation. If ram is up START must be actuated, then open and close door.

V1.2 or later- If ram is up and e-stop or power is lost all you have to do is actuate START to operate unit. Press B6 and B7 at the same time to deadhead up to set pressure switch. Unit will shut down if B0 is pressed, E-stop is pressed or if pressure switch is actuated.

### **Devices Used**

Ram up limit switch wired N.O., closed with ram is all the way up.

Midpoint limit switch wired N.O. for controls and N.C. for driver's light. Neutral position with ram level.

Pressure switch wired N.O. and plumbed to main pressure line

Container switch wired N.O., closed when container is all the way in position

Start key switch wired N.O.

E-Stop wired N.C.

Drivers light

Full light

Interlock on feed door

Directional valve can be either 2 position (1 coil) or three position (two coils) tandem center.

### **Basic operation**

Ram stays in level position normally. Key switch (spring return) is actuated to raise ram.

Ram goes up, hits ram up limit switch and shuts off. Door is opened, trash loaded, door is closed.

Compactor starts, travels down until either T0 times out or pressure switch is actuated for 2 secs. Ram returns until midpoint limit switch is released to the normal position.

If cycle is interrupted at any point and restarted ram moves up to ram up limit switch.

### **Versa-VIP Timers**

T0- (S) Down time (Time from fully up to fully down without dead-heading)

T1- (M:S) Auto Shutdown. Set for total time from fully up, to fully down, to back to mid-point when motor stops +10 secs. VIP is typically around 00.24.

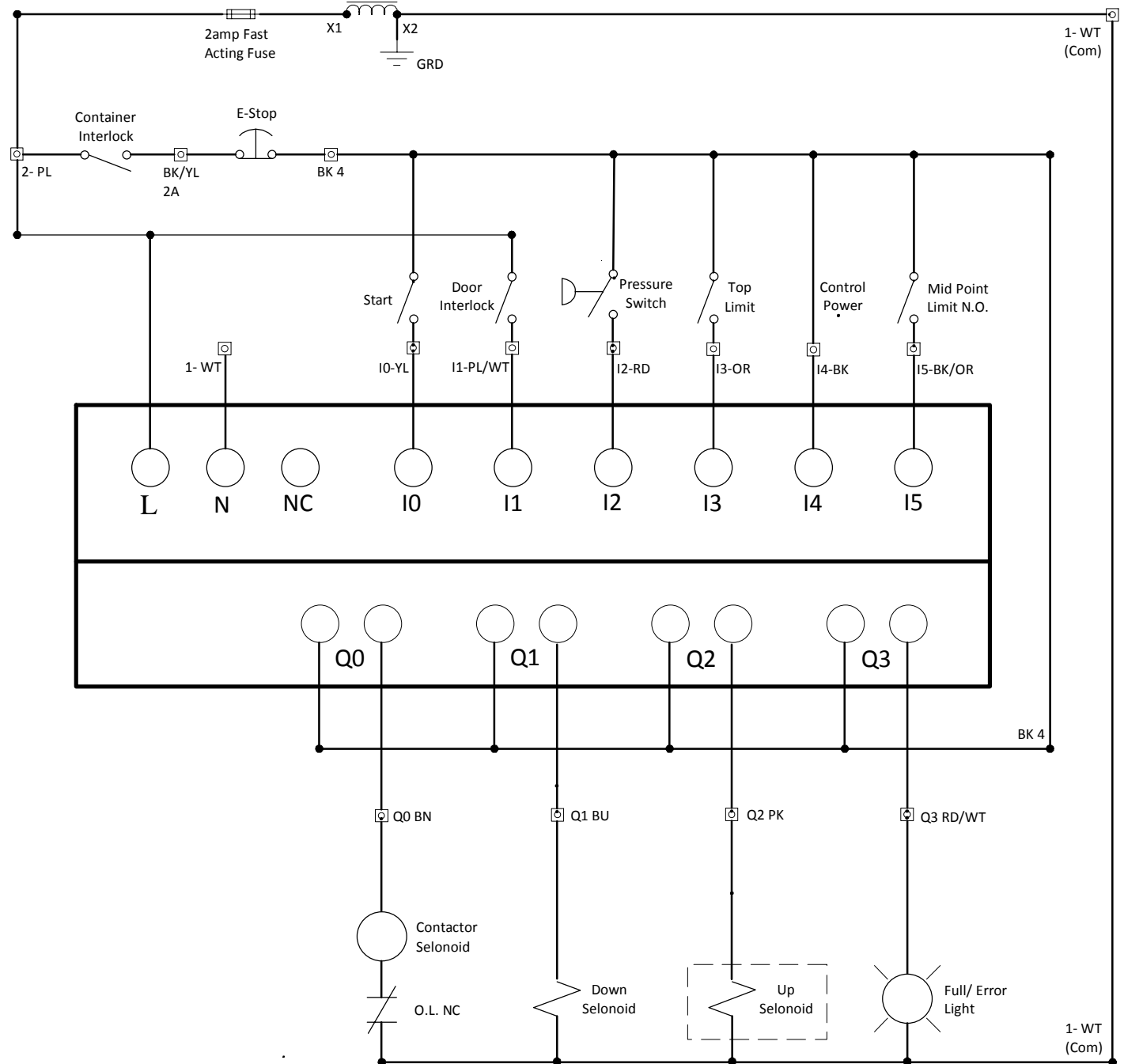
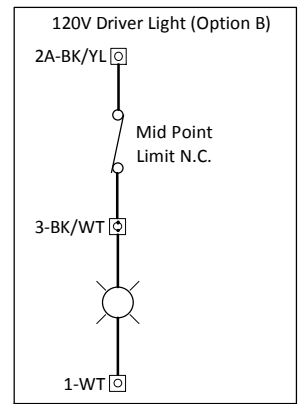
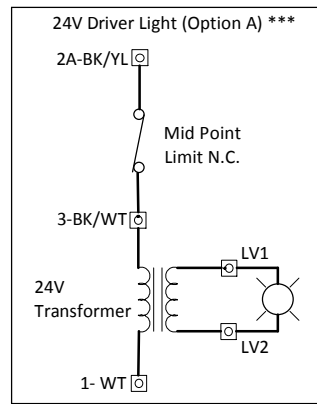
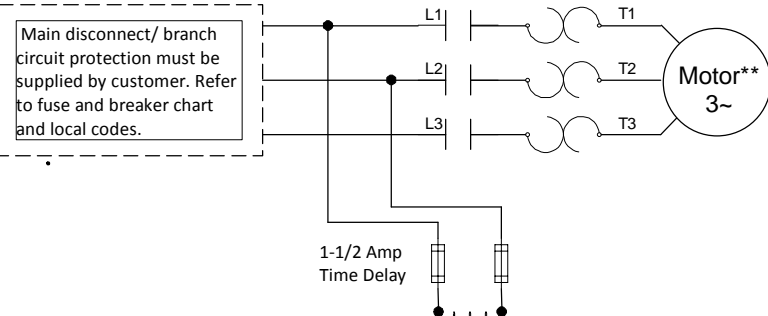
T2- (M:S) Set for 5 secs. Shuts unit down if pressure switch is on too long. Errors.

Please don't change any other timers!

Please visit [www.versa-vip.net](http://www.versa-vip.net) to watch youtube videos!

As always, if you have any problems, please go to [www.versa-vip.net](http://www.versa-vip.net) or call 352-742-4774!

\*\*For single phase jump T2 to L3 on starter, connect motor to T1 and T3.  
 \*\*\*Earlier schematic versions used 2 instead of 2A and did not use Terminal 3.



Description: Versa-VIP V1.3 Wiring. For support go to [www.versa-vip.net](http://www.versa-vip.net) or call 352-742-4774.