



Northwest Oregon Economic Update

Northwest Oregon Works

April 27, 2018

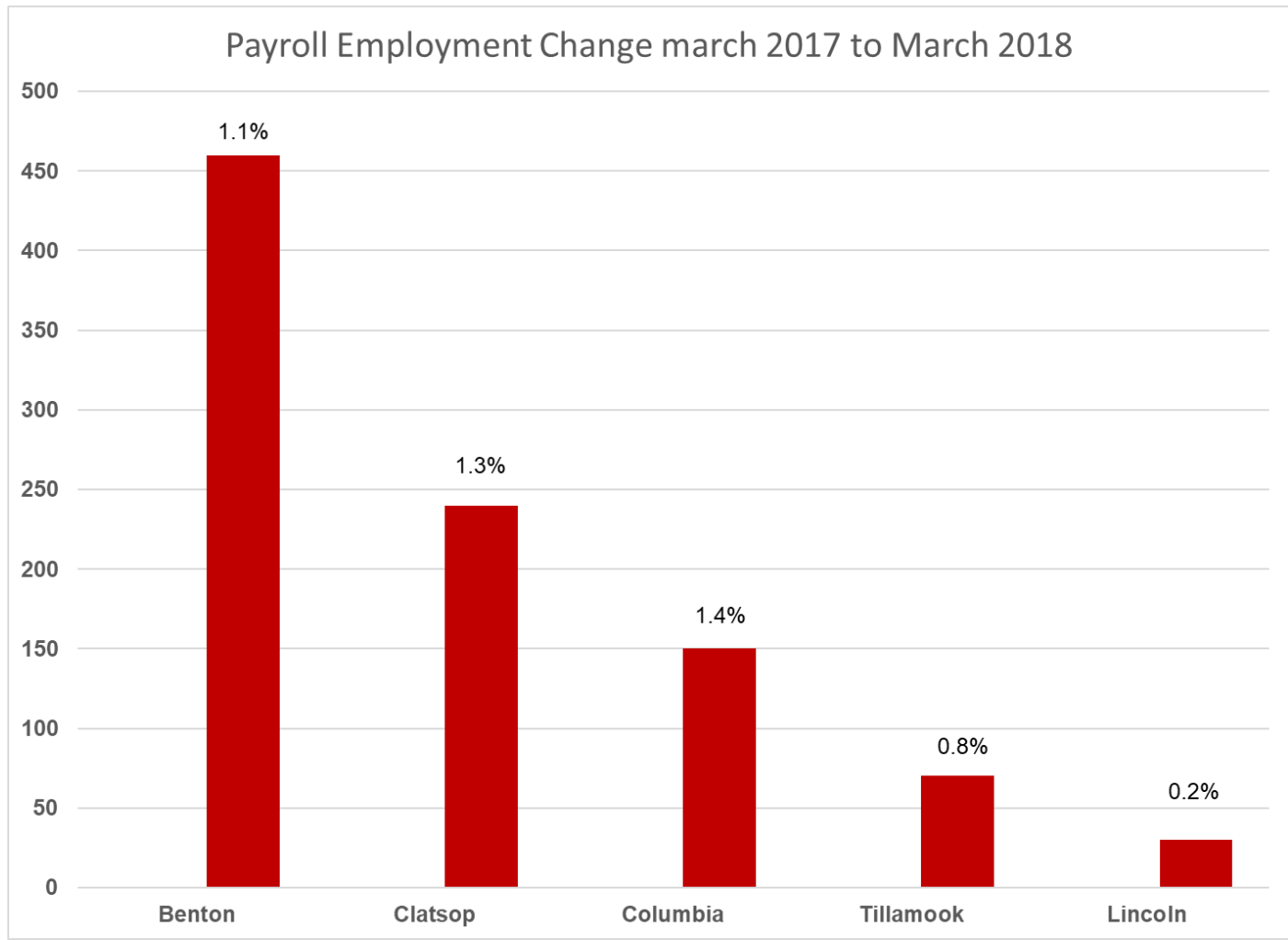
By Erik Knoder

Oregon Employment Department

Workforce and Economic Research Division



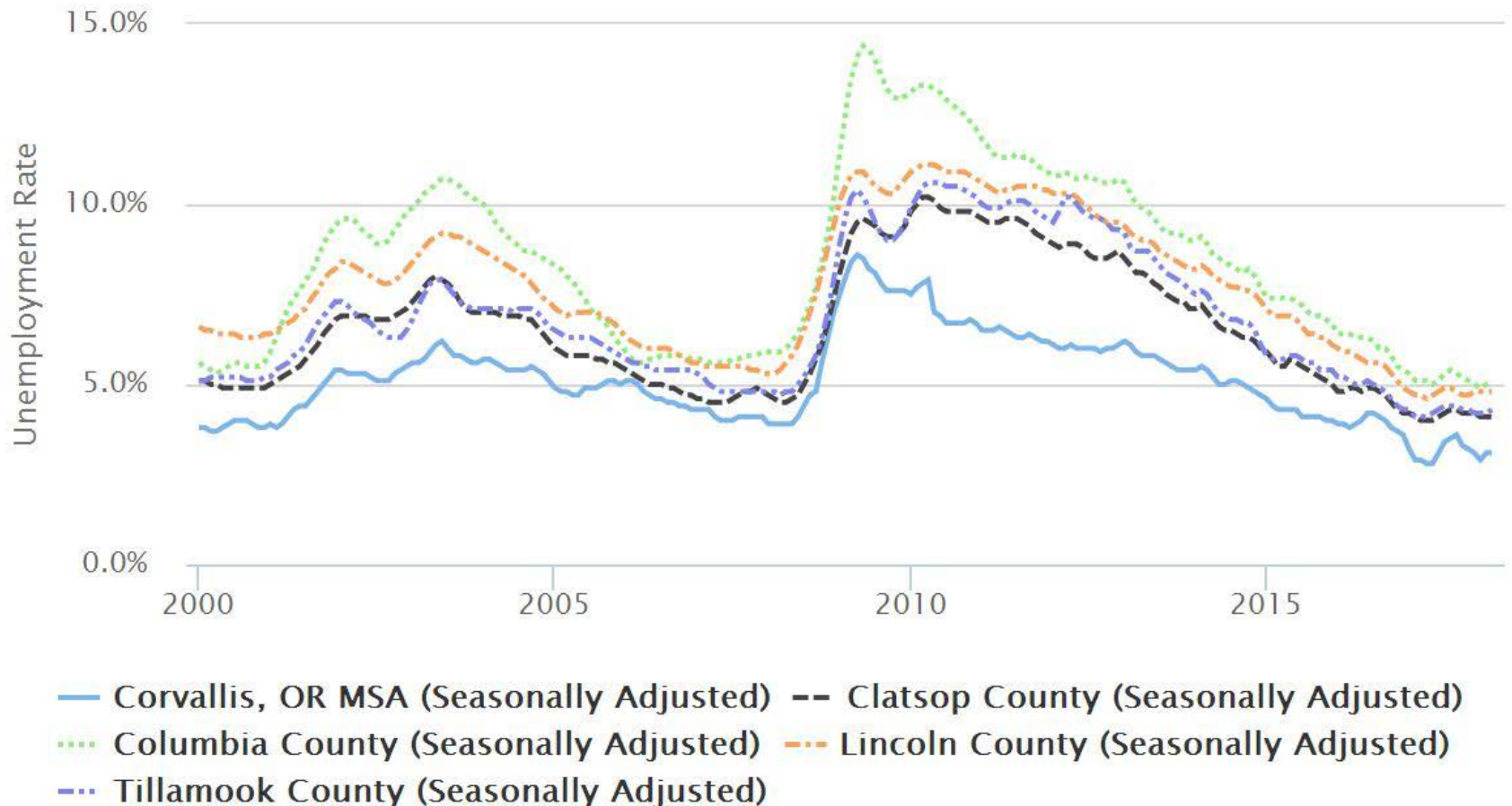
Job growth continues in Benton, Clatsop, and Columbia. Tillamook and Lincoln have slowed the past year.



All counties still under 5%.

Local Area Unemployment Statistics

(Unemployment Rate)



Northwest Oregon has about 2000
current open job listings with OED.

Information-716

Manufacturing-140

Health/social assistance-139.

Retail-92

Accommodations/food service-89

Administrative/waste mgmt.-50

Finance/insurance-39

Construction-38

Focus on Tillamook

Key points for Tillamook County

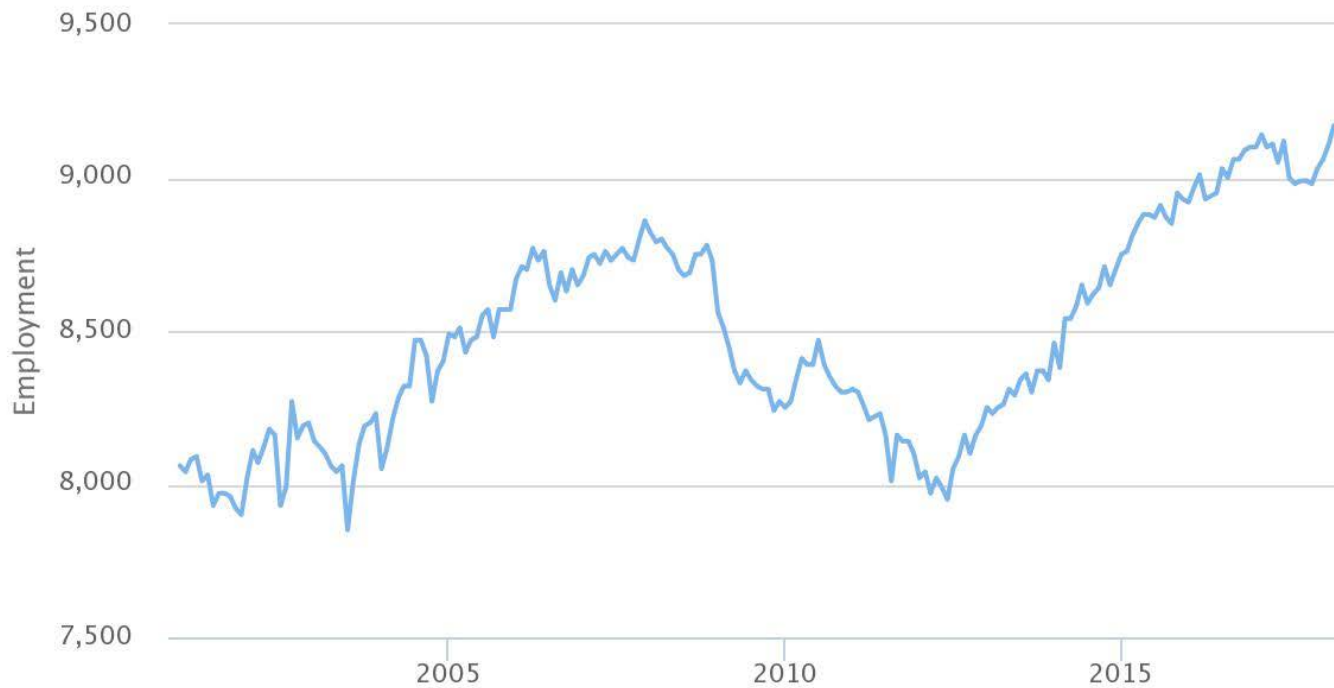
1. Employment has recovered.
2. Job growth has slowed to under one percent.
3. Unemployment remains near record low.
4. Economic indicators become mixed or subdued at slower, full-employment growth.



Tillamook County added 70-100 jobs over the past year (0.8%).

Tillamook County
Total nonfarm employment

(seasonally adjusted)

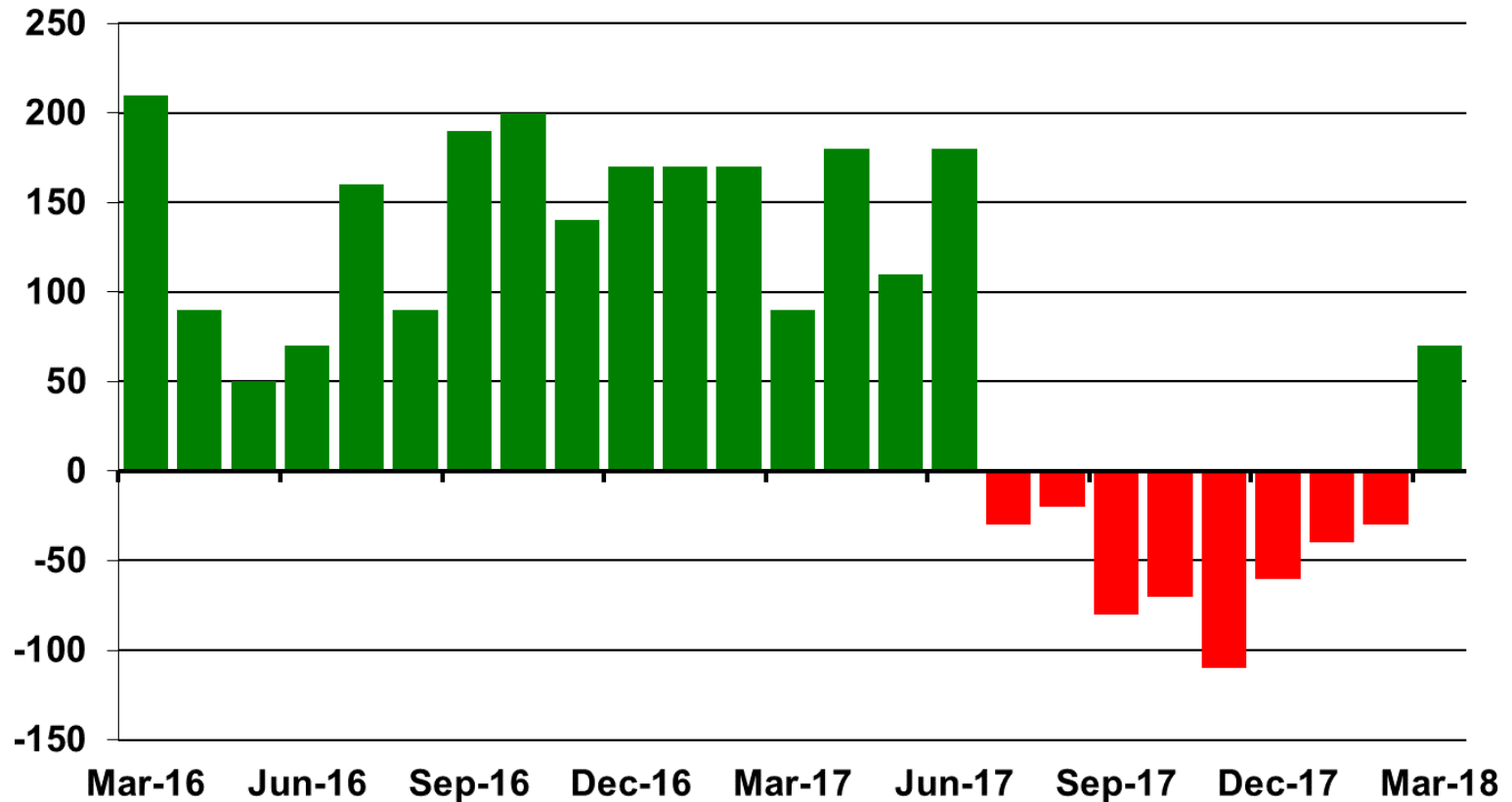


Source: Oregon Employment Department QualityInfo.org

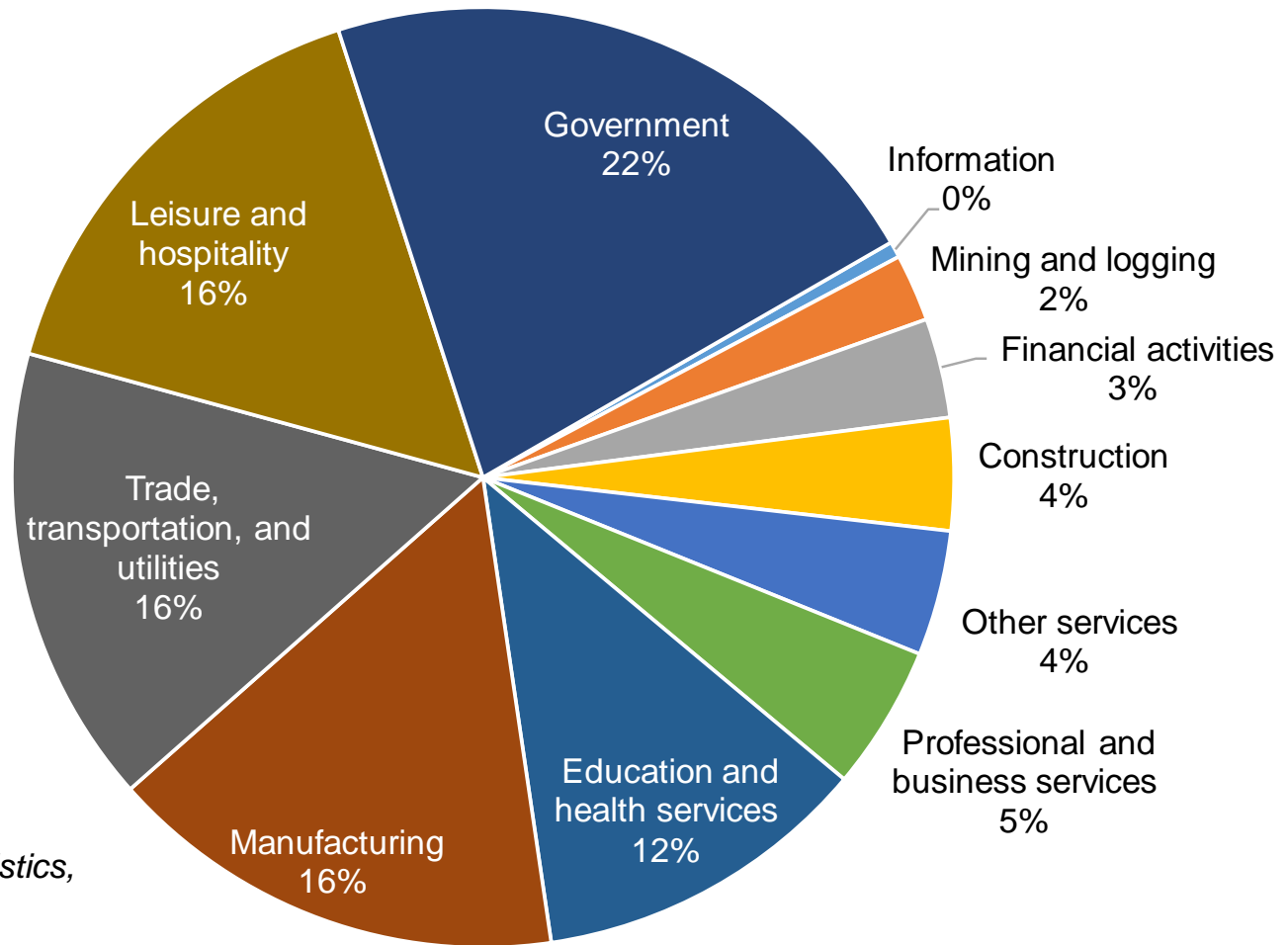


But growth slowed after last summer.

**Tillamook County: Year-to-Year Employment Change
March 2016 to March 2018**



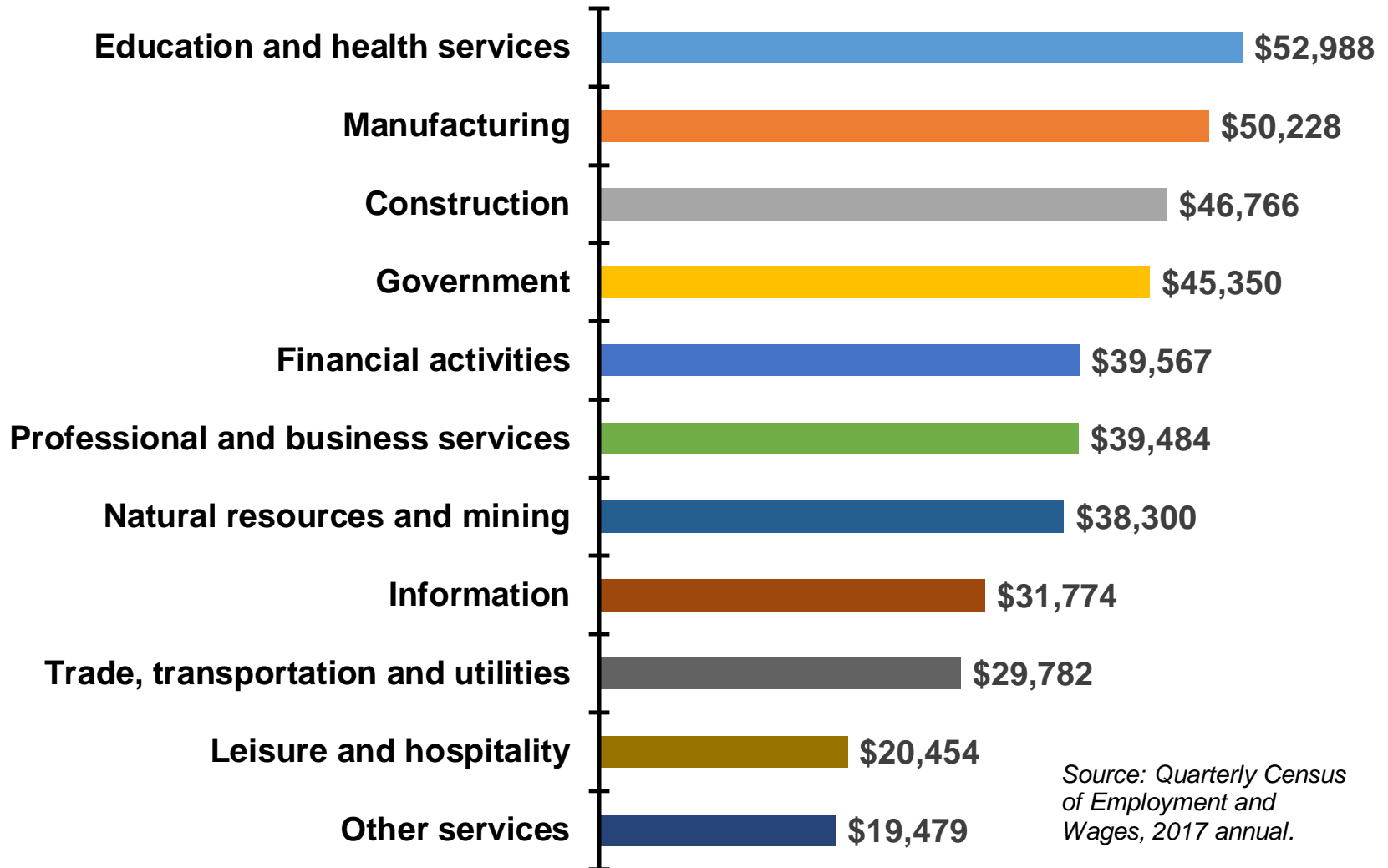
Government, Leisure, and Retail and Manufacturing Dominate County's Employment



Source: *Current Employment Statistics, 2017 annual for Tillamook County.*



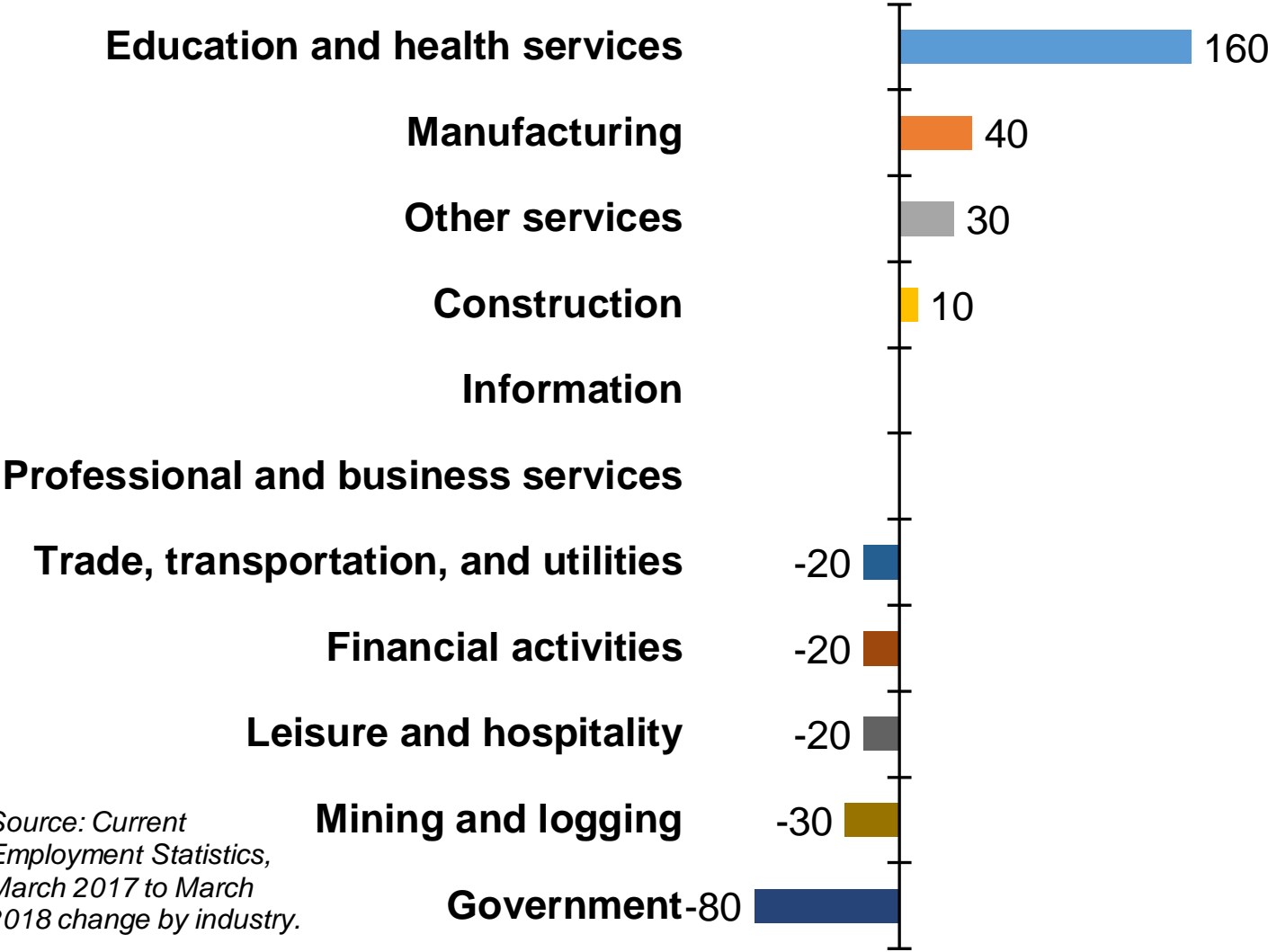
Education and health services, Manufacturing, and Construction Have Highest Average Wages



Source: Quarterly Census of Employment and Wages, 2017 annual.



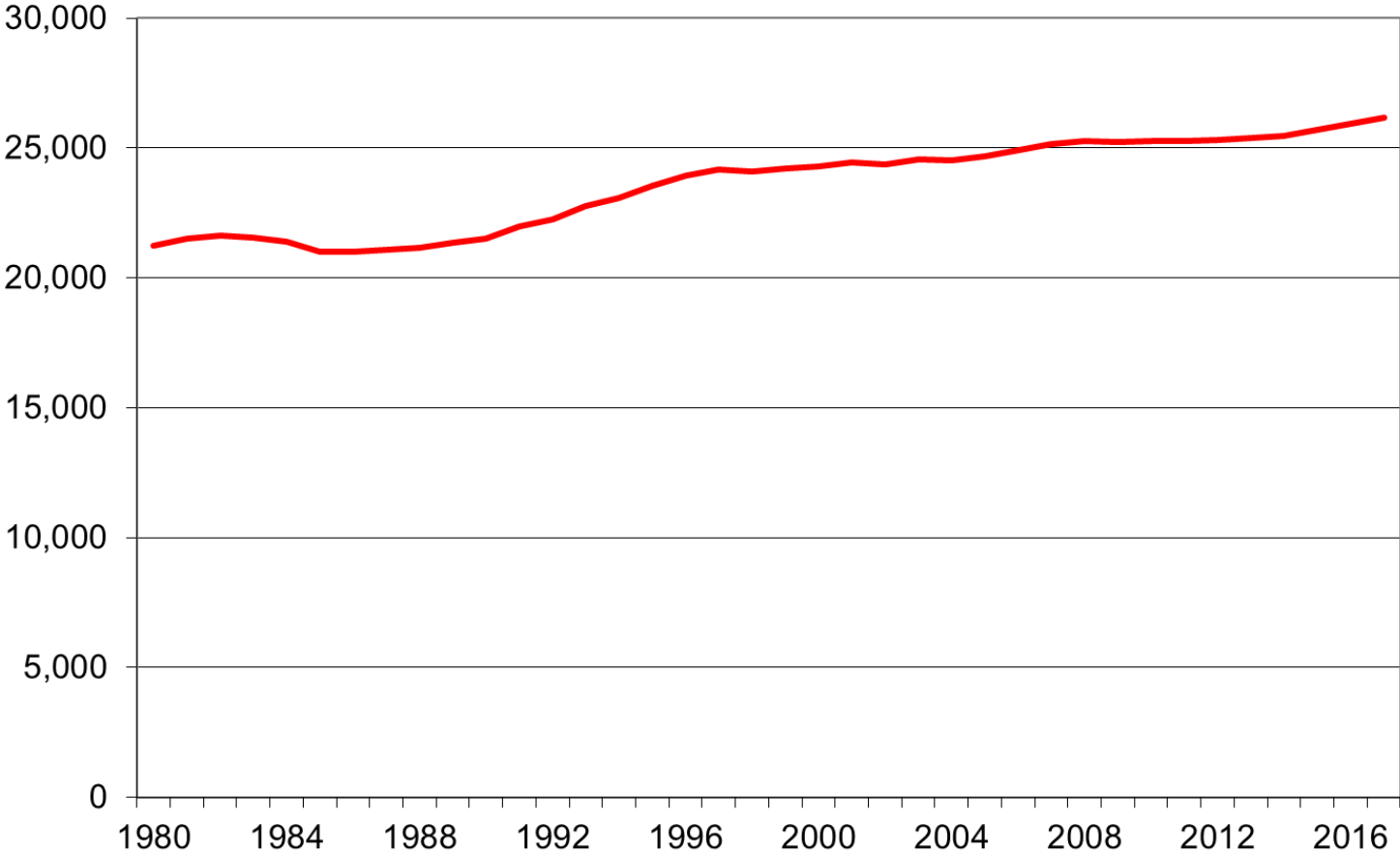
Home care to private sector. Healthcare less than shown.



Source: Current
Employment Statistics,
March 2017 to March
2018 change by industry.

Population growth increased to about 0.9% (+255) last year.

Tillamook County Population



Mixed and subdued indicators

Employment growth is slowing but that also could be affected by labor supply constraints.

Income grew strongly from 2014 to 2016, but travel spending fell by 0.8% in 2016.

The number of employers fell by 3 in 2017.

Average wage up \$1,567 from 2016 to 2017.

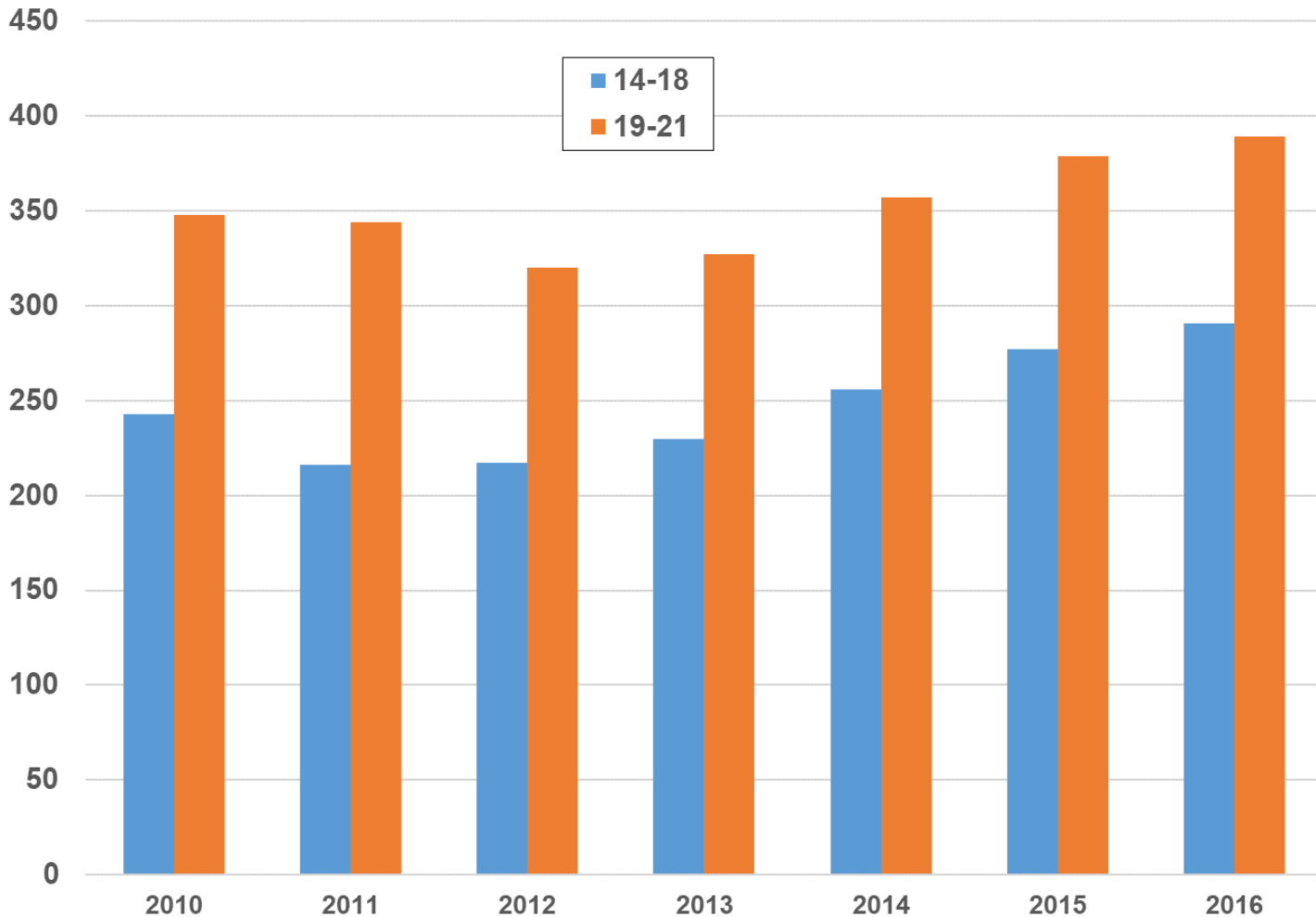
Mixed and subdued indicators -continued-

	2014	2016	2 year change
Personal income	\$941,095,000	\$1,022,627,000	\$81,532,000
Per capita personal income	\$37,140	\$39,117	\$1,977
Farm income	\$ 56,144,000	\$ 29,601,000	-\$26,543,000

Source: BEA

Youth employment is increasing.

Tillamook County Employment by Age Group



Source: U.S. Census Bureau, LEHD

**For more economic information, call :
Erik Knoder, Regional Economist**

Email: Erik.A.Knoder@Oregon.gov

Cell: 541-351-5595

Shawna Sykes, Workforce Analyst/Economist

Email: Shawna.L.Sykes@Oregon.gov

Cell: 503.396.7355

Visit our web site at: www.QualityInfo.org

Get the latest workforce and economic
research delivered to your inbox!

Sign up at our web site under Publications.

Join the conversation:

OregonEmployment.blogspot.com

[Twitter@OrEmployment](https://twitter.com/OrEmployment)

