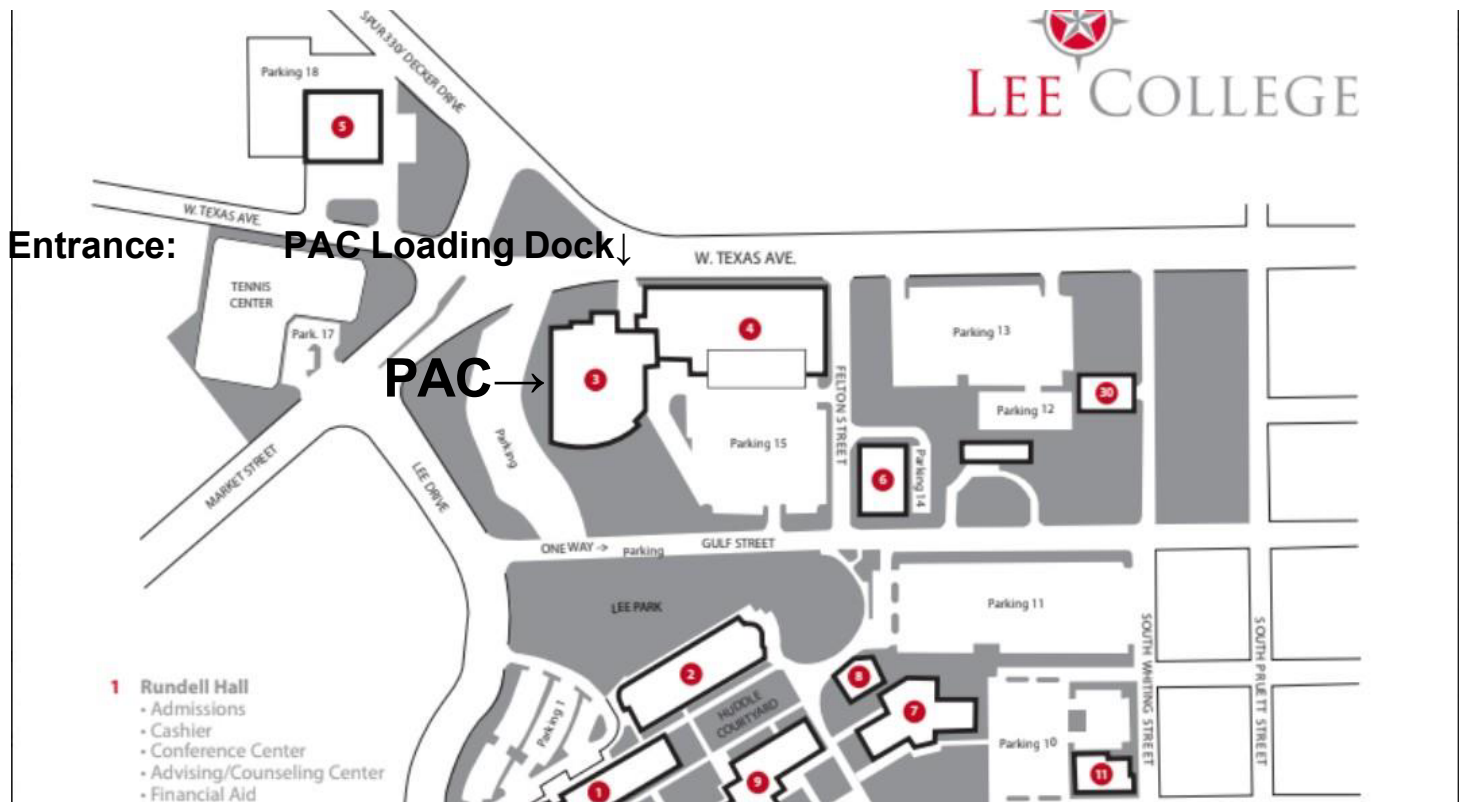


Lee College Campus Map: 805 W. Texas Ave, Baytown, TX 77520 (Loading Dock)

Building 3: PAC

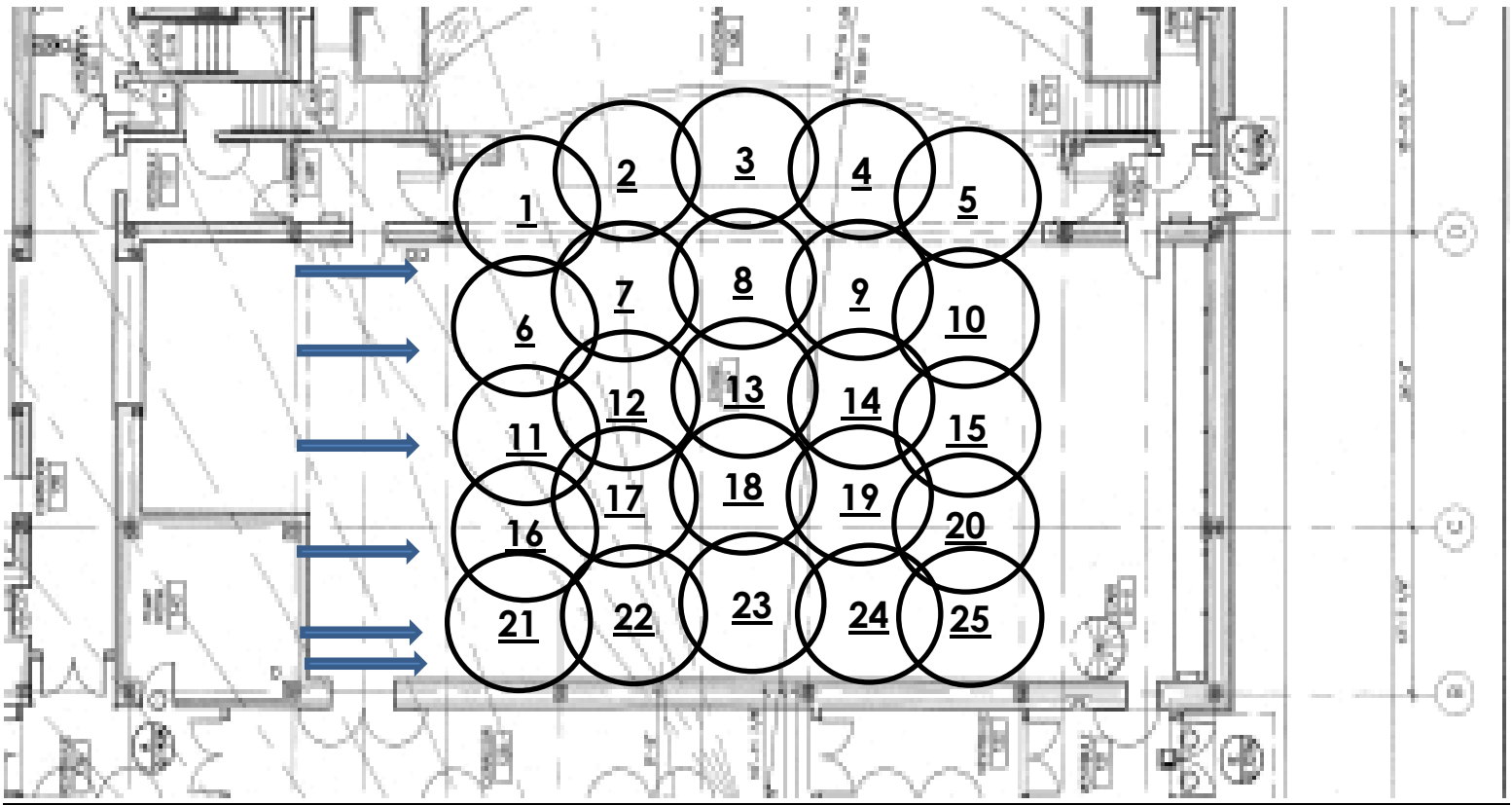
PARKING: Buses may park in **Lot #11** shown on the attached Campus map.

Audience parking is available in **Lot # 15**, or area labeled “**Parking**” alongside **Building #3**.



1. 1st Set of legs is: 10' from the Plaster Line
2. 2nd Set of legs is: is at 18' from Plaster Line (Mid stage traveler)
3. 3rd Set of legs is: 29' from Plaster Line
4. A full stage black curtain at 28'6" does cover the width of the stage, Masking the Cyc, *if you are not using it.*

For clarification's sake the numbered lighting area 1 is in the down stage left corner.



1. The Stage Consists of a 54' proscenium Width, the areas light 48' of that width. There is 36' of depth from plaster line to back wall. The apron in front of the grand drape is 13' deep at center. You may set up with the curtain open.

2. Lighting will be 5 areas across from SL to SR. There will be 5 rows. Area 1 is DSL.

3. There is a cyclorama at 33'6" from plaster line. The downstage arrow is plaster line, next is leg 1, then leg 2/ Mid-stage traveler, Then Leg 3, Then full stage black, Then Cyclorama

4. If you wish to play a more downstage area the mid-stage traveler is at 18' from plaster line.

5. There will also be a split black curtain hung at 28'6" from plaster line. Can be raised and lowered from fly gallery.

6. 100 square foot set storage will be in the black box area across a hall out the stage left wing. "On Deck" play will be staged in the black box with their set. Once sound door to the main Hall is closed "On Deck" school may then move up and set up just behind that door if they wish.

7. Dressing and Makeup rooms will be assigned throughout the building. Mirrors and costume rack may not be available Please Bring your own.