

WILDLIFE OF MIRROR LAKE CAMPGROUND

BONNER COUNTY, IDAHO

Click on names for web links to descriptions



Whitetail Deer *Odocoileus virginianus* (Large tail white underneath, no black tip, erect when startled, antlers branch up from main beam, numerous in populated areas near lake)



Moose *Alces alces* (Large, ungainly, dark brown body, gray legs, big overhanging snout, distinctive “palmate” antler found in forest, feeds in wetlands, known to swim across lake, sometimes wanders through campground)



North American Beaver *Castor canadensis* (Tail naked, scaly and paddle-shaped, large front teeth, hind feet webbed, south end of lake)



Gordon Robertson



USFWS



Tim Vickers



Tim Vickers

Muskrat *Ondatra zibethicus* (Tail naked, scaly, black, flattened from side to side, fur brown, belly silvery)

North American River Otter *Lontra canadensis* (Brown above, silvery below, tail hairy, thick at base tapering toward tip, feet webbed, small ears, broad snout)



Raccoon *Procyon lotor* (Black face mask, rings on tail)

Red Squirrel *Tamiasciurus hudsonicus* (Ear tufts, white belly, noisy)



Least Chipmunk *Tamias minimus* (Small, stripes extend to base of tail, ears tawny in front)

Deer Mouse *Peromyscus maniculatus* (White feet and belly, tail dark above white below and as long as rest of body, nocturnal, nest in burrows, stumps, buildings, RVs)



Osprey *Pandion haliaetus* (White breast and throat, eye stripe, frequently seen fishing in Mirror Lake, high-pitched whistle **calls**)



Jo Leach



Bill Logan

Bald Eagle *Haliaeetus leucocephalus* (Adult head and tail white, young similar to young Golden Eagle, occasional at Mirror Lake)



Chuck Abbe



USFS



Golden Eagle *Aquila chrysaetos* (Dark head and breast, rare at Mirror Lake) **Turkey Vulture** *Cathartes aura* (Head is red and naked)



Wild turkey *Meleagris gallopavo* (Adult male has hanging “beard” on breast hen doesn’t, gobble **call**)

Ruffed Grouse *Bonasa umbellus* (Crest on head, dark neck ruff more prominent in males)



Common Raven *Corvus corax* (Larger than crow, heavier bill, back of tail triangular and “V”- shaped in flight)

American Crow *Corvus brachyrhynchos* (Tail square in back)



Redwing Blackbird *Agelaius phoeniceus* (Nests in cattail marsh at campground, high-pitched “ricochet-like” **call**)



Belted Kingfisher *Ceryle alcyon*
(Female with rufous belt on chest)



Steller's Jay *Cyanocitta stelleri* (A camp robber)



American Robin
Turdus migratorius



Pileated Woodpecker
Dryocopus pileatus (Almost as large as a crow, fast *wuk* series *call*)



Red-shafted Flicker *Colaptes auratus* female
(A variety of Northern Flicker with underside of wings in flight salmon colored, a woodpecker, *kyeer* *call*)



Cedar Waxwing *Bombicilla cedrorum*



Tree swallow *Tachycineta bicolor* (White throat and breast, white doesn't extend above eye, back blue-black, immature grayish, catch insects in flight)



Violet Green Swallow *Tachycineta thalassina* (White extends behind and above eye, back green-black)





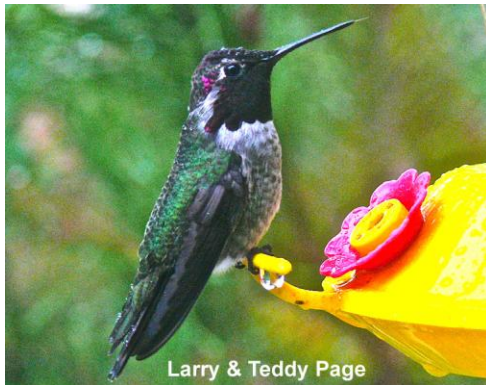
Rufous Hummingbird *Selasphorus rufus* (Most common, adult male perched, females in flight, female on nest, chicks in nest)



Calliope Hummingbird *Stellula calliope*



Anna's Hummingbird *Calypte anna*



Black-chinned Hummingbird *Archilochus alexandri*



Song Sparrow *Melospiza melodia* (Distinctive breast spot may be lacking in immature, melodious song)



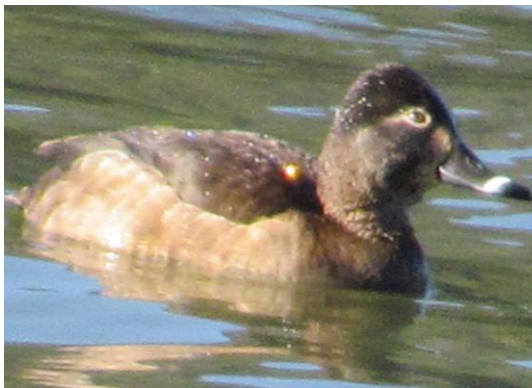
Great Blue Heron *Ardea herodias*



Canada goose *Branta canadensis* (Loud honkers, walk around campground and docks, leave droppings everywhere)



Mallard *Anas platyrhynchos* (Male, female)



Ring-necked Duck *Aythya collaris* (White band around beak, male, female)



Bufflehead *Bucephala albeola* (Male with large white patch behind eye, female has smaller patch behind and below eye)



Common Goldeneye *Bucephala clangula* (Male with round white patch in front of eye, female's head reddish brown with dark beak)



Red-necked Grebe *Podiceps grisegena* (Builds floating nest in marsh, loud squawking call)

Barred Owl *Strix varia*

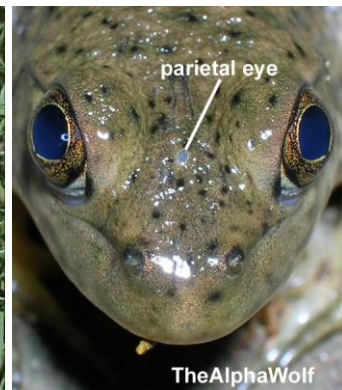


Western Painted Turtle *Chrysemys picta bellii* (Orange-red underside, aquatic, often seen “sunning” on logs and rocks, treks up driveway from lake to lay eggs in gravel area)

Garter Snake *Thamnophis* sp.



Northern Pacific Tree Frog *Pseudacris regilla* (Small frog, less than 2”, black or dark brown eye stripe from nose across eye to shoulder, color variable green to gray or brown, pads on toe-tips, numerous in marsh, responsible for the nighttime chorus)

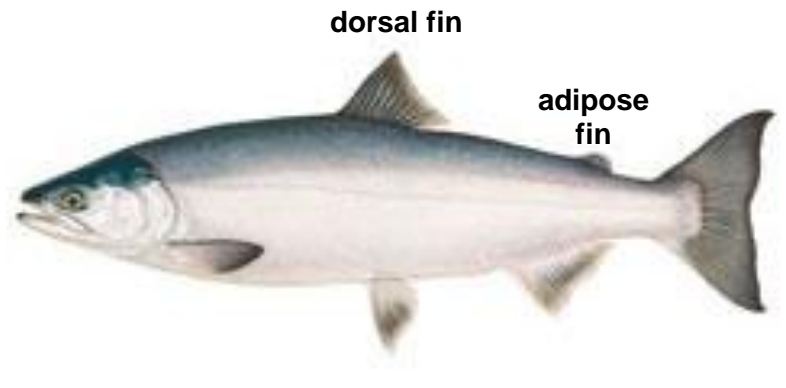


Bullfrog *Lithobates catesbeianus* (Largest frog around 3-6", large eardrum behind eye, greenish above light below, **sound** is a loud deep bass "garump", very large tadpole, juvenile has "parietal eye" atop head, INTRODUCED)



Long-toed Salamander *Ambystoma macrodactylum* (Long outer fourth toe on the hind limbs, mottled black, brown, and yellow with small whitish spots, adult usually has irregular yellow dorsal stripe)

GAME FISH For more go to Idaho Fish & Game web sites "[Game Fish Identification](#)" and "[Fishing Rules](#)", illustrations by © Joseph Tomelleri.



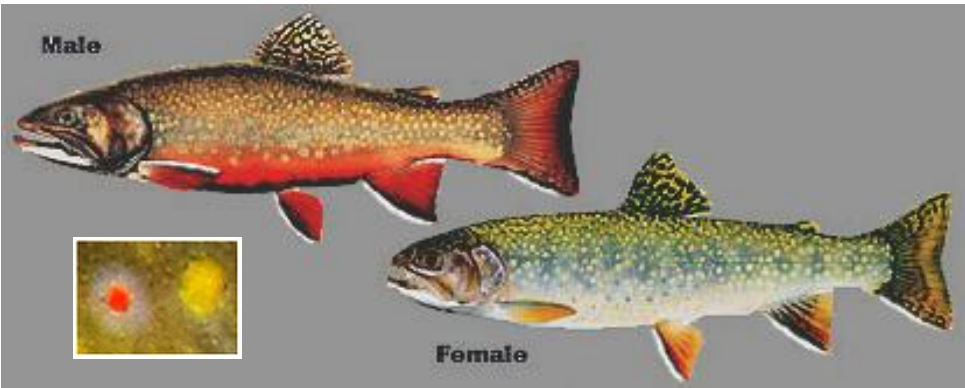
Kokanee *Oncorhynchus nerka* (Small, landlocked **Sockeye Salmon** , greenish-blue back with faint speckling and few if any spots, sides & belly silvery, no spots on dorsal fin or tail. Spawning color red, with greenish head in Sept.-Dec., stocked in Mirror Lake by Fish & Game Dept)



Rainbow Trout *Oncorhynchus mykiss* (Usually has pinkish side streak but not always, back greenish-blue, belly white, spots on back, sides, head, dorsal fin and tail, stocked in Mirror Lake stocked in Mirror Lake by Idaho Fish & Game Dept.)



Brook Trout *Salvelinus fontinalis* (Upper body and dorsal fin with mottled or worm-like markings, sides with pale spots and red spots with bluish halos, white leading edge on lower fins and lower tail, tail square or slightly forked, non-native and not stocked)



Round-backed slug Arionidae, probably *Arion* sp. (Long coarse tubercles on side & back, mucus covering body, breathing hole on right side)



Bumble Bee *Bombus* sp. (Furry body, larger than honey bee)



Western Yellowjacket *Vespula pensylvanica* (Nests underground or in hollow trees and logs, stinging pest)



Bald-faced Hornet *Dolichovespula maculata* (Builds above-ground paper nests in trees or bushes and under eaves, stinging pest)



Angle-wing Butterfly *Polygonia* sp. (Outer wing margins irregularly toothed, unique pattern of spots on top, underside grayish)

This picture guide will help you recognize animals you are most likely to see in the vicinity of Mirror Lake Campground.

You may download it at <http://www.campgroundcritters.com>

To learn more about wildlife in the *Idaho Panhandle National Forests* go to http://www.fs.usda.gov/detail/ipnf/learning/?cid=fsm9_019205.

For details on Idaho Wildlife statewide download the "[Atlas of Idaho's Wildlife](http://imnh.isu.edu/digitalatlas/bio/atlswf.pdf)" at <http://imnh.isu.edu/digitalatlas/bio/atlswf.pdf>.

Certain public domain and [Wikimedia Commons](#) images are used herein under conditions of the [Creative Commons Attribution-Share Alike 3.0 Unported, 2.5 Generic, 2.0 Generic and 1.0 Generic](#) licenses and [GNU Free Documentation License](#)

Except where otherwise credited, photographs are by
Tom Bright, Rex & Peg Lavoie and Jennifer Wiltrout

April 2015