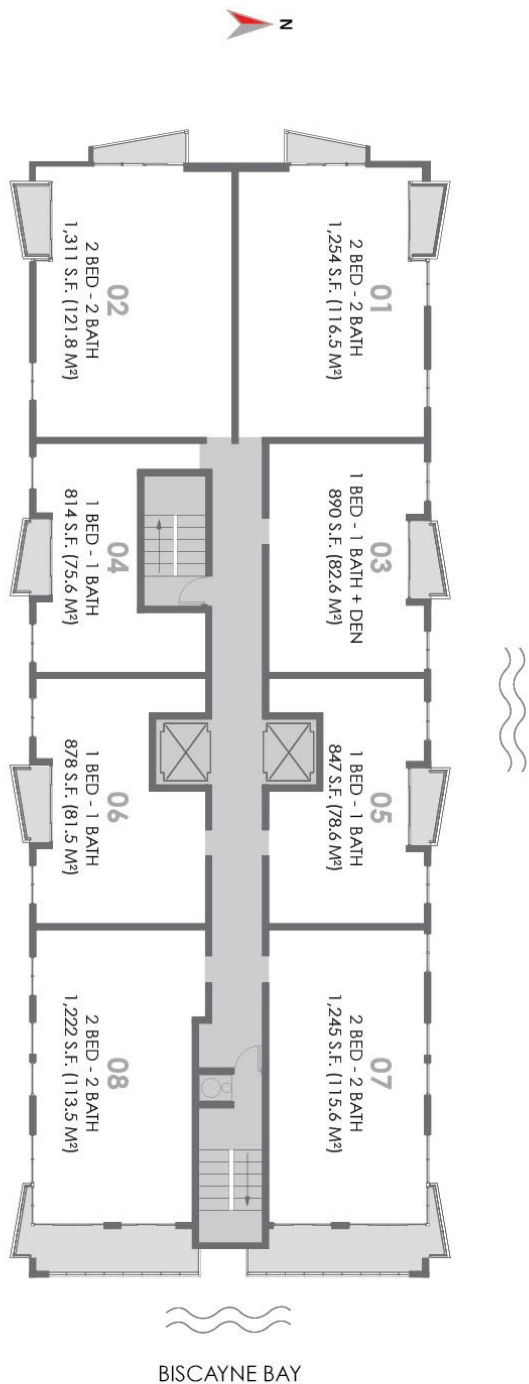


KEYPLAN



THE CRIMSON
WATERFRONT RESIDENCES

Stated dimensions are measured to the exterior boundaries of the exterior walls and the centerline of interior demising walls and in fact vary from the dimensions that would be determined by using the description and definition of the "unit" set forth in the declaration. All floor plans and development plans are approximate and subject to change.

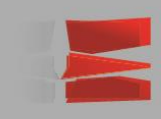
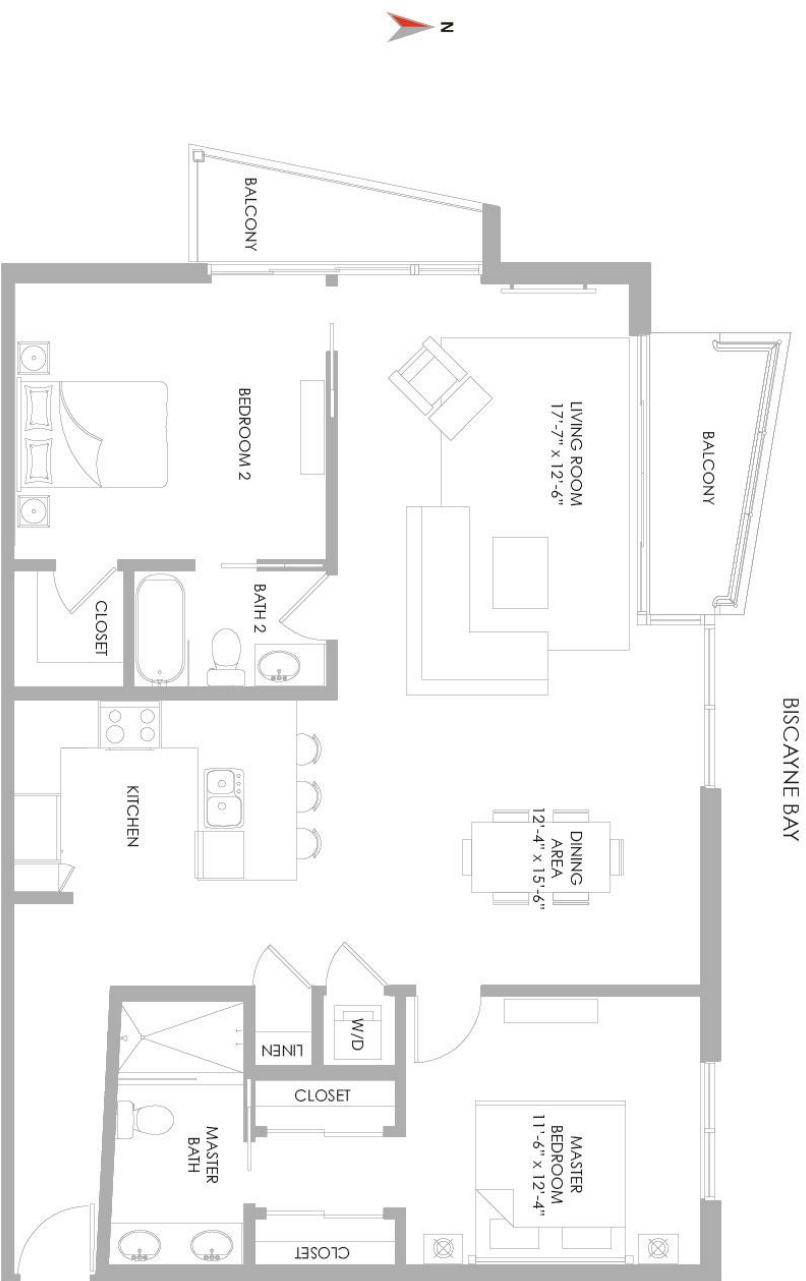
WWW.CRIMSONMIAMI.COM



RESIDENCE 01

2 BEDROOMS / 2 BATHROOMS

A/C AREA	1,254 S.F. (116.5 M ²)
BALCONIES	100 S.F. (9.3 M ²)
TOTAL	1,354 S.F. (125.8 M ²)



THE CRIMSON WATERFRONT RESIDENCES

Stated dimensions are measured to the exterior boundaries of the exterior walls and the centerline of interior demising walls and in fact vary from the dimensions that would be determined by using the description and definition of the "unit" set forth in the declaration. All floor plans and development plans are approximate and subject to change.



FLOORS
9 TO 18



WWW.CRIMSONMIAMI.COM

RESIDENCE
03

1 BEDROOM / 1 BATHROOM + DEN

BISCAYNE BAY

A/C AREA	890 S.F. (82.6 M ²)
BALCONIES	60 S.F. (5.5 M ²)
TOTAL	950 S.F. (88.1 M ²)

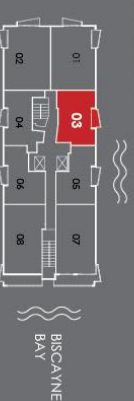


THE CRIMSON
WATERFRONT RESIDENCES

Stated dimensions are measured to the exterior boundaries of the exterior walls and the centerline of interior demising walls and in fact vary from the dimensions that would be determined by using the description and definition of the "unit" set forth in the declaration. All floor plans and development plans are approximate and subject to change.



FLOORS
8 TO 18



WWW.CRIMSONMIAMI.COM

RESIDENCE
05

1 BEDROOM / 1 BATHROOM

A/C AREA	847 S.F. (78.6 M ²)
BALCONIES	60 S.F. (5.5 M ²)
TOTAL	907 S.F. (84.1 M ²)



THE CRIMSON
WATERFRONT RESIDENCES

Stated dimensions are measured to the exterior boundaries of the exterior walls and the centerline of interior demising walls and in fact vary from the dimensions that would be determined by using the description and definition of the "unit" set forth in the declaration. All floor plans and development plans are approximate and subject to change.



FLOORS
8 TO 18



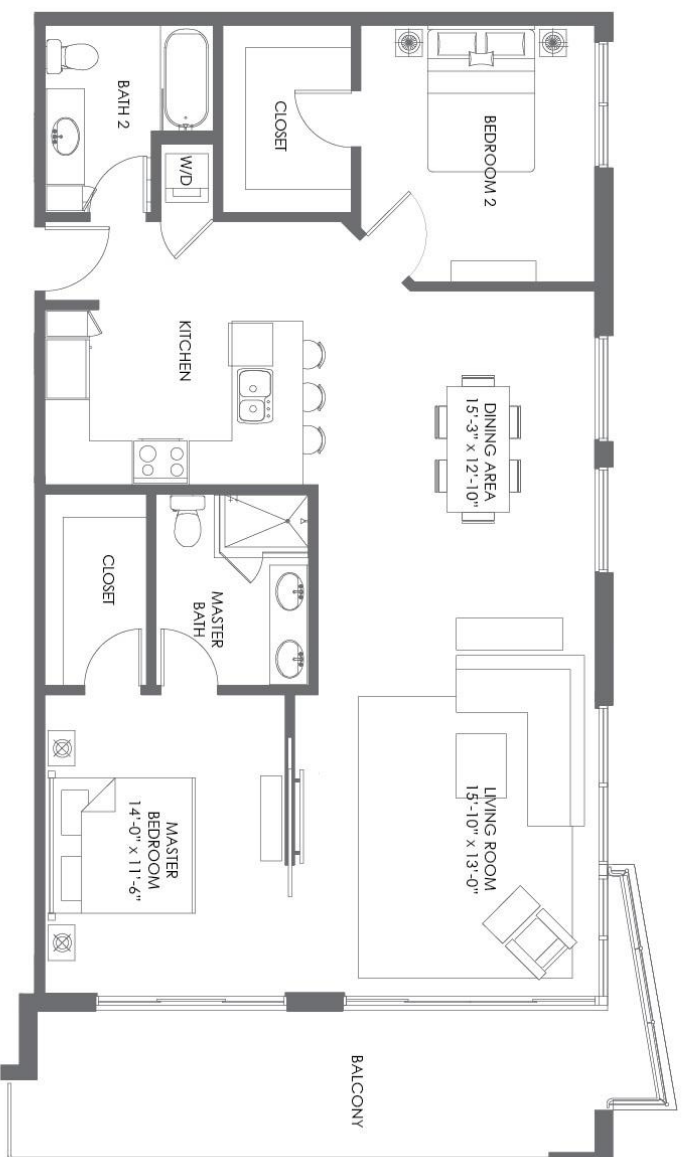
WWW.CRIMSONMIAMI.COM

RESIDENCE
07

2 BEDROOMS / 2 BATHROOMS

BISCAYNE BAY

A/C AREA	1,245 S.F. (115.6 M ²)
BALCONIES	221 S.F. (20.5 M ²)
TOTAL	1,466 S.F. (136 M ²)



THE CRIMSON
WATERFRONT RESIDENCES

Stated dimensions are measured to the exterior boundaries of the exterior walls and the centerline of interior demising walls and in fact vary from the dimensions that would be determined by using the description and definition of the "unit" set forth in the declaration. All floor plans and development plans are approximate and subject to change.



FLOORS
8 TO 18



BISCAYNE
BAY

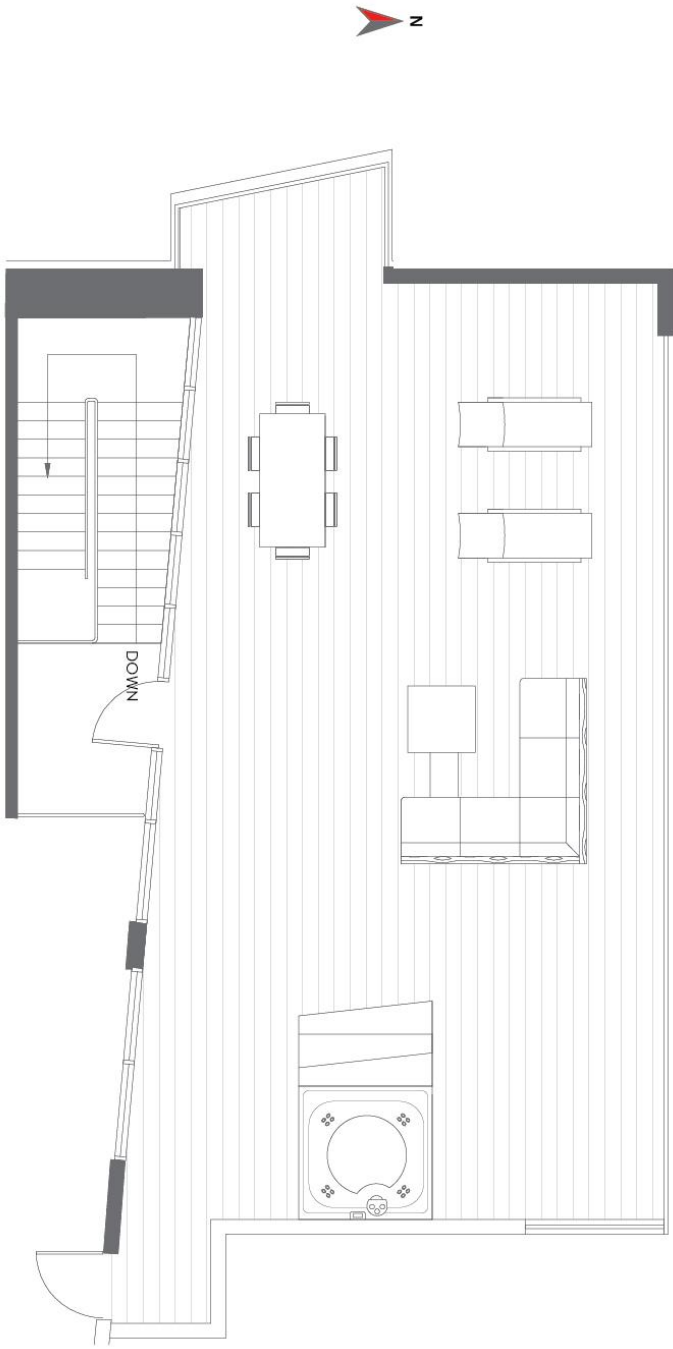
WWW.CRIMSONMIAMI.COM

PENTHOUSE
01

ROOF TERRACE

BISCAYNE BAY

A/C AREA	1,625 S.F. (150.9 M ²)
BALCONIES	100 S.F. (9.2 M ²)
ROOF TERRACE	983 S.F. (91.3 M ²)
TOTAL	2,708 S.F. (251.4 M ²)

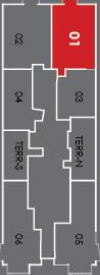


THE CRIMSON
WATERFRONT RESIDENCES

Stated dimensions are measured to the exterior boundaries of the exterior walls and the centerline of interior demising walls and in fact vary from the dimensions that would be determined by using the description and definition of the "unit" set forth in the declaration. All floor plans and development plans are approximate and subject to change.



PENTHOUSES
20TH FLOOR



BISCAYNE
BAY

WWW.CRIMSONMIAMI.COM