

Appendix 6. Gas Infrastructure Serving Generation in IESO

Table of Contents

TransCanada Pipe Lines Limited..... 1
Vector Pipeline (Enbridge / DTE Energy Company) 3
Union Gas Limited (Spectra Energy) 4
Enbridge Gas Distribution 6

TransCanada Pipe Lines LimitedCapacity: 6,573 MMcf/d (summer) / 6,862 MMcf/d (winter)¹**Figure A6-1. TransCanada Facilities in Ontario****Table A6-1. IESO Generators Directly Connected to TransCanada**

Generator	Capacity (MW)
Nipigon	42.4
Tunis	60.0

Table A6-2. TransCanada Compressor Stations in IESO
(sorted West to East)

Name	Location
Station 45	Falcon Lake, MB
Station 49	Kenora, ON
Station 52	Vermilion Bay, ON
Station 55	Dryden, ON
Station 58	Ignace, ON
Station 60	Martin, ON
Station 62	Upsala, ON

¹ The mainline flow-in capacity at Empress in Alberta. Source: <http://www.transcanada.com/customerexpress/2859.html>

Name	Location
Station 68 (south)	Thunder Bay, ON
Station 69 (north)	Eaglehead, ON
Station 75	Nipigon, ON
Station 77	Jellicoe, ON
Station 80	Geraldton, ON
Station 84	Klotzlake, ON
Station 86	Hearst, ON
Station 88	Calstock, ON
Station 92	Mattice, ON
Station 95	Kapuskasing, ON
Station 99	Smooth Rock Falls, ON
Station 102	Potter, ON
Station 105	Ramore, ON
Station 107	Swastika, ON
Station 110	Haileybury, ON
Station 112	Marten River, ON
Station 116	North Bay, ON
Station 119	Sundridge, ON
Station 123	Bracebridge, ON
Station 127	Barrie, ON
Station 130	Maple, ON
Station 1301	Kirkwall, ON
Station 209	Ancaster, ON
Station 211	Lincoln, ON
Station 1703	Douglastown, ON
Station 134 (south)	Bowmanville, ON
Station 136 (south)	Cobourg, ON
Station 1206 (north)	Deux Rivieres, ON
Station 139 (south)	Belleville, ON
Station 1211 (north)	Pembroke, ON
Station 142 (south)	Kingston, ON
Station 1217 (north)	Stittsville, ON
Station 144 (south)	Brockville, ON
Station 1401	Iroquois, ON
Station 147	Cornwall, ON
Station 148	Les Cedres, ON
Station 802	Candiac, ON

Vector Pipeline (Enbridge / DTE Energy Company)

Vector operates approximately 15 miles of pipeline in Ontario, connecting to the Dawn hub.

Figure A6-2. Vector Facilities in Ontario

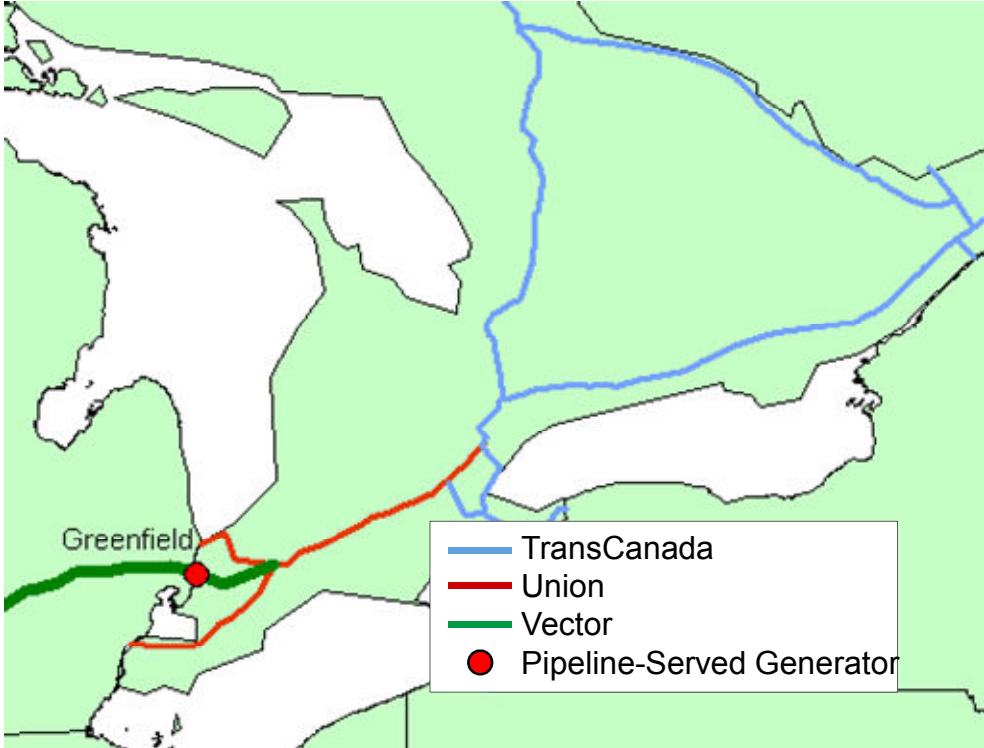


Table A6-3. IESO Generators Directly Connected to Vector

Generator	Capacity (MW)
Greenfield	1,153.0

Union Gas Limited (Spectra Energy)

Capacity: 4,620,000 GJ/d (4,379 MDth/d)²

Figure A6-3. Union Facilities



² Transport capacity from Dawn to Parkway. <http://www.uniongas.com/storage-and-transportation/informational-postings/operational-available-transport-capacity>

Table A6-4. IESO Generators Served by Union

Generator	Capacity (MW)
Brighton Beach	580.0
Cardinal	184.0
Cochrane	46.5
Dow Chemical	100.0
East Windsor	100.0
Halton Hills	757.0
Iroquois Falls	131.0
Kapuskasing	60.4
Kingston	140.0
Kirkland	149.0
Lake Superior	120.1
Lennox	2100.0
Maitland	50.0
North Bay	60.4
Sarnia	510.0
St. Clair	678.0
West Windsor	128.0
Windsor	79.0

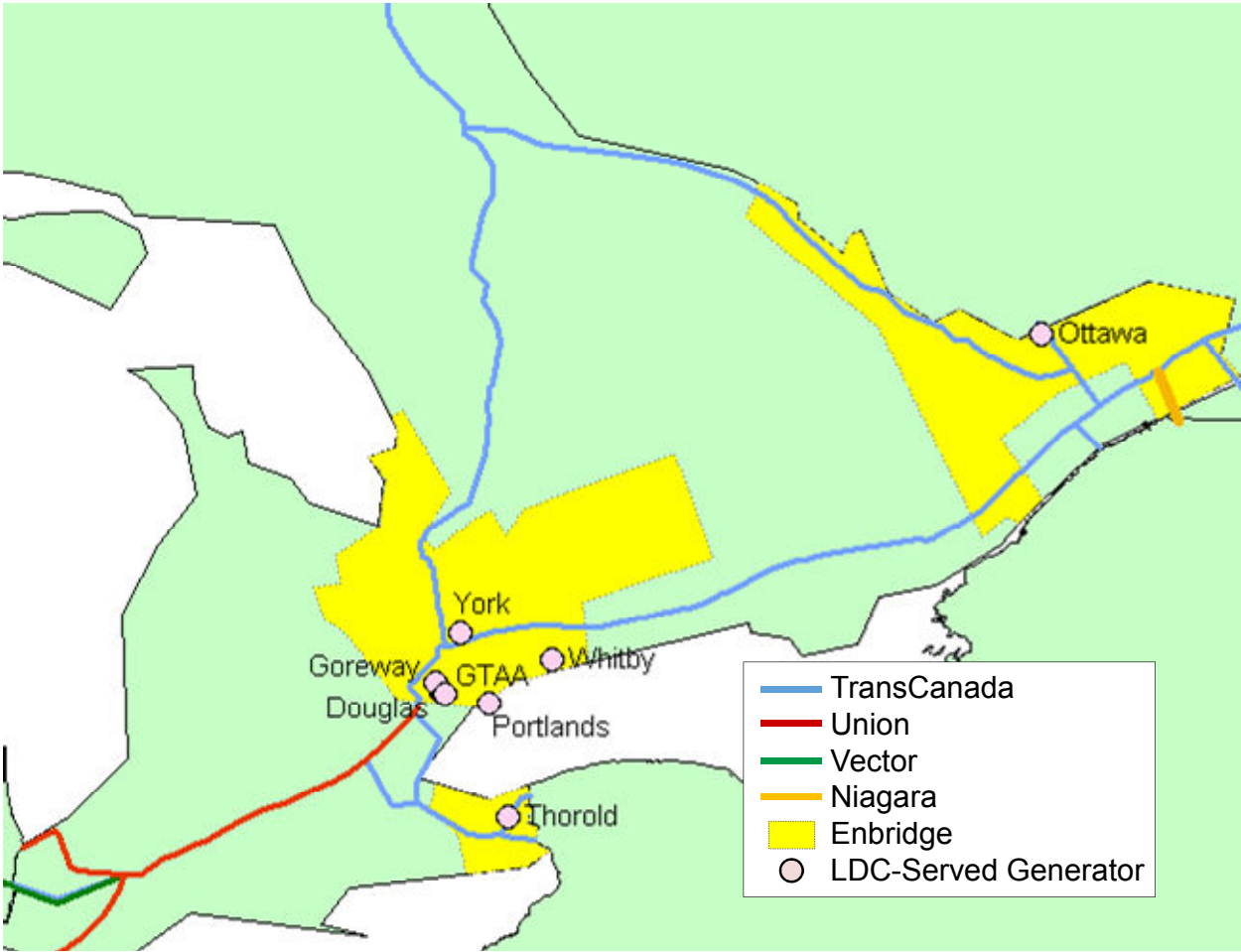
Table A6-5. Union Compressor Stations in IESO
(sorted West to East)

Name	Location
Lobo	Lobo, ON
Bright	Bright, ON

Enbridge Gas Distribution

Enbridge operates a gas distribution network in southern Ontario. Enbridge’s subsidiary Niagara Gas pipeline can deliver up to 41 MDth/d of gas to upstate New York from an interconnection with TransCanada at Cornwall.³

Figure A6-4. Enbridge Facilities



³ St. Lawrence Gas, Niagara Gas’s sole firm shipper, reported in its 2012-13 Winter Supply Review filing that it holds 41 MDth/d of transportation capacity.

Table A6-6. IESO Generators Served by Enbridge

Generator	Capacity (MW)
Douglas	126.0
Goreway	942.0
Greater Toronto Airports Authority	128.0
Ottawa	79.8
Portlands	639.1
Thorold	287.0
Whitby	56.4
York	438.0