

ESSENTIAL CRANIAL BASE TECHNIQUES FOR MICRONEUROSURGERY

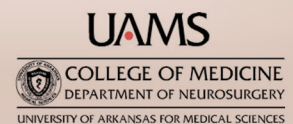
SENIOR NEUROSURGICAL RESIDENTS COURSE

NOVEMBER 8-9, 2013

Program Location

DePuy Synthes Institute

4600 Riverside Dr.
Palm Beach Gardens, Florida 33410



FACULTY

Course Director

J.D. Day, MD, FAANS

Professor and Chair
Department of Neurosurgery
University of Arkansas for
Medical Sciences

Invited Lecturers

Antonio Bernardo, MD

Weill Medical College of
Cornell University

John R. Floyd, II, MD

The University of Texas Health
Science Center

Steven Giannotta, MD

Keck School of Medicine at USC

Apply Online - Limited Enrollment
www.academiceventmanagement.com

Contact Pat Fitzwater for more information:
pat@academiceventmanagement.com | 805-300-9154



AGENDA

THURSDAY | NOVEMBER 7, 2013

6:30-8:30 pm

Welcome Reception | Marriott Palm Beach Gardens Hotel-Poolside

FRIDAY | NOVEMBER 8, 2013

7:30 am

Lecture | Extradural Temporopolar Transcavernous Approach

8:30

Laboratory Exercise | Orbitocranial Approaches/ Transcavernous Dissection

10:15

Clinical Correlations Lecture | Managing Lesions in and Around the Cavernous Sinus

10:45

Laboratory

12:30 pm

Lunch

1:00

Lecture | Anterior Transbasal Approach

2:00

Laboratory Exercise | Transbasal Approach to the Clivus

3:30

Clinical Applications Lecture | Managing Lesions of the Anterior Cranial Base and Clivus

4:00

Laboratory

5:30

Adjourn

7:00

Course Dinner | Cranial Base Case Discussions

SATURDAY | NOVEMBER 9, 2013

7:30 am

Lecture | Anterior Transpetrosal Approach

8:30

Laboratory Exercise

10:15

Lecture | Clinical Correlations

10:45

Laboratory

12:30 pm

Lunch

1:00

Lecture | Retrosigmoid Trans – and Suprameatal Approach

1:30

Laboratory

3:00

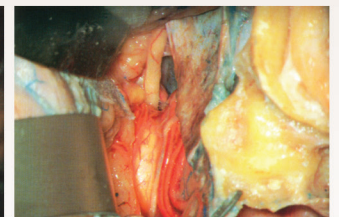
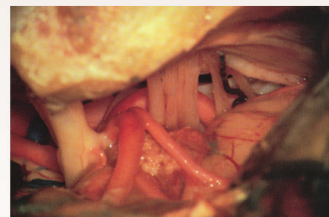
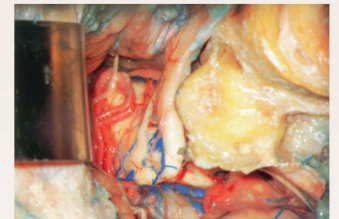
Lecture | Foramen Magnum and Jugular Foramen Approaches

3:30

Laboratory

5:30

Adjourn



Approval by Department Chair must be obtained prior to completing the application and a letter of approval must be attached. Enrollment applications must be made online before **October 18, 2013**. Enrollments are limited and subject to approval. Please ensure you understand your program's policies governing support of Resident training and be prepared to provide key information concerning Residency Coordinator contact information.