

New Trash & Recycling Services in HC MUD 24 Effective September 2017

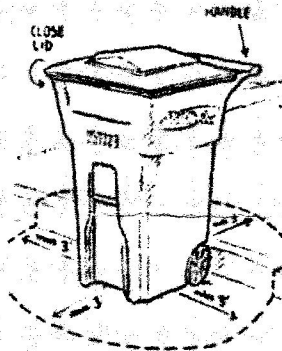


Residential Waste Collection Guidelines

Please remember, when setting out your garbage, the WCA carts are to be placed so that the handles and wheels are facing resident's home.

When placing your carts out each service day (Monday and Thursday) WCA will place them back at the point of origin, once the carts are emptied. (If you place them at the curb they will be returned to the curb, if set out on the grass near the curb they will be placed back to that area, etc.)

When filling up your trash carts, always place trash in a bag before depositing in your trash cart. This method will reduce the chance of trash flying out of the cart during and onto the ground, during the collection process, especially on windy days.



Unaccepted Items

- | | |
|------------------------------------|-----------------|
| Wood | Stone |
| Masonry debris | Carpet |
| Roofing material | Nails |
| Lawn mowers | Tree trunks |
| Sheetrock or drywall | Water softeners |
| Paneling | Tile |
| Windows | Tires |
| Steel/cast iron building materials | Concrete |
| Insulation | Doors |
| Dirt in large quantity | Propane tanks |

Accepted Heavy Trash Items

- Household Appliances-**Refrigerators must have freon drained and be tagged accordingly by certified technician**
- Hot Water Heaters- **must be drained**
- Furniture
- Mattresses
- Grills- **must be emptied of ash, briquettes, propane tanks**

Service Collection Schedule

Service Days (Trash) – Monday

Service Days (Recycle) – Thursday

Service Days (Heavy Trash and Yard Waste) Every Thursday

Service Hours - No earlier than 7:00 am and no later than 6:00 pm

WCA Customer Care – 281-368-8397

(Refer to HC MUD 24 contract)

Holiday Schedule – No service on:

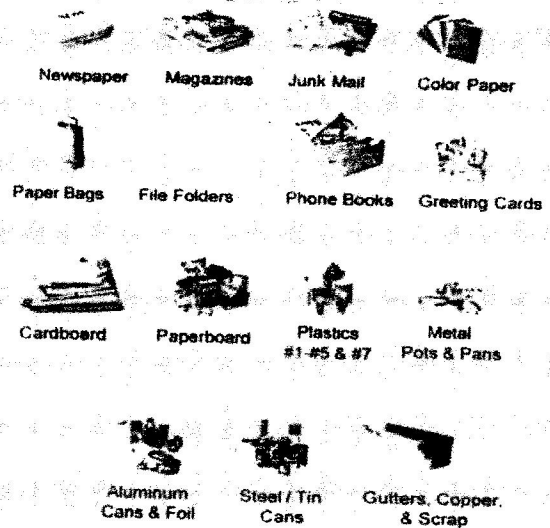
New Year's Day, Memorial Day, Independence Day, Thanksgiving Day, and Christmas Day

Holiday service is provided on the next scheduled service day.

Yard Waste Guidelines

Brush and tree trimmings, cut in lengths not to exceed 3 feet, no greater than 3 inches in diameter, securely tied in bundles, not to exceed 40-lbs, will be picked-up from the curb.

Accepted Recyclable Items



Unaccepted Recyclable Items

Glass Bottles, Plastic Bags, Styrofoam, Soiled Pizza Boxes, Coat Hangers, Paint & Solvent Containers, Light Bulbs, Mirrors, Windows, Dishes & Cups, Paper Towels, Napkins, Facial & Toilet Tissue