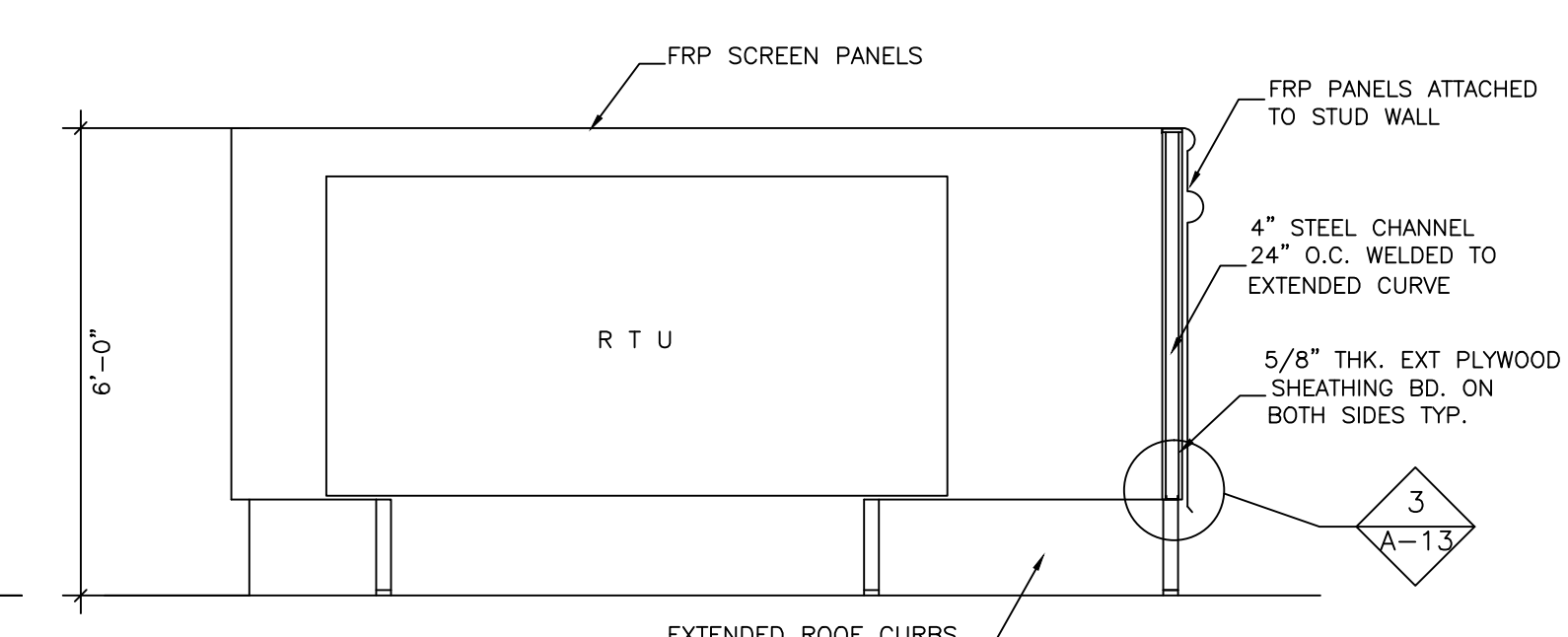
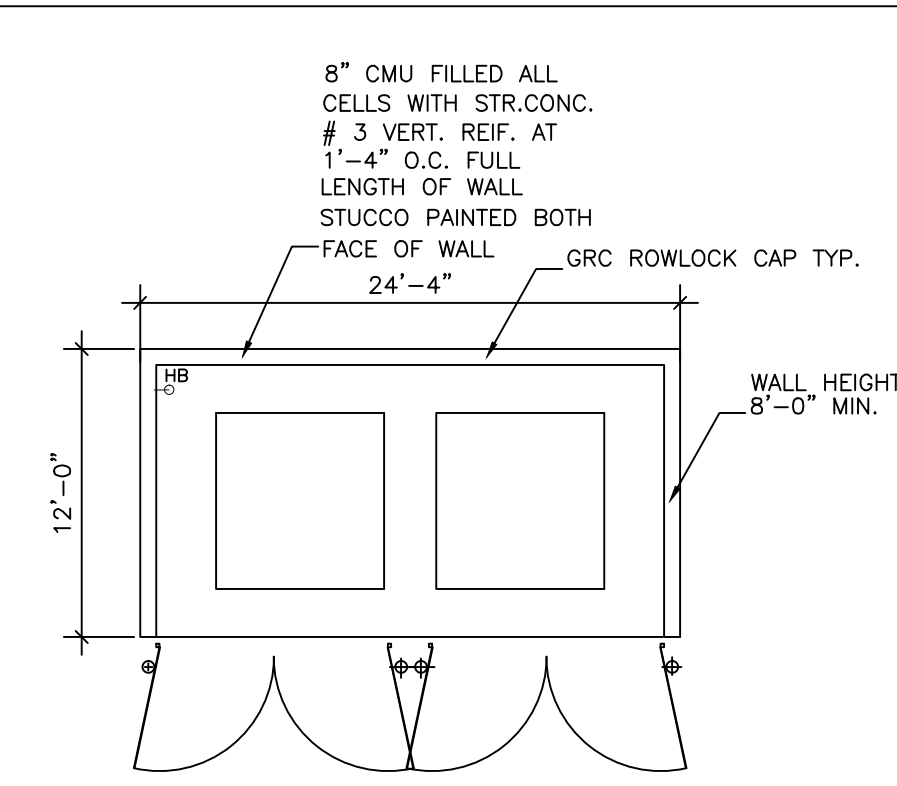


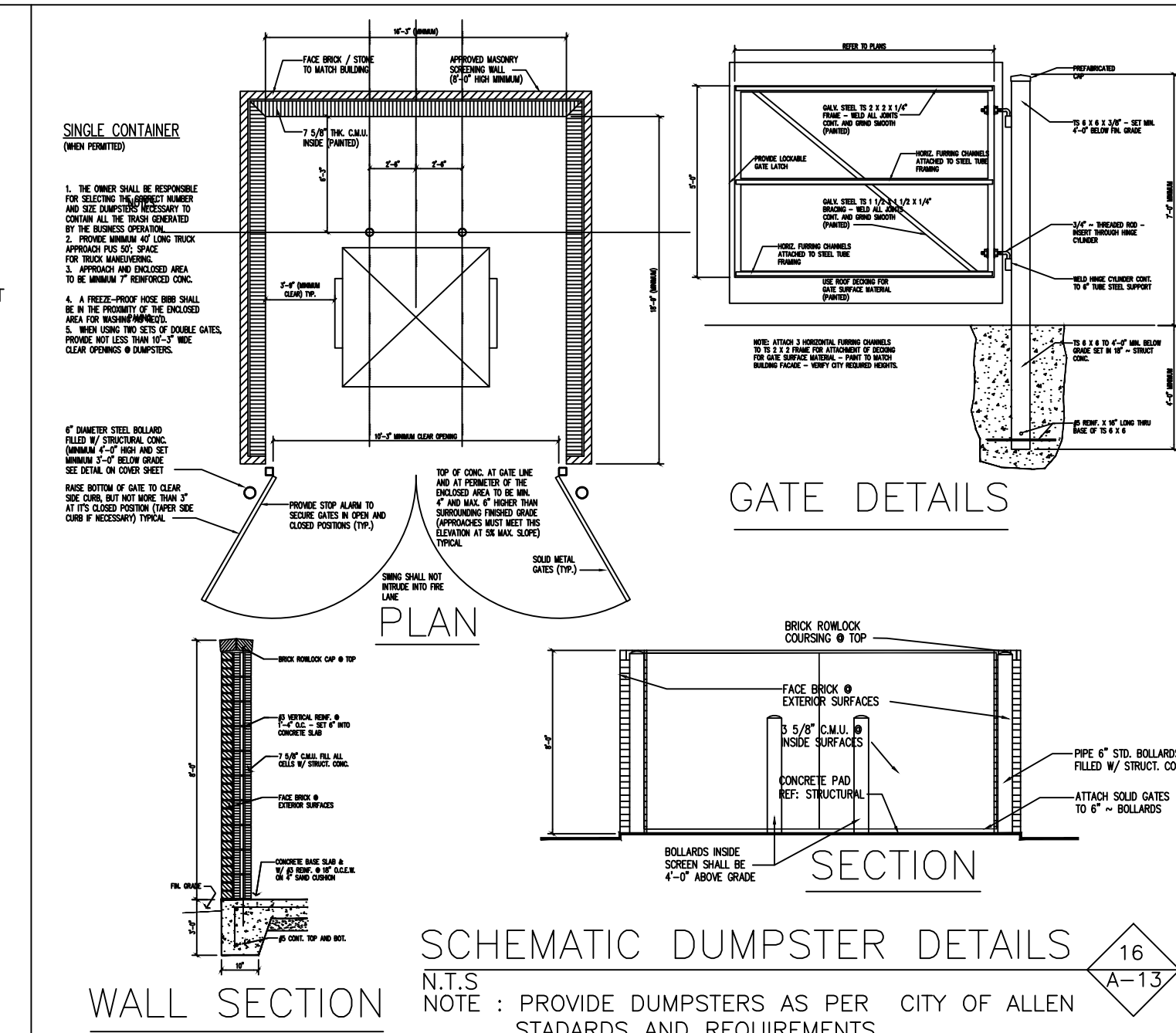
ELEVATION OF SCREEN WALL
N.T.S



SECTION AT ROOF TOP UNIT
N.T.S



DUMPSTER PLAN
N.T.S
NOTE: SEE SITE PLAN FOR LOCATION

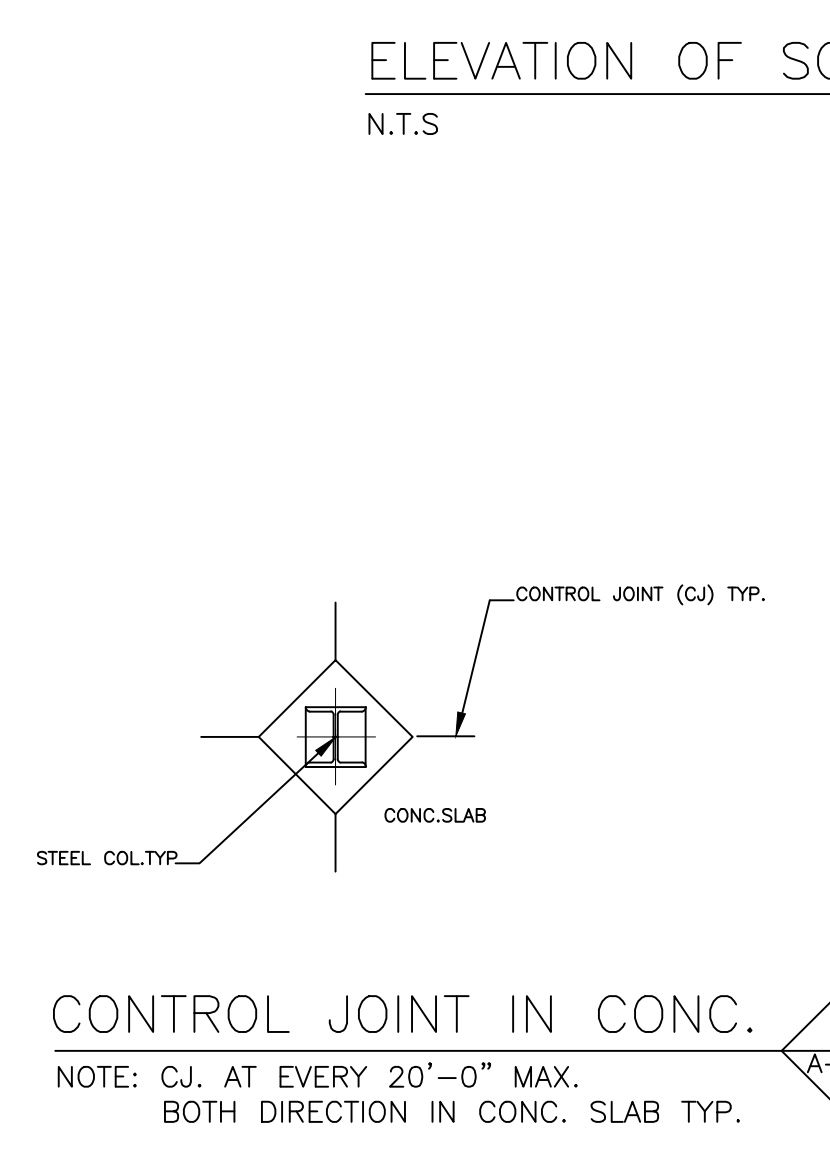


SCHEMATIC DUMPSTER DETAILS
N.T.S
NOTE: PROVIDE DUMPSTERS AS PER CITY OF ALLEN STANDARDS AND REQUIREMENTS.

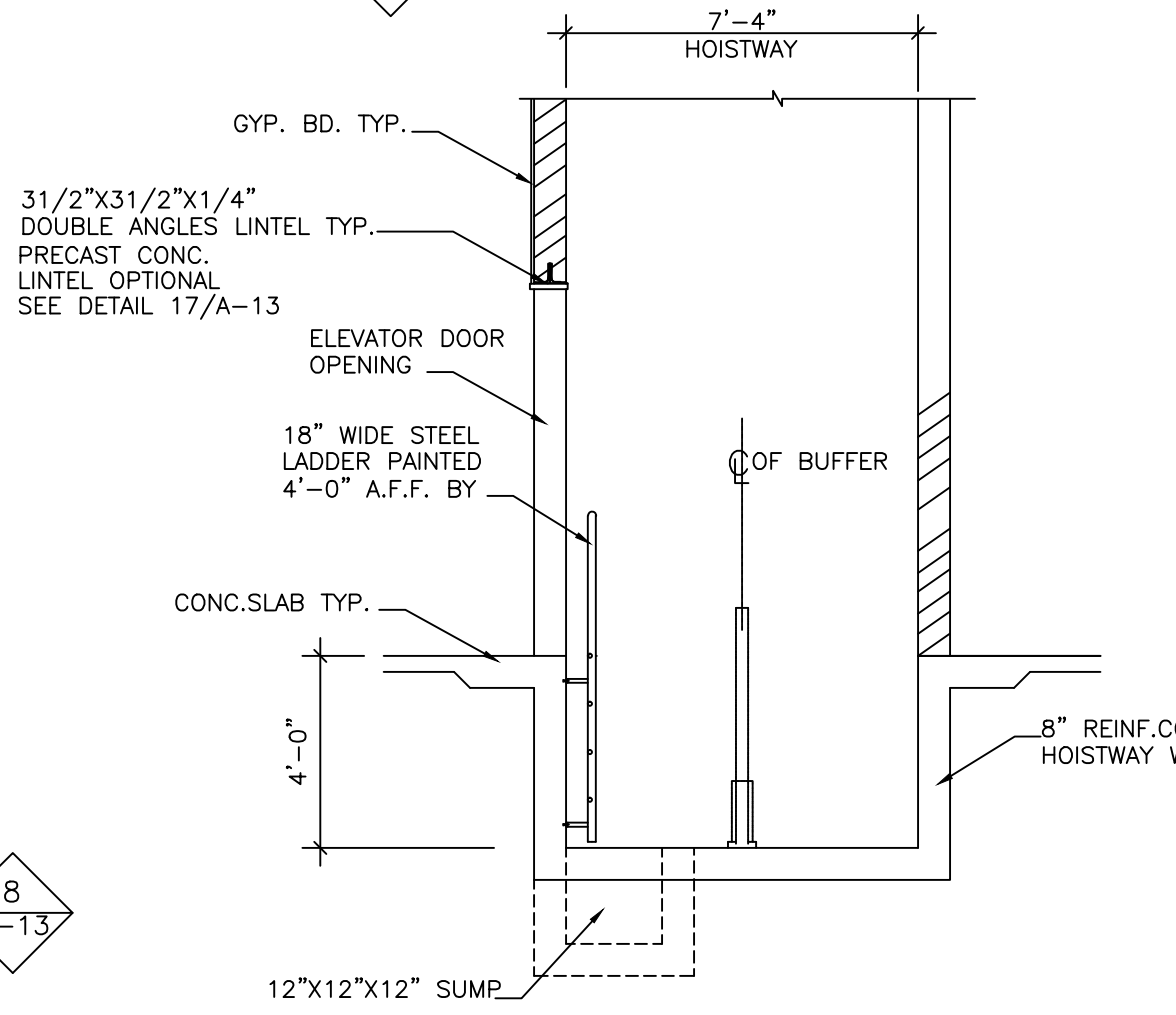
ELEVATOR:
PROVIDE PRE-ENGINEERED PASSENGER ELEVATOR BY DOVER - CIMARRON 2000 LBS CAPACITY OR APPROVED EQUAL.
CONTRACTOR TO SUBMIT DETAILED SHOP DRAWINGS SHOWING SILL AND HEAD DETAILS INCLUDE ALL REQUIRED DETAILS FOR ELEV. PIT, LADDER AND ELEVATOR MACHINE ROOM.
TYPE: CIMARRON 20 PASSENGER W/ CLASS A
CAPACITY: 2000 LBS
SPEED: 115 FPM
OPERATION: SINGLE CAR, DMC-I, W/MICRO PROCESSOR CONTROLLER
TRAVEL: 32 FEET MAX.
ENTRANCE: 3'-0"X7'-0" SINGLE SPEED ELECTRICAL SERVE: 3 PHASE, 60 HZ.
CODE: COMPLY WITH ALL REQUIRED CODE INCLUDING AMERICANS W/ DISABILITIES ACT (ADA).

GENERAL NOTES: FOR KITCHEN-116 EQUIPMENT.
1. 4 BURNER GAS RANGE BY GE. ADA APPROVED MODEL # PGB940SEHSS OR APPROVED EQUAL. SIZE: 47 1/4"X30"X29 1/2"
2. GE HOOD MODEL # CV936MSS OR APPROVED EQUAL. SIZE: 18"X30"X21"
3. GE DISHWASHER ADA APPROVED MODEL # GDM2200VWV OR APPROVED EQUAL. SIZE: 34"X24"X25 3/4"
4. ELKAY KITCHEN SINK: ADA APPROVED MODEL # EFRU281610 OR APPROVED EQUAL. 18 1/2"X30 1/2"

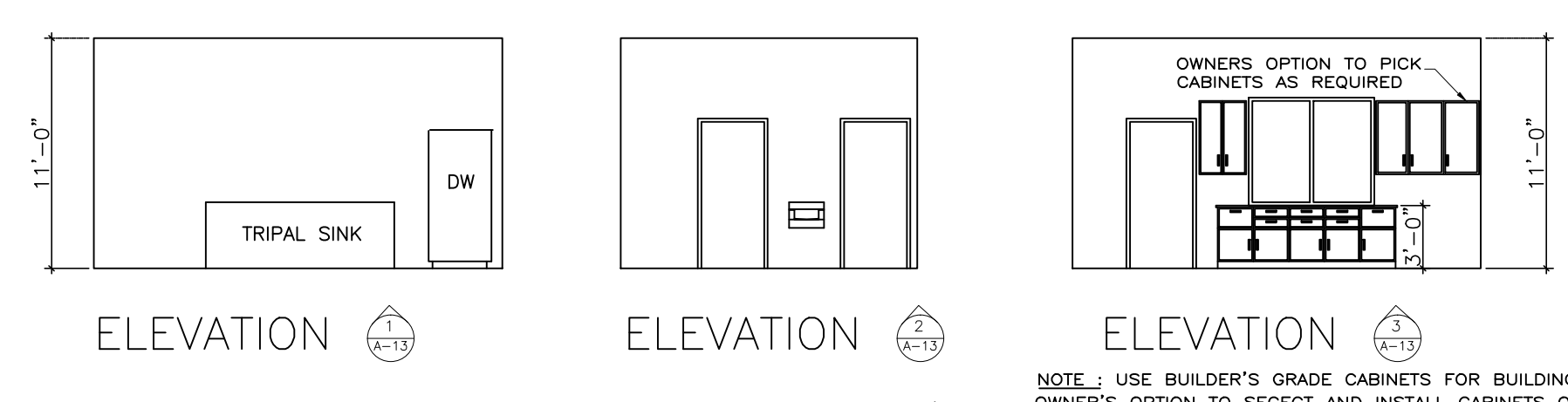
GENERAL NOTES: FOR KITCHEN-125 EQUIPMENT.
1. RESTURANT HOOD SYSTEM W/MAKE UP AIR MODEL # MUA2008 OR APPROVED EQUAL. WITH ANSUL FIRE SUPPRESSION SYSTEM APPROVED BY CITY OF ALLEN TX.
2. STAINLESS STEEL 3 COMPARTMENT SINK WITH PRE-RINSE FAUCET AND SANITIZER APPROVED BY CITY OF ALLEN TX.
3. HAND SINK: ACE STAINLESS STEEL WALL MOUNTED MODEL SIZE: 15 3/4"X15"X6"HS-1615W OR APPROVED EQUAL.
4. RW INC. AR-6 BURNER; 36" GAS RANGE W/CASTER & CONVECTION OVEN BASE OR APPROVED EQUAL.
5. 2 STOCK POT STOVES BY SATURAN KERBY SUPPLIES. MODEL # SHP-1HD OR APPROVED EQUAL OR APPROVED EQUAL.
6. 3 STAINLESS STEEL COMMERCIAL WORK BENCH TABLES W/SS LEGS & UNDERSHELF OR APPROVED EQUAL. CASTERS - OWNER'S OPTION
7. STAINLESS STEEL COMMERCIAL WORK TABLES W/4" BACKSPASH OR APPROVED EQUAL. BY: REGENCY ITEM # 600T3027G
8. WALK IN COOLERS BY: BUSH REFRIGERATION. CUSTOM BUILT (7'-2" x 8'-8") PROVIDE ELECTRICAL AND PLUMBING OUTLETS AS REQUIRED BY MFG.
9. HOBART VENTLESS DISHWASHER PROVIDE ELECTRICAL AND PLUMBING OUTLETS AS REQUIRED BY MFG.
10. CAN WASH FAUCET - VANDEL RESISTANT W/INTEGRAL KEY STOPS
11. ALL KITCHEN EQUIPMENT AND CABINETRY, UNLESS OTHERWISE SPECIFIED IS FURNISH AND INSTALLED BY OWNER



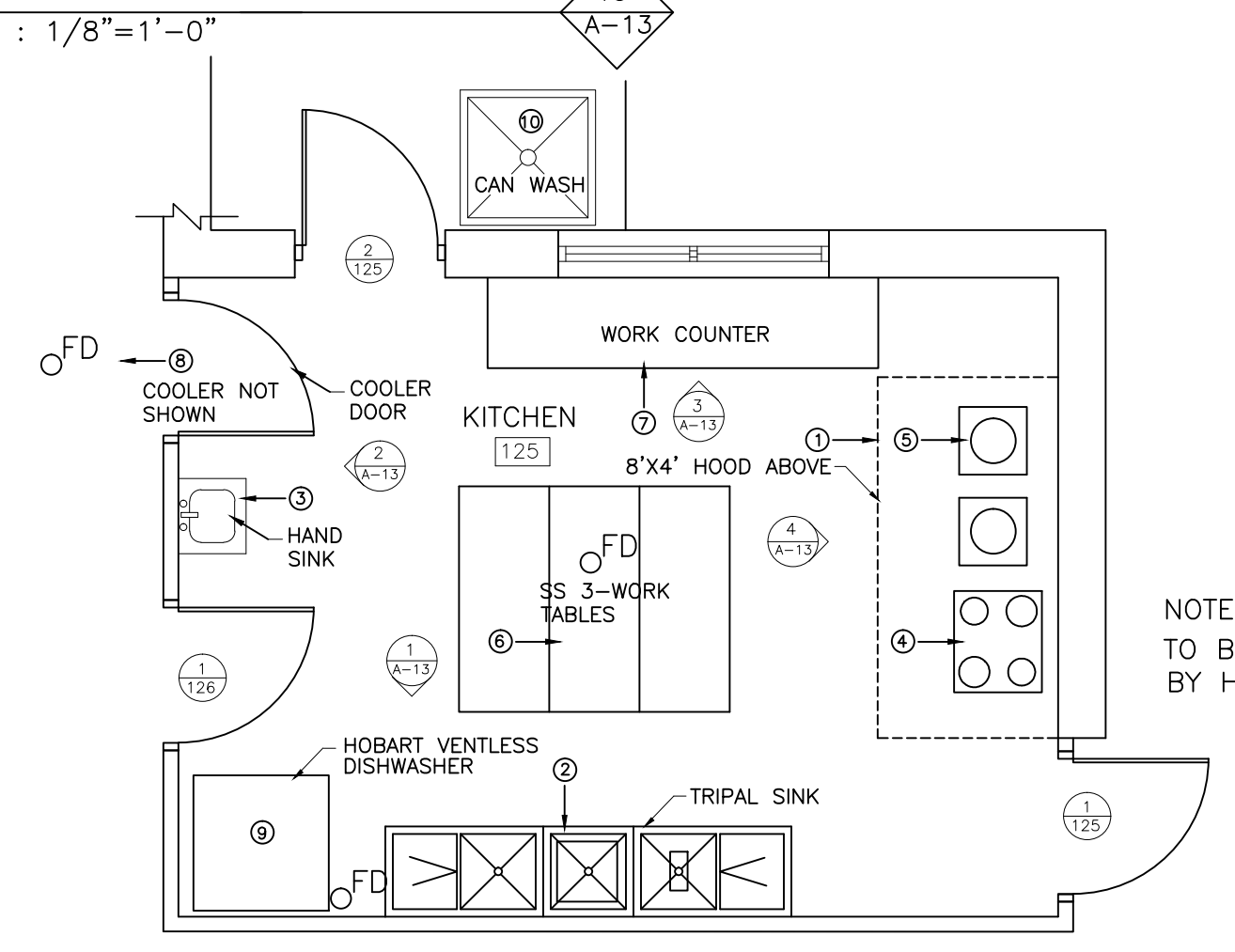
CONTROL JOINT IN CONC.
NOTE: C.J. AT EVERY 20'-0" MAX. BOTH DIRECTION IN CONC. SLAB TYP.



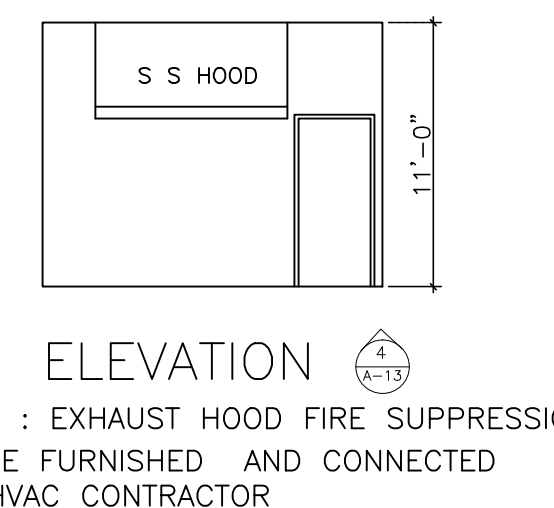
SECTION A-A THRU HOISTWAY
N.T.S
SEE STRUCTURAL DWG S-10 FOR ADDITIONAL DETAILS. VERIFY ELEVATOR DOOR OPENING WITH ELEVATOR VENDOR ELEVATOR VENDOR TO SUBMIT SHOP DRAWINGS FOR APPROVAL BY THE A/E PRIOR TO ANY FABRICATION.



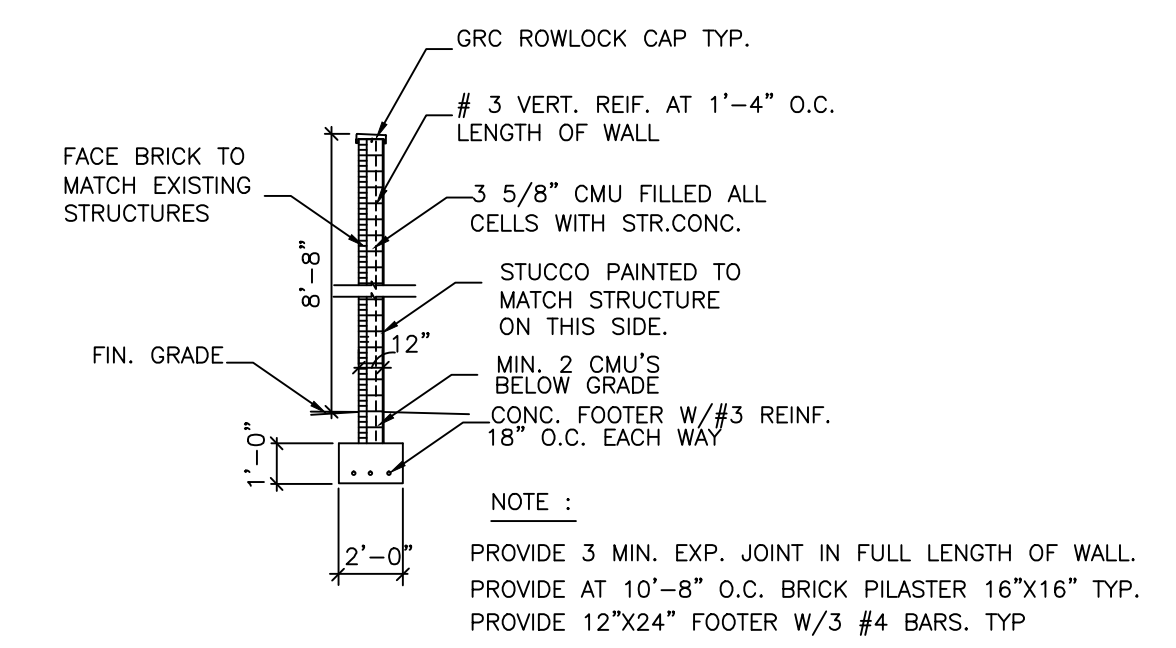
KITCHEN - ELEVATIONS
SCALE: 1/8"=1'-0"



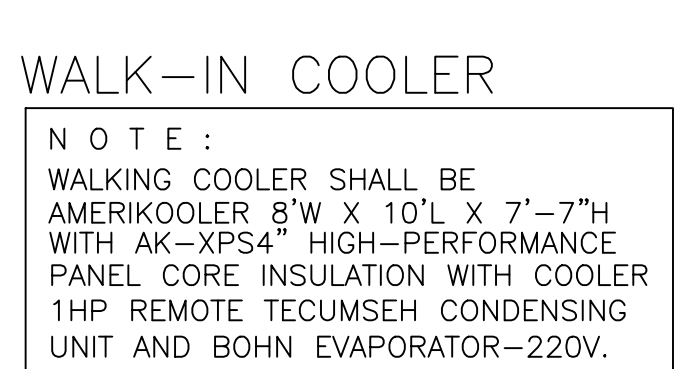
PARTIAL KITCHEN PLAN
SCALE: 1/4"=1'-0"



ELEVATION
NOTE: EXHAUST HOOD FIRE SUPPRESSION TO BE FURNISHED AND CONNECTED BY HVAC CONTRACTOR



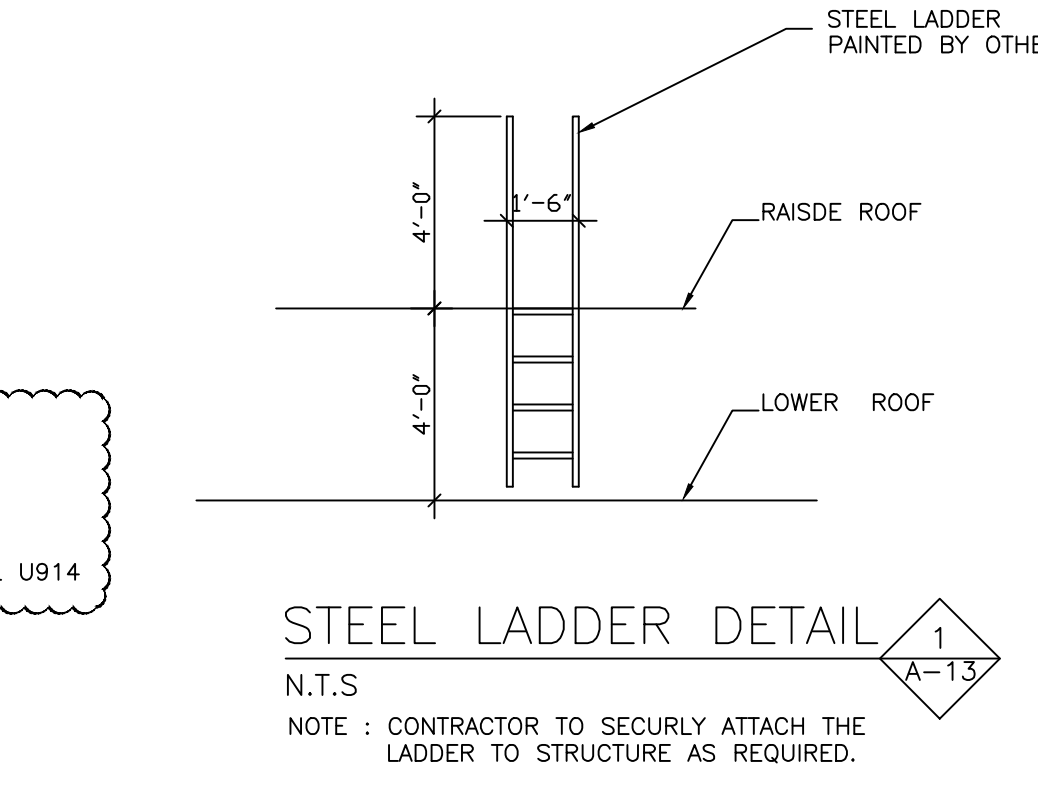
SCHEMATIC SCREEN WALL SECTION
N.T.S
NOTE: SEE SITE PLAN FOR LOCATION



WALK-IN COOLER
NOTE: WALKING COOLER SHALL BE AMERIKOOLER 8'W X 10'L X 7'-7"H WITH AK-XPS4" HIGH-PERFORMANCE PANEL CORE INSULATION WITH COOLER 1HP REMOTE TECUMSEH CONDENSING UNIT AND BOHN EVAPORATOR-220V.
REVISED 04/04/2015



HEAD DETAIL AT ELEVATOR WALL
N.T.S
NOTE: CONTRACTOR TO SECURLY ATTACH THE LADDER TO STRUCTURE AS REQUIRED.



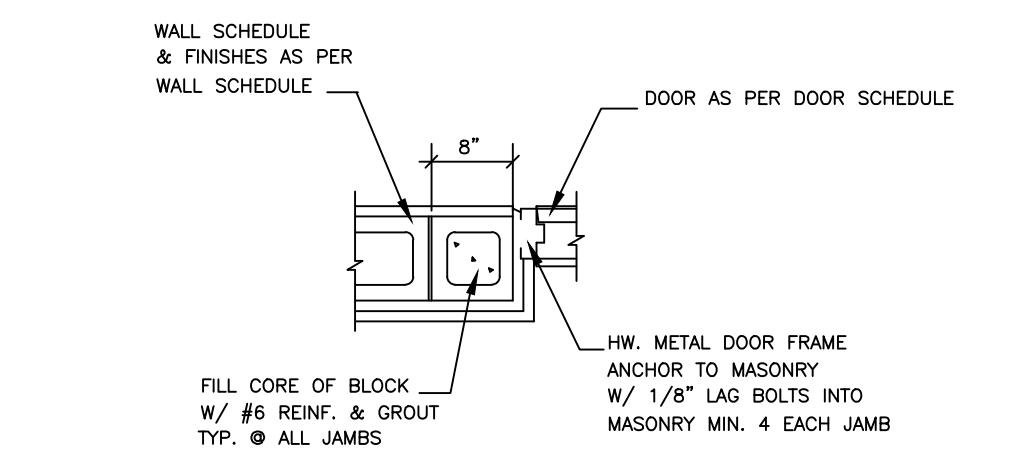
STEEL LADDER DETAIL
N.T.S
NOTE: CONTRACTOR TO SECURLY ATTACH THE LADDER TO STRUCTURE AS REQUIRED.



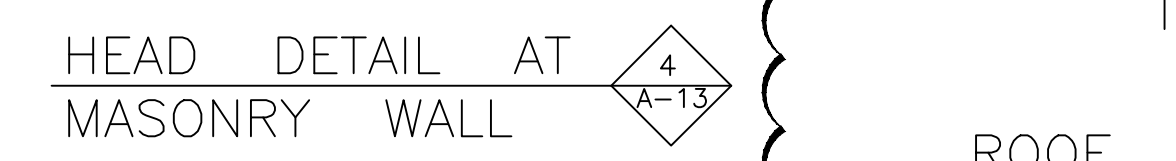
JAMB DETAIL TYPICAL WOOD FRAME (OPTIONAL)
NOTE: FOR INTERIOR WOOD DOORS



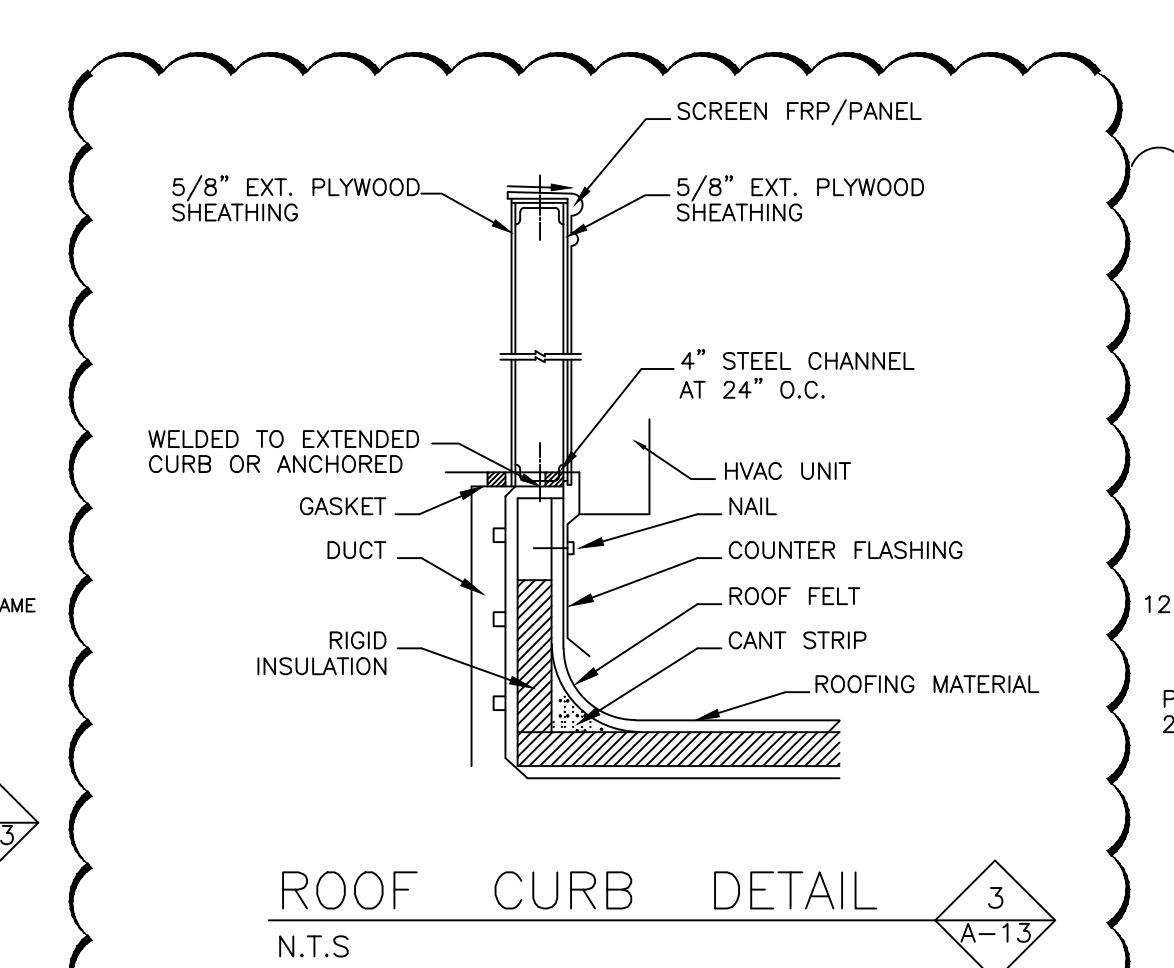
JAMB DETAIL / STOREFRONT
NOTE: NARROW STILE ALUMINUM STOREFRONT



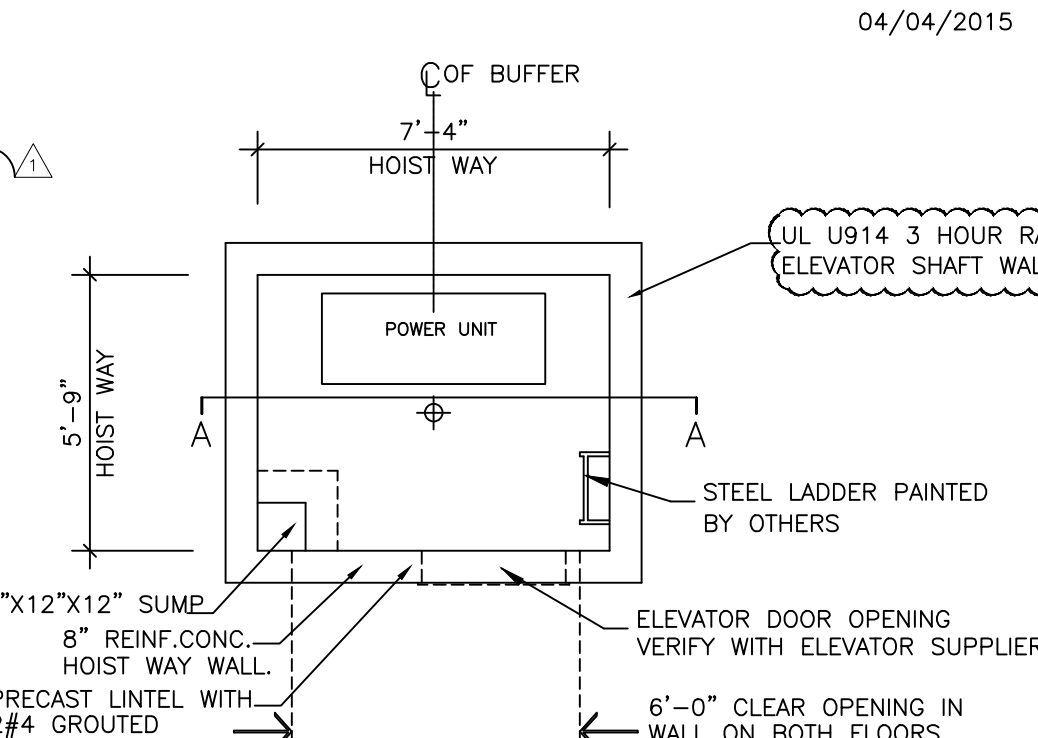
JAMB DETAIL AT MASONRY WALL



HEAD DETAIL AT MASONRY WALL

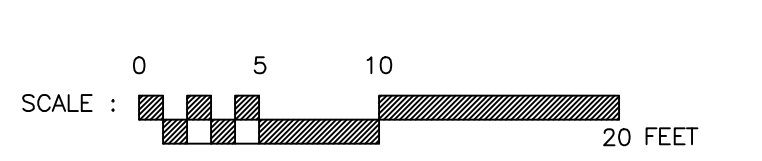


ROOF CURB DETAIL
N.T.S



PLAN-ELEVATOR HOISTWAY
N.T.S
NOTE: CONTRACTOR TO VERIFY ALL ELEVATOR PIT DIMENSIONS WITH THE ELEVATOR SUPPLIER. PROVIDE 3M FIREDAM SPRAY 200 (GRAY) OR APPROVED EQUAL AT ALL PENETRATIONS

CONCRETE BLOCK - MIN. 7-5/8 IN. DEPTH CONCRETE BLOCKS WITH UL CLASSIFICATION MARK D-2 (2 HR)
FURRING CHANNELS - 7/8 IN. DEEP MIN 25 GAUGE GALV STEEL FURRING CHANNEL, 1-3/8 IN. WIDE ON TOP AND 2-3/4 IN. WIDE AT BOTTOM @ 24 IN. O.C. CHANNEL PERPENDICULAR TO FLOOR WITH A CHANNEL PARALLEL TO AND APPROXIMATELY 3 IN. ABOVE FLOOR AND 3 IN. BELOW CEILING. CLEARANCE BETWEEN VERTICAL AND HORIZONTAL CHANNELS 1/2 IN.
GYPSUM BOARD - 1/2 IN. THICK, 4 FT. WIDE BOARD ATTACHED ONE SIDE TO RESILIENT OR FURRING CHANNELS.



rev	
rev	added ul fire rating added curb detail
date	10-05-2015 released for const.
scale	AS NOTED
drawn by	CADD-INV

SHASHI D. PATEL AIA NCARB ARCHITECTS AND PLANNERS
442 EAST END AVE. STE-B. PITTSBURGH PA 15221

ELEVATOR KITCHEN AND MISC. DETAILS
CONSTRUCTION DOCUMENT PHASE

RADHA KRISHNA TEMPLE
ALLEN TEXAS