

941

CHATHAM LANE

FOR LEASE



The information contained herein has either been given to us by the owner of the property or obtained from sources that we deem reliable. We have no reason to doubt its accuracy, but we do not guarantee it.

Bill Greenlee/Fil Line

**ROI Realty Services, Inc**

614.221.2500

[bill@roirealty.com](mailto:bill@roirealty.com)/[fil@roirealty.com](mailto:fil@roirealty.com)



941

CHATHAM LANE

**941 Chatham Lane**  
**Three-story, 52,000 SF**  
**Office Building**

▲  
**Office Available**

Suite 115: 4,142 SF

Suite 200: 2,285 SF

Suite 208: 2,662 SF

Suite 206: 1,439 SF

Suite 207: 3,430 SF

Suite 300: 4,190 SF

Suite 319: 2,187 SF

Suite 320: 4,165 SF



Bill Greenlee/Fil Line  
ROI Realty Services, Inc  
614.221.2500

[bill@roirealty.com](mailto:bill@roirealty.com)/[fil@roirealty.com](mailto:fil@roirealty.com)



941

CHATHAM LANE

▲  
**RATE**

Office: \$16.75 Full Service

Medical: \$19.95 Full Service

Includes utilities, repairs, maintenance, janitorial service, real estate taxes, insurance and management fee

▲  
**COMMON AREA**

12%

▲  
**PARKING**

3.3/1,000 SF

▲  
**DATA/TELECOM**

AT & T



The information contained herein has either been given to us by the owner of the property or obtained from sources that we deem reliable. We have no reason to doubt its accuracy, but we do not guarantee it.

Bill Greenlee/Fil Line  
**ROI Realty Services, Inc**

614.221.2500

[bill@roirealty.com](mailto:bill@roirealty.com)/[fil@roirealty.com](mailto:fil@roirealty.com)



941

CHATHAM LANE

▲  
**AMENITIES**

Great access to SR 315, OSU & Riverside Hospital  
Policeman stops rush hour traffic on Kenny Road  
to allow easy egress  
Renovated Common Areas and Restrooms  
Custom Finishes for Tenants

▲  
**ELEVATORS**

Two (2) elevators  
(One of which accommodates a stretcher)

▲  
**TRAVEL TIME**

Downtown—5.3 miles  
Airport— 12.3 miles  
OSU— 5.8 miles  
Riverside Hospital—1.7 miles



The information contained herein has either been given to us by the owner of the property or obtained from sources that we deem reliable. We have no reason to doubt its accuracy, but we do not guarantee it.

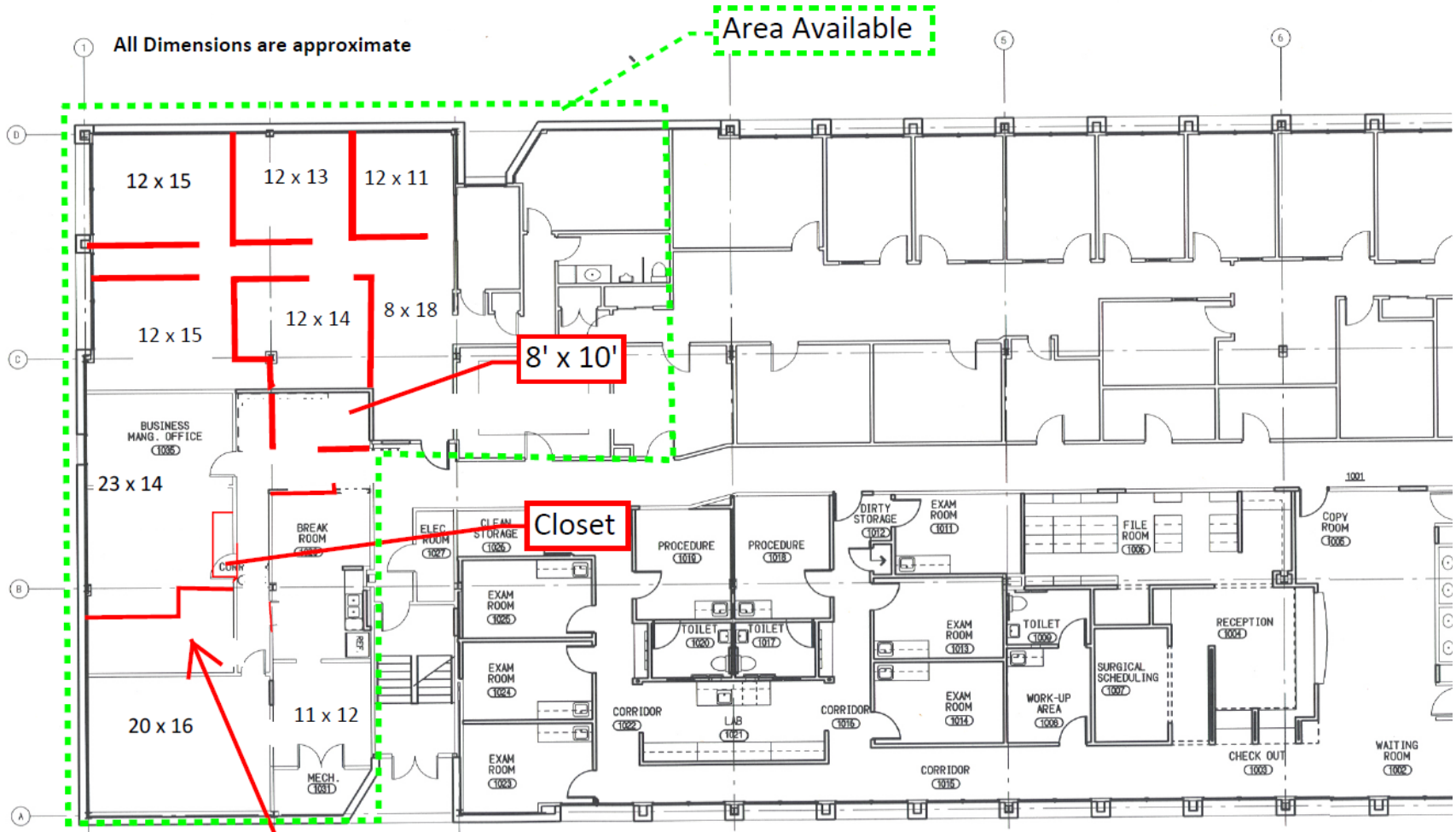
Bill Greenlee/Fil Line  
**ROI Realty Services, Inc**  
614.221.2500  
bill@roirealty.com/fil@roirealty.com



# 941

## CHATHAM LANE

FIRST FLOOR



All Dimensions are approximate

Area Available

8' x 10'

Closet

Restroom/Changing

941 Chatham Lane  
1st Floor, East Side

The information contained herein has either been given to us by the owner of the property or obtained from sources that we deem reliable. We have no reason to doubt its accuracy, but we do not guarantee it.

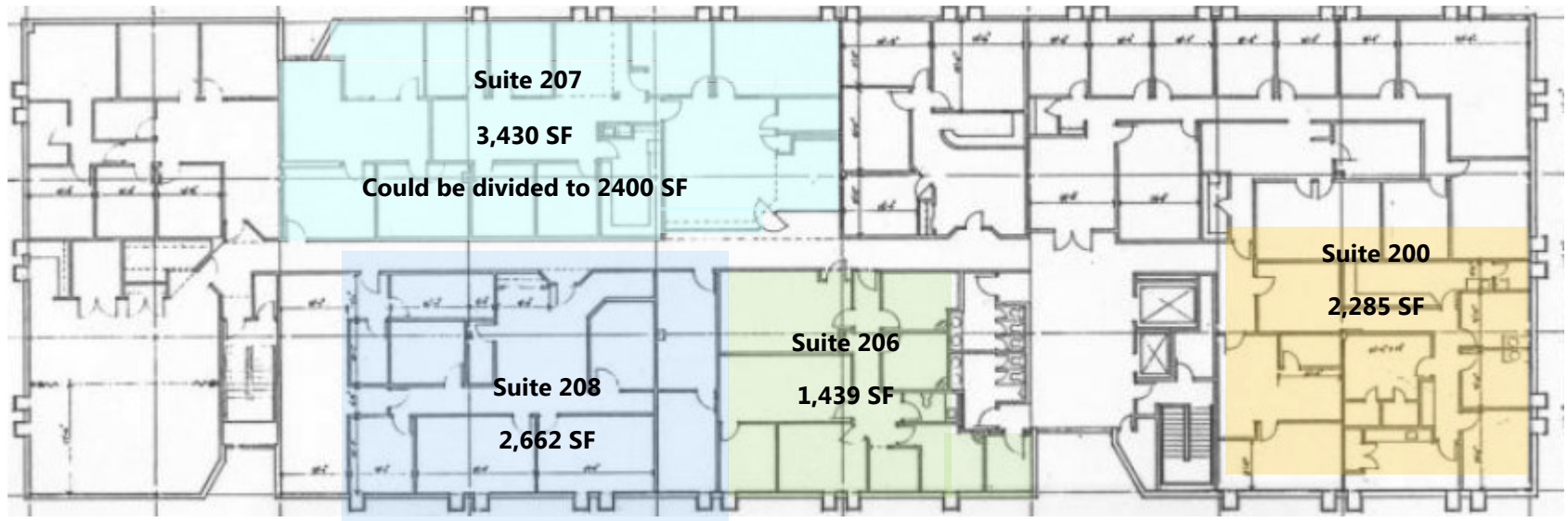
Bill Greenlee/Fil Line  
**ROI Realty Services, Inc**  
614.221.2500  
bill@roirealty.com/fil@roirealty.com



# 941

## CHATHAM LANE

SECOND FLOOR



The information contained herein has either been given to us by the owner of the property or obtained from sources that we deem reliable. We have no reason to doubt its accuracy, but we do not guarantee it.

Bill Greenlee/Fil Line  
**ROI Realty Services, Inc**

614.221.2500

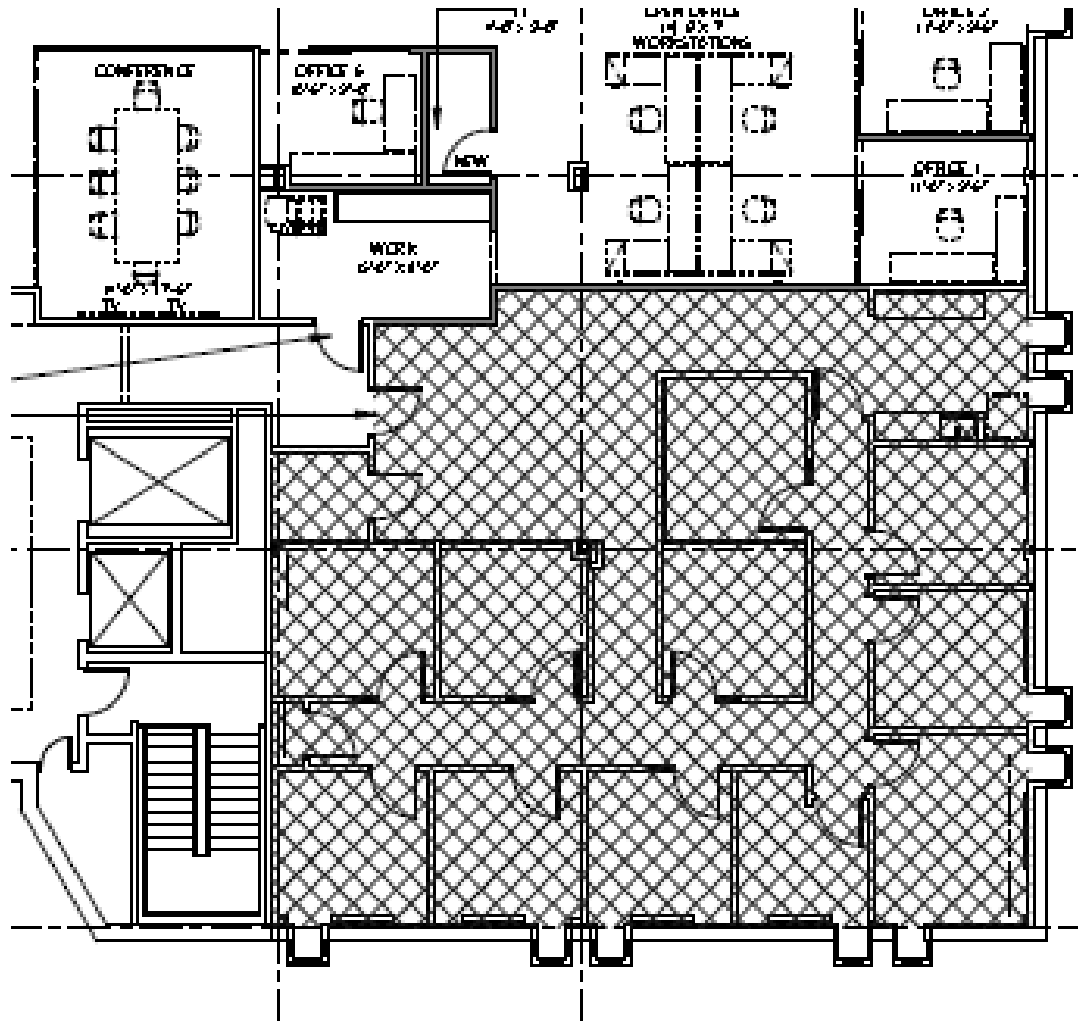
[bill@roirealty.com](mailto:bill@roirealty.com)/[fil@roirealty.com](mailto:fil@roirealty.com)



# 941

CHATHAM LANE  
SUITE 200—2,285 SF  
(Cross-hatched area)

SECOND FLOOR



The information contained herein has either been given to us by the owner of the property or obtained from sources that we deem reliable. We have no reason to doubt its accuracy, but we do not guarantee it.

Bill Greenlee/Fil Line  
**ROI Realty Services, Inc**

614.221.2500

[bill@roirealty.com](mailto:bill@roirealty.com)/[fil@roirealty.com](mailto:fil@roirealty.com)



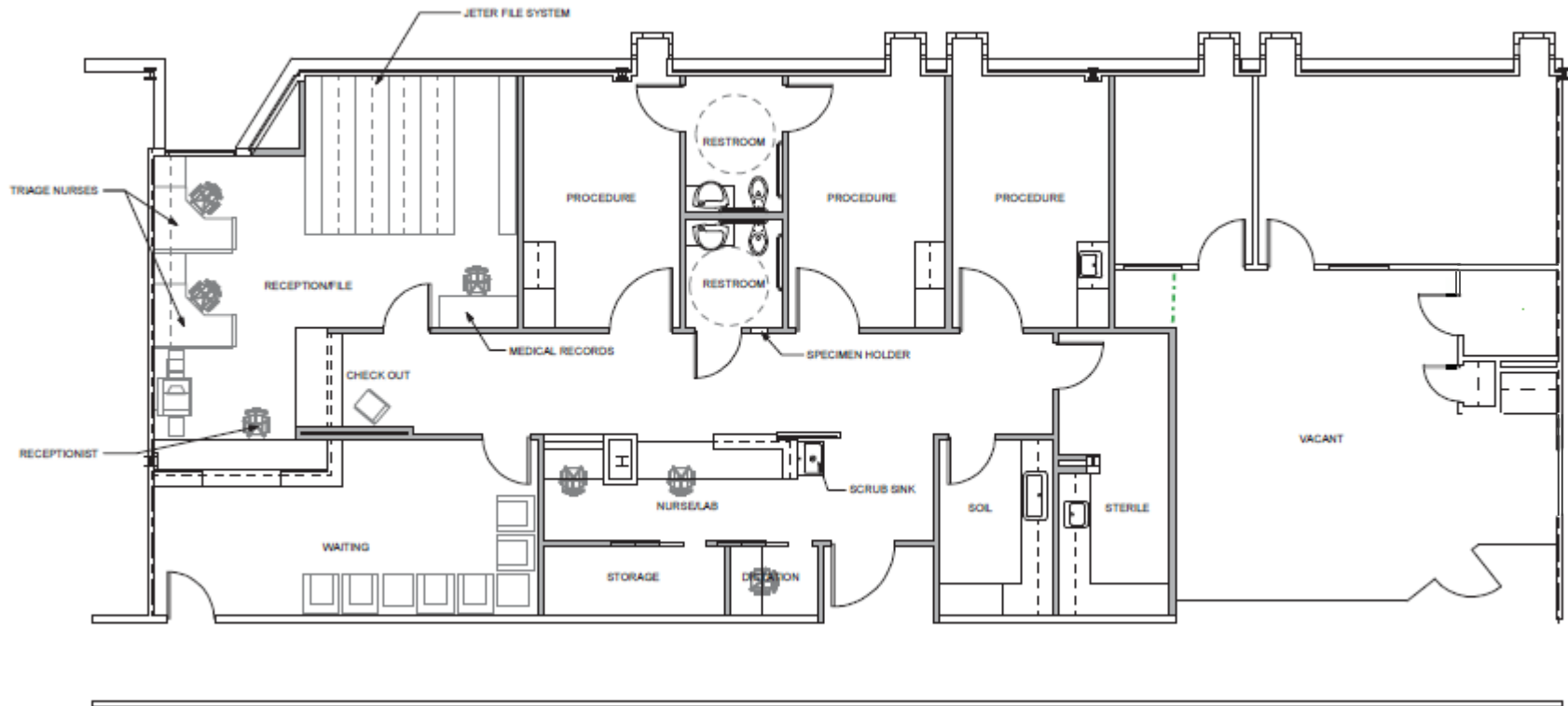
# 941

## CHATHAM LANE

SUI

TE

SECOND FLOOR



The information contained herein has either been given to us by the owner of the property or obtained from sources that we deem reliable. We have no reason to doubt its accuracy, but we do not guarantee it.

Bill Greenlee/Fil Line  
**ROI Realty Services, Inc**

614.221.2500

[bill@roirealty.com](mailto:bill@roirealty.com)/[fil@roirealty.com](mailto:fil@roirealty.com)



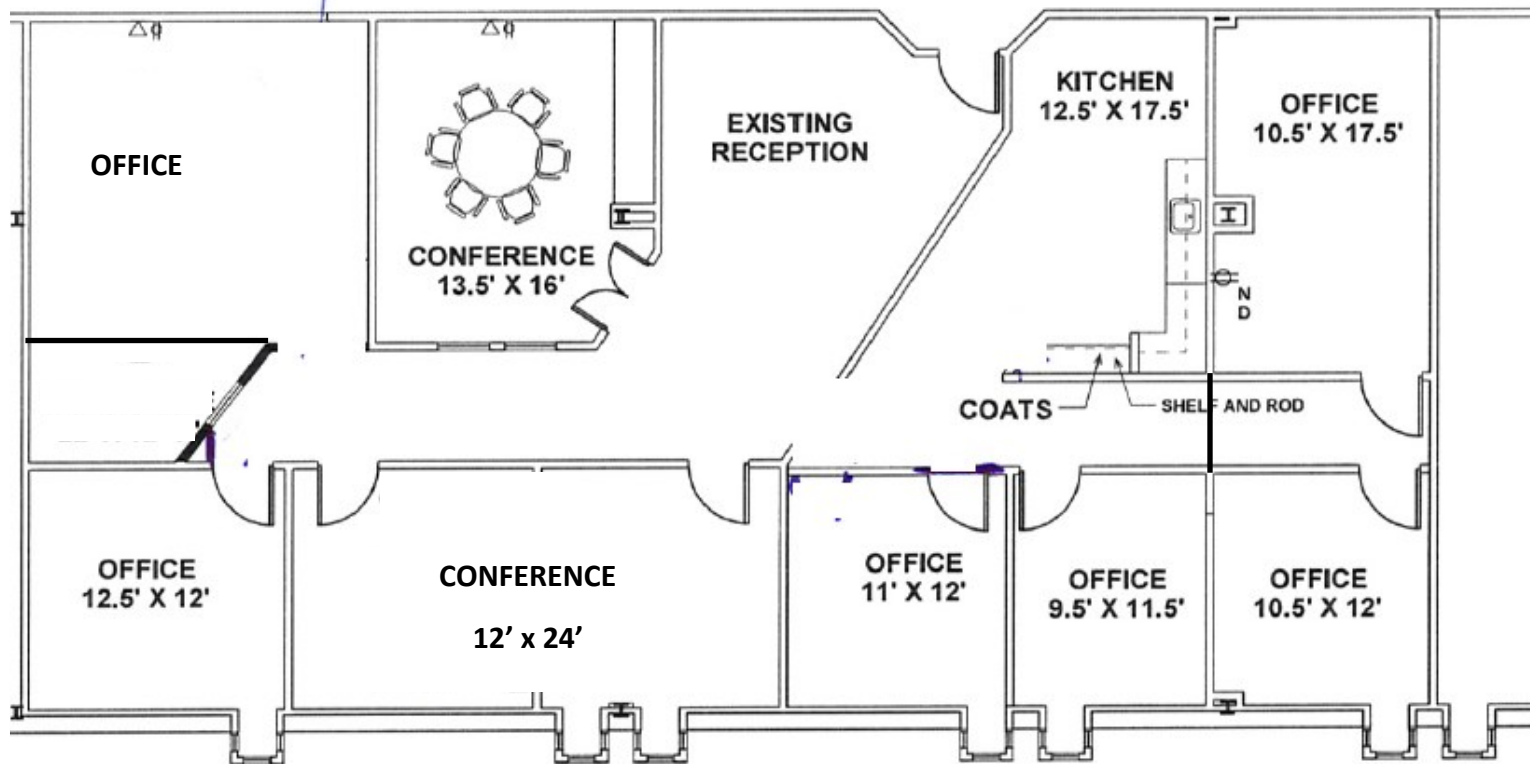


# 941

CHATHAM LANE

SUITE 212—2,662 SF

SECOND FLOOR



The information contained herein has either been given to us by the owner of the property or obtained from sources that we deem reliable. We have no reason to doubt its accuracy, but we do not guarantee it.

Bill Greenlee/Fil Line  
**ROI Realty Services, Inc**

614.221.2500

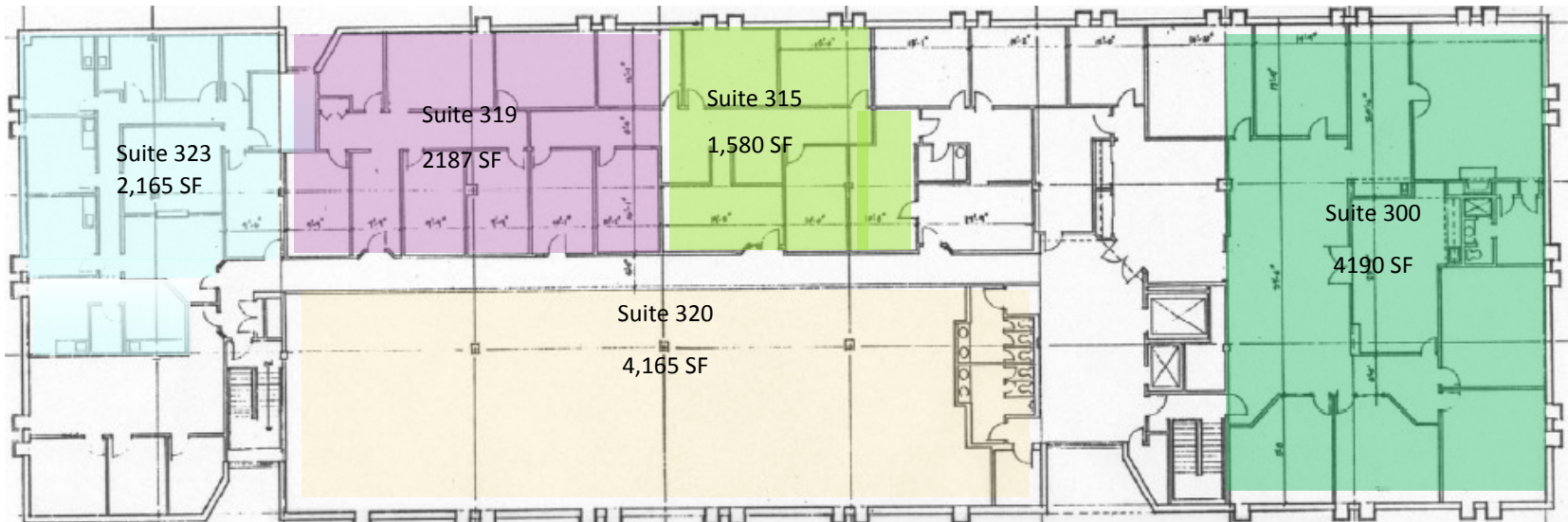
[bill@roirealty.com](mailto:bill@roirealty.com)/[fil@roirealty.com](mailto:fil@roirealty.com)



# 941

## CHATHAM LANE

THIRD FLOOR



The information contained herein has either been given to us by the owner of the property or obtained from sources that we deem reliable. We have no reason to doubt its accuracy, but we do not guarantee it.

Bill Greenlee/Fil Line  
ROI Realty Services, Inc

614.221.2500

[bill@roirealty.com](mailto:bill@roirealty.com)/[fil@roirealty.com](mailto:fil@roirealty.com)

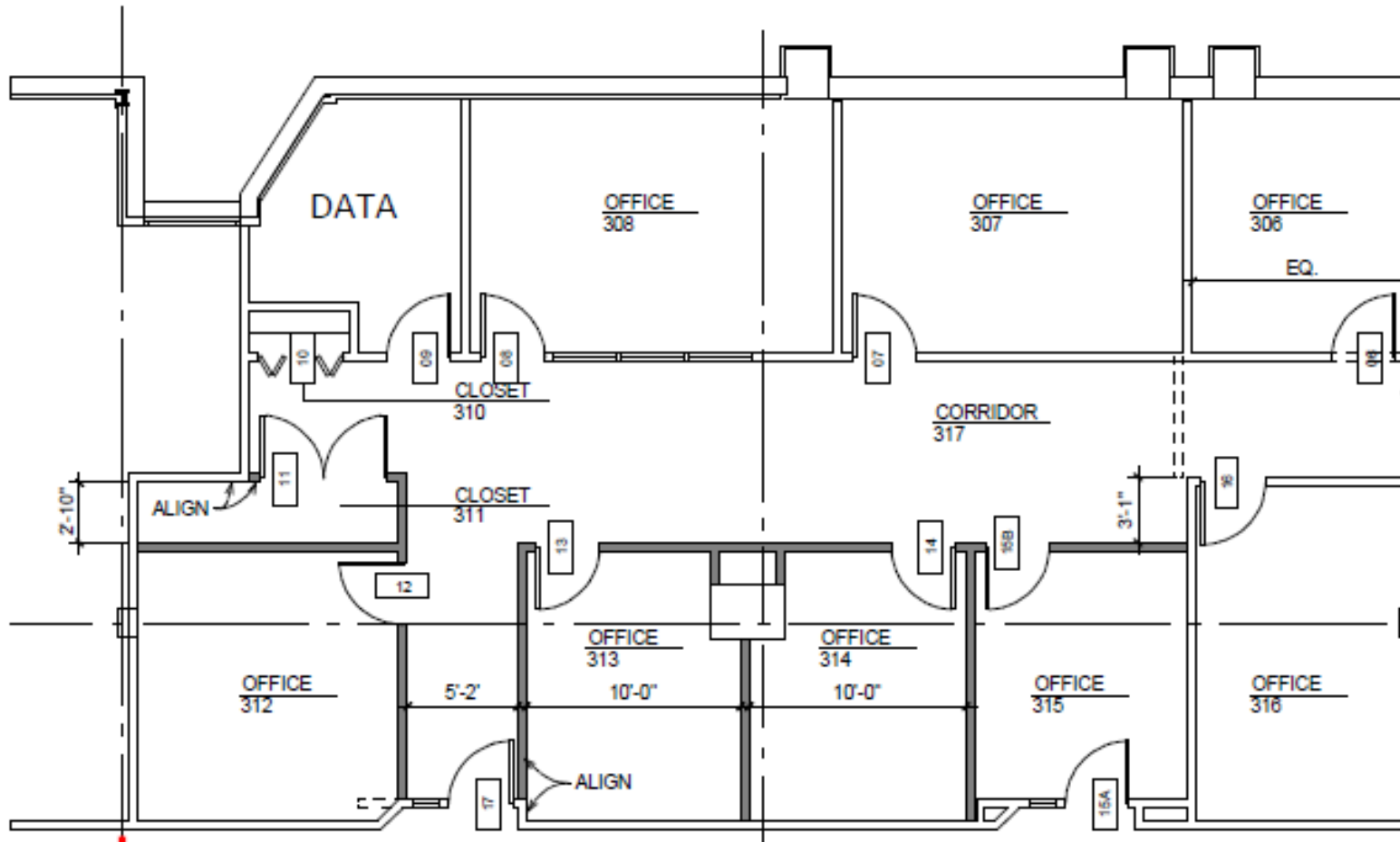


# 941

CHATHAM LANE

Suite 319—2,187 SF

THIRD FLOOR



The information contained herein has either been given to us by the owner of the property or obtained from sources that we deem reliable. We have no reason to doubt its accuracy, but we do not guarantee it.

Bill Greenlee/Fil Line  
ROI Realty Services, Inc

614.221.2500

bill@roirealty.com/fil@roirealty.com

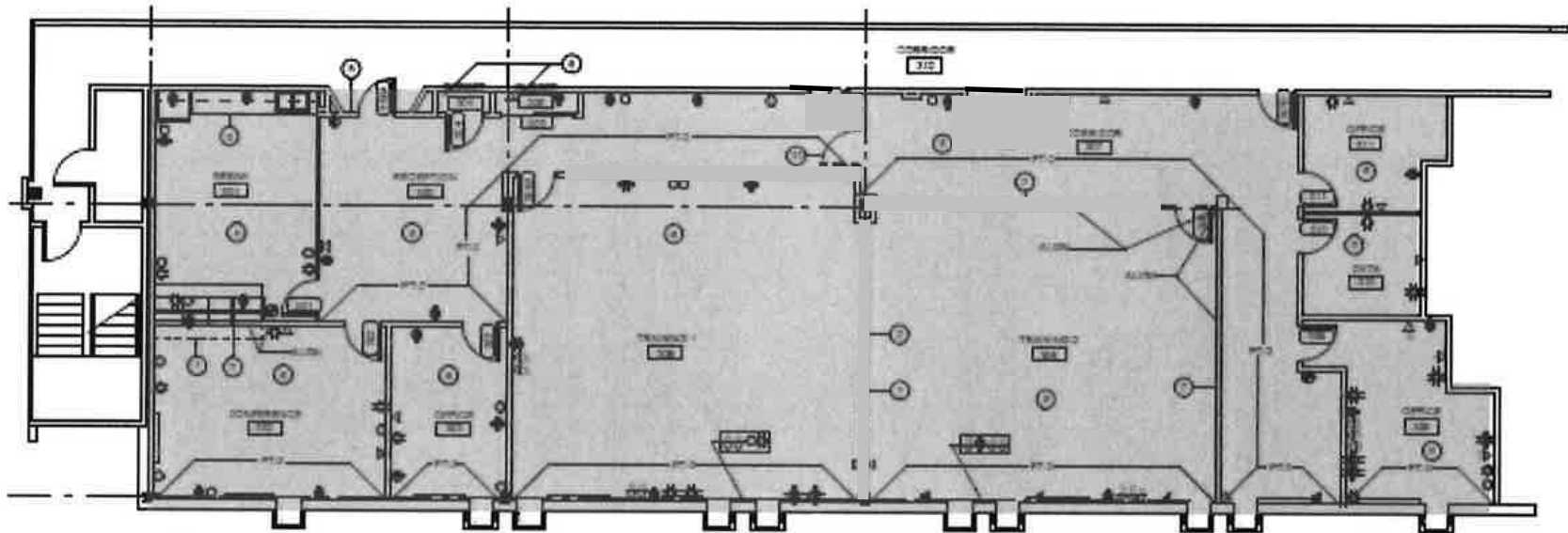


# 941

CHATHAM LANE

Suite 320—4,165 SF

THIRD FLOOR



The information contained herein has either been given to us by the owner of the property or obtained from sources that we deem reliable. We have no reason to doubt its accuracy, but we do not guarantee it.

Bill Greenlee/Fil Line  
ROI Realty Services, Inc

614.221.2500

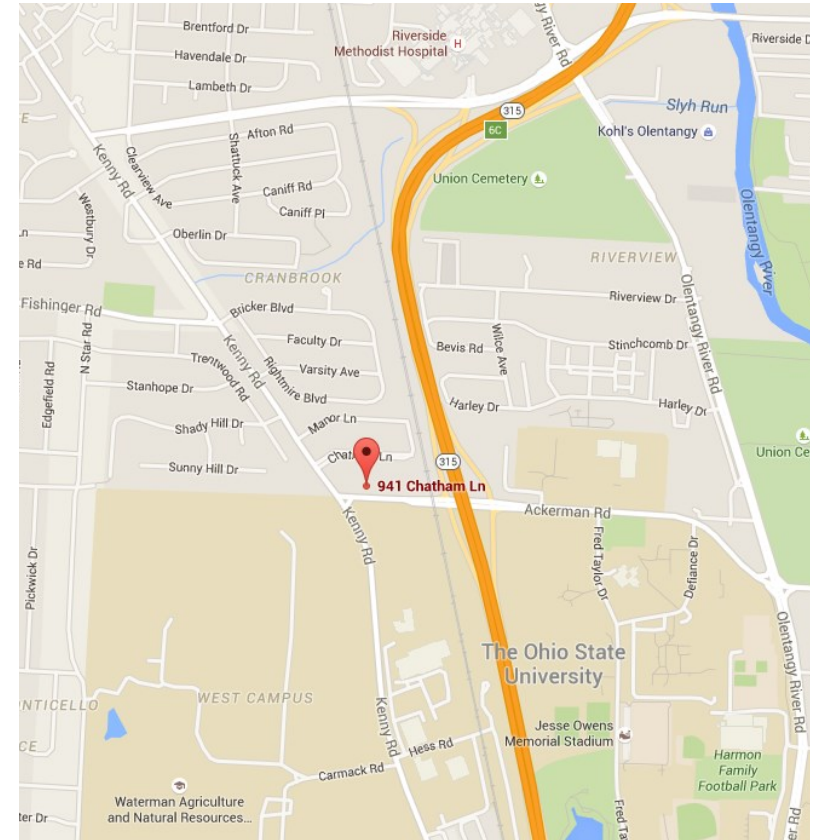
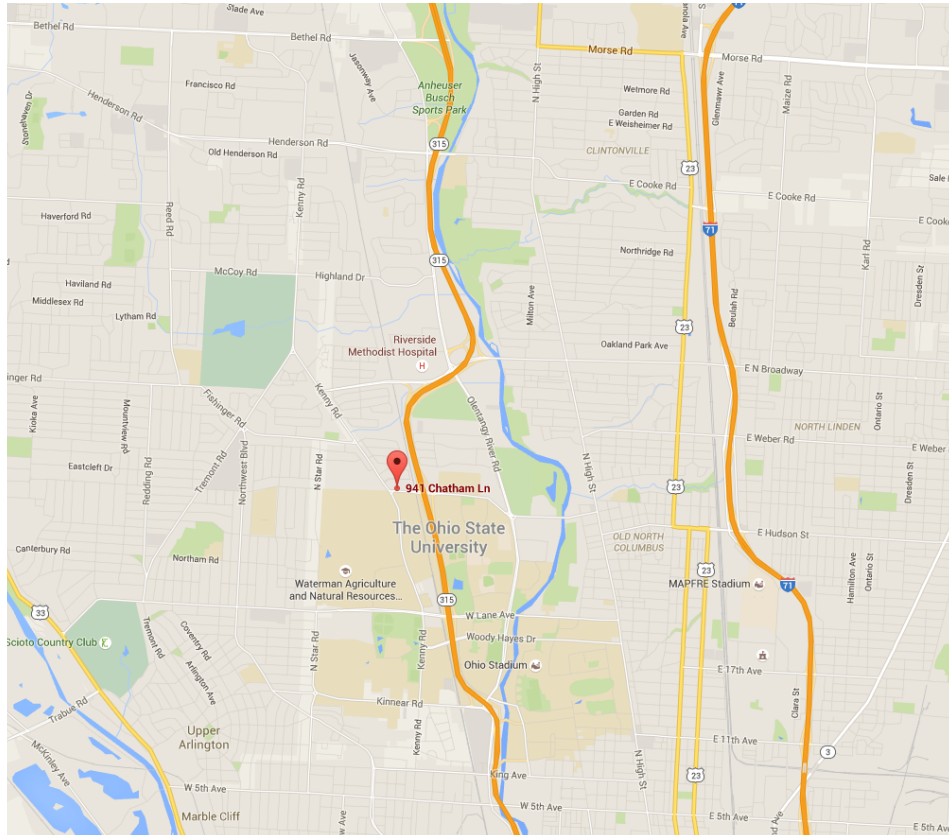
[bill@roirealty.com](mailto:bill@roirealty.com)/[fil@roirealty.com](mailto:fil@roirealty.com)



# 941

## CHATHAM LANE

LOCATION | MAPS



The information contained herein has either been given to us by the owner of the property or obtained from sources that we deem reliable. We have no reason to doubt its accuracy, but we do not guarantee it.

Bill Greenlee/Fil Line  
ROI Realty Services, Inc  
614.221.2500  
bill@roirealty.com/fil@roirealty.com



# 941

## CHATHAM LANE

Downtown Columbus

The Ohio State University

315



941 Chatham Lane

LOCATION | MAPS

The information contained herein has either been given to us by the owner of the property or obtained from sources that we deem reliable. We have no reason to doubt its accuracy, but we do not guarantee it.

Bill Greenlee/Fil Line  
ROI Realty Services, Inc

614.221.2500

[bill@roirealty.com](mailto:bill@roirealty.com)/[fil@roirealty.com](mailto:fil@roirealty.com)

