

# SOYBEANS

**S13-H5** BRAND

**NEW**

RM:  
1.3



**SCN SOLUTIONS.**

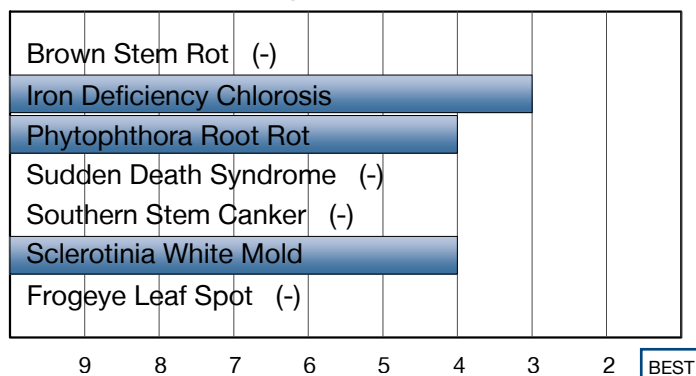
## EXCITING YIELDS AND SOYBEAN CYST NEMATODE PROTECTION

- Strong Iron Deficiency Chlorosis tolerance
- Strong emergence for good stand establishment
- Excellent standability for ease of harvest

### Plant Characteristics

Plant Height	<b>Medium-Short</b>
Canopy/Plant Type	<b>Medium-Bush</b>
Branching	<b>Moderate</b>
Growth Habit	<b>Indeterminate</b>
Flower Color	<b>Purple</b>
Pubescence Color	<b>Light Tawny</b>
Pod Color	<b>Tan</b>
Hilum Color	<b>Black</b>






### Disease Ratings



### Agronomic Traits

Emergence	<b>3</b>
Standability	<b>2</b>
Shatter Tolerance	<b>-</b>
Stress Tolerance	<b>4</b>
Green Stem	<b>4</b>
Estimated Seed Size	<b>Large</b>
% Protein at 13% mst.	<b>39.2</b>
% Oil at 13% mst.	<b>19.4</b>
Narrow Rows	<b>1</b>
Wide Rows	<b>3</b>

### Adaptation to Soil Types

Drought Prone	
High pH*	
Highly Productive	
Moderate/Variable Environments	
Poorly Drained	

### Diseases and Pests

Phytophthora Root Rot (PRR) Source	<b>Rps1c</b>
Soybean Cyst Nematode (SCN) Races	<b>R3, R14</b>
(SCN) Source	<b>PI88788</b>

For more information or to view product performance data: [www.nk-us.com](http://www.nk-us.com) (800) 258-0521 Or, follow NK on Twitter @SyngentaUS or Facebook (Facebook.com/FarmAssist).





 **Soybeans**

**syngenta**<sup>®</sup>

Ratings are based on interpretation of data gathered by Syngenta and/or observations across areas of adaptation and may change as additional data are gathered.

©2015 Syngenta, NK®, SCN Solutions™, the Alliance Frame and Syngenta logo are trademarks of a Syngenta Group Company. Genuity®, Genuity and Design, Genuity Icons, and Roundup Ready 2 Yield® are registered trademarks of Monsanto Technology LLC used under license. NK Soybean varieties are protected under granted or pending U.S. or Canadian variety patents and other intellectual property rights, regardless of the trait(s) within the seed. Seeds containing the Genuity® Roundup Ready 2 Yield® trait may be protected under numerous United States and Canadian patents. It is unlawful to save Genuity® Roundup Ready 2 Yield® soybeans for planting or transfer to others for use as a planting seed.

1-9 Scale: 1 = Best, 9 = Worst, (-) = Not Available, NA = Not Applicable.

Icon Scale:  Best Choice  Good Choice  Average to Slightly Below Average  Not Recommended

\* Rating represents an assessment of stand establishment, chlorosis severity and yield performance