

# For Sale – Hwy 31 Hard Corner

125 US-31 N, Athens, AL 35611



## New Athens High School

## FOR SALE

### 2.43 Acre Commercial Lot

- High profile location at SW corner of Hwy 31 and Pryor St
- Only available hard corner
- Adjacent to new \$55MM Athens High School and new \$10MM Athens Bible School
- Combined enrollment of Athens High School, Athens Bible School, and repurposed Middle School will total over 2,000 students
- Significant capital investment and residential growth along this busy corridor
- Located near 58 acre Planned Mixed Use Development offering 180 new residential lots and adjacent City Park

For more information, please contact:

**William Ming**

Phone: 256-232-3001 Email: [wming@mingenterprises.com](mailto:wming@mingenterprises.com)  
[www.mingcregroup.com](http://www.mingcregroup.com)



**William Ming**  
[wming@mingenterprises.com](mailto:wming@mingenterprises.com)

Ming Commercial Real Estate Group  
116 North Marion St., Athens, AL 35611  
Phone 256-232-3001 Fax 256-232-6744

# For Sale – Hwy 31 Hard Corner

125 US-31 N, Athens, AL 35611



## Athens, Alabama A City on the Move!

- Delineated Retail Trade Area includes approximately 82,000 people with 30,000 households and Median HHI of \$48,000.
- Located 10 miles away from future \$1.6 billion Toyota-Mazda plant.
- Serves a 10 mile + trade area including southern Tennessee and travelers along I-65 m Hwy 72 and Hwy 31.
- 22nd largest city in Alabama out of 454 cities ranked by U.S. Census Bureau.
- Limestone County ranked as 3rd fastest growing county in Alabama by U.S. Census Bureau and #66 out of Top 100 nationwide.
- Considered to be a “city on the edge” due to its proximity to Huntsville, AL MSA, which has one of the highest median incomes in the Southeast due to its technology centered employment base. Athens, AL provides the community quality of life desired by today’s consumer with high paying jobs less than 30 minutes away.
- New \$55 million Athens High School
- New \$10 million Athens Bible School
- New \$18 million Rec Center in planning phase
- Ranked No. 3 Best County to raise a family in Alabama
- Ranked No. 1 Safest County in Alabama
- Ranked No. 3 Best County for Job Opportunities in Alabama

2018	5 Mile Radius	7 Mile Radius	10 Mile Radius
Population	32,103	44,788	75,653
Households	13,099	17,868	28,317
Median HH Income	\$46,546	\$47,095	\$53,363
Median Age Population	39.2	38.5	37.7
Average Persons Per HH	2.40	2.46	2.56



William Ming  
[wming@mingenterprises.com](mailto:wming@mingenterprises.com)

Ming Commercial Real Estate Group  
116 North Marion St., Athens, AL 35611  
Phone 256-232-3001 Fax 256-232-6744





**FOR SALE**  
**2.43 ac**

212'

120'

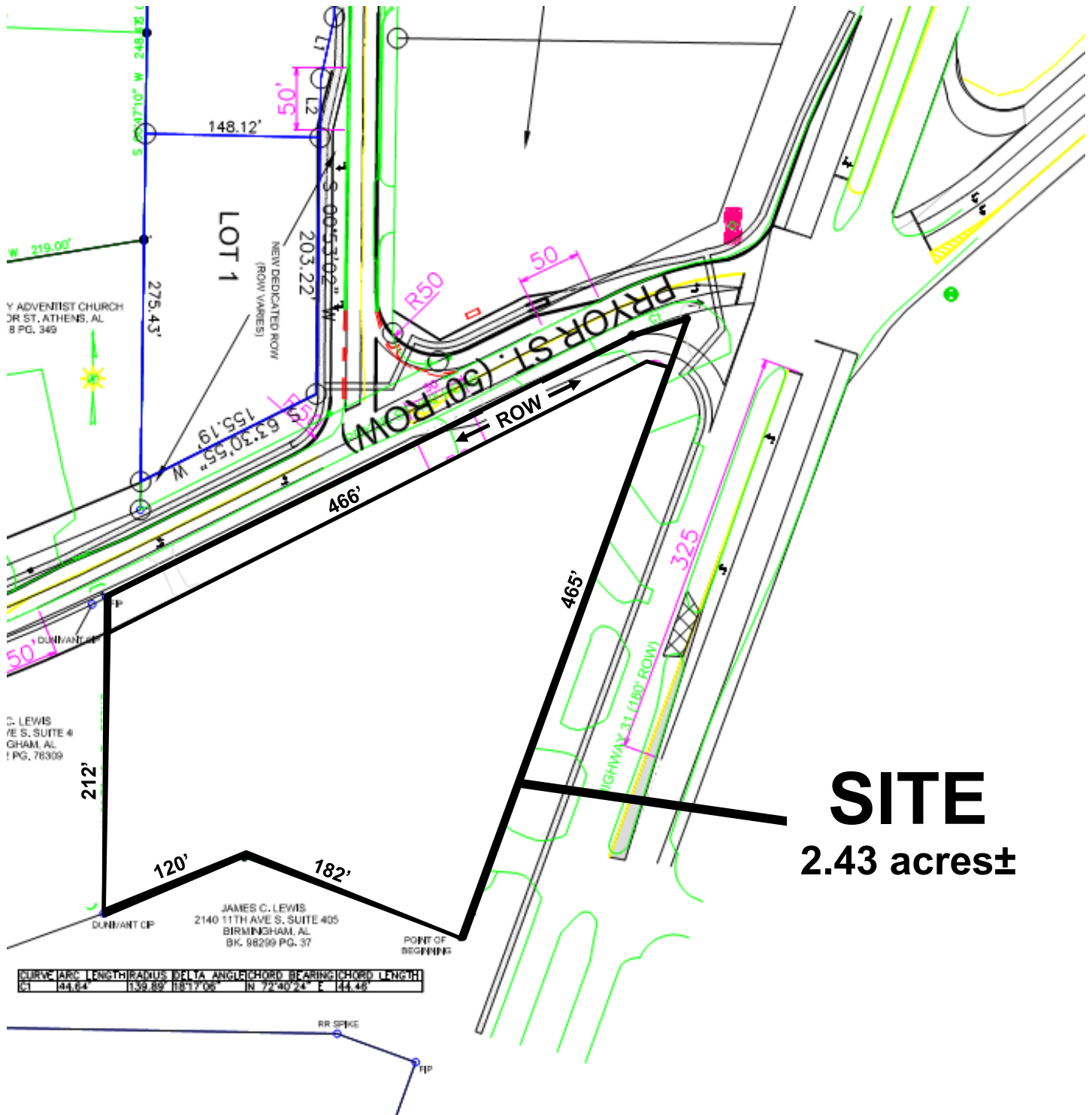
182'

466'

465'

PRYOR STREET  
31

U.S. HIGHWAY 31



**SITE**  
**2.43 acres±**