

Arielle DeNovo

“AMERICA 2.0: ARTISTRY”

A hyper-intelligent young woman on a divine mission to save America & humanity from itself...

The most consequential, awe inspiring & diversely entertaining motion picture ever conceived...



Confidential & Proprietary
Copyright © 2021
Donald G. Skipper
www.renaissancestudio.org

Arielle DeNovo
A master of artistry in all dimensions

“America 2.0: Artistry” Project Summary

“The most consequential & diversely entertaining movie ever conceived.”

“Arielle DeNovo is a hyper-brilliant young woman from Crimea who is a master of artistry in all dimensions. She is on a “mission impossible” to save America and humanity from itself before terrifyingly plausible calamities unfold.”

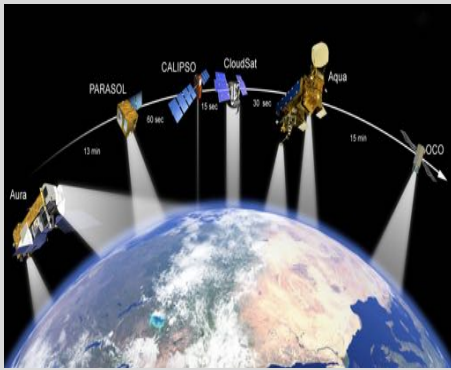
“America 2.0: Artistry” (“A2A”) is a historic attempt to use entertaining cinema to 1) deliver a hard reality check on the very serious problems that everybody faces together and 2) reveal an exciting vision of a new era of common sense unity and prosperity that will benefit everyone.


The exciting vision of this film will insure strong earnings for “A2A” that will enable the launch of a new movie studio that is designed to convert the initial \$15 million equity investment in “A2A” into a **\$6+ billion IPO windfall** for investors in year 5.

The Renaissance Studio, Ltd. (“RSL”) Executive Summary can be found at the link below:
<http://nebula.wsimg.com/7572555c37e24b3755ae0de504f4b7b3?AccessKeyId=9E533268DA51246EF35E&disposition=O&alloworigin=1> (You may have to copy the link and paste it into your browser.)

Key Data – See “TEASER” video at: <https://youtu.be/6gTs2WDAIOE>

- Screenplay Title: “America 2.0: Artistry” WGAW Registration #: 1648504
- Author: Donald G. Skipper - 100% - Owner: Donald G. Skipper - 100%
- Genres: **Action/Adventure/Thriller/Clandestine/Artistry**
- Anticipated MPAA Rating: **PG-13**
- Profile: **Very high concept & epic scope with historic implications**
- Genre Revenue Ceiling– **Box office & DVD: \$1.2 billion – “Skyfall” 2012**
- Genre Revenue Average – **Box office & DVD: \$410 million since 2006**
- Production Budget: **\$35 million** Equity Capital Requirement: **\$15 million**
- Franchise Potential: “America 2.0” is the first film in a fully written “Pentalogy” with “**Treachery**”, “**Mastermind**”, “**Resurrection**” & “**Cataclysm**”.
- Demographic Profile: **Very broad – Targets all adult age & gender demographics**



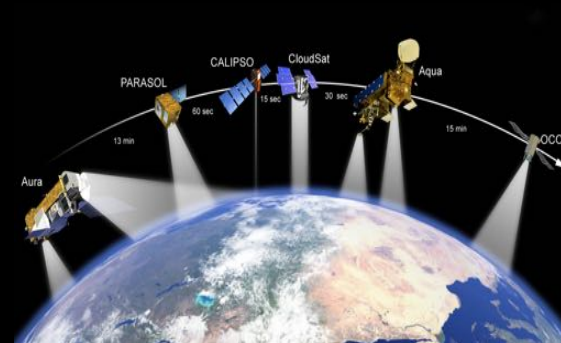
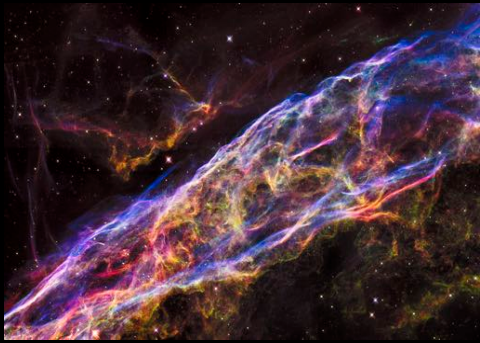
The background of the entire image is a stylized American flag with stars and stripes. The top portion is dark blue with white stars, and the bottom portion is red and white stripes.

Arielle DeNovo

AMERICA 2.0

Unleashing a New Era of Common Sense Unity & Prosperity





Clandestine Thriller





ARTISTRY



The Arielle DeNovo Concept



Arielle DeNovo was conceived as a captivating and multi-dimensional character who could drive a major new film franchise in the political thriller/superhero/action genre.

- Introduce Arielle to fill the female lead protagonist void in the “James Bond”, “Jason Bourne” and “Mission Impossible” genre outside the pure fantasy “superhero” realm.
- Have her engage in thought provoking and terrifyingly plausible scenarios rather than the shallow contrivances and gratuitous action streams that dominate the genre.
- Make the extreme brilliance of her mind be an almost supernatural ability that allows her to master artistry in every realm.
- Have her display awe inspiring performance artistry as an ongoing driver of the action and story progressions at levels that audiences have not seen before.
- Target global, adult male audiences with a sensational female protagonist who triggers all the attraction elements in the heterosexual male psyche.
- Target the global adult female audience with a female lead character that projects all the most sensational attributes of modern femininity as she takes charge in a dysfunctional man’s world to trigger a reformation that resolves everything.
- Make her mind, her cunning, her higher awareness and her resourcefulness her primary weapons instead of gratuitous violence and brutality.
- Use these attributes as a basis for reducing production costs while reaching the much larger “disaffected” audiences who comprise above 85%+ of adults. These discriminate audiences want to be inspired, emotionally engaged and mentally challenged.
- Allow Arielle to have a broad psychological range that creates a profound emotional engagement with the audience. Use this and her physical beauty, intellect and resourcefulness to captivate audiences in a broad demographic and cultural range.
- Use realistic modern world geo-strategic threats as the context for the antagonists rather than contrived Hollywood “bad guys” with shallow motivations.

A key is for Arielle’s high intellect and artistry to transcend her amazing physical beauty.



**ARIELLE
DENOVO**



The Arielle DeNovo Profile

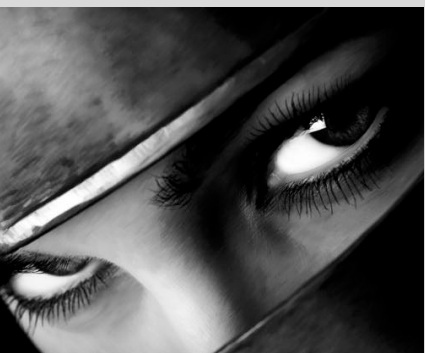
Modern cinema and culture are largely devoid of exciting and positive feminine protagonists & role models. Arielle DeNovo is designed to display the most positive attributes of modern femininity as a means to attract large audiences:

- Extraordinary intelligence & omniscience
- A master of artistry in all realms
- Captivating and sophisticated natural beauty
- Exudes an irresistible but subtle sensuality
- Higher awareness – prescient & insightful
- A virtuoso in the cyber, martial and clandestine arts
- Emotional maturity & Insightful life priorities
- Emotionally vulnerable and psychologically troubled
- Broad emotional depth & range
- A compelling presence that transcends beauty
- Romantically reserved but not invulnerable
- A force to be reckoned with on all levels
- Extreme courage & determination
- Awe inspiring in all dimensions
- A woman who dominates in a dysfunctional man's world

While the above profile may seem impossible in the real world, cultural transformation often begins with the appearance of extraordinary characters that can reset cultural norms & expectations.

Men, women and young adults are naturally attracted to all these attributes in women. These traits will also transcend cultural differences to attract global audiences.

Arielle is a character that men & women will enjoy and want their daughters to emulate as a role model. This is the foundation of her powerful cinematic appeal.

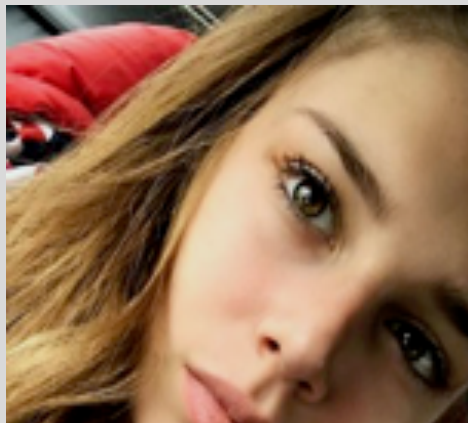




VENUES



“America 2.0: Artistry” Synopsis



ARIELLE



BRIT



ANTON

It is 2025 and America is on the verge of major social, political, geopolitical, economic, inflation and fiscal calamities as new President Foster takes office in near anarchy.

- Arielle is a hyper-intelligent young woman from Crimea. She possesses a supernatural ability to see the “big picture” of all things and to master artistry in all realms from the performing/martial arts, to science, to the cyber world and geopolitics.
- Arielle travelled to MIT as a teenager, mastered its scientific curricula and redirected it into sensational new realities in all dimensions. Her work caught the attention of the geopolitical community and Anton Shekov.
- Anton is a hyper wealthy Crimean who made his fortune by triggering the 2008 economic catastrophe. He sold short just before setting of the stock market collapse, went long at the bottom of the market and made over a trillion dollars in the process.
- Anton hired the most brilliant code writers in the world to help him create a global system that could control or destroy all satellites, power systems, the internet, markets and computer systems. His goal is to force a global reformation on his terms.
- Anton has invested a fortune in his system but it has complex defects that he cannot resolve. In a series of exciting action scenarios, Arielle cleverly eludes Anton as he tries to seize her to optimize his systems.
- The CIA contracted with Anton to use parts of his system for their purposes but he goes rogue. The CIA enlists Arielle to co-opt his system so that they can control it.
- Arielle is coerced into CIA training where she dominates everyone in humiliating ways and redesigns to optimize their systems and training processes.
- Arielle travels to the Paris Opera where she puts on a fantastic dance performance.
- Arielle cleverly allows herself to be kidnapped to Crimea. She seduces him in awe inspiring ways to gain full access to his system. She creates back door portals that she can manipulate. She discovers that Richard, the CIA director, has dark and illegal motives in wanting to control Anton’s system and she sees the danger of the system in the wrong hands. So Arielle escapes from Anton’s and the CIA’s control.
- Anton is obsessed with Arielle’s otherworldly attributes and talents. He freaks out when she escapes and sends his mercenaries to seize her in the USA.

“America 2.0: Artistry Synopsis (Cont’d)

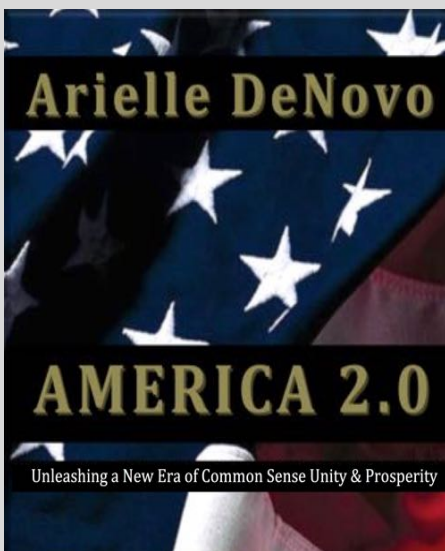


GREG



- Anton’s men kill Arielle’s mother and Arielle is hospitalized with a severe concussion. She awakens to extreme despair that causes her to engage in a spectacular and death defying Parkour display on the rooftops of the hospital complex in a lightning storm.
- Brit is a CIA agent who recently witnessed the murder of her father. He was the CIA station chief in Kiev and was about to reveal Richard’s illegal activities to the FBI.
- Richard blames Anton for the death of Brit’s father. He sends Brit to seize Arielle at the hospital. They form a bond and Brit invites Arielle to her mansion. Arielle informs Brit that the Richard had her father killed to cover up his illegal activities with Anton.
- President Foster, the Kremlin and the Beijing leadership all learn about Arielle’s knowledge and access to Anton’s system and send agents to seize her.
- Brit, Arielle and Brit’s CIA boyfriend Greg elude everyone in an exciting chase sequence through D.C. They escape to the Caribbean by yacht where Richard tracks them down. They miraculously escape Seal Teams and find sanctuary in Israel.
- Richard targets Anton. Anton kills Richard in his Langley office with a satellite laser that causes global alarm. Anton blames Arielle for the murder in the press so all the clandestine services are chasing her to control her and his systems.
- Anton takes refuge in the remote mountains of Tibet where he is protected by a rogue Chinese General Chang who has China and global dominance ambitions. Chang orders a “terror” explosion in Jerusalem to kill Arielle to stop her interference with the system.
- The blast kills Brit and Greg and puts Arielle into a hopeless coma. Chang blames the explosion on Anton to control him and incite the IDF to send its new Mach 5 FXX stealth jet fighter to kill Anton in Tibet. Chang wants to steal the FXX technology and dominate the global skies in tandem with Anton’s system.
- Arielle emerges from the coma through a mysterious divine intervention. She falls into extreme despair over the deaths of Brit and Greg. General Brecher of the IDF persuades her to help stop Anton and his system.
- Arielle realizes that she must go to Anton’s refuge in Tibet to secure a copy of the source code for Anton’s system and destroy the primary source code. If she fails, Chang will achieve his global dominance ambitions. If she succeeds she will control the code and the destiny of the world for good purposes.

“America 2.0: Artistry Synopsis (Cont’d)



- In a harrowing adventure, Arielle employs the FXX to succeed in her mission to Tibet. Her escape is aided by a mysterious reappearance of Greg in a second FXX. She returns with the source code and Anton to her refuge in Israel where she perfects the code with Greg’s assistance. Anton is imprisoned by the Israelis but assists Arielle.
- Chang is executed by China for treason but all of the clandestine services of the world desperately want to control Arielle and the system.
- Arielle returns to the USA in disguise to confront President Foster but falls into deep despair over the losses of her mother and Brit. Greg appears and helps her elude more Seal Teams. She destroys a ruthless Russian agent who tries to rape and kidnap her.
- Arielle chooses President Foster’s very handsome and brilliant son, Chase, as a much needed romantic and passionate distraction from her “mission impossible”. He also becomes a clever accomplice in her scheme.
- Arielle uses Anton to set off a blackout in D.C. to aide her clandestine entry into the President’s quarters at the White House. She confronts President Foster with a fate accompli. He must embrace and execute her America 2.0 agenda for an American reformation that will end the partisan and geopolitical madness to unleash a new era of common sense unity, global reconciliation and prosperity or experience the devastation of a global networks shut down by her system.
- The President is irritated but is transformed by Arielle’s persona and her mastery of political artistry in her common sense America 2.0 agenda. He is excited about its brilliant vision of the future that will free America and humanity from the tyranny of the global elites and make him the most consequential President since George Washington.
- President Foster reveals the America 2.0 agenda to a joint session of congress and the world audience and it is met with universal acclaim outside of the self-serving elites.
- Arielle seemingly wins her freedom to live a normal life in pursuit of her artistry in all dimensions.
- Greg stuns Chase by revealing Arielle’s true nature as a supernatural being that has been the guardian of the advance of human civilization and technology since Earth was first discovered by the “other” dimension...

“The Arielle DeNovo Pentalogy”

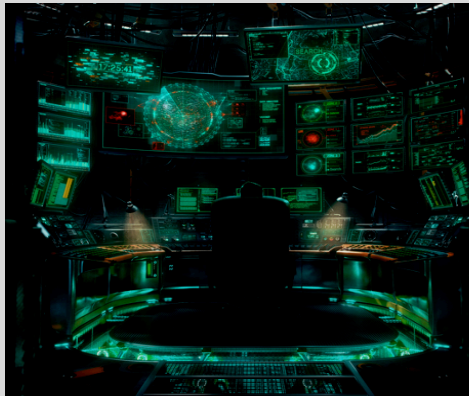


“Arielle DeNovo” has been conceived as a character that will drive a major film franchise that can endure much as “James Bond” has done. The “Arielle DeNovo” character is well suited to long term franchise endurance. The first four sequels to “America 2.0: Artistry” have already been written.

“Treachery”

The “America 2.0” reformation agenda triggers a violent backlash from the global military industrial complex and elites who benefit from the status quo.

Arielle discovers that she was separated from her twin sister, Talia, at birth and they are on the run from the full might of the CIA and USA military.



“Mastermind”

Abu Saïda is the mastermind of international terror who murders Talia and everyone Arielle cares about in an attempt to seize her global control systems. His plan is to trigger a nuclear confrontation between Russia and America that would leave him free to control the remainder of humanity in the name of radical Islam.

“Resurrection”

Konstantin is a hyper wealthy Russian oligarch and Abu Saïda’s brother. He destroys the Russian leadership and seizes control of parts of it’s nuclear arsenal to control the world. The situation is so serious that the “Other Dimension” permits the resurrection of Talia with certain supernatural abilities that are key to defeating him. In the end, Arielle must destroy over 30 nuclear missiles after they are launched.



“Cataclysm”

Konstantin’s partner in the Russian military, General Markov, launches a nuclear first strike on the western world and Asia that plunges humanity into a nuclear humanity. Talia must return to her supernatural origins on an impossible mission to turn back time. Arielle leads a real world response that is vital; to trigger the time reset.

The Global Market Opportunity



KEY TARGET MARKETS

Men - Attractions

- The story/The big issues
- Arielle's attributes
- Arielle's intellect
- Educational for their kids
- Positive role models for kids

Women - Attractions

- The story/The big issues
- Arielle's strong persona
- Arielle's feminine attributes
- A woman dominating her world
- The emotional progression
- Educational for their kids
- Positive role models for kids

Adolescents - Action/Thriller

Family movie - Adolescent level

Seniors - The story/The big issues

Global - Action/The big issues

Almost everyone likes movies but is also familiar with the recurring frustration of searching the movie listings and finding nothing that inspires them to go to the theater. As a result, 90% of possible movie goers in the USA saw about 3 movies on average in theaters in 2019 out of 835 theatrical releases in the USA.

The global market for movies is over \$88 billion annually and the only major constraint on increasing that number is the supply of high quality films that engage the human heart, mind and spirit in profound and poignant ways.

RSL was devised to create exciting, high concept and relevant films that will inspire these great "disaffected" audiences to attend movies more often. The "Arielle Denovo" franchise is designed to achieve this goal.

The potential global audience for "America 2.0: Artistry" could be exceptional if it succeeds in connecting audiences that will be captivated by the terrifying plausibility of the scenarios and the power of the Arielle's persona.

Arielle will be marketed as a captivating female protagonist in the "Jason Bourne" and "James Bond" genre. This may be the most consistently profitable genre in cinema with a long history of successful franchises and average global box office and DVD revenues of \$410 million since 2006.

Arielle's is designed to project a compelling contrast to her male predecessors through her artistry, her many attributes and her ability to use her sensational mind to engage real world problems rather than "Hollywood" contrivances.

The story and her character are carefully designed to appeal to men, women and their older children with an attraction that transcends cultural differences to reach broad global demographics and inspire large theater attendance.

This thought provoking film is structured to achieve profound emotional and intellectual engagement of the audience without resorting to costly CGI and endless action sequences that do little to enhance the story progression. It deals with subject matter that could not be more compelling or relevant.

Please consider "America 2.0: Artistry" in comparison to the current movie listings to get a feel for its huge box office potential.

Investment Comparables

Below is a summary of major films in the America 2.0: Artistry genres since 2006:



Movie \$ Millions	Global Box Office & DVD	Production Budget	Prints & Advert.	Theater Take	Est. Gross	Distrib Fees	Est. To Equity
Casino Royale	\$679	(\$102)	(\$40)	(\$340)	\$197	(\$51)	\$146
Mission Impossible	\$448	(\$150)	(\$60)	(\$224)	\$14	(\$34)	(\$20)
Bourne Ultimatum	\$567	(\$130)	(\$50)	(\$284)	\$103	(\$43)	\$60
The Kingdom	\$121	(\$73)	(\$30)	(\$60)	(\$42)	(\$9)	(\$51)
Quantum Solace	\$646	(\$230)	(\$75)	(\$323)	\$18	(\$48)	(\$30)
Knight & Day	\$294	(\$117)	(\$60)	(\$147)	(\$30)	(\$22)	(\$52)
Salt	\$345	(\$130)	(\$70)	(\$172)	(\$27)	(\$26)	(\$53)
Green Zone	\$116	(\$100)	(\$50)	(\$58)	(\$92)	(\$9)	(\$101)
The Tourist	\$301	(\$100)	(\$50)	(\$150)	\$1	(\$23)	(\$22)
Ides of March	\$88	(\$23)	(\$20)	(\$44)	\$1	(\$7)	(\$6)
Ghost Protocol	\$740	(\$145)	(\$70)	(\$370)	\$155	(\$56)	\$100
Safe House	\$245	(\$85)	(\$40)	(\$122)	(\$2)	(\$18)	(\$20)
Act Of Valor	\$123	(\$12)	(\$10)	(\$61)	\$40	(\$9)	\$31
Hunger Games	\$888	(\$80)	(\$40)	(\$444)	\$324	(\$67)	\$257
Skyfall	\$1,205	(\$200)	(\$75)	(\$602)	\$328	(\$90)	\$238
Bourne Legacy	\$332	(\$125)	(\$60)	(\$166)	(\$19)	(\$25)	(\$44)
Zero Dark 30	\$165	(\$53)	(\$30)	(\$82)	\$0	(\$12)	(\$12)
Catching Fire	\$1,061	(\$130)	(\$50)	(\$530)	\$351	(\$80)	\$272
Jack Ryan	\$132	(\$60)	(\$35)	(\$66)	(\$29)	(\$10)	(\$39)
3 Days To Kill	\$32	(\$28)	(\$25)	(\$16)	(\$37)	(\$2)	(\$39)
Spectre	\$916	(\$300)	(\$80)	(\$458)	\$78	(\$33)	\$45
Jason Bourne	\$448	(\$120)	(\$45)	(\$224)	\$59	(\$24)	\$35
Rogue Nation	\$728	(\$150)	(\$75)	(\$369)	\$134	(\$55)	\$79
White House Down	\$233	(\$150)	(\$32)	(\$116)	(\$65)	(\$10)	(\$75)
Kingsman	\$435	(\$94)	(\$33)	(\$217)	(\$91)	(\$37)	\$54
Man From UNCLE	\$124	(\$75)	(\$30)	(\$62)	(\$43)	(\$10)	(\$53)
Olympus Fallen	\$189	(\$70)	(\$31)	(\$95)	(\$7)	(\$10)	(\$17)
London Fallen	\$211	(\$60)	(\$35)	(\$105)	\$11	(\$10)	\$1
Jack Reacher	\$244	(\$60)	(\$34)	(\$122)	\$28	(\$12)	\$16
Jack Reacher 2	\$173	(\$60)	(\$34)	(\$86)	(\$7)	(\$10)	
Wonder Woman	\$900	(\$150)	(\$45)	(\$450)	\$255	(\$105)	\$150
Totals	\$ 13,129	(\$3,362)	(\$1,414)	(\$6,565)	\$1,606	(\$957)	\$833
Averages	\$410	(\$105)	(\$44)	(\$205)	\$50	(\$30)	\$26
Am.2.0 Base Case	\$205	(\$33)	(\$24)	(\$96)	\$40	(\$10)	\$30
As % Genre Avg.	50%	(31%)	(55%)		84%		

The Investment Opportunity

Investment Attributes

- Modest budget - \$35 million
- Above \$1 billion revenue potential
- Extraordinary ROE potential
- 2 year recovery goal
- Short time frame to theaters
- Fills a major film market void
- Strong DVD/streaming profile
- Sustainable franchise profile
- 4 sequels already written
- Moderate/Managed risk profile

“America 2.0: Artistry” can be produced for \$35 million and globally distributed for \$20 million of P&A costs. The \$15 million equity request below is needed to insure the certainty of production and distribution and control of budgets, movie content and marketing.

The key to investment success in any film is keeping production budgets low while keeping production values high and insuring broad global distribution with strong financial control of the process. To achieve high ROEs, the story content must be designed to minimize costs and inspire large global audiences.

All RSI films are carefully designed to achieve these goals.

Please consider these possible ROE scenarios for “America 2.0: Artistry” on a \$15 million equity investment:

<u>Description</u>	<u>Est. Revenue</u>	<u>Est. ROE</u>
1. Estimated break even revenue	\$133 million	0%
2. RSL Base Case revenue - 50% of genre average	\$205 million	340%
3. Action/Thriller genre average of 32 films	\$410 million	980%

ROE assumes \$15 million of the \$33 million production/RSL overhead budget is equity. The genre average includes box office and DVD revenues only. Subsidies, presales, brand revenues, talent discounts, non-theatrical distribution and rights sales are all sources of revenue that reduce break even revenue and increase ROEs.

FILM INVESTMENT REALITIES

The above scenarios show the high risk and return profile of film investment. Any revenues less than the \$133 million (26% of genre average box office/DVD revenues) will result in losses for equity holders because all P&A costs must be deducted before equity receives income.

Any film investment involves high risk. RSL cannot guaranty any income or return of investment from “America 2.0”. No funds should be invested that cannot be lost in their entirety without investor hardship.

Market Acceptance

Cinematic Attributes

- High concept & epic scope
- Exciting Action/Thriller genre
- Strong conceptual premise
- Powerful thematic elements
- Broad demographic appeal
- Diverse cross cultural appeal
- Disaffected audience appeal
- Low production complexity
- Profound sociopolitical value
- Poignant emotional resonance
- Engaging characters
- Inspirational musical score
- Awe inspiring artistry
- Life relevant subject matter
- Romantic subtexts
- Arielle Denovo profile
- Broad resonance diversity

Strong market acceptance by broad spectrum global audiences is the major factor in the financial success of any film project. RSL will manage this risk on America 2.0 as follows:

- **A low production budget in a very high revenue average & ceiling genre**
America 2.0 is a very high concept, epic scope story with a \$33 million budget in a genre that averaged \$410 million in global box office/DVD revenues since 2006. The genre revenue ceiling is above \$1.2 billion.
- **Proprietary content evaluation metrics**
RSL has developed and employed advanced movie content evaluation metrics that skillfully avoid the 85%+ of movie concepts and profiles that lose money for production equity investors. 98% of movies that reach theaters would not meet the high “green light” standards of RSL.
- **Proprietary screenwriting methodologies**
RSL has created and employed advanced screenwriting methodologies that skillfully match a diversity of compelling resonance elements with the viewing preferences of broad spectrum, global demographics.
Every scene in “America 2.0: Artistry” has been evaluated and rated across a spectrum of 25 key resonance elements in the context of global demographic preferences to insure broad market acceptance.
- **Target the huge underserved global markets**
Everyone is familiar with the recurring frustration of wanting to view a movie, searching the listings and finding nothing that inspires them to go to the theater or view a film by other means. This strange reality exists because the movie industry systematically creates films that target less than 20% of the global audience while largely ignoring the viewing preferences of the other 80%. By contrast, “America 2.0: Artistry” targets the viewing preferences of up to 70% of global demographics.

The compelling concepts, content & characters in “America 2.0: Artistry” are designed to insure strong global market acceptance & profitability.

The Budgets

Risks & Offsets

Market Acceptance Risk

- Strong conceptual premise
- Broad global market profile
- Market study to be completed
- See “Attributes” on prior page

Distribution Risk

- Self-funding of P&A
- Powerful marketing profile
- See “Attributes”

RSI/Execution Risk

- See “The Execution Plan”

Completion Risk

- Will be bonded
- Sound production oversight
- Low production complexity

Budget Overrun Risk

- Strict budgetary oversight
- Investor fiduciary focus of RSI

RSL’s CEO has over 20 years of risk assessment and management experience as well as a strong commitment to RSL’s fiduciary responsibilities to investors. Every major risk has been identified and aggressively managed.

“America 2.0: Artistry” is a unique investment scenario because it can be produced on a total budget of \$33 million and has the potential to reach very large revenue levels if it makes a connection with the global audience.

<u>Description</u>	<u>Amount</u>	<u>Source of Funds</u>
1. Pre-Production Budget	\$ 1 million	Equity investors
2. Production Budget	\$ 30 million	Debt & equity investors
3. Post Production Budget	\$ 4 million	Presales, debt & subsidies
4. <u>Domestic P&A Budget</u>	<u>\$ 20 million</u>	<u>Distribution studio(s)/others</u>
Total 2.0 Budget	\$ 55 million	
5. <u>RSL Overhead Costs</u>	<u>\$ 3 million</u>	<u>Presales, debt & subsidies</u>
Total Budget	\$ 58 million	

Capital Requirements

Primary equity	\$15 million	Minimum
Presales, debt & subsidies	\$20 million	Estimate
Total Capital required	\$35 million	

How will RSL films compete in the action/thriller/claustrophobic genres that have averaged \$105 million budgets since 2006?

- Most films in these genres offer one dimensional characters immersed in shallow plot contrivances. They succeed or fail based on gratuitous and very high cost action, violence and computer generated effect sequences that generally appeal to less than 20% of the global movie audience.
- By contrast, “America 2.0: Artistry” features a sensational, multidimensional female protagonist who is immersed in a very exciting, triumph of the human spirit story that projects a diversity of compelling resonance elements. These elements engage audiences in the thought provoking, visceral, action, adventure, sensual, drama, thriller, emotional, audio, visual, life relevant and artistry dimensions that are much less costly to produce and appeal to a much wider spectrum of movie goers.
- Much lower costs and much broader market acceptance are the keys.

Important Process Notes



RSL is seeking a \$15 million primary equity commitment but the funds will only become available for expenditure on the following basis:

Disbursements on the closing date of the \$15 million equity commitment:

- To acquire an option on the “America 2.0” screenplay \$100,000
 - To complete project development on “America 2.0” \$500,000
- Total development advance \$600,000

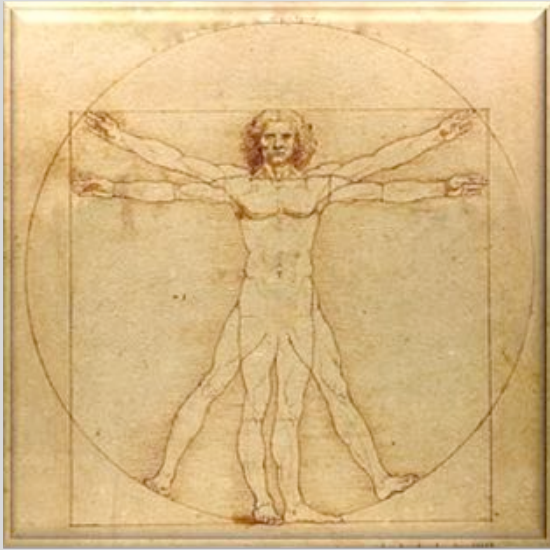
This \$600,000 advance and the \$15 million commitment should allow RSL to:

- Complete a full “package” with the final project plans, budgets and producer, director and key talent attachments for “America 2.0”.
- Secure government subsidy commitments from the proposed production venues.
- Secure domestic distribution commitments.
- Secure print an advertising funding commitments.
- Secure international distribution and rights presales.
- Secure a completion bond commitment for “America 2.0”
- Secure \$18 million of production financing commitments from subsidies, presales and debt sources.

If all of the above goals are met in the first 90 days, RSL will request the release of the remaining \$14.4 million of the primary equity commitment and proceed with the production of “America 2.0: Artistry”.

If all of the above goals are not achieved in 90 days to the satisfaction of the equity investors, RSL may 1) request an extension to complete the goals or 2) cease operations if an extension is not granted by the investors. Therefore, the primary equity investors will be at risk for \$600,000 if the goals above are not met. This is the minimum upfront cost to pursue the \$6+ billion IPO end game.

Renaissance Studio, Ltd.



Renaissance Studio, Ltd.

“The Future Of Filmmaking &
Investment.”

CONTACT INFORMATION

Donald G. Skipper – CEO

Don@RenaissanceStudio.org

<http://www.RenaissanceStudio.org>

Please see the RSL Executive Summary at:

<http://nebula.wsimg.com/7572555c37e24b3755ae0de504f4b7b3?AccessKeyId=9E533268DA51246EF35E&disposition=0&alloworigin=1> (You may need to copy & paste into your browser)

Renaissance Studio, Ltd. (“RSL”) is an audience and investor focused company that was created to exploit the many flaws in the film industry status quo. RSL is designed as an investor fiduciary medium for sourcing, developing, producing and distributing superior films that are carefully structured to appeal to large global audiences and deliver superior ROEs to insightful investors.

RSL is grounded in a comprehensive and exploitive, 170 page business plan to create a going concern studio that can compete with the major studios and produce a compelling IPO profile in year 5 that will deliver exceptional ROEs.

By design, RSL leadership is not comprised of industry “experts” with lengthy track records of losing money for investors. It consists of a CEO with 1) multi-decade experience in the capital markets that includes risk and business evaluations of countless firms in multiple industries through numerous economic and industry cycles and 2) over 25 years of screenwriting experience.

RSL has completed exhaustive financial research on the movie industry that includes financial evaluations of major producers, studios, directors and movies that achieved box office revenue above \$50 million since 2006. That data reveals that over 85% of producers, directors and major talent have lost money for equity investors in their careers to date. This reality severely discounts their value as guarantors of financial success in filmmaking and investment.

RSL writes and develops all of its own projects to match its filmmaking vision and capital markets strategy. RSL is not raising money to just produce movies. It is seeking primary capital to create maximum leverage to contract the optimum teams to execute the RSL business plan and movie projects.

RSL employs proprietary story origination and risk management methodologies that mitigate downside risks while preserving high revenue ceilings. Please invest the time to visit the link below for much more data on RSL:

Key Resonance Elements

- Emotional
- Visceral
- Intellectual
- Educational
- Life relevance/affirming
- Enlightenment
- Positive affirmations
- Sensual/Sexual
- Intimate/Poignant
- Conflict/Jeopardy
- Artistry/Athletic
- Action/Adventure/Thriller
- Spiritual
- Romance
- Humor
- Audio/Visual
- Clandestine/Geopolitical
- New & high concepts
- New talent
- Awe inspiring content

America 2.0 features all of the above elements that target a broad diversity of global demographics.

Content Metrics & Methodologies

“Movie Content Is over 85% Of The Financial Success Equation”

The ability to create superior movie content that resonates with broad demographics and large international audiences is the most vital element in successful filmmaking and investment. Please consider the following comments:

- RSL has invested a vast amount of time and resources on the R&D of proprietary methodologies for the writing and development of high concept movies that will resonate with broad global audiences.
- This process is not rocket science. It is a common sense analysis that most rational adults grasp at an intuitive level as they consider any movie listing. RSL has researched developed the process into proprietary methodologies. As one summary example, below is a link to a coverage summary on “America 2.0: Artistry” in comparison to “Spectre” & “Jason Bourne” that demonstrates how “America 2.0: Artistry” will compete successfully:

<http://nebula.wsimg.com/76dbc41c8520325af33c1d311eee63b3?AccessKeyId=9E533268DA51246EF35E&disposition=0&alloworigin=1>

1. An extensive evaluation of past films reveals that at least 8 out of 10 movies should never have been produced. Elimination of these projects dramatically reduces market acceptance risks.
2. The RSL projects have not been written by random screenwriters within flawed “Hollywood’ story writing and development processes that ignore global movie audience preferences and capital markets opportunities.
3. All RSL films can be produced on cost effective \$33 million budgets and all content is integrated with a compelling filmmaking and capital markets plan.
4. RSL produces triumph of the human spirit stories that project a positive alternative narrative to the gratuitous violence, action, sexuality, horror depravity and shallow story contrivances that dominate modern cinema.

The most valuable skill in film is the ability to conceive and craft a great stories and characters that will resonate with broad spectrum demographics. This is the core of the RSL value proposition to global audiences and capital partners.

Film Time Line

Months 1 - 2

- Market acceptance study
- Hire RSL staff
- Finalize producer
- Finalize director/Key cast

Month 2 - 3

- Locations scouting/finalized
- Casting and crew completed
- Pre-production ~ Script final
- Story boards final
- Lock production schedule
- Complete "package"
- Completion bond commitment
- Secure distribution/P&A
- Secure project funding

Months 4 - 9

- Complete pre-production
- Set construction
- Equipment/props/costumes
- Rehearsals
- Editorial & photography
- Principal photography

Months 10 - 13

- Post production/Editing
- Editorial first cut complete
- Finalize sound, music, score
- Marketing/Press kit done
- Final cut to distribution

Execution Profile

RSL is not comprised of film industry "experts" with lengthy film making resumes or expertise. RSL is led by a CEO with successful, multi-decade experience in the capital markets and extensive screenwriting experience. His profile includes risk and business evaluations of countless firms in multiple industries through numerous economic and industry cycles. RSL understands the film industry very well after years of exhaustive analysis.

There are many quality producers who could film "America 2.0: Artistry" with strong production values. Most have the following drawbacks:

1. They do not have strong track records of sourcing, developing and producing films that large global audiences want to see.
2. Their films almost never deliver superior ROEs to equity investors.
3. They exploit investors rather than reward them for the risk they take.
4. They engage in unsound risk and business management practices.

Most movie investors believe that it is important to invest in a "name" movie producer. This belief persists despite the reality that almost all "name" film producers consistently lose money for investors.

RSL does not currently have a production and distribution team in place for "America 2.0: Artistry". This reality is a function of the following factors:

1. Industry professionals respond to only one thing: Money in place.
2. RSL does not have the money in place to secure commitments.
3. Partnering with existing producers or professionals in advance is counterproductive to achieving RSL's ROE goals.
4. Deferring attachments until development funding will allow RSL to assemble the OPTIMUM execution team and casting to successfully execute the cinematic and financial vision.

RSL has many options for high quality producers and directors once the \$15 million of equity is committed. RSL will invest no production funds until a full "package" and top execution team is approved by investors.

Financial & Process Controls



RSL's innovative approach is designed to fully reward investors for the risks they take. Execution risk will likely be a significant concern of investors. RSL offers the following scenario to mitigate this risk:

- Potential investors review the full RSL business plan and complete their due diligence on “America 2.0: Artistry”.
- If investors embrace the RSL vision for “America 2.0”, investors would fund the \$600,000 development budget and offer RSL a proof of funds for the \$14.4 million balance that talent agencies would respect. The balance could be an escrow deposit, a contractual commitment or negotiable letter of credit.
- In development, the RSL team would select a producer and director and negotiate with agencies, talent, distributors and capital sources to complete the project “package” that includes business, production, marketing, casting, distribution project funding plans and budgets for “America 2.0: Artistry”.
- RSL secures a positive market analysis for “America 2.0: Artistry”.
- If the investors approve the execution team, plan, budget and market analysis for “America 2.0: Artistry”, \$14.4 million of the production/RSL overhead funds would be advanced into an escrow account with an escrow agent designated by the investor(s).
- RSL would prepare escrow draw requests that would be tied to specific performance requirements in the budget for review and approval by the escrow agent as “America 2.0: Artistry” moves forward.
- RSL will conduct screenings of the final cut of “America 2.0: Artistry” to validate its audience acceptance factors prior to requesting the funding of the \$30 million of the budget to finance P&A expenses.

This structured approach is far superior to relying on existing “Hollywood” producers that are committed to the flawed Hollywood story development and business practices that seldom produce superior ROEs for investors.

It also insures that RSL's alternative vision is implemented and safeguarding investor capital and interests remain the top priorities.

Project Execution Talent



Upon receipt of the funding commitment from the investors, RSL will negotiate with top producers, directors, casting agents and line producers to assemble a high quality and cost effective execution team for “America 2.0: Artistry” for investor approval. This superior approach provides RSL with the leverage to contract the optimal leadership team on the best terms for the project rather than settling for the only available teams prior to a funding commitment.

“America 2.0: Artistry” plausibly projects huge financial, historic & Oscar potential as the most consequential & diversely entertaining motion picture ever conceived. These realities will attract top quartile talent & execution teams.

RSL will strive not to contract with producers, directors and major “A List” talent who are unwilling to defer a substantial portion of their compensation to the “back end” of the project. Unlike most major studios, RSL will offer full financial transparency to create confidence that the “back end” will be fair. This and the modest RSL film budgets with strong global resonance profiles should induce talent to defer compensation. This approach has the following advantages.

- It converts talent into substantial investors and ties their income to earnings.
- It motivates talent to perform and promote the movie at their highest level.
- It reduces investor capital at risk and downside project risks.

All RSL producers, directors and line producers must embrace the RSL filmmaking and project visions that are focused of delivering cost effective films that will resonate with very large international audiences.

They must also be able to focus on the vital importance of conveying intellectual, emotional, visceral, sensual, intimate, poignant, romantic, artistic, audio and visual resonance elements that place a priority on audience engagement.

RSL will not permit reliance on gratuitous action, CGI, violence, sexuality, horror or depravity over compelling story telling with multidimensional characters and innovative/exciting dramatic progressions.

“America 2.0” Casting



Alicia Vikander

- + Brilliant actress with range
- + Exudes intellect/sensuality
- + Well established
- + Trained ballerina
- + Oscar winner – The Danish Girl



Aleksandra Soldatova

- + The camera loves her
- + Can project high intellect
- + Infectious personality
- + World champion gymnast
- + Multi dimensional artist
- + High pressure performer

Cost effective casting is vital to creating a superior cinematic experience for audiences and to maximizing ROEs to “America 2.0” investors. The best stories with a multitude of powerful resonance elements are only as good as the abilities of directors and actors to grasp the concepts and translate them into performances that engage and inspire large global audiences on many levels.

Directors and actors deliver their best performance when they are provided with superior content that inspires them to perform at their highest level. “America 2.0” offers a multitude of resonance elements that are designed to resonate with large global audiences. Those same elements represent opportunities that challenge and inspire directors and actors as well. Top talent is more likely to limit their compensation if they believe in the movie concept and their role in it. **Optimum casting cannot be finalized without a capital commitment in place.**

The “America 2.0” Producer & Director

There are a many high quality producers who could lead “America 2.0”. There is a smaller group of directors who could fully grasp and execute the “America 2.0” vision. **Kathryn Bigelow** (Oscar for “Hurt Locker” & Director of “Zero Dark 30”) and **Kevin Costner** (2 Oscars for “Dances With Wolves”) would be the top choices as producer/directors. RSL is confident that the right producer and director will be available with the capital commitment in place. **No production funds will be spent until a strong producer & director are in place.**

Arielle Denovo

The nature of the story and characters in “America 2.0” will provide a large pool of actor options. The one exception is the lead character Arielle. Arielle is a very complex and demanding character. She must project a strong intellect, a broad and believable emotional range, a commanding and captivating screen presence, athletic abilities, gracefulness and a natural sensuality.

The list of actresses who match this description in the 18 – 30 age range is small. Great care will be taken in choosing the actress to lead this major franchise. **The actresses to the left of this page are reference points only. An exhaustive search will be conducted to find the ideal actress to play Arielle.**

Risk Management

RSL Commitments

RSL is laser focused on creating exceptional movies that will deliver superior ROEs to global audiences and RSL investors. To achieve this goal, RSL will employ the most advanced creative, marketing and risk management methodologies and controls to limit downside risks, optimize cost effectiveness and maximize ROEs.

RSL will offer independent accounting oversight and full financial transparency to all its investors.

Good faith is a cornerstone of the RSL business philosophy.

All RSL films will endeavor to project a positive alternative narrative and offer an entertaining refuge in a very difficult world.

The RSL goal is to effectively limit the risks of capital loss while positioning investors to realize extraordinary ROEs. The goal is to create a compelling risk adjusted return profile that compare favorably to any investment alternative.

- Prior to commencement of production, RSL will generate foreign presales in certain smaller territories e.g., Eastern Europe, South America–Brazil, Australia, New Zealand etc., to 1) generate deposits, facilitate presales advances and 2) facilitate bankable sales estimates/advances for the remaining foreign territories and 3) validate market acceptance.
- RSL will package the film projects to fully exploit all available government rebates, subsidies and brand integration revenues (“Soft Money”).
- Soft Money revenues go can go straight to investment recoupment up to 50% or more of the production budget depending upon 1) the amount of brand integration opportunities written into the screenplay and 2) the availability of attractive rights presales.
- RSL’s will seek to induce talent to take “back end” equity participations in lieu of a significant portion of their traditional “front end” compensation. This approach converts talent into investors, motivates them to perform at their highest level and reduces downside risks for RSL equity investors. It also provides RSL with a competitive advantage versus other producers in securing the optimum talent on a cost effective basis.
- RSL’s modest budgets and superior content evaluation and screenwriting methodologies that are focused on powerful resonance elements that will attract large global audiences are the best hedge against downside risks.
- Over 98% of the movies that reach theaters would not meet RSL’s industry high “green light” standards.
- RSL’s will be able to return the \$15 million of primary equity to investors in year 2 if “America 2.0” earns 50% of the genre average box office/DVD revenues.

Return On Investment Summary

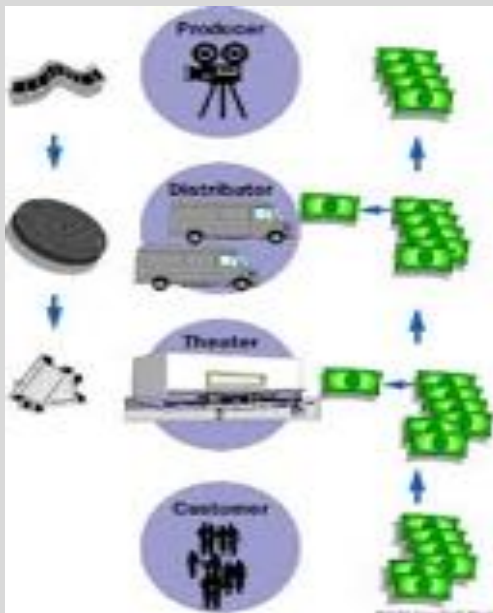


The following table summarizes estimates of the “America 2.0: Artistry” ROE profile based on proportions of the \$410 million genre average box/office/DVD revenues since 2006. Audience acceptance levels and actual revenues are unknowable so this data is not a prediction of actual outcomes. It represents a reasonable spectrum of goals and possible outcomes:

Description (\$ millions)	Break Even	Base Case 1	Case 2	Case 3
Primary equity	\$ 15	\$ 15	\$ 15	\$ 15
Less: RSL overhead	(\$ 3)	(\$ 3)	(\$ 3)	(\$ 3)
Less: “America 2.0” budget	(\$ 30)	(\$ 30)	(\$ 30)	(\$ 30)
Government subsidies	\$ 6	\$ 6	\$ 6	\$ 6
Debt & rights presales	\$ 12	\$ 12	\$ 12	\$ 12
Subtotal	\$ 0	\$ 0	\$ 0	\$ 0
Revenue as % genre average	26%	50%	75%	100%
Box office/DVD revenue	\$106	\$205	\$308	\$410
Rights sales/other rev. (25%)	\$ 21	\$ 45	\$ 67	\$ 89
Government subsidies	\$ 6	\$ 6	\$ 6	\$ 6
Less: Production budget	(\$ 30)	(\$ 30)	(\$ 30)	(\$ 30)
Less: RSL Overhead	(\$ 3)	(\$ 3)	(\$ 3)	(\$ 3)
Less: Advertizing	(\$ 25)	(\$ 30)	(\$ 35)	(\$ 40)
Less: Theater takes (55%)	(\$ 58)	(\$ 98)	(\$147)	(\$196)
Less: Distribution (30%)	(\$ 17)	(\$ 44)	(\$ 66)	(\$ 89)
Operating Income	\$ 0	\$ 51	\$ 100	\$147
Less: Income Taxes (20%)	\$ 0	(\$ 10)	(\$ 20)	(\$ 29)
Less: Return primary equity	\$ 0	(\$ 15)	(\$ 15)	(\$ 15)
Less: Earnings distribution	\$ 0	\$ 0	(\$ 30)	(\$ 68)
Retained earnings	\$ 0	\$ 26	\$ 35	\$ 35
Plus: Primary equity	\$ 15	\$ 15	\$ 15	\$ 15
Equity after America 2.0	\$ 15	\$ 41	\$ 50	\$ 50

The RSL goal is to return the \$15 million of equity after year 2 and retain earnings to produce its 4 sequels if “America 2.0: Artistry” earns 50% of the genre average box office/DVD revenues.

Distribution Strategy



“America 2.0: Artistry” cannot achieve RSL’s ROI goals without a global release.

Conventional distribution involves an agreement with a studio or distributor that is responsible for funding the print and advertising (“P&A”) budgets and distributing the film to theaters. There are several major issues:

1. Most studios and distributors will not consider a film until it is complete unless the producer has a production deal in place with them.
2. Production investors are often forced to take the risk that there will be no theatrical distribution and most of their investment will be lost.
3. Distributors often want input on the casting and story content. This forces films into the faulty industry practices that seldom inspire global audiences and lose money for production equity investors over 80% of the time.
4. P&A funds advanced by distributors and their up to 35% distribution fees must be recouped before production equity investors receive proceeds.
5. Distributors do not care if production equity investors make money. They just want to recover their costs and their fees.
6. The producer may have no control over the P&A budgets, the strategy of advertising or the number of theater locations that will be used.

RSL’s long term goal is to avoid these issues by 1) self distributing, 2) funding its own P&A expenses and 3) managing its own international advertising strategy and budget to insure broad, global, theatrical distribution at minimal cost. This approach requires the investment of more equity but this is well justified by increased distribution certainty, 30% lower costs and control.

Self-distribution is not feasible on a first film with a \$15 million equity commitment. Therefore, RSL will likely have to rely on a major studio or other distributor to distribute “America 2.0” and fund the \$30 million P&A expenses.

Once the \$15 million of equity is committed, it will provide the financial credibility to negotiate global distribution and P&A funding for “America 2.0: Artistry”.

Production funds will not be spent on “America 2.0: Artistry” until global distribution and P&A funding are assured.

Key RSL Executive



DONALD G. SKIPPER

A student of history, politics, religion, geopolitics, cultures, human nature, screenwriting, motion pictures, psychology, philosophy, sociology, business, markets, marketing, advertising, economics, risk, finance, technology, business, analytics, industries, education, advanced metrics and the capital markets.

Very unique experiences with international travel and interpersonal relationships in countless and diverse circumstances.

All of the above is an invaluable resource in creating exceptional story content and matching it to global audience preferences.

Donald G. Skipper - CEO

Key Skill Sets

- Over 30 years of successful experience in the capital markets/finance/marketing
- Seasoned strategic vision and judgment. Strong leadership and interpersonal skills
- Sees the big picture of complex situations and develops innovative solutions
- Strong imagination that devises “out of the box” solutions to difficult problems
- Extensive financial modeling, preparation and analysis
- Insightful ability to correctly evaluate the intrinsic merits of business profiles and devise innovative ideas that resolve issues and create competitive advantages
- Sound understanding of economics and geopolitics as they relate to business
- Persuasive, professional communicator
- Valuable insights derived from long term exposure to economic, business and capital markets cycles and to business models across multiple industries
- Proven team builder with strong project management skills
- Ability to analyze and convert innovative concepts into compelling business plans
- Access to a large network of capital sources and human resources
- Sound understanding of accounting and treasury management dynamics
- Lengthy operating and project management experience
- The skill to see the big picture of investor objectives and to devise transaction structures and business plans that maximize shareholder value
- Ability to see the core essence of complex situations and to evaluate business opportunities based on their intrinsic merit and commercial potential
- Extensive interaction with executive level decision makers and investors as well as analyzing corporate business plans, capital structures and financial models

Movie Industry

- Author of 21 motion picture screenplays and one published novel over 20 years.
- A decade of analysis and tracking of the movie industry and its capital markets.
- Developer of sophisticated evaluation metrics and screenwriting methodologies.
- Founder, CEO and author of Renaissance Studio, Ltd. business model and plan.