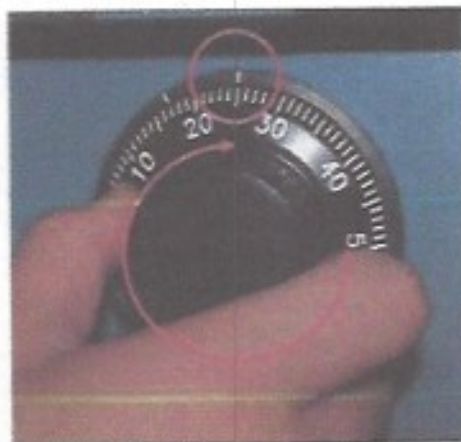


Option C. Dial Lock

How to open the mechanical combination lock

Make sure that this lock would be set 50-25-50 as factory default setting.

- 1) Turn to the counterclockwise for more than four times and set to "50."
- 2) Turn to the clockwise and stop at "25" at the third times.



- 3) Turn to the counterclockwise and stop at "50" at the second times.
- 4) Turn to the clockwise until the dial does not move any more.



Note: The center scale mark is used to open the safe unit

- 5) The safe door will open when turning the handle to counterclockwise.

How to set the new password

For example, let's assume that you would like to set the following number (10-50-70)

- 1) Open the safe door as described in the above.
- 2) To close the mechanical lock, turn the handle to clockwise with the door opening
- 3) Turn to the counterclockwise for more than four times and set to "50" at left scale indicator as shown in the Fig.9.1.
- 4) Turn to the clockwise and stop at "25" at the third time as shown in the Fig.9.2.
- 5) Turn to the counterclockwise and stop at "50" at the second times as shown in the Fig.9.3.



Fig.9.1



Fig.9.2



Fig.9.3

Note: The left scale mark is used to change the password.

- 6) Push the change bar completely until it is held by the dial change home (Fig.9. 4) inside the safe door and turn to the clockwise by 90 degrees (Fig.9.5).



Fig.9.4



Fig.9.5

- 7) Turn to the counterclockwise more than four times and position at left scale indicator to "10" (target number to change).
- 8) Turn to the clockwise for three times and position the scale to "50" (target number to change).
- 9) Turn to the counterclockwise for two times and position the scale to "70" (target number to change).



Fig.9.6



Fig.9.7

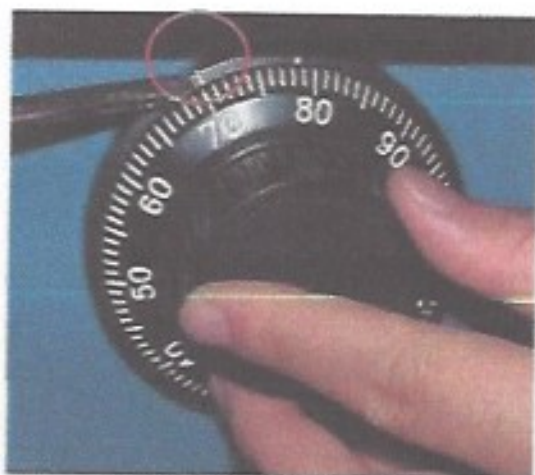


Fig.9.8

Note: Do not use number 25 – 35 as the last password number.

- 10) When password setting is completed, turn the change bar counterclockwise and remove it from the safe as shown in the Fig.9.9.

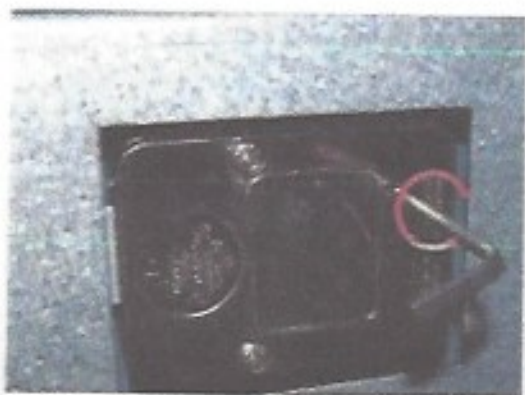


Fig.9.9



Fig.9.10

- 11) When password setting is completed, try to turn the dial more than a couple of times while the door is open to see if the door is opened or not. (Make sure to run the open/close test for at least two or three times.)
- 12) When all setting is completed, inform the password to the person in charge while paying attention to password disclosure or lost.

Note: Special attention must be paid and lost dial number cannot be restored.