



MaxPour® Supreme

TOUGH AND READY FOR ACTION

Nothing says "Supreme" quite like our **MaxPour® Supreme** playground surfacing. Constructed of fine-granule TPV (0.5 mm - 1.5 mm Rosehill TPV) and MaxPour® Aliphatic Polyurethane binder, our MaxPour® Supreme is tough and ready for the roughest duty.

The tight, highly dense top layer is made possible by using smaller granules than our standard MaxPour® system. This gives the system additional density and toughness, as well as a full 1/2" top thickness, leading to a longer service life.



To verify product certification visit www.ipema.org

MaxPour

(1–4 mm TPV granules and standard binder)



MaxPour Supreme

(0.5–1.5 mm TPV granules and aliphatic binder)



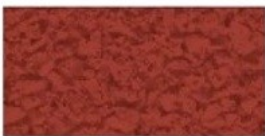
Specifier's Note:

MaxPour® Supreme is available in the four basic colors and black. The reason for this is that Rosehill currently imports to the US these basic colors only in the TPV 0.5 - 1.5 mm (small) granule size.

Other standard RoseHill TPV colors are available on a special-order basis, but would require an additional 8 weeks lead time to receive from the UK. Because of this, we think it makes sense to stick with the basic four colors and black. This to prevent project delays, color matching on revision work and other factors.



FIVE BASIC COLORS



Standard Red
RH01



Standard Blue
RH20



Standard Green
RH10



Beige
RH30



Black
RH70