



Wall Cap Forms

by

STEGMEIER CORPORATION

WALL CAP FORMS

Wall Cap Forms are available in five popular configurations. The standard length per box is 80 feet.

1. Regular "360" is 4.125" high with a 2 1/2" vertical face, a 3/8" radius at the top, and a 1 1/2" radius at the base.
2. Capstone "350" is 4.125" high with a 1 1/2" roll at the top, tapering back to the wall at the base
3. Mini-Cap "300" is 3.125" high with a 2" rolled edge in the center.
4. O-G "400" is 3.437" high with a 1 1/2" upper ball, 1/2" vertical surface and a 2" reverse concave roll back to the wall at it's base.
5. O-G "600" is 6.125" high, a larger version of the O-G "400" form.

Some common uses for Wall Cap Forms are to cap planters, patio walls, glass block walls, brick walls, columns, window ledges, and custom benches.

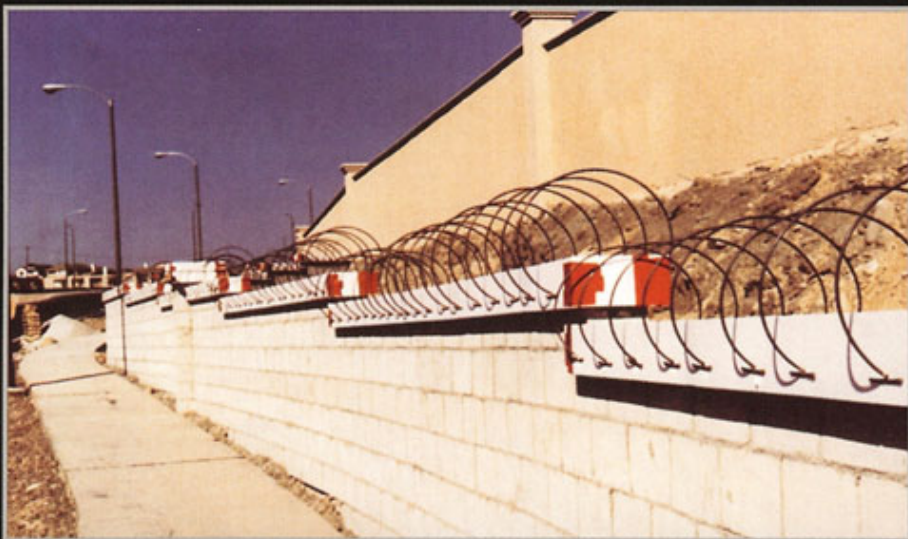
STEGMEIER 
CORPORATION

"We also manufacture custom shapes"

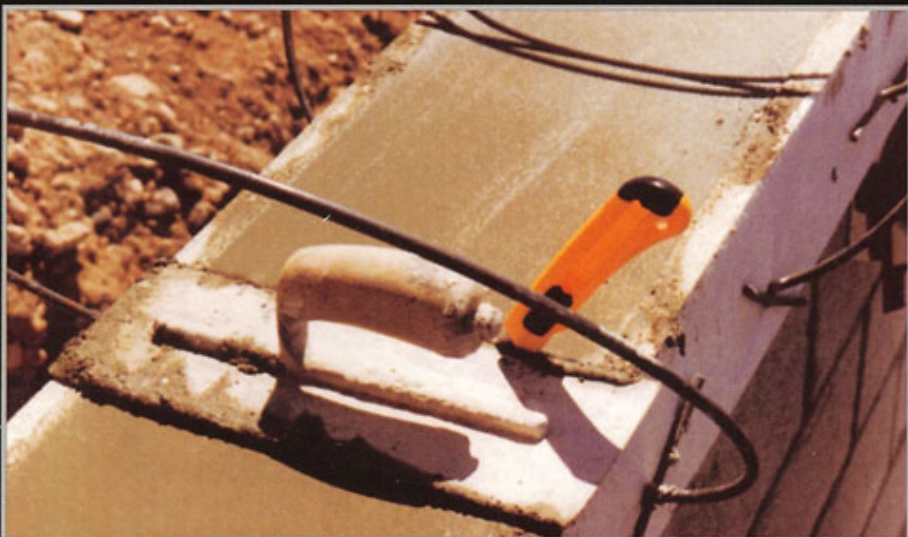




The forms are set in place and clamped by two form setters. The setters are on opposite sides of the wall. Inside and outside forms are placed against the wall, resting the form's shoulder on top of the wall's edge. This establishes the elevation.



The Spring clamp is stretched by both men and placed on the forms with cross bar resting 3/4" below the top of the block. Springs are set 12" apart and the loop of the spring may be laid down on top of the forms when concrete is being poured. Loops can be rolled in opposite directions to leave ample room to work. The same may be applied when troweling.

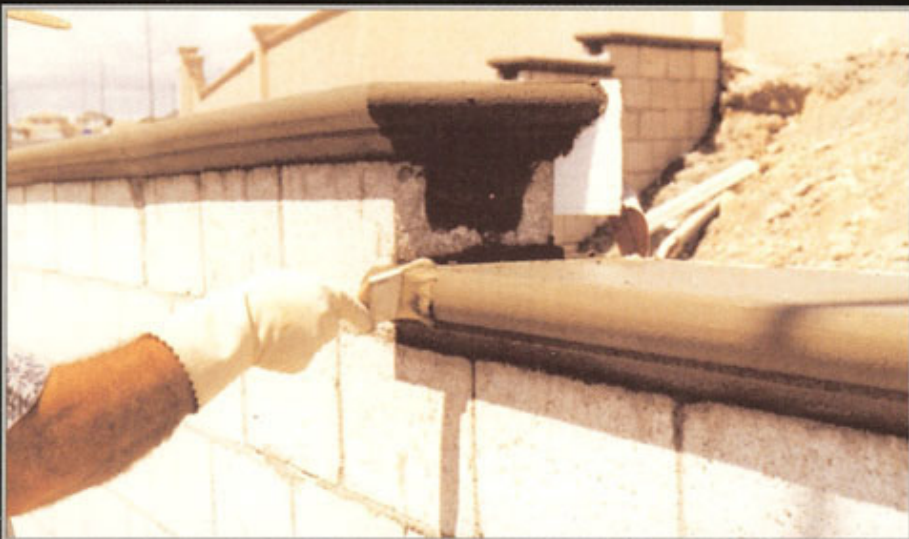


The cross bar is in a slight radius so the the loop may be rolled without tearing the form. When the forms are removed, they show no more damage than the small holes left by the penetrating tips. If the forms are removed on the same day concrete is poured, they may be used three or more times.

When troweling on the first pass, using a butcher knife, cut through the concrete at your discretion, to establish cold joints.



The concrete used to pour the cap, if a large job, may be a 3000 # pea rock pump mix. Most small footage jobs are poured with a sand cement mix. In either case an air entraining admixture must be used to prevent shrinkage cracks. A 5% to 6% is recommended. Concrete, to be used for wall cap, must have a 5" slump. Forms must be vigorously tapped to eliminate honey combs



If forms are stripped in time, a paint brush finish will be sufficient. If a smooth finish is required, use a plastic mule or "Foam Profile Tool" to trowel the radius.

Arlington, Texas
(800) 382-5430
Fax (800) 356-3602

Tucker, Georgia
(800) 382-5430
FAX (800) 356-3602

Orlando, Florida
(800) 382-5430
Fax (800) 356-3602

Henderson, Nevada
(888) 522-4351
FAX (888) 224-7482

Elkridge, Maryland
(800) 382-5430
Fax (800) 356-3602

Sacramento, California
(888) 522-4351
FAX (888) 224-7482



CHAMFER CLIPS

for a
"PRE-CAST" FINISH

NOW YOU CAN MAKE YOUR WALL CAP PROJECTS LOOK LIKE
"PRE-CAST" STONES. THESE RE-USABLE EDGING MOLDS
ALLOW YOU TO HAVE A DEEP JOINTER MARK OVER ALL THE
WALL CAP EDGES.

Never again wonder what to do when you get to the edge.
Use Chamfer Clips by Stegmeier Corp.



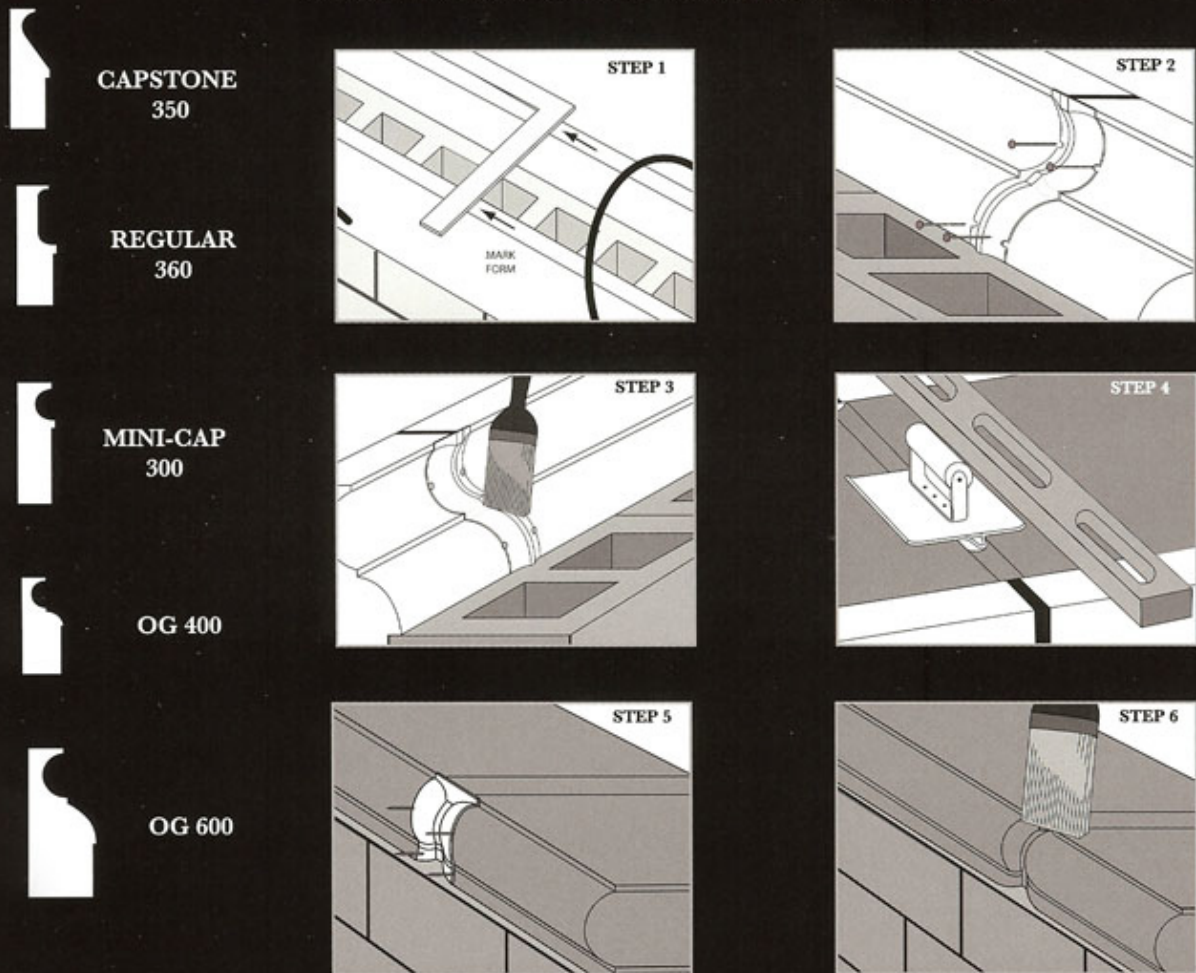
**CLARK CONCRETE
FORMS**

682-224-2812

To Order Please Visit:
clarkconcreteforms.com



CHAMFER CLIP INSTRUCTIONS



- Step 1.** Using a framing square, mark the location of the joints to be tooled.
- Step 2.** Place the Chamfer Clip into the form and pin in place with the nails provided.
- Step 3.** Apply a coat of "Frontier Release Agent" to Chamfer Clip and allow to dry.*
- Step 4.** Tool the joints at the appropriate time using the lay-out marks as a guide.
- Step 5.** Strip the Wall Cap form, exposing the Chamfer-Clip. Carefully remove the Chamfer Clip and wipe clean immediately for re-use.
- Step 6.** Joints may be finished with a damp brush if desired.

*If Wall Cap forms are to be stripped at a later date, a coating of Frontier Release Agent is required on forms as well.