

Connections

A Newsletter For Teachers Working With Autism
Educational Equity For All



May 2017

You've Got a Friend: 7 Tips for Helping Complex Learners Make and Keep Friends

Friday, November 06, 2015
Anna Johnson, *The Wolf School*

Here are some ideas:

- 1) Find a good social match.
- 2) Structure play dates & hanging out.
- 3) Find common areas of interest.
- 4) Level the playing field.
- 5) Review the ground rules.
- 6) Anticipate hiccups
- 7) Practice.

www.golocalprov.com/lifestyle/youve-got-a-friend-7-tips-for-helping-complex-learners-make-and-keep-friend



Autism Teaching Strategies

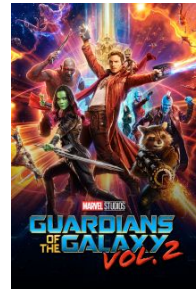
Free Guide This is your quick-reference guide for essential, easy-to-implement strategies for teaching children with autism. It is important to acknowledge that each autistic child has different requirements, and deserves individualized attention. <https://goo.gl/38Ag3K>

Autism Visual Supports, Picture Cards and Story Boards 1.0

A complete collection of Autism Visual Supports essential for any child. <https://goo.gl/o9Ai5O>



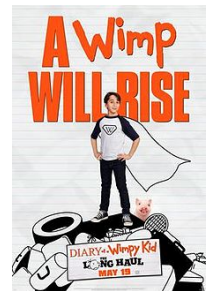
Don't miss the next Sensory Friendly Film!



GUARDIANS OF THE GALAXY VOL. 2
5/9, & 5/13



ALIEN COVENANT
5/23



DIARY OF A WIMPY KID: THE LONG HAUL
5/27

Movie Showings for Guests & Families Living with Autism or Other Special Needs

AMC is proud to partner with the Autism Society to bring you unique movie showings where you can feel free to be you! We turn the lights up, and turn the sound down, so you can get up, dance, walk, shout or sing!

We are now expanding our Sensory Friendly Film program to four showings per month.

- The second and fourth Tuesday and Saturday.
- Family-friendly movies will continue to show Saturdays, starting at 10am local time
- We've added Tuesday showings at 7pm local time that may appeal to others on the autism spectrum.

Tickets are \$4-6 depending on location and can be purchased on the day of the event. To find a participating theater: <https://www.amctheatres.com/programs/sensory-friendly-films>

EDUCATIONAL EQUITY FOR ALL
..... Giving kids what they need to succeed.

Tana Donaghy, President, Educational Equity For All
Missstanad@educationaequityforall.org; 909-964-5057
<http://www.educationalequity4all.com/>

FEATURED IDEA OF THE MONTH



HOW TO
MAKE
HOMEMADE
STRETCHY
RESISTANCE
BANDS FOR
KIDS

<https://goo.gl/jTA8a6>



Do's" and "Don'ts" for Teaching Children with Autism

Don't try to teach before you have an EO (establishing operation). Do begin teaching when you have something (or are something!) the child wants. If you can't "capture" an EO,

1. Don't try to teach before you have an EO (establishing operation). Do begin teaching when you have something (or are something!) the child wants. If you can't "capture" an EO, "contrive" one.
2. Do learn the child. Make sure you understand what he likes and doesn't like. Know how the child typically responds to the environment.
3. Do avoid "confrontation" whenever possible. "Behavioral" doesn't equate to "mean" or "bossy". If you know certain situations are difficult for the child, prepare in advance using a "promise" or by gradually desensitizing the child to the situation.
4. Do attempt to teach the child to tolerate different situations by pairing and desensitizing. "The longer you walk on eggshells, the harder it will be to get off."
5. Do continue to "create" potential new conditioned reinforcers through pairing.
6. Do make sure that people and talking remain paired with reinforcement.
7. Don't inadvertently teach a child to communicate with negative behavior. Negative behaviors must not be reinforced.
8. Do ask for help if any behaviors appear to be escalating so a functional analysis can be performed and the proper action taken.

See many more tips at: <http://www.letstalksls.com/resource-library/autism/dos-and-donts-teaching-children-autism>

WEBSITES AND RESOURCES

<https://goo.gl/SGdOFs>

<https://goo.gl/OOZgKp>

https://www.youtube.com/watch?v=FoLt_J4mxME



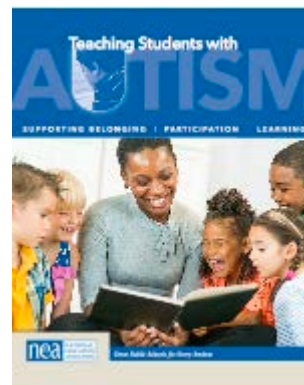
PROFESSIONAL DEVELOPMENT
UNIVERSITY OF MISSOURI
Extension Free Training
Live. And Learn. Modules
Autism Spectrum Disorder: Evidence Based
Practices and Interventions

This self-directed module, updated in the Spring of 2015 was developed by the Central Missouri Rapid Response initiative through the MU Thompson Center. This module provides an overview of evidence-based practices and interventions for individuals with Autism Spectrum Disorders.

This module provides an overview of the importance of evidence-based practices and how to use available resources to identify effective interventions. Participants will gain an understanding of how to use the current research to develop comprehensive intervention plans to support children with autism across the spectrum.

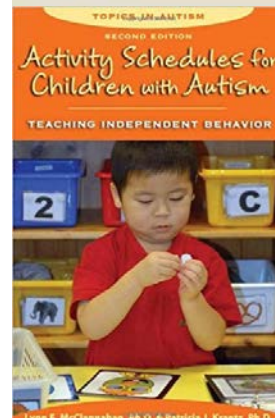
<https://extweb.missouri.edu/courses/default.aspx?courseid=220>

RECOMMENDED READING & VIDEO



Teaching Students with Autism provides a brief summary of how K-12 educators might think differently about students with autism, capitalize on their strengths, provide supports to address their challenges, and facilitate positive social relationships among students with and without autism.

<http://www.nea.org/home/18459.htm>



Activity Schedules for Children With Autism, Second Edition: Teaching Independent Behavior

by Lynn E. McClannahan, Ph.D., Patricia Krantz