



FLORIDA
DEPARTMENT *of*
ECONOMIC
OPPORTUNITY

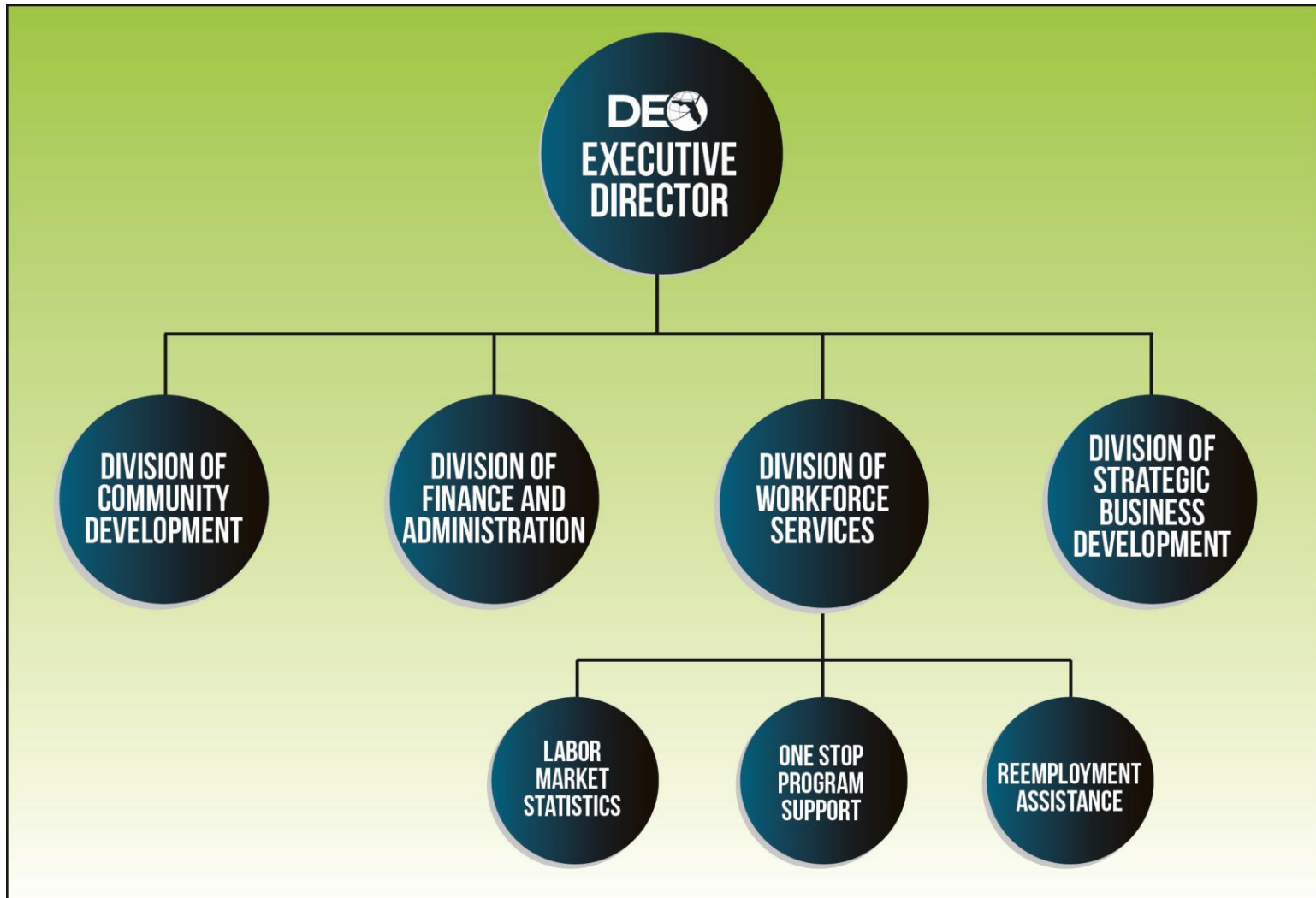
Florida's Approach to Creating Employment Opportunities



Florida's Approach

- Governor's mission to create an "Opportunity Economy"
- Create agency framework for success
- Drive results through policy and performance measurement
- Provide workforce system better tools
 - Economic Security Report
 - Occupational Supply & Demand modeling





2011 Policy Changes to Reemployment Assistance (RA) Program

- Ensures claimants partner with state to find work.
- Claimants must make job contacts with 5* prospective employers each week or access reemployment services at local One-Stop CareerSource Center.
- Maximum number of weeks of benefits fluctuates with changes in the economy (currently 16 weeks).
- Before continued payments can be issued claimants must complete a skills assessment to aid in their work search.

*Claimants living in regions with fewer opportunities are required to make 3 job contacts each week



Governor's Job Placement Report

- Governor directed the creation of a daily, weekly and monthly job placement report in 2011.
- He personally reviews this data and holds the workforce system accountable for performance.
- Ranks regions based on performance relative to their share of Wagner Peyser funding and the number of individuals that have gone to work.
- Each month ~40,000 Floridians are placed.



Plan to Double Employer Involvement

- 2 million dollar incentive program for workforce system
- Regions are measured on engaging more employers to participate in efforts to hire local individuals looking for work.
- Efforts include job fairs, recruitment workshops, trainings, referrals, etc.
- Regions must double general employer participation and Level 1 Services delivered by June 30, 2014 to receive financial rewards.



Economic Security Report

- Provides students, parents, and others with information on public institution graduate employment, earnings, and other outcomes.
- Includes data at school and program levels.
- Allows informed career decision making and informed policy guidance.
- Consists of a summary report and interactive website.



Degree Types – What you Study Matters

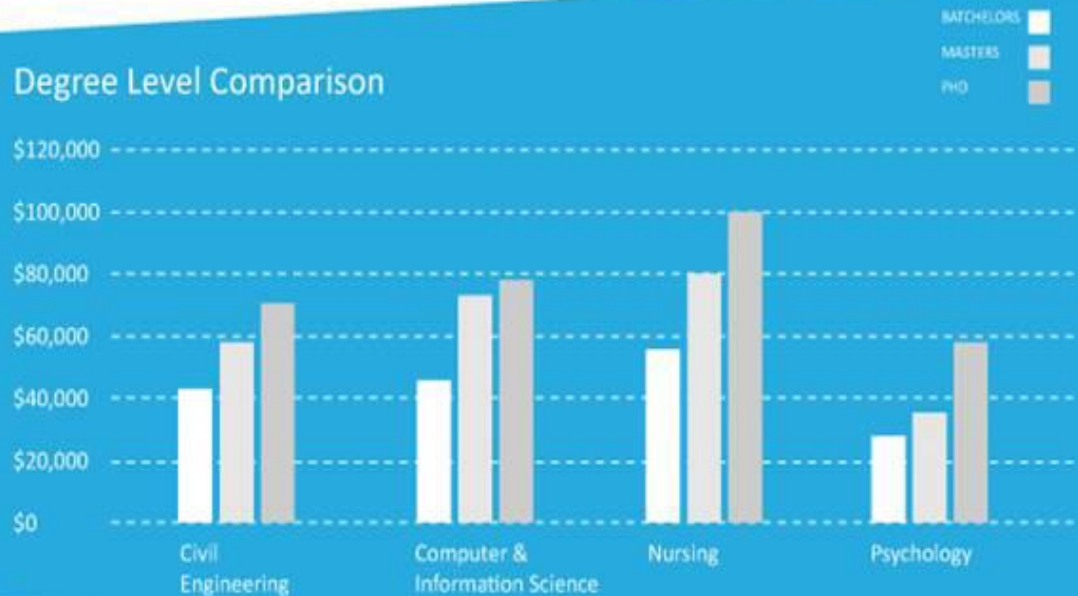


Nursing – Bachelors: \$53,812
Psychology – Bachelors: \$28,852

In most cases, *what* you study matters more than *where* you study. Once you know what you're studying, the *degree* level usually matters more than *where* you study.

On average, the type of degree selected will be associated with earnings potential.

Degree Level Comparison



Source: Florida Education and Training Placement Information Program (FETPIP)
2010-11 Graduates – First Year After Graduation

FL Occupational Supply & Demand System

- Analysis of available and future labor supply by regional area to support educational planning, workforce efforts, and business recruitment.
- Real time information on jobs in demand (surplus/need) now and in the future.
- Jobseekers can use the information for re-employment purposes.



FLORIDA

the TURNAROUND STORY



Then


RATE INCREASED TO **11.4%**



830,000 LOST JOBS



REEMPLOYMENT ASSISTANCE CLAIMANTS REACH **700,000**



FLORIDA BORROWS **\$3.5 BILLION** FROM FEDERAL GOVERNMENT

ONLINE JOB ADS **FELL TO 159,000**




UNEMPLOYMENT

PRIVATE SECTOR JOB GROWTH

REEMPLOYMENT ASSISTANCE

JOB SUPPLY and DEMAND

Now

RATE AS OF 2/2014 **6.2%**



540,700+ JOBS ADDED



SINCE **12/2010**

120,000 REEMPLOYMENT ASSISTANT CLAIMANTS



05/2013 DEO REPAID THE GOVERNMENT LOAN IN FULL

260,000+ JOB OPENINGS STATEWIDE AS OF 3/2014




FLORIDA DEPARTMENT of ECONOMIC OPPORTUNITY

Department of Economic Opportunity

Chad Poppell, Chief of Staff

Florida Department of Economic Opportunity

Email: Chad.Poppell@deo.myflorida.com



FLORIDA DEPARTMENT *of* ECONOMIC OPPORTUNITY

