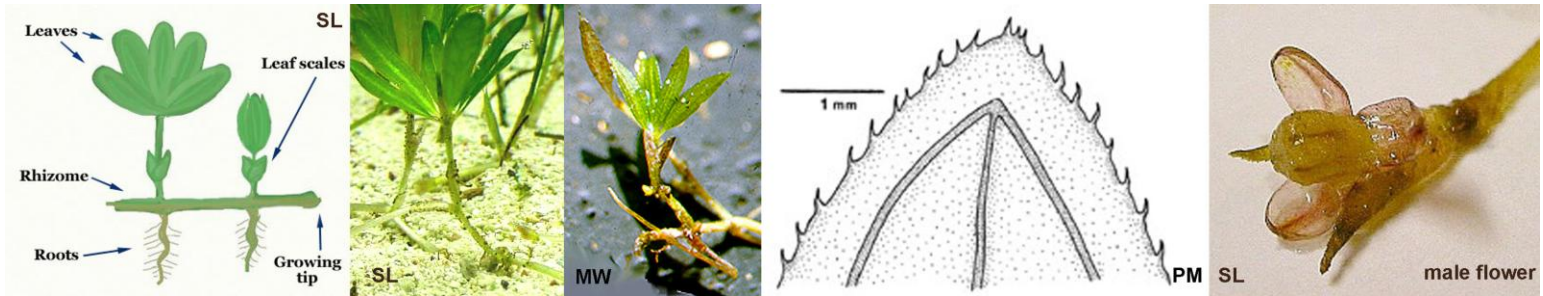
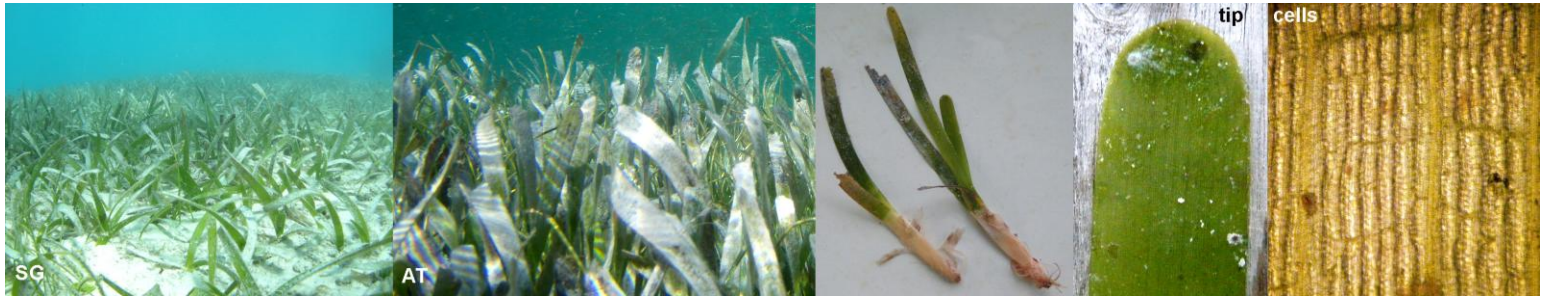


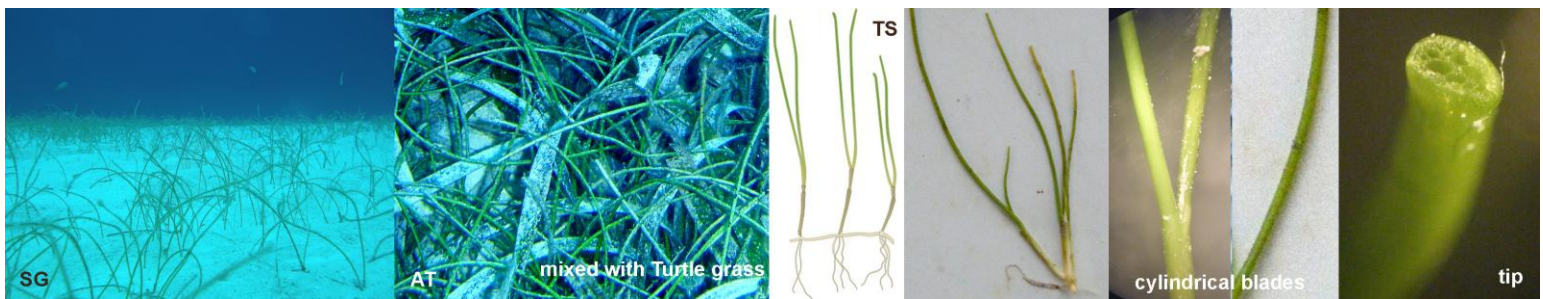
PICTURE GUIDE TO SEAGRASSES OF GLOVER'S REEF ATOLL



ENGELMANN'S SEAGRASS *Halophila Americanae engelmannii*



TURTLE GRASS *Thalassia testudinum*



MANATEE GRASS *Cymodocea filiformis* (Syn. *Syringodium filiformis*)



SHOALWEED *Halodule wrightii*

For detailed species descriptions and information on habitat, life history, economic significance and distribution go to "THE PLANTS OF CAYE CAULKER" by *J. Reitsma* and *D. Beveridge*, Belize Tourism Industry Association.

Glover's Reef images by *Tom Bright*, *Steve Gittings* (SG) and *Alex Tilley* (AT).

[Integration and Application Network](http://ian.umces.edu/imagelibrary/) Image Library (ian.umces.edu/imagelibrary/) images by *Tracey Saxby* (TS) used under Creative Commons Attribution ShareAlike 3.0 license <http://creativecommons.org/licenses/by-sa/3.0/>.

Halophila images from *Sarah Lardizabal* (SL),

the Smithsonian Institution Press paper "Seagrasses" by *Phillips, R.C.* and *E.G. Menez* (PM) and *Dr. Mary Wicksten* (MW), Texas A&M University Department of Biology.

This guide may be copied intact for educational purposes in compliance with the above license but separate use of individual images is subject to copyrights and use restrictions of the above image owners.

Created for WCS by biologist and former Glover's Reef Research Station Manager *Tom Bright*



WILDLIFE CONSERVATION SOCIETY
Glover's Reef Research Station, Belize