

Cut out each card and show the child how to sort the cards under the correct categories of "Past" or "Present".

Use the Control Chart to check the sorting. To make 3-part cards, print two sets of cards; keep the labels on one set, cut the labels off the second set.



motorwagen



flier



ship



car



airplane



cruiseline



manual register



steam engine train



record player



electronic register



bullet train



cd player



ink and quill

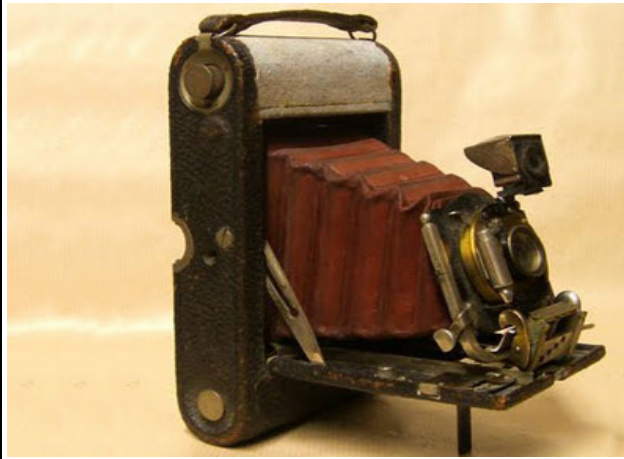


plate camera



washboard



ball point pen



digital camera



washing machine



rotary telephone



penny-farthing



manual typewriter



mobile phone



bicycle



laptop

<u>Past</u>	<u>Present</u>
--------------------	-----------------------

The "motor-wagen" (not a typo - it's spelled 'wagen') built in 1886, is widely regarded as the first automobile; that is, a vehicle designed to be propelled by a motor. The vehicle was awarded the German patent, number 37435, for which Karl Benz applied on January 29, 1886. Following official procedures, the date of the application became the patent date for the invention once the patent was granted, which occurred in November of that year. http://en.wikipedia.org/wiki/Benz_Patent-Motorwagen

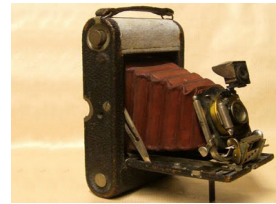
Past



Present



Past



Present

