



Electronic Monitoring Equipment

ONE TAG for curfew, location & exclusion monitoring

The Buddi Smart Tag is a one piece permanently worn device that can perform all Electronic Monitoring functions from fully active GPS tracking to curfew monitoring. The Tag achieves its flexibility through the use of GPS, GSM and RF technologies in a single device. It is small, lightweight, easy to fit, secure and robust. The state of the art technology minimizes nuisance alerts, saving our customers considerable operational time.



SMART TAG

- GPS location & RF curfew monitoring in a single solution
- 2 to 4 days battery life (GPS)
- Weighs only 2.4 ounces
- Back up LBS locations
- Accurate locations utilizing latest GPS chip set
- Assisted GPS
- Easy 'click to fit' straps
- Utilizes AT&T and T-Mobile Networks

HOME MONITORING BEACON

- Low cost
- Plug in to operate
- Enhances indoor locations
- Improves Smart Tag battery life
- Tamper/motion/power disconnect



VICTIM UNIT

- Moving GPS exclusion zones provide proximity alerts for one or more aggressors
- Alerts sent to mobile phone(s)
- Panic Alarm
- 24 hour battery life
- Utilizes same user interface



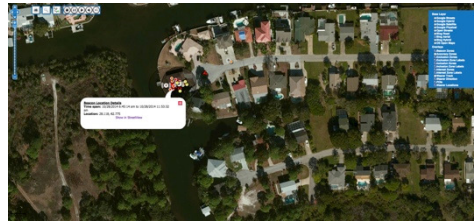
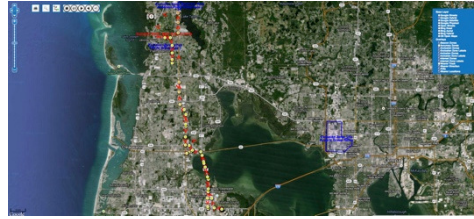
risk reduced | innovation | value delivered

BUDDI EAGLE MONITORING PLATFORM

- Web based application
- Unlimited access
- Mobile & tablet compatible
- Intuitive operation

KEY FEATURES:

- Web based, requiring no additional IT
- Multiple mapping provider options
- Location data displayed on maps and tables
- Instant location address 'look up'
- Easy zone mapping
- Multiple alert functionality, including direct alerts
- Automated crime & incident comparison,
- Enhanced reporting and analytical functions



Google® and Bing® Street Maps,
Satellite, Hybrid and Street View

BENEFITS OF BUDDI

- All EM functions in a single device
- Multiple tracking technologies
- Used worldwide in GPS tracking and curfew monitoring applications
- Extended battery life enables compliance even from chaotic offenders
- Ease of use with click to fit installation and activation in less than 5 minutes
- Small size of Tag reduces hindrance and susceptibility to damage
- Secure strap deters removal of the Tag
- Ease of charging – increases compliance
- High level of GPS performance

Accessories

STRAP



- Fiber Optic detection
- Fixed length
- Reinforced/Cut resistant
- Re-usable

On Body Charger



Wireless On Body
Charger™

Docking Station



Pre-deployment Charging



For more information about Buddi and our electronic monitoring products,
please contact: 1-888-545-6651 or email monitoring@slsgps.com

Specialized Location Services
P.O. Box 2401
Columbus, Ga 31902-2401