

www.torqb.com

Screwdriver with torque & angle of rotation sensor
Programmable screwdriver with shut-off clutch

TORQ^B



- Pistol-, straight-, and angle screwdrivers
- From battery screwdriver with shut-off clutch up to a Wi-fi battery DC tool
- Multistage programming via USB interface
- OK / NOK evaluation
- Process and quality control
- Handle vibration alarm
- Brushless high-powered motor
- Integrated screw counter
- Comparison of the data recorded with defined limits
- OLED display with symbol and cleartext display
- Optional with scanner & Wi-fi

Your Authorized Distributor:

Cordless screwdriver technology

TotqB® - series



Overview



TotqB® Light

type designation: TB-x-L-xx

Programmable Clutch Tool

High precision clutch

Programmable via USB with HST-Tool-Manager

Programmable parameter:

- Current (Torque)
- Angle
- rpm
- Time

Multi step programming (6 Steps)

Handle vibration alarm

Multi color status-LED visible from all angles

Intelligent Battery Management

Display of tightening result



TotqB®

type designation: TB-x-SO-xx

Programmable Clutch Tool

High precision clutch
+
Optional:
Barcode scanner & Wi-fi

Programmable via USB with HST-Tool-Manager

Programmable parameter:

- Current (Torque)
- Angle
- rpm
- Time

Multi step programming (6 Steps)

Handle vibration alarm

Multi color status-LED visible from all angles

Intelligent Battery Management

Display of tightening result

OLED-Display

Screw counter

Memory-Function

Cordless screwdriver technology



TotqB® - series

Overview

TotqB® PRO type designation: TB-x-SOP-xx	TotqB® PRO-M type designation: TB-x-EC-xx	TotqB® EC² type designation: TB-x-EC2-xx
<p>Programmable Clutch Tool</p> <p>High precision clutch and torque reaction sensor + Optional: Barcode & Wi-Fi</p>	<p>Programmable Battery-DC-Tool</p> <p>Torque- & Angle transducer + Optional: Barcode & Wi-Fi</p>	<p>Programmable Battery-DC-Tool</p> <p>Torque- & Angle transducer + Second torque sensor as a redundancy system + Optional: Barcode & Wi-Fi</p>
<p>Programmable via USB with HST-Tool-Manager</p>	<p>Programmable via USB with HST-Tool-Manager</p>	<p>Programmable via USB with HST-Tool-Manager</p>
<p>Programmable parameter:</p> <ul style="list-style-type: none"> • Torque • Angle • rpm • Time 	<p>Programmable parameter:</p> <ul style="list-style-type: none"> • Torque • Angle • rpm • Time 	<p>Programmable parameter:</p> <ul style="list-style-type: none"> • Torque • Angle • rpm • Time
<p>Multi step programming (6 Steps)</p>	<p>Multi step programming (6 Steps)</p>	<p>Multi step programming (6 Steps)</p>
<p>Handle vibration alarm</p>	<p>Handle vibration alarm</p>	<p>Handle vibration alarm</p>
<p>Multi color status-LED visible from all angles</p>	<p>Multi color status-LED visible from all angles</p>	<p>Multi color status-LED visible from all angles</p>
<p>Intelligent Battery Management</p>	<p>Intelligent Battery Management</p>	<p>Intelligent Battery Management</p>
<p>Display of tightening result</p>	<p>Display of tightening result</p>	<p>Display of tightening result</p>
<p>OLED-Display</p>	<p>OLED-Display</p>	<p>OLED-Display</p>
<p>Screw counter</p>	<p>Screw counter</p>	<p>Screw counter</p>
<p>Memory-Function</p>	<p>Memory-Function</p>	<p>Memory-Function</p>
<p>100 individual Programs</p>	<p>100 individual Programs</p>	<p>100 individual Programs</p>
<p>Min. 150,000 results incl. tightening curve stored in the tool</p>	<p>Min. 150,000 results incl. tightening curve stored in the tool</p>	<p>Min. 150,000 results incl. tightening curve stored in the tool</p>
<p>Highest transducer accuracy in the market, torque sensor: 1% full scale angle encoder: 0.1°</p>	<p>Highest transducer accuracy in the market, torque sensor: 1% full scale angle encoder: 0.1°</p>	<p>Highest transducer accuracy in the market, torque sensor: 1% full scale angle encoder: 0.1°</p>

Cordless screwdriver technology

TorqB® - series



Features

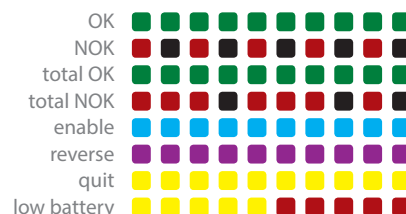


Multi color LED control light individual programming possible

The TorqB® series has a LED control function which is near the display and goes around the tool.

The light can be programmed as glowing, flashing or pulsating with different time periods for each LED signal and different colors.

It informs the worker at all time about the tools status as e.g. screwdriver is released, tool is on reverse mode; counter-clockwise rotation, tightening was successful (OK), error at tightening (NOK), tool needs acknowledgement of the result or action of the worker.



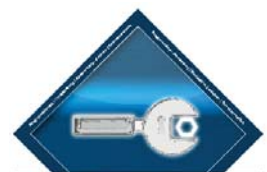
completely free programmable LED result signals



Intelligent battery management

The intelligent battery management guarantees that a fastening is only triggered if the battery has sufficient capacity to perform the task.

The battery management guarantees a high cycle life span and offers effective protection against deep discharge of the Li-Ion battery.



Software Tool-Manager

The-Tool-Manager allows quick and easy adjustments of TorqB® Power Tools.

The settings are saved in the tool, but they can also be saved locally on a PC as backup.



More Information you'll find on our webpage.



Handle vibration alarm

The NOK handle vibration alarm is a new feature of the TorqB® series.

Through the vibration following a NOK tightening the operator recognises additionally to the signal tone and the display on the OLED screen and the multi color LED, that the tightening was not OK.



Cordless screwdriver technology



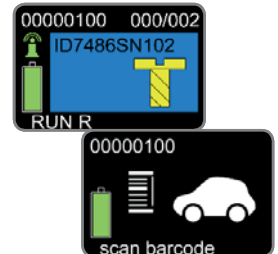
TorqB® - series

Features



OLED Display¹

The screwdriver has an OLED display for status display. This makes life easier for the worker and informs him at all times about the status of the process and the screwdriver (work order / tightening results / battery status).



Job / sequence¹

Each tool can save different jobs / sequences. A job connects up to 8 programs to a sequence and starts them as defined. So the tool can process a workpiece with e.g. 3 short and 5 longer screws without changing the program.

Jobs can be activated by different options as e.g. barcode, controller or as standard job (handmode).



Optional barcode scanner integrated in the tool¹

Using the optional barcode scanner, components and / or assemblies can be assigned to the tightening result data. Furthermore, by using the barcode scanner, a program saved in the screwdriver can be activated and processed. The program called up contains the number of screws and the process parameters, rpm, torque and angle for the fastening. 99 barcodes storable - 2D barcodes can be read



Optional combined Wi-fi module for data communication¹

With the combined radio module the radio frequency can be selected with the software (2.4 or 5 GHz). Also the channel and the traffic power can be set customized.

We suggest the 5 GHz setting because the transmission power is twice as big and more radio channels can be chosen.

Alternativ a communication with 868 MHz radio can be offered. For more information, please contact us.

With 868 MHz radio the transmission of curves is not possible with PRO and PRO-M versions. Only the results and status will be transmitted.

Cordless screwdriver technology

TorqB® - series



Features



Torque and angle of rotation sensor^{1,2,3}

The rotating torque transducer of the TorqB® PRO-M has the same precision as externally rotating torque sensors. The total sensor deviation is less than 1% full scale. The angle resolution is precisely 0,1°.

VDI/VDE 2647 able +/- 7% | Cmk > 1,67 | Cm > 2,0



03 / 05

Memory function¹

If the tool runs a counting or tightening job and the battery needs to be exchanged, the TorqB® Tool will remember the counting status before exchanging the battery. So no screws will be forgotten in the process.

Example: Total job 5 screws, after 2 screws the battery needs to be exchanged, if the new battery is plugged in the tool will ask for 3 remaining tightenings.

Overview of the features

Features	TorqB® Light	TorqB®	TorqB® PRO	TorqB® PRO-M	TorqB® EC ²
Multi color LED control light					
Intelligent battery management					
Software-Tool-Manager					
Handle vibration alarm					
OLED display					
Screw counting					
Job / sequence					
Optional barcode scanner					
Optional Wi-fi					
Torque and angle of rotation sensor					
Torque reaction sensor as redundance					
More information	page 14	page 18	page 22	page 26	page 30

Cordless screwdriver technology



TorqB® - series

Display



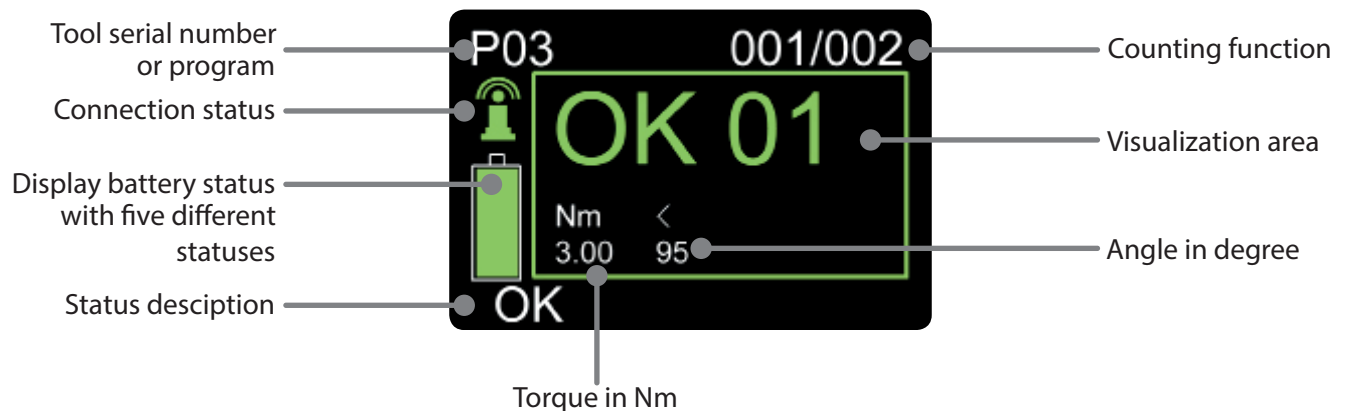
Display indications

- Screw counter
- OK / NOK smiley
- Battery status
- Serial number
- Error message
- NOK reason
- Confirmation query
- CW / CCW
- Service status
- Problem solution
- Program
- Enables
- Scanned barcode
- Wi-fi status



The display of the TorqB® was developed so that the worker is led intuitively through the process steps and can read off the quality of the screw joint at any time.

The display indications include, e.g., the OK / NOK evaluation, the battery status, count function, torque, angle of rotating and much more.

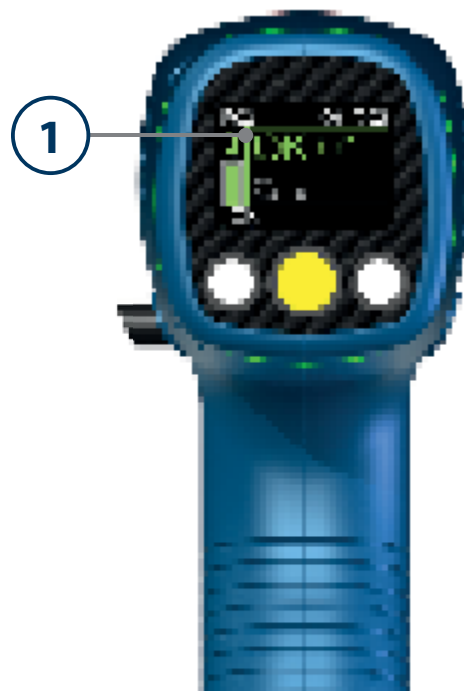


Cordless screwdriver technology

Totiq B[®] - series



Pistol screwdriver



- 7 **Large trigger**
ergonomical form
- 8 **Ergonomical handle**
for a better handling of the tool
incl. vibration alarm
- 9 **USB interface**
Adjustment of setting with
HST-Tool-Manager
- 10 **Powerful LED**
optimal lightning also in bad
lightning conditions
- 11 **Optional Wi-fi module**
Radio 868 MHz or
Wi-fi 2,4 & 5 GHz
*not available in
Light version*
- 12 **Optional scanner**
*not available in
Light version*
- 13 **Premium Li-Ion battery**
optimized for industrial
applications
- 14 **1/4" hexagon socket
adapter**

- 1 **OLED-Display to led the
worker through the process**
*not available in
Light version*
- 2 **Multi color LED control light**
for a better Information of the
worker. LED is visible of each

- 3 **Brushless high-powered motor**
for higher no load speed and a
faster, powerful working,
maintenance free
- 4 **Color index**
easy assignment of the torque,
tool or application area
- 5 **Clutch access**
Easy and fast adjustment of
the clutch
*not available in
PRO-M and EC² version*
- 6 **CW / CCW**
perfect to operate thanks to

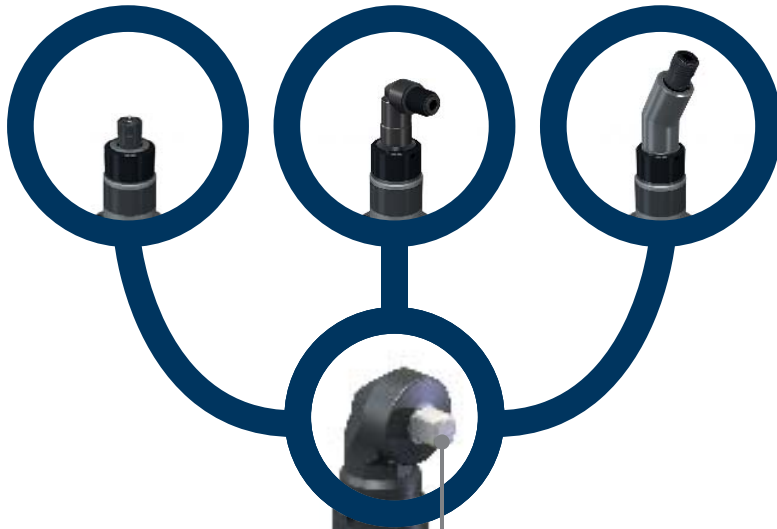
Cordless screwdriver technology



Totiq B® - series

Angle screwdriver

different angle heads and adaptations available

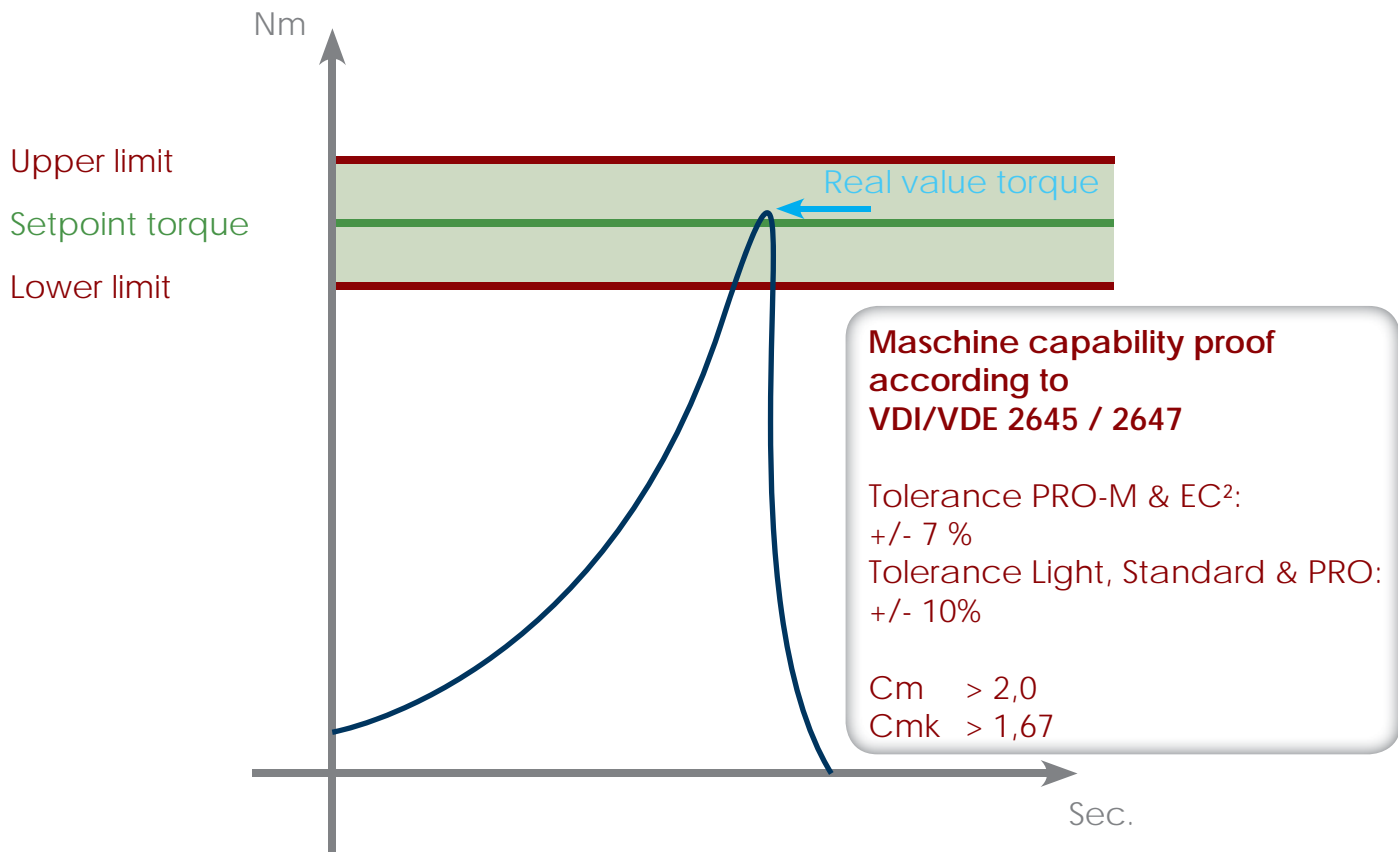


Cordless screwdriver technology

TorqB® - series



Precision is our strength



The homologation you'll find at www.hs-technik.com

Premium Power Tools!

This claim is more than fulfilled by the easy-to-use, high-performance cordless screwdriver with torque transducer and angle encoder^{1,2,3}.

With a USB interface integrated into the foot of the tool, the TorqB® pistol screwdriver (0.8 - 14 Nm) and angle screwdriver (1.5 - 85 Nm) can be programmed freely in 99 programs.

programming software guarantees quick and easy programming of the tools for the required situation.

The screwing procedure, torque and angle control are selected in the HST-Tool-Manager.

better than 1% full-scale, guarantees exact and repeatable screw connections for the process and thus the premium quality of the products produced^{1,2,3}.

The TorqSpeed (TS) screwing function, which has been registered for a patent, optimizes the process time; no other tool is more efficient.

The user-friendly HST-Tool-Manager The very high sensor precision,

Cordless screwdriver technology



TorqB® - series

With or without controller

The autonomous version of the TorqB® also works without HST-Connect. Connected to a barcode scanner, it is also possible to activate several programs from the tool without reprogramming via USB¹. After scanning a barcode, the tool compares the data available in its own database with the scanned data.

If this barcode is assigned to a program in the tool database, the tool activates the corresponding program and processes the programmed specifications. Also jobs can be programmed¹. Of course the process data generated this way is saved on a SD card on the tool.

 >150,000 tightening curves

The brushless high-performance motor is maintenance-free and maximizes the battery life. The high-performance Li-Ion batteries allows more fastening procedures per battery charge than customary Ni-Cd or Ni-MH batteries. At the same time, the new Premium Li-Ion battery packs are much lighter than customary batteries.

Quality assurance

Thanks to a multi-stage tightening, required preload force and the desired clamping force in the connection are always achieved.

In most cases, the multi-stage process allows compensation or elimination of subsidence.

The screwdriver can be programmed with reference values¹ for the process. If the specified torque or current^{1,2} / angle / rpm / time reference value is not adhered to, the fastening procedure is evaluated as NOK, and this is indicated visually on the display

(red and audible signal = NOK,
green = OK)
(direct information to the operator).

At the Light version the status will be shown via a multi color LED control light.

An integrated screw counter¹ guarantees that all screws are fastened.

The advantages of this fastening procedure is that the screwing time is reduced by up to 50% as compared to a standard two-stage tightening.

The screwing parameters adjust themselves dynamically to the type of joint. The power consumption is lower than that of a two-stage tightening since no stop and restart, braking and starting power is required.

Thanks to the ergonomic and force-optimized fastening procedure, the efficiency is increased significantly. The large, bright OLED display¹ indicates the status of the tool at all times.

Unique on the market, the display indicates the battery status, the process results, as well as plain text and symbol displays for worker guidance and information.

HST-Connect¹, the wireless transmission systems for control of the tools and process documentation guarantee a smooth and seamlessly documented production flow.

Thanks to the Wi-fi 2.4 or 5 GHz or 868 MHz radio module process data can be transmitted really fast.

We suggest the 5 GHz setting because the transmission power is twice as big and more radio channels can be chosen.

Torque-speed-regulation

With the optional barcode scanner, components / component groups can be associated with the screwing results automatically¹.

For example, the serial number of the component is scanned at the beginning of the flow. It is then associated automatically with the product ID and the screwing results and saved in the results file.



More information about the controllers you'll find on our webpage.



More information about the program software you'll find on our webpage.

Cordless screwdriver technology

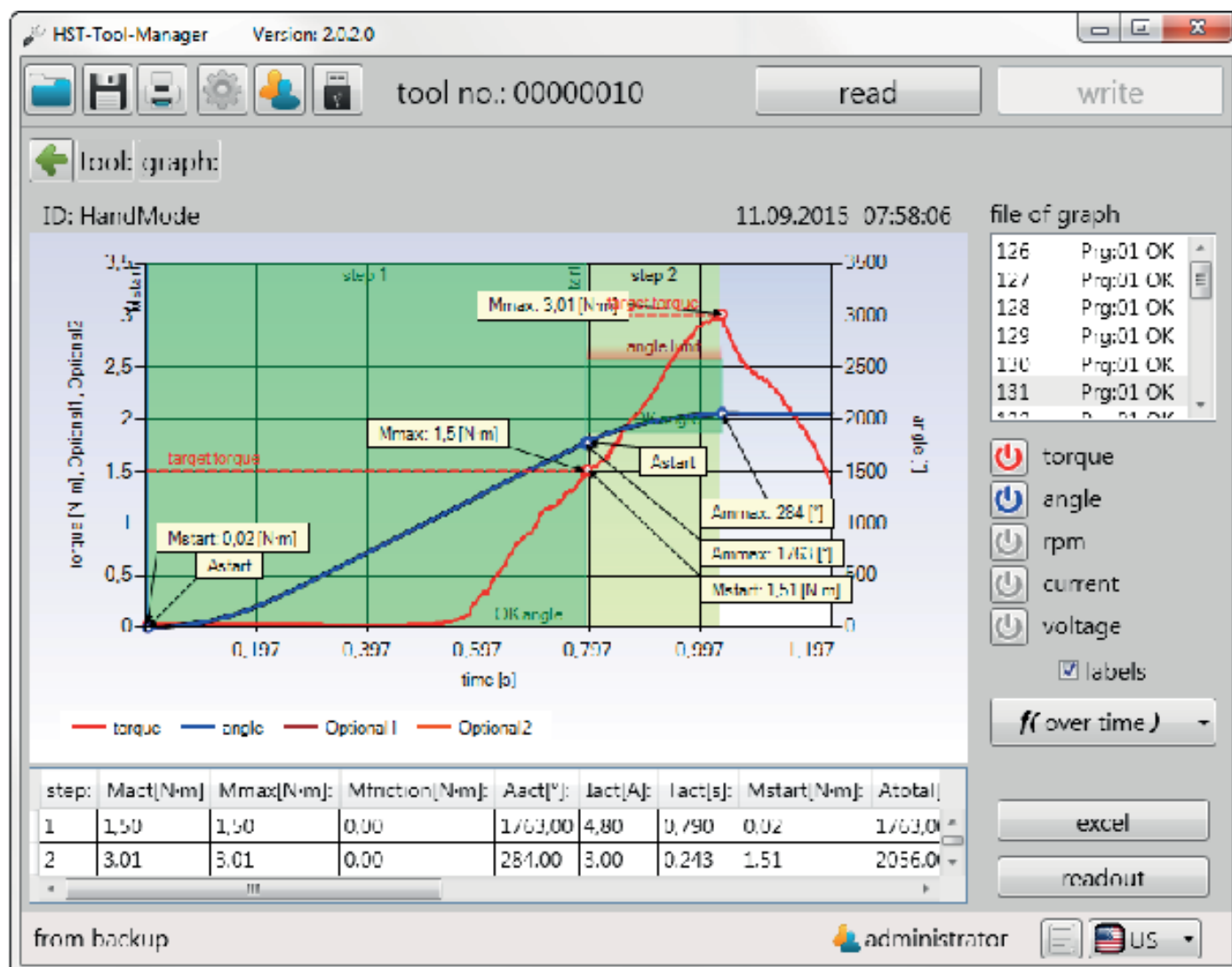
TotqB® - series



Output of values

The-Tool-Manager shows all relevant process data. With a click on the buttons on the right side of the graph, the torque, angle, rpm, current and voltage can be activated or deactivated.

The graph can be shown over time or angle. Below the graph a table shows all evaluated process data.



Prozess data:

- Torque
- Angle
- Rpm
- Current
- Voltage
- Evaluated friction
- Time for the fastening
- Start of the angle counter
- Angle at beginning of a step
- Battery voltage in the step
- Evaluation of the result
- Shut-off reason
- NOK reason
- ...

Cordless screwdriver technology



TorqB® - series

Program software for HS-Technik Power Tools

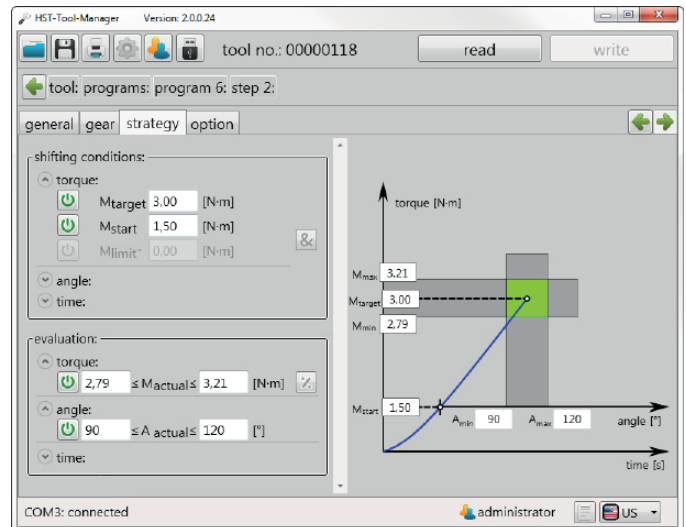
The-Tool-Manager allows quick and easy adjustment of TorqB® Power Tools. In addition to the general settings such as signal tones, LED indicators and monitoring settings, the process relevant parameters such as torque^{1,2} / angle of rotation / speed / time / number of screw levels / number of connections can be set with the -Tool-Manager.

Thereby all popular screwing strategies can be programmed.

The settings are saved in the tool, but they can also be saved locally on a PC as backup.

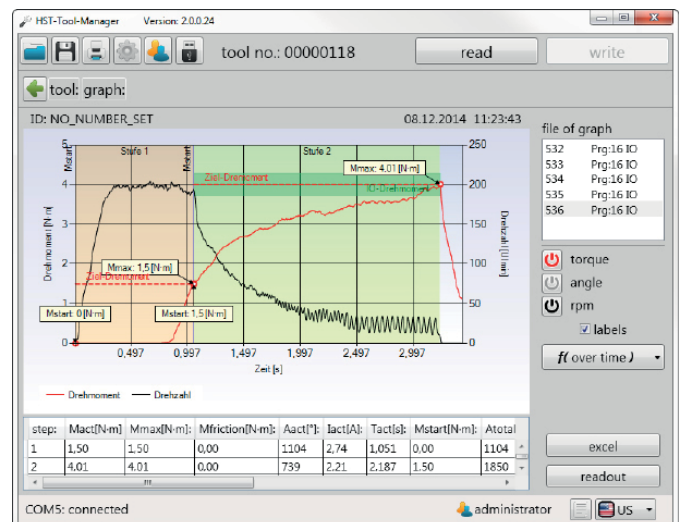
Furthermore, the-Tool-Manager offers a print function with which the settings can be printed and documented as a PDF.

More information about the program software you'll find on our webpage.



The screenshot displays a grid of programmed screwing strategies. Each program includes a name, a status icon (power on/off), and a brief description of its settings.

Program	Description	Steps	Last Change
program 0	unscrew	1	11:34 23.11.2015
program 1	program 1 right	2	11:35 23.11.2015
program 2	tightening standard	1	11:34 23.11.2015
program 3	3Nm torque	2	11:35 23.11.2015
program 4	45° angle	1	11:35 23.11.2015
program 5	4,0Nm torque	3	11:35 23.11.2015
program 6	4,0Nm capability st.	2	11:37 23.11.2015
program 7	5,0Nm 5 steps	5	11:37 23.11.2015
program 8	10Nm torque	2	11:37 23.11.2015



Cordless screwdriver technology

TotqB® Light



Programmable battery screwdriver with shut-off clutch



- Precision shut-off clutch
 - Torque repetition accuracy +/- 10%
Cmk > 1,67 | Cm > 2
 - Programmable in 6 steps
 - Current (Torque)
 - Angle
 - rpm
 - Time
 - Handle vibration alarm
 - Multi color LED indication
 - Intelligent battery management
 - Brushless high-powered motor
 - Display of the fastening results via status LED
- Energy recovery of the braking energy extending the battery lifetime
 - Maximum of ergonomic
 - LED lighting of the working area
 - Updates can be done through the USB

TotqB® Light

The basic version for easy up to normal applications.

Programmable in 6 steps

Cordless screwdriver technology



TorqB® Light

Pistol screwdriver



Pistol screwdriver	Torque	Speed max.	Adapter	Dimensions in mm L x B x H	Weight in kg
TB-P-L-4	1.0 - 4.0 Nm	1.050 rpm	1/4" - Form E	230 x 51 x 206	1.25
TB-P-L-6	1.5 - 6.5 Nm	850 rpm	1/4" - Form E	230 x 51 x 206	1.25
TB-P-L-10	1.5 - 9.0 Nm	570 rpm	1/4" - Form E	230 x 51 x 206	1.25
TB-P-L-12	3.0 - 13.0 Nm	460 rpm	1/4" - Form E	230 x 51 x 206	1.25

18 V batteries without deep discharge protection can be used.
Special types are not considered in this listing.
Data of weight and length are without battery.

Cordless screwdriver technology

TorqB® Light

Angle screwdriver



Angle heads for the TorqB® series you'll find from page 28.



Angle screwdriver	Torque	Speed max.	Adapter	Dimensions in mm L x B x H	Weight in kg
TB-A-L-10	1.5 - 9.0 Nm	540 rpm	1/4" - Form E	411 x 73 x 92	1.35
TB-A-L-12	2.5 - 13.0 Nm	550 rpm	3/8" square	436 x 73 x 92	1.30
TB-A-L-20	5.0 - 20.0 Nm	360 rpm	3/8" square	436 x 73 x 92	1.30
TB-A-L-30	8.0 - 30.0 Nm	300 rpm	3/8" square	483 x 73 x 92	1.50
TB-A-L-50	15.0 - 50.0 Nm	160 rpm	3/8" square	483 x 73 x 92	1.50
TB-A-L-75	25.0 - 75.0 Nm	90 rpm	1/2" square	526 x 73 x 92	1.80

From 60 Nm on a torque reaction arm is recommended.
 18 V batteries without deep discharge protection can be used.
 Special types are not considered in this listing.
 Data of weight and length are without battery.

Cordless screwdriver technology



TorqB® Light

Straight screwdriver



Straight screwdriver	Torque	Speed max.	Adapter	Dimensions in mm L x B x H	Weight in kg
TB-S-L-4	1.0 - 4.0 Nm	1,050 rpm	1/4" - Form E	410 x 73 x 92	1.00
TB-S-L-6	1.75 - 6.5 Nm	850 rpm	1/4" - Form E	410 x 73 x 92	1.00
TB-S-L-10	2.0 - 10.0 Nm	570 rpm	1/4" - Form E	410 x 73 x 92	1.00
TB-S-L-12	2.5 - 12.0 Nm	460 rpm	1/4" - Form E	410 x 73 x 92	1.00

18 V batteries without deep discharge protection can be used.
Special types are not considered in this listing.
Data of weight and length are without battery.

Cordless screwdriver technology

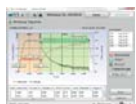
TotqB® Standard



Programmable screwdriver with shut-off clutch with extended functionality



- Precision shut-off clutch
- Torque repetition accuracy +/- 10%
Cmk > 1,67 | Cm > 2
- Programmable in 6 steps
 - Current (Torque)
 - Angle
 - rpm
 - Time
- Handle vibration alarm
- Multi color LED indication
- Intelligent battery management
- Brushless high-powered motor
- Display of tightening results
- Energy recovery of the braking energy extending the battery lifetime
- Maximum of ergonomic
- LED lighting of the working area
- Updates can be done through the USB
- OLED-Display
- Screw counter
- Memory-Function
- 100 individual programs
- Optional Barcode & Wi-Fi



More information about the program software you'll find on our webpage.

TotqB® - Advantages toward the tools in the catalog on the pages before

The basic version for easy up to normal applications.
Complete functionality

Can be accessed via a controller

Optional Wi-fi 2.4 & 5 GHz
or radio 868 MHz
Optional barcode scanner

Cordless screwdriver technology



TorqB® Standard

Pistol screwdriver



Pistol screwdriver	Torque	Speed max.	Adapter	Dimensions in mm L x B x H	Weight in kg
TB-P-SO-4	1.0 - 4.0 Nm	1.050 rpm	1/4" - Form E	230 x 51 x 206	1.25
TB-P-SO-6	1.5 - 6.5 Nm	850 rpm	1/4" - Form E	230 x 51 x 206	1.25
TB-P-SO-10	1.5 - 9.0 Nm	570 rpm	1/4" - Form E	230 x 51 x 206	1.25
TB-P-SO-12	3.0 - 13.0 Nm	460 rpm	1/4" - Form E	230 x 51 x 206	1.25

18 V batteries without deep discharge protection can be used.
Special types are not considered in this listing.
Data of weight and length are without battery.

Cordless screwdriver technology

TorqB® Standard



Angle screwdriver



Angle heads for the TorqB® series you'll find from page 30.



Angle screwdriver	Torque	Speed max.	Adapter	Dimensions in mm	Weight in kg
TB-A-SO-10	1.5 - 9.0 Nm	540 rpm	1/4" - Form E	411 x 73 x 92	1.35
TB-A-SO-12	2.5 - 13.0 Nm	550 rpm	3/8" square	436 x 73 x 92	1.30
TB-A-SO-20	5.0 - 20.0 Nm	360 rpm	3/8" square	436 x 73 x 92	1.30
TB-A-SO-30	8.0 - 30.0 Nm	300 rpm	3/8" square	483 x 73 x 92	1.50
TB-A-SO-50	15.0 - 50.0 Nm	160 rpm	3/8" square	483 x 73 x 92	1.50
TB-A-SO-75	25.0 - 75.0 Nm	90 rpm	1/2" square	526 x 73 x 92	1.80

From 60 Nm on a torque reaction arm is recommended.
 18 V batteries without deep discharge protection can be used.
 Special types are not considered in this listing.
 Data of weight and length are without battery.

Cordless screwdriver technology



TorqB® Standard

Straight screwdriver



Straight screwdriver	Torque	Speed max.	Adapter	Dimensions in mm L x B x H	Weight in kg
TB-S-SO-4	1.0 - 4.0 Nm	1,050 rpm	1/4" - Form E	410 x 73 x 92	1.00
TB-S-SO-6	1.75 - 6.5 Nm	850 rpm	1/4" - Form E	410 x 73 x 92	1.00
TB-S-SO-10	2.0 - 10.0 Nm	570 rpm	1/4" - Form E	410 x 73 x 92	1.00
TB-S-SO-12	2.5 - 12.0 Nm	460 rpm	1/4" - Form E	410 x 73 x 92	1.00

18 V batteries without deep discharge protection can be used.
Special types are not considered in this listing.
Data of weight and length are without battery.

Cordless screwdriver technology

TotqB[®] PRO



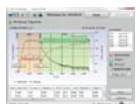
Programmable screwdriver with shut-off clutch and torque reaction sensor



- Precision shut-off clutch
 - Torque reaction sensor
 - Torque repetition accuracy +/- 10%
Cmk > 1,67 | Cm > 2
 - Programmable in 6 steps
 - Torque
 - Angle
 - rpm
 - Time
 - Handle vibration alarm
 - Multi color LED indication
 - Intelligent battery management
 - Brushless high-powered motor
 - Display of tightening results
 - Energy recovery of the braking energy extending the battery lifetime
- Maximum of ergonomic
 - LED lighting of the working area
 - Updates can be done through the USB
 - OLED-Display
 - Screw counter
 - Memory-Function
 - 100 individual programs
 - Optional Barcode & Wi-Fi
 - Min. 150,000 tightening results incl. torque and angle curve stored on the tool



More information about the controllers you'll find on our webpage.



More information about the program software you'll find on our webpage.

TotqB[®] PRO -Advantages toward the tools in the catalog on the pages before

Torque reaction sensor for torque monitoring

Can be accessed via a controller

Optional Wi-fi 2.4 & 5 GHz or radio 868 MHz

Optional barcode scanner



Cordless screwdriver technology



TorqB® PRO

Pistol screwdriver



Pistol screwdriver	Torque	Speed max.	Adapter	Dimensions in mm L x B x H	Weight in kg
TB-P-SOP-4	1.0 - 4.0 Nm	1.050 rpm	1/4" - Form E	230 x 51 x 206	1.25
TB-P-SOP-6	1.5 - 6.5 Nm	850 rpm	1/4" - Form E	230 x 51 x 206	1.25
TB-P-SOP-10	1.5 - 9.0 Nm	570 rpm	1/4" - Form E	230 x 51 x 206	1.25
TB-P-SOP-12	3.0 - 14.0 Nm	460 rpm	1/4" - Form E	230 x 51 x 206	1.25

18 V batteries without deep discharge protection can be used.
Special types are not considered in this listing.
Data of weight and length are without battery.

Cordless screwdriver technology

TorqB® PRO



Angle screwdriver



Angle heads for the TorqB® series you'll find from page 32.



Angle screwdriver	Torque	Speed max.	Adapter	Dimensions in mm L x B	Weight in kg
TB-A-SOP-10	1.5 - 9.0 Nm	540 rpm	1/4" - Form E	411 x 73 x 92	1.35
TB-A-SOP-12	2.5 - 13.0 Nm	550 rpm	3/8" square	436 x 73 x 92	1.30
TB-A-SOP-20	5.0 - 20.0 Nm	360 rpm	3/8" square	436 x 73 x 92	1.30
TB-A-SOP-30	8.0 - 30.0 Nm	300 rpm	3/8" square	483 x 73 x 92	1.50
TB-A-SOP-50	15.0 - 50.0 Nm	160 rpm	3/8" square	483 x 73 x 92	1.50
TB-A-SOP-75	25.0 - 75.0 Nm	90 rpm	1/2" square	526 x 73 x 92	1.80

From 60 Nm on a torque reaction arm is recommended.
 18V batteries without deep discharge protection can be used.
 Special types are not considered in this listing.
 Data of weight and length are without battery.

Cordless screwdriver technology



TorqB® PRO

Straight screwdriver



Straight screwdriver	Torque	Speed max.	Adapter	Dimensions in mm L x B x H	Weight in kg
TB-S-SOP-4	1.0 - 4.0 Nm	1,050 rpm	1/4" - Form E	410 x 73 x 92	1.00
TB-S-SOP-6	1.75 - 6.5 Nm	850 rpm	1/4" - Form E	410 x 73 x 92	1.00
TB-S-SOP-10	2.0 - 10.0 Nm	570 rpm	1/4" - Form E	410 x 73 x 92	1.00
TB-S-SOP-12	2.5 - 12.0 Nm	460 rpm	1/4" - Form E	410 x 73 x 92	1.10

18 V batteries without deep discharge protection can be used.
Special types are not considered in this listing.
Data of weight and length are without battery.

Cordless screwdriver technology

TotqB® PRO-M



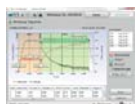
Programmable cordless screwdriver with torque and angle of rotation sensor



- Torque & Angle sensor
- Torque repetition accuracy +/- 7%
Cmk > 1,67 | Cm > 2
- Programmable in 6 steps
 - Torque
 - Angle
 - rpm
 - Time
- Handle vibration alarm
- Multi color LED indication
- Intelligent battery management
- Brushless high-powered motor
- Display of tightening results
- Energy recovery of the braking energy extending the battery lifetime
- Maximum of ergonomic
- LED lighting of the working area
- Updates can be done through the USB
- OLED-Display
- Screw counter
- Memory-Function
- 100 individual programs
- Optional Barcode & Wi-Fi
- Min. 150,000 tightening results incl. torque and angle curve stored on the tool



More information about the controllers you'll find on our webpage.



More information about the program software you'll find on our webpage.

TotqB® PRO-M - Advantages toward the tools in the catalog on the pages before

Rotating torque transducer for maximum of accuracy.
0.1° angle resolution

Torque transducer for exact shut-off

Optional WLAN 2.4 & 5 GHz or radio 868 MHz
Optional barcode scanner



Cordless screwdriver technology



TorqB® PRO-M

TOP Feature



Torque and angle of rotation sensor^{1,2,3}

The rotating torque transducer sensor of the TorqB® has the same precision as externally rotating torque sensors.
The total sensor deviation is less than 1% full scale.
The angle resolution is precisely 0,1°.

VDI/VDE 2647 able +/- 7%

Cmk > 1,67

Cm > 2

Pistol screwdriver



Pistol screwdriver	Torque	Speed max.	Adapter	Dimensions in mm L x B x H	Weight in kg
TB-P-EC-10	0.8 - 11.0 Nm	570 rpm	1/4" - Form E	230 x 51 x 206	1.15
TB-P-EC-12	1.0 - 14.0 Nm	460 rpm	1/4" - Form E	230 x 51 x 206	1.15

18 V batteries without deep discharge protection can be used.

Cordless screwdriver technology

TorqB® PRO-M

Angle screwdriver



Angle heads for the TorqB® series you'll find from page 34.



Angle screwdriver	Torque	Speed max.	Adapter	Dimensions in mm L x B x H	Weight in kg
TB-A-EC-10	1.5 - 10.0 Nm	540 rpm	1/4" - Form E	411 x 73 x 92	1.35
TB-A-EC-12	2.0 - 13.0 Nm	600 rpm	3/8" square	451 x 73 x 92	1.40
TB-A-EC-20	5.0 - 20.0 Nm	400 rpm	3/8" square	441 x 73 x 92	1.20
TB-A-EC-30	8.0 - 32.0 Nm	290 rpm	3/8" square	541 x 73 x 92	1.20
TB-A-EC-55	15.0 - 55.0 Nm	160 rpm	3/8" square	600 x 73 x 92	1.40
TB-A-EC-85	25.0 - 85.0 Nm	90 rpm	1/2" square	644 x 73 x 92	2.90

From 60 Nm on a torque reaction arm is recommended.
 18 V batteries without deep discharge protection can be used.
 Special types are not considered in this listing.
 Data of weight and length are without battery.

Cordless screwdriver technology



TorqB® PRO-M

Technical Data



Straight screwdriver	Torque	Speed max.	Adapter	Dimensions in mm L x B x H	Weight in kg
TB-S-EC-6	0.6 - 6.5 Nm	850 rpm	1/4" - Form E	311 x 73 x 92	0.95
TB-S-EC-10	0.8 - 11.0 Nm	570 rpm	1/4" - Form E	311 x 73 x 92	0.95
TB-S-EC-12	1.0 - 14.0 Nm	460 rpm	1/4" - Form E	311 x 73 x 92	0.95

18 V batteries without deep discharge protection can be used.
Special types are not considered in this listing.
Data of weight and length are without battery.

Cordless screwdriver technology

TotqB® EC²



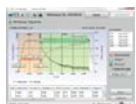
Programmable battery screwdriver with action and reaction sensor (redundant)



- Torque & Angle sensor + redundant torque reaction sensor
 - Torque repetition accuracy +/- 7%
Cmk > 1,67 | Cm > 2
 - Programmable in 6 steps
 - Torque
 - Angle
 - rpm
 - Time
 - Handle vibration alarm
 - Multi color LED indication
 - Intelligent battery management
 - Brushless high-powered motor
 - Display of tightening results
 - Energy recovery of the braking energy extending the battery lifetime
- Maximum of ergonomic
 - LED lighting of the working area
 - Updates can be done through the USB
 - OLED-Display
 - Screw counter
 - Memory-Function
 - 100 individual programs
 - Optional Barcode & Wi-Fi
 - Min. 150,000 tightening results incl. torque and angle curve stored on the tool



More information about the controllers you'll find on our webpage.



More information about the program software you'll find on our webpage.

TotqB® EC² - Advantages toward the tools in the catalog on the pages before

Action and reaction sensor
Play it safe!

Thanks to the second sensor as redundant a maximum of process reliability will be

Optional Wi-fi 2.4 & 5 GHz
Optional barcode scanner



Cordless screwdriver technology



TorqB® EC²

TOP Features



Torque and angle of rotation sensor^{1,2,3}

The rotating torque transducer sensor of the TorqB® has the same precision as externally rotating torque sensors.

The total sensor deviation is less than 1% full scale.

The angle resolution is precisely 0,1°.

VDI/VDE 2647 able +/- 7%

Cmk > 1,67

Cm > 2

x 2

With action and reaction sensor (redundant)

The torque and angle of rotation sensor given above (action) cares for a exact fastening. The second sensor (reaction) fulfills the claims of redundant of the VDI/VDE 2862 sheet 1.

Pistol screwdriver



Pistol screwdriver	Torque	Speed max.	Adapter	Dimensions in mm	Weight in kg
TB-P-EC2-10	0.8 - 11.0 Nm	570 rpm	1/4" - Form E	230 x 51 x 206	1.15
TB-P-EC2-12	1.0 - 14.0 Nm	460 rpm	1/4" - Form E	230 x 51 x 206	1.15

Cordless screwdriver technology

TorqB[®] EC²



Angle screwdriver



Angle heads for the TorqB[®] series you'll find from page 36.



Angle screwdriver	Torque	Speed max.	Adapter	Dimensions in mm	Weight in kg
TB-A-EC2-10	1.5 - 10.0 Nm	540 rpm	1/4" - Form E	411 x 73 x 92	1.35
TB-A-EC2-12	2.0 - 13.0 Nm	600 rpm	3/8" square	451 x 73 x 92	1.40
TB-A-EC2-20	5.0 - 20.0 Nm	400 rpm	3/8" square	441 x 73 x 92	1.20
TB-A-EC2-30	8.0 - 32.0 Nm	290 rpm	3/8" square	541 x 73 x 92	1.20
TB-A-EC2-55	15.0 - 55.0 Nm	160 rpm	3/8" square	600 x 73 x 92	1.40
TB-A-EC2-85	25.0 - 85.0 Nm	90 rpm	1/2" square	644 x 73 x 92	2.90

From 60 Nm on a torque reaction arm is recommended.
 18 V batteries without deep discharge protection can be used.
 Special types are not considered in this listing.
 Data of weight and length are without battery.

Cordless screwdriver technology



TorqB® EC²

Straight screwdriver



Straight screwdriver	Torque	Speed max.	Adapter	Dimensions in mm L x B x H	Weight in kg
TB-S-EC2-6	0.6 - 6.5 Nm	850 rpm	1/4" - Form E	311 x 73 x 92	0.95
TB-S-EC2-10	0.8 - 11.0 Nm	570 rpm	1/4" - Form E	311 x 73 x 92	0.95
TB-S-EC2-12	1.0 - 14.0 Nm	460 rpm	1/4" - Form E	311 x 73 x 92	0.95

18 V batteries without deep discharge protection can be used.
Special types are not considered in this listing.
Data of weight and length are without battery.

Cordless screwdriver technology

Angle heads for *TotqB*[®]

Technical Data

Angle screwdriver	Compatible angle head	Torque max.	Adapter	Length in mm
TB-A-L-10 TB-A-SO-10 TB-A-SOP-10 TB-A-EC-10 TB-A-EC2-10	WI-L-1*	10 Nm	1/4" hexagon socket form C	110
	WI-L-2*	10 Nm	1/4" square	110
	WI-L-4*	10 Nm	1/4" hexagon socket form E	110
	WI-L-SW8*	10 Nm	wrench size 8	110
	WI-L-SW10*	10 Nm	wrench size 10	110
TB-A-L-12 TB-A-SO-12 TB-A-SOP-12	WI-SO-20-3/8	12 Nm	3/8" square	125
TB-A-EC-12 TB-A-EC2-12	WI-L-12-3/8	12 Nm	3/8" square	140
	WI-L-12-1/4	12 Nm	1/4" square	140
	WI-L-12-1/4-HEX-C	12 Nm	1/4" hexagon socket form C	140
	WI-L-12-1/4-HEX-E	12 Nm	1/4" hexagon socket form E	140
TB-A-L-20 TB-A-SO-20 TB-A-SOP-20	WI-SO-20-3/8	20 Nm	3/8" square	125
TB-A-EC-20 TB-A-EC2-20	WI-L-20-1/4	20 Nm	1/4" square	130
	WI-L-20-3/8	20 Nm	3/8" square	130
TB-A-L-30 TB-A-SO-30 TB-A-SOP-30	WI-SO-30-3/8	35 Nm	3/8" square	172
TB-A-EC-30 TB-A-EC2-30	WI-L-30-3/8	35 Nm	3/8" square	230
	WI-L-30-1/2	35 Nm	1/2" square	230
TB-A-L-55 TB-A-SO-55 TB-A-SOP-55	WI-SO-55-3/8	55 Nm	3/8" square	172
TB-A-EC-55 TB-A-EC2-55	WI-L-55-3/8	55 Nm	3/8" square	289
	WI-L-55-1/2	55 Nm	1/2" square	289
TB-A-L-75 TB-A-SO-75 TB-A-SOP-75	WI-B-70	75 Nm	3/8" square	215
TB-A-EC-85 TB-A-EC2-85	WI-L-85-1/2	85 Nm	1/2" square	333

* 25 / 50 / 125 mm extensions available

- Torque transmission with a high accuracy



Intelligent screwdriving technology

Not only very exact, also intelligent. Control of all relevant process parameters.



Process handling

Complete process monitoring thanks to display, barcode scanner, Wi-fi and a controller.



www.torqb.com