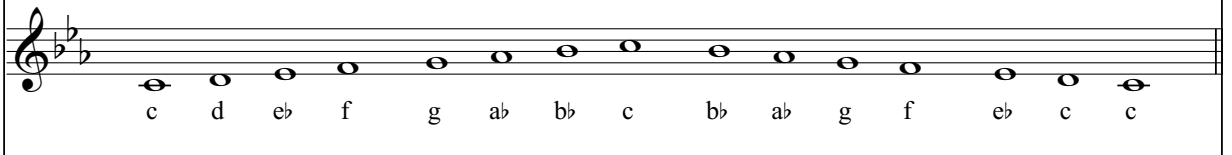


c minor

relative major: E \flat +
key signature: b \flat e \flat a \flat

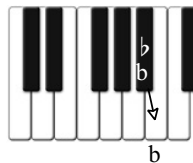
c minor *natural*

The natural minor simply borrows the key signature of it's relative, E \flat major.

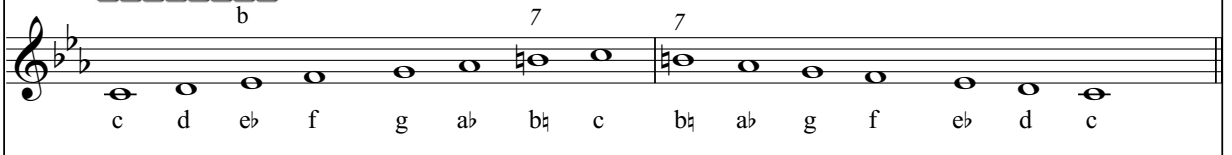


c minor *harmonic*

The 7th note is raised a half step ascending and descending the scale.

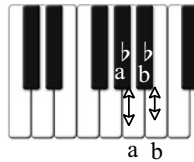


The 7th note is b \flat (see the key signature) and it is raised to b \natural creating the *leading note*.

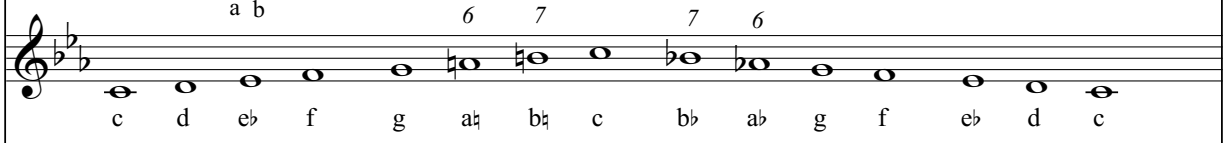


g minor *melodic*

The 6th and 7th notes are raised a half step ascending the scale and lowered a half step descending the scale.



Ascending the scale the 6th note is a \sharp (see the key signature) and is raised to a \sharp .



The following excerpt is from the FIRST MOVEMENT of BEETHOVEN's *Symphony No. 5 in C minor*.
Note the b \natural leading note in the score.

