



W. SEITCHIK  
& SONS, INC.

FALL & WINTER COLLECTION  
2024 - 2025



# HARMONY CLOTHES IN-STOCK SERVICE

LEADERS IN SPECIAL SIZE CLOTHING  
SERVICING SPECIALTY RETAILERS FOR 126 YEARS

SUIT SEPARATES	PAGE 1
CONVENTIONAL, PORTLY, JUMBO, MODERN FIT SUITS	PAGE 2-4
SPORTCOATS, BLAZERS & VESTS	PAGE 5-13
OUTERWEAR	PAGE 14-16
OUTERWEAR DESCRIPTIONS	PAGE 17

## DROP CHART

### CONVENTIONAL FIT

Chest Measurement	36	38	40	42	44	46	48	50	52	54	56	58	60	62	64	66
Conventional Fit-Waist	30	32	34	36	39	41	44	46	48	50	52	54	56	58	60	62

### MODERN FIT

Chest Measurement	36	38	40	42	44	46	48	50	52	54	56	58	60
Modern Fit-Waist	29	31	33	36	38	40	42	45	47	49	52	54	56

### PORTLY FIT

Chest Measurement	38	40	42	44	46	48	50	52	54	56	58	60	62	64	66	68	70	72	74	76	78	80
Portly Fit-Waist	35	37	39	42	44	46	49	51	53	56	58	60	62	64	66	68	70	72	74	76	78	80

DIRECT LINE TO ORDER DEPARTMENT  
FOR CUSTOMER SERVICE

**1-800-523-0814**

All Other Departments • (215) 743-0400

Convenient Fax Number for Ordering • (215) 743-5914

Eastern Time: Monday thru Friday • 8:00 a.m. - 5:00 p.m.

**(PICTURED ON COVER, REDA SPORT COAT 2134)**



2127

2126

2128

2137

2133

2134

2125



**70121**  
Black

**70122**  
Navy

**70123**  
Charcoal

**70126**  
Grey

**70132**  
Cobalt

## *SUITED SEPARATES*

REVERSE TWIST PERFORMANCE FABRIC

53% POLYESTER 44% WOOL 3% LYCRA

LYCRA

### CONVENTIONAL FIT

#### ARDON COAT

2 BUTTON-CENTER VENT

Regular	38-60
Short	38-50
Long	40-60
X-Long	40-60

### PORTLY FIT

#### PRINCETON COAT

2 BUTTON-CENTER VENT

Portly Regular	42-68
Portly Short	42-60
Portly Long	50-68

### AIDEN TROUSERS

PLAIN FRONT

Regular	30-68
Short	30-60
Long	32-68



70126

YEAR ROUND CLASSICS

100% WORSTED WOOL

PORTLY FIT

CONDOR

2 BUTTON-SIDE VENT  
PLAIN FRONT

Portly Regular	44-70
Portly Short	42-60
Portly Long	50-72



**67371**  
Black Twill

**67372**  
Navy Twill

SUPER 120's

CONVENTIONAL FIT

BRANDON

2 BUTTON-SIDE VENT  
PLAIN FRONT

Regular	38-60
Short	36-48
Long	40-60
X-Long	46-54



**67381**  
Black Mini Bone

*Also available  
in Portly Fit*

Portly  
Short 44-54

**68101**  
Black

**67382**  
Blue Mini Bone

**47216**  
Grey

**47218**  
Burgundy

**47222**  
Cobalt

**LUXURY WOOL SUITS**  
**SUPER 100's**  
**WURSTED WOOL SUIT**

100% WORSTED WOOL

**MODERN FIT**

**PINOT**

2 BUTTON-SIDE VENT-PLAIN FRONT

Regular	36-60
Short	38-46
Long	40-60

**DROP CHART**

36-40 - 7"  
42-48 - 6"  
50-54 - 5"  
56-60 - 4"



47216

3

SUITS



*Super 130's Merino Wool*  
*100% Wool*

CONVENTIONAL FIT

**BARCLAY**

2 BUTTON-SIDE VENT  
PLAIN FRONT  
1/2 CANVAS CONSTRUCTION

Regular	40-52
Short	42-46
Long	42-54



**72102**  
Navy



**72103**  
Grey



*100% Wool*

MODERN FIT

**PINOT**

2 BUTTON-SIDE VENT-PLAIN FRONT

Regular	38-56
Short	38-46
Long	42-56

DROP CHART

36-40 - 7"  
42-48 - 6"  
50-54 - 5"  
56-60 - 4"



**68102**  
Dark Navy



**68106**  
Navy



**2002**  
New Blue

Regular 38-60  
Short 38-48  
Long 40-60  
X-Long 44-56



**2122**  
Blue w/Green  
Overplaid



**2124**  
Rust Plaid



**2125**  
Teal Plaid

SPORTCOATS

100% WOOL



*Super 130's*  
*Fabric Woven in Italy*  
*1/2 Canvas Construction*  
*Full Sleeve Placket - Jacquard Lining*

CONVENTIONAL FIT

LUCCA

2 BUTTON-SIDE VENT

Regular	38-52
Short	40-46
Long	40-52



2124

MARLANE

# Comfort Travel Knit

Roll it up,  
put it in your suitcase



43% WOOL 33% VISCOSE  
22% POLYESTER 2% ELASTINE

## MODERN FIT

### CERUS

2 BUTTON-SIDE VENT  
LOWER OPEN PATCH POCKETS

Regular	38-56
Short	42-46
Long	40-50



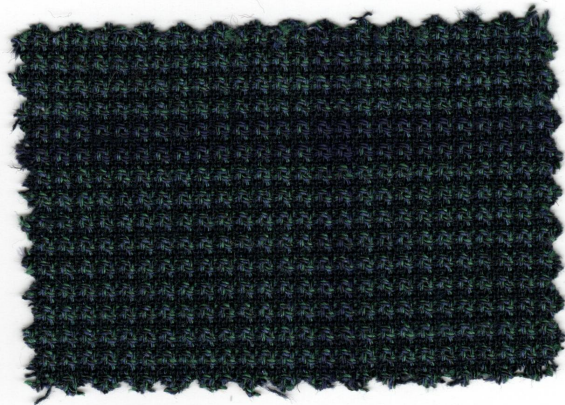
2085

Introducing...  
The Ultimate Travel Coat

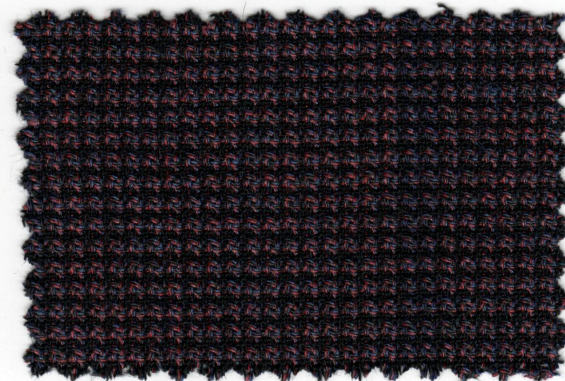
Totally Unconstructed  
No Shoulder Pads, French Faced,  
Yoke Lining



2088  
Inside Details



2085  
Green Plaid



2088  
Burgundy Plaid





**1752**  
Navy Plaid



**1753**  
Charcoal Plaid



**1758**  
Plum Plaid

*ALL WOOL FALL  
SPORTCOAT FAVORITES*

100% WOOL

CONVENTIONAL FIT

LONDON

2 BUTTON-SIDE VENT

Regular	38-60
Short	38-48
Long	40-60

PORTLY FIT

COVENTRY

2 BUTTON-CENTER VENT

Portly Regular	44-60
Portly Short	42-56



1758

**WOOL TOUCH FAVORITES  
SPORTCOATS**

70% POLYESTER 30% VISCOSE

**CONVENTIONAL FIT**

**LONDON**

2 BUTTON-SIDE VENT

Regular	38-60
Short	38-48
Long	40-60

**PORTLY FIT**

**COVENTRY**

2 BUTTON-CENTER VENT

Portly Regular	44-60
Portly Short	42-56



1242



**1242**  
Blue Check

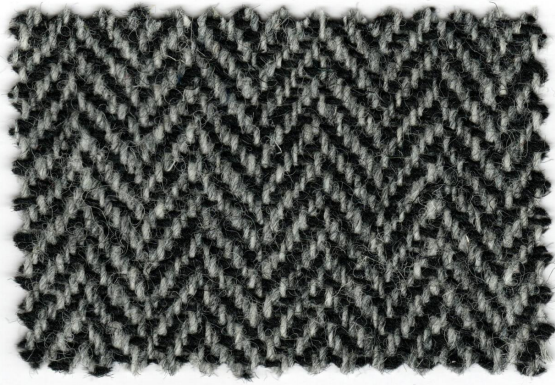
**1243**  
Grey Plaid

**1248**  
Burgundy Plaid



**1236**  
Grey Heather Plaid

**1238**  
Navy Plaid



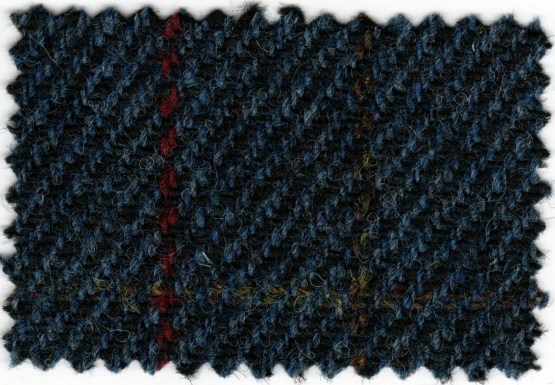
**1343**  
Black & White  
Herringbone



**1345**  
Olive  
Windowpane



**1349**  
Burnt Orange  
Overplaid



**1352**  
Blue  
Overplaid

SPORTCOATS

100% WOOL



CONVENTIONAL FIT

CLARK

2 BUTTON-CENTER VENT

Regular	38-52
Short	38-46
Long	40-52



1349

WOOL BLAZERS

100% WOOL

CONVENTIONAL FIT

SIENNA

2 BUTTON-CENTER VENT

Regular	36-60
Short	36-50
Long	38-60
X-Long	42-60

PORTLY FIT

COVENTRY

2 BUTTON-CENTER VENT

Portly Regular	42-72
Portly Short	40-60
Portly Long	50-72



2931  
Black



2932  
Navy

BLENDED BLAZERS

78% POLYESTER 20% RAYON 2% SPANDEX

CONVENTIONAL FIT

SIENNA

2 BUTTON-CENTER VENT

Regular	36-60
Short	36-54
Long	38-60
X-Long	42-60

PORTLY FIT

COVENTRY

2 BUTTON-CENTER VENT

Portly Regular	38-72
Portly Short	40-60
Portly Long	46-72



1191  
Black



1192  
Navy



2982  
Navy



2961  
Black



2967  
Camel

LUXURY FABRICS

PURE CASHMERE



SPORTCOATS

100% CASHMERE

CONVENTIONAL FIT

LONDON

2 BUTTON-SIDE VENT

Regular	40-52
Short	40-46
Long	42-52

CAMEL HAIR CLASSIC

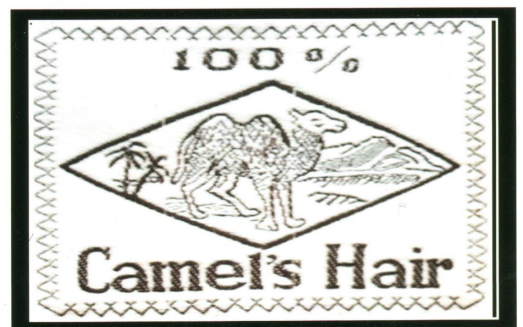
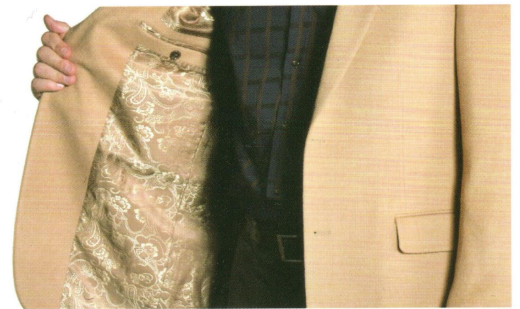
100% CAMEL HAIR

CONVENTIONAL FIT

SIENNA

2 BUTTON-CENTER VENT

Regular	38-60
Short	38-46
Long	40-56
X-Long	44-56



*SPORTCOATS  
YEAR ROUNDERS*

100% WOOL

CONVENTIONAL FIT

**SIENNA**

2 BUTTON-CENTER VENT

Regular	36-60
Short	36-50
Long	40-60
X-Long	42-60

PORTLY FIT

**COVENTRY**

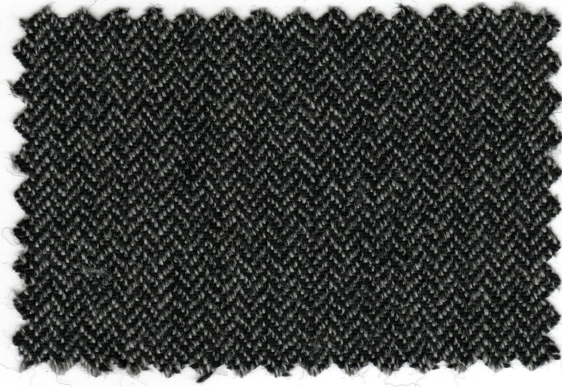
2 BUTTON-CENTER VENT

Portly Regular	42-72
Portly Short	42-60
Portly Long	50-72

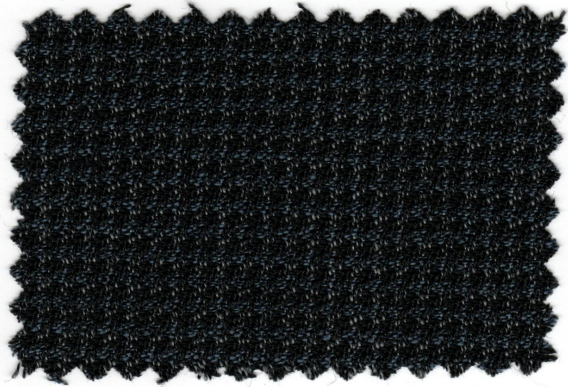


1564

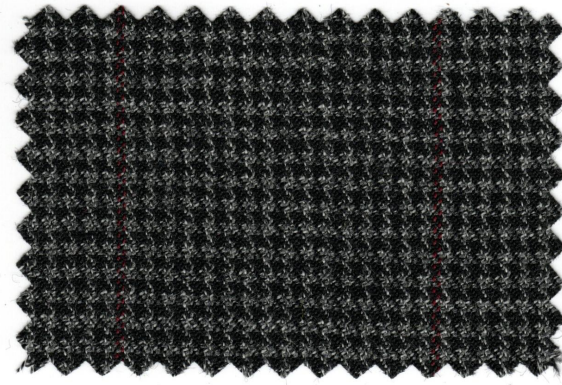
12



**1303**  
Grey  
Herringbone



**1562**  
Blue Check



**1563A**  
Grey  
Overplaid



**1564**  
Taupe  
Houndstooth



**1141**  
Black



**1149**  
Camel

***SPORTCOATS  
SUEDE TOUCH***

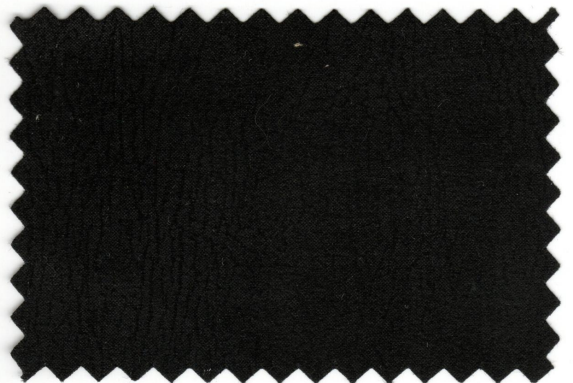
100% MICROFIBER

**CONVENTIONAL FIT**

**LONDON**

2 BUTTON-SIDE VENT

Regular	36-60
Short	36-48
Long	40-60
X-Long	42-58



**1021**  
Black

Regular	38-60
Short	38-48
Long	40-60
X-Long	44-48

Chase Vest  
S thru XL

Genesis Vest  
S thru 2X



**1024**  
Brown

Regular	38-60
Short	36-46
Long	40-60
X-Long	42-60

***FAUX LEATHER***

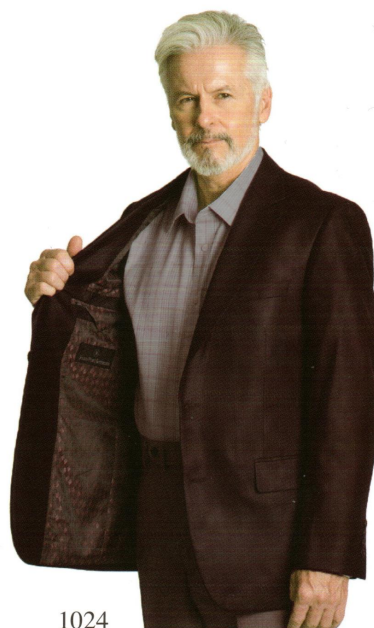
100% MICROFIBER

***SPORTCOATS & VESTS***

**CONVENTIONAL FIT**

**LONDON**

2 BUTTON-SIDE VENT



1024

## TOP COAT FAVORITES

CASHMERE WOOL BLEND

### SANDER

Regular	38-60
Short	38-48
Long	40-60
X-Long	42-56

*PLEASE SEE  
PAGE 17 FOR  
OUTERWEAR  
DESCRIPTIONS*



**80101**  
Black

90% WOOL  
10% CASHMERE

**80103**  
Charcoal

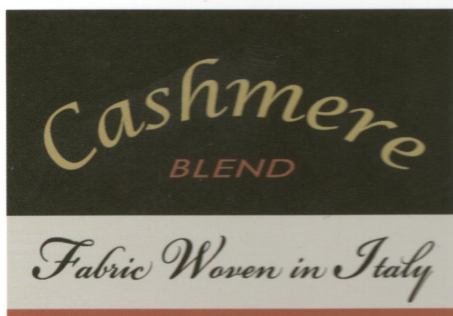
90% WOOL  
10% CASHMERE

## TOP COAT FASHION

CASHMERE BLEND  
IN 36" LENGTH COAT

### STANTON

Regular	38-56
Short	38-46
Long	40-56



70% WOOL 20% NYLON  
10% CASHMERE



**80104**  
Vicuna

70% WOOL  
20% NYLON  
10% CASHMERE

**80106**  
Cobalt

70% WOOL  
20% NYLON  
10% CASHMERE

**80109**  
Burgundy

70% WOOL  
20% NYLON  
10% CASHMERE





**90211**

Black

Regular 36-60

Short 36-48

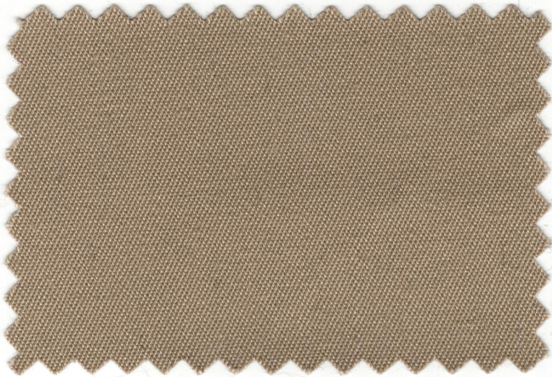
Long 40-60

*ALL WEATHER RAINCOAT*

(ZIP-OUT LINER)

60% COTTON  
40% POLYESTER

**BUSTER**



**90217**

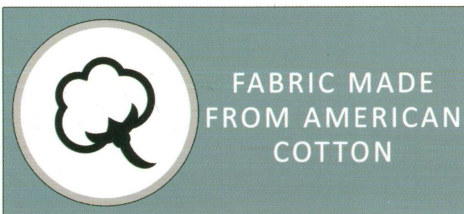
Khaki

Regular 36-60

Short 36-48

Long 40-60

*PLEASE SEE  
PAGE 17 FOR  
OUTERWEAR  
DESCRIPTIONS*



**TOP COAT FAVORITES**

60% WOOL 30% POLYESTER  
10% VISCOSE

**SANDER**

Regular 36-60  
Short 36-48  
Long 40-60  
X-Long 42-56



**JEFFREY**

Regular 38-60  
Short 38-48  
Long 40-60  
X-Long 44-56

**JACKSON**

Regular  
S, M, L, XL,  
2X, 3X, 4X, 5X  
Tall  
LT, XLT,  
2XT, 3XT, 4XT

**TYSON**

Regular 36-60  
Short 38-48  
Long 38-60

Sander  
80113

Jeffrey  
80111

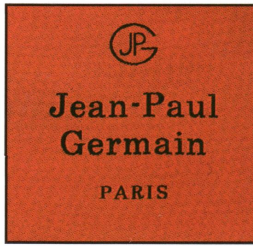
Tyson  
80111



**80111**  
Black



**80113**  
Charcoal



# HARMONY OUTERWEAR

Featuring  
**JEAN-PAUL GERMAIN DESIGNS**



SANDER

Single breasted model featuring button through front, notch lapel, slash pockets, set-in sleeves, bluff edges, with two inside pockets plus a scarf pocket. 45" length.



JEFFREY

Same as the Sander, only in a more modern, updated, 38" length.



STANTON

3 button, single breasted, notch lapel, center vent, 36" Topcoat. Two inside pockets plus a scarf pocket. Fully tailored.



TYSON

Four button, buttons to the neck, 34" length (mid thigh), center vent, contrast undercollar, two slash pockets, four inside pockets including scarf pocket. Fully tailored.



JACKSON

This is our 34" walking coat, featuring a 4 button thru front, slash pockets, ball collar & satin lining. This coat has 3 inside pockets. Perfect for all week to weekends!



BUSTER

Fly front, combination all weather and raincoat with zip-out liner: 1/2 quilted 1/2 wool blend. 46" length.



W. SEITCHIK & SONS, INC.

10073 SANDMEYER LANE

PHILADELPHIA, PA 19116

(215) 743-0400

(800) 523-0814

FAX: (215) 743-5914

NEW YORK SHOWROOM

(212) 398-2288

Email: [Harmony@wseitchik.com](mailto:Harmony@wseitchik.com)

[www.Harmony-Clothes.com](http://www.Harmony-Clothes.com)