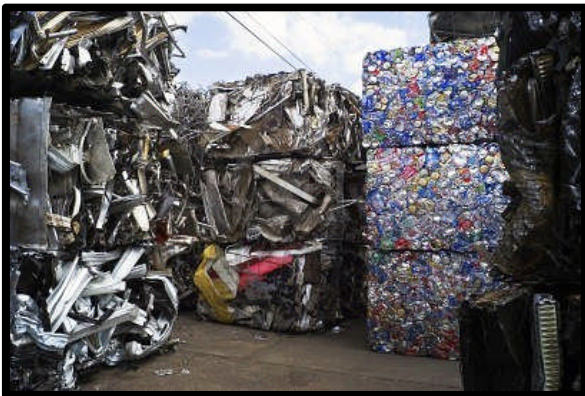


## Metal Harvester

### EC Treatment of tank 5040

	<u>Raw</u>	<u>pH 5.3</u>	<u>% Removal</u>	<u>pH 8.3</u>	<u>% Removal</u>	<u>pH 9.4</u>	<u>% Removal</u>
Al	4.365	0.5577	87.22%	0.378	91.34%	0.4312	90.12%
As	0.1018	<0.05	>50.88%	0.4011	?	<0.05	>50.80
Ba	0.0145	<0.0010	>93.10%	<0.001	>93.1%	<0.0010	>93.10%
Ca	19.59	2.656	86.40%	3.257	83.4%	2.500	87.20%
Cd	0.1252	<0.0040	>96.81%	0.0151	87.94%	0.0126	89.94%
Co	0.1238	0.0214	82.71%	0.0515	58.40%	0.0451	63.57%
Cr	0.3952	0.0168	95.97%	0.0252	93.62%	0.0246	93.78%
Cu	0.7984	<0.0020	>99.75%	<0.002	>99.75%	<0.0020	>99.70%
Fe	68.34	0.6054	99.11%	0.4136	99.39%	0.1939	99.72%
Mg	13.15	0.3606	97.26%	0.0444	99.66%	0.0766	99.42%
Mn	1.061	0.0568	94.65%	0.0452	95.74%	0.0184	98.27%
Ni	1.683	0.4177	75.18%	0.5520	67.20%	0.5213	69.03%
P	605.3	286.7	52.60%	437.7	27.7	13.3	31.7%
Pb	0.3497	<0.0250	>92.85%	<0.025	>92.85%	0.0278	92.05%
Se	0.0763	<0.0500	>34.47%	0.1909	?	0.1049	?
Sn	0.2130	0.0735	65.49%	<0.020	>90.61%	0.0960	54.93%
V	0.2621	<0.0020	>99.24%	0.0023	99.12	0.0035	98.66%
Zn	3.674	0.0419	98.86%	0.0520	98.58%	0.0422	98.85%



15 gpm Electrocoagulation Unit