



THOMPSON MEAT MACHINERY

Thompson Mk3 Bandsaw

PRECISION MACHINED PARTS ARE USED IN MANUFACTURE OF TOP AND LOWER GUIDE ASSEMBLIES

HIGH QUALITY DOOR CATCHES THAT DO NOT ALLOW THE DOOR TO ACCIDENTALLY SPRING OPEN

REMOVABLE BLADE GUARD

FULLY INTEGRATED SAFETY SYSTEM

ON/OFF AND EMERGENCY STOP CONTROL

HIGH CLEARANCE FROM FLOOR ALLOWING TO CLEAN UNDER WITH EASE



MACHINE IN COMPLIANCE WITH AUSTRALIAN STANDARDS AND REGULATIONS

SAFETY FLANGES ON STAINLESS STEEL OR TINNED WHEELS. Precision Machined and Balanced Ensuring Smooth and Safe Operation.

950 m/min BLADE SPEED

1.5KW RAKED MOTOR

LARGE STAINLESS STEEL BONE DUST BIN

ADJUSTABLE FEET

“THOMPSON TOUGH”

LEADING AUSTRALIAN MANUFACTURERS OF MEAT PROCESSING MACHINERY

THOMPSON Mk3 BANDSAW

The **THOMPSON Mk3 BANDSAW** offers a **RELIABLE SMOOTH CUTTING OPERATION** delivered by a direct drive motor system. The direct drive motor system also **PROVIDES POSITIVE AND CONSTANT BLADE SPEED** and **ELIMINATES THE REQUIREMENTS OF FREQUENT ADJUSTMENTS AND REPLACEMENT.**

It is constructed from **HIGH QUALITY STAINLESS STEEL** and offers many features normally associated with more expensive machinery. This is a very popular choice of Bandsaw in butcher shops and supermarket facilities.

The Thompson Mk3 Bandsaw **HAS FULLY INTEGRATED SAFETY SYSTEMS INCLUDING BRAKE MOTORS.** Brake Motor which **ALLOWS THE BLADE TO STOP WITHIN APPROXIMATELY 4 SEC** when stop button is activated. **THIS MINIMIZES THE POSSIBILITY OF ACCIDENTS** caused through blade run on.

Purpose **DESIGNED HEAVY DUTY TINNED WHEELS** with **SAFETY FLANGES PREVENT THE BLADES FROM DISLODGING** when cutting greasy wet product, **ELIMINATING POSSIBILITY OF OPERATOR INJURY.**

A **POWERFUL 1.5 kW 8 POLE MOTOR** ensures **CONTINUOUS SMOOTH CUTTING OPERATION** through products.

LIMIT SWITCHES on both top and bottom doors **ENSURE THAT BANDSAW CANNOT BE ACCIDENTALLY STARTED** during and after cleaning operations **ELIMINATING OPERATOR INJURY.** Limit swiches are **INTERNALLY WIRED TO IMPROVE THE SAFETY, HYGIENE AND APPEARANCE**

BOTTOM WHEELS are **FITTED WITH TAPERLOCK HOUSINGS** for **EASY REMOVABLE** and it **CANNOT BECOME SEIZED ON THE SHAFT** throughout the life of the machine. **QUICK AND SIMPLE DISASSEMBLY ENSURES EASE OF CLEANING.**

HIGH QUALITY ELECTRICAL COMPONENTS used in MK3 Bandsaw are rated above standard design requirements **TO ENSURE LONGER LIFE AND RELIABILITY** in harsh environment.

STAINLESS STEEL WHEEL SCRAPERS are fitted to **REDUCE PRODUCT BUILD UP BETWEEN THE WHEELS AND BLADE.**

The **BLADE TENSION ASSEMBLY AUTOMATICALLY ADJUSTS THE BLADE** to a factory preset tension.

The **HIGH CLEARANCE** from floor **ALLOWS EASY AND THOROUGH CLEANING** providing maximum hygiene.

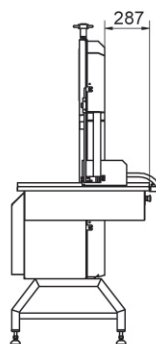
RECOMMENDED OPTIONS

- Heavy duty emergency stop kick switch
- Stainless Steel flywheels
- Thickness Guide

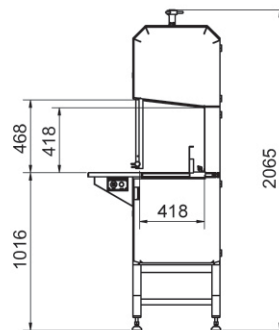
THOMPSON Mk3 BANDSAW SPECIFICATIONS:

Dimension	
Overall Height	2065 mm
Cutting Height	440 mm
Floor Area (Door Closed)	860L x 900W (mm x mm)
Floor to Table Height	1016 mm
Cutting Table Dimension	851 x 749 mm
Cutting Throat Height	418 mm
Cutting Throat Width	418 mm
Power	
Power Supply (with Brake)	10 Amp D Curve Circuit Breaker
Blade	
Blade Length	3290mm
Blade Width	16mm
Blade Speed	950m/min (3100 ft/min)
Drive	1.5 kW 8 pole 415V 50Hz
Shipping Dimension	
Shipping Weight	233kg
Shipping Size	1000L x 1000W x 2000H (mm x mm x mm)

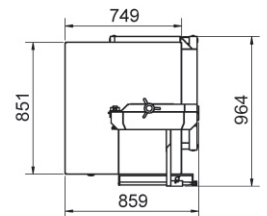
Technical data is to be used as a guide only and is subject to change without notice



Left Side View



Front View



Top View

Manufactured in accordance with Australian Standards and regulations



Delivering quality at the right price

Dussen Pty Ltd
Unit 3/70 Andrew Street Wynnum, Qld Australia 4178

Phone: (+61) 7 3393 6552 Fax: (+61) 7 3393 6352
Email: sales@dussen.com.au Website: www.dussen.com.au