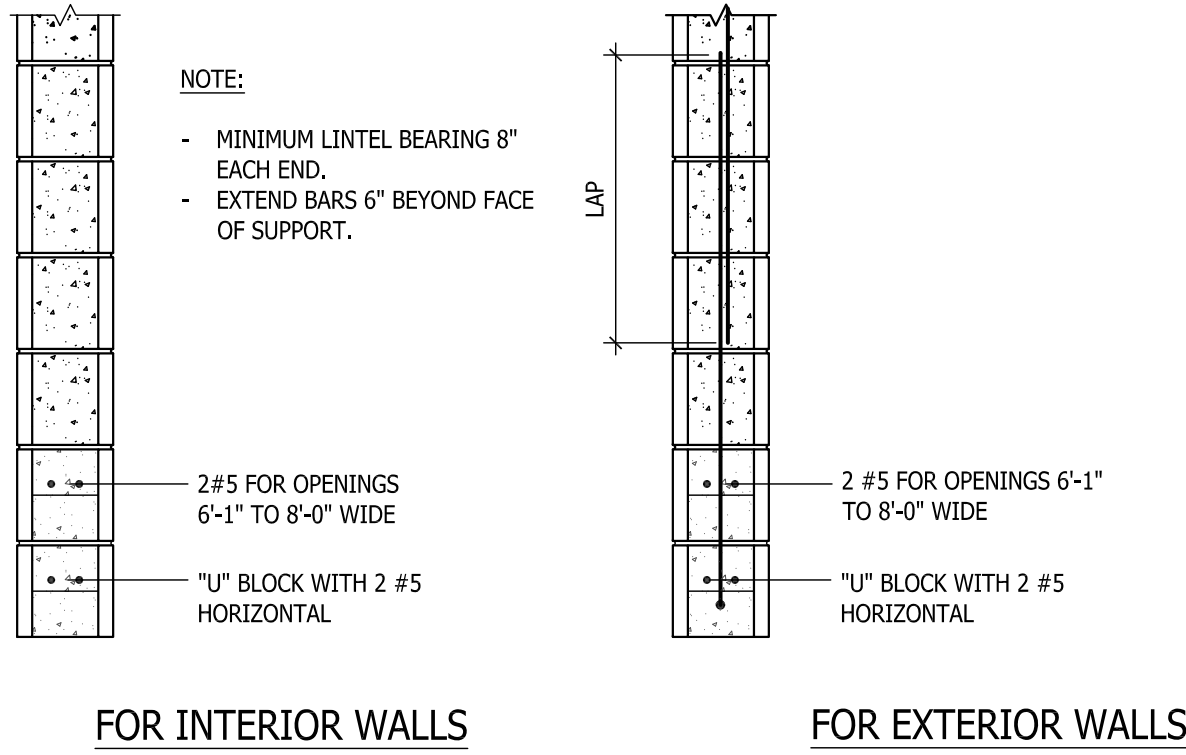
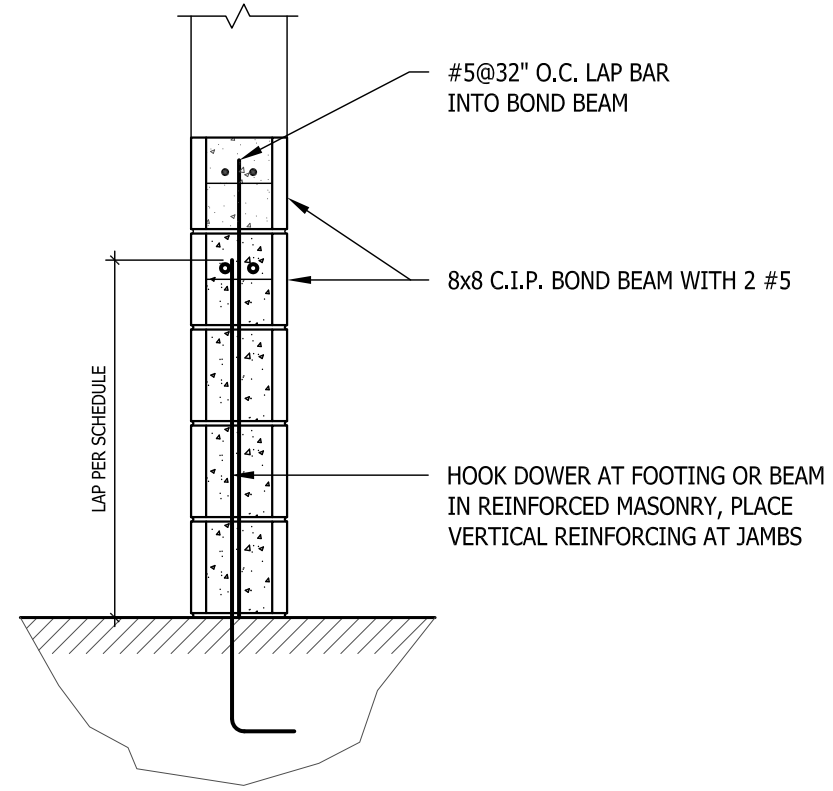
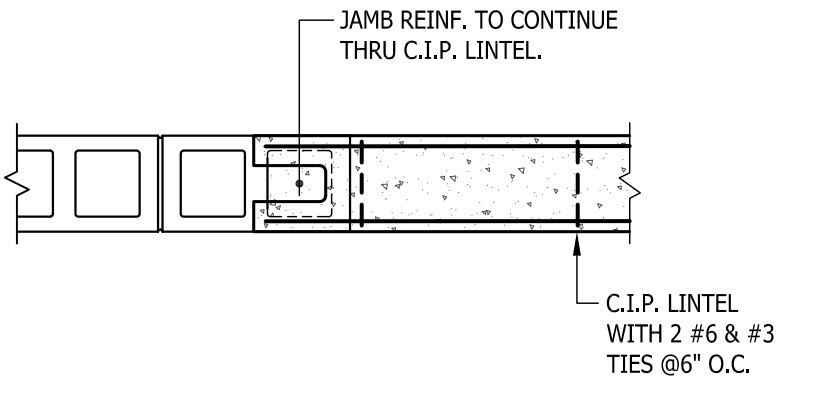
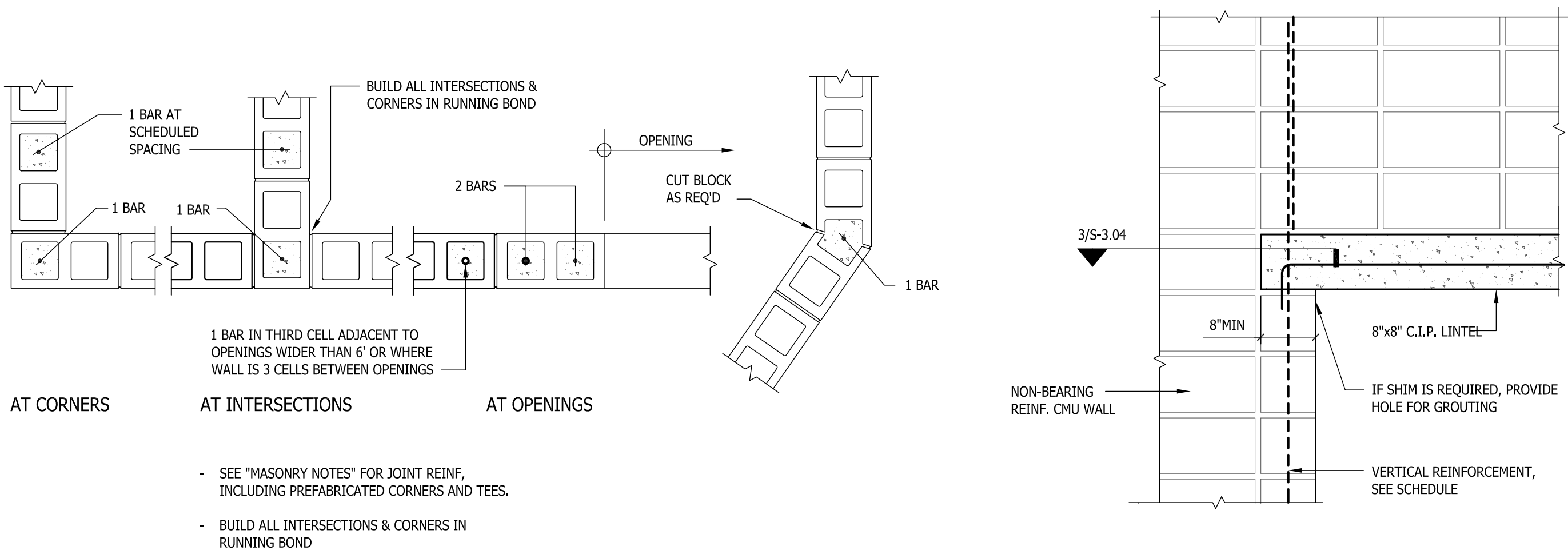
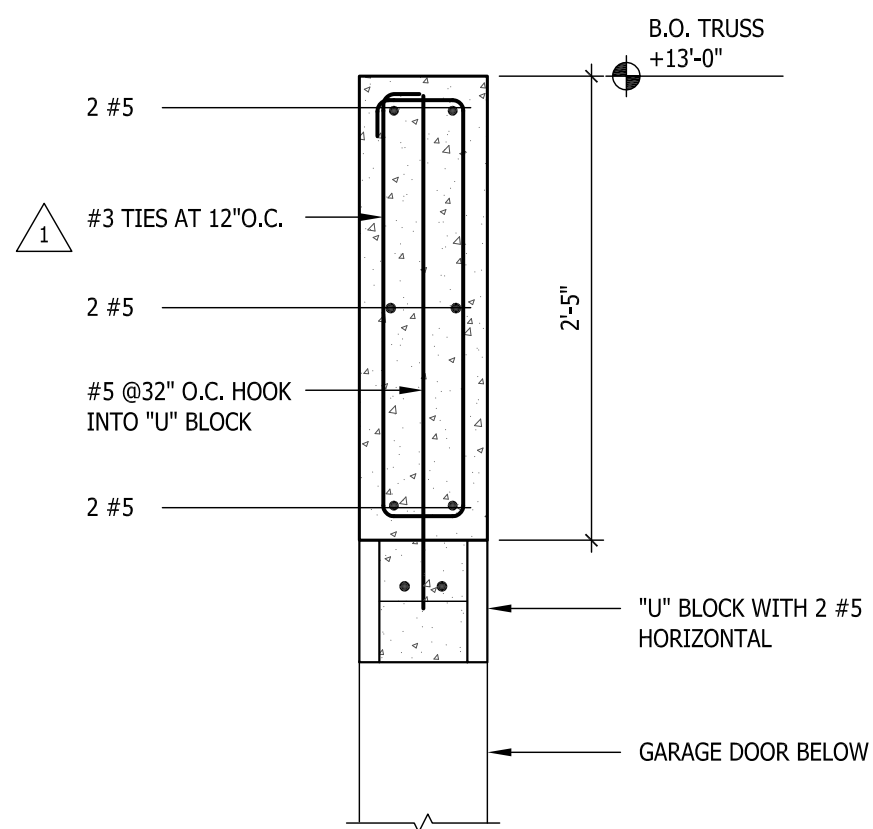


[illegible]



1 MASONRY WALL REINFORCING

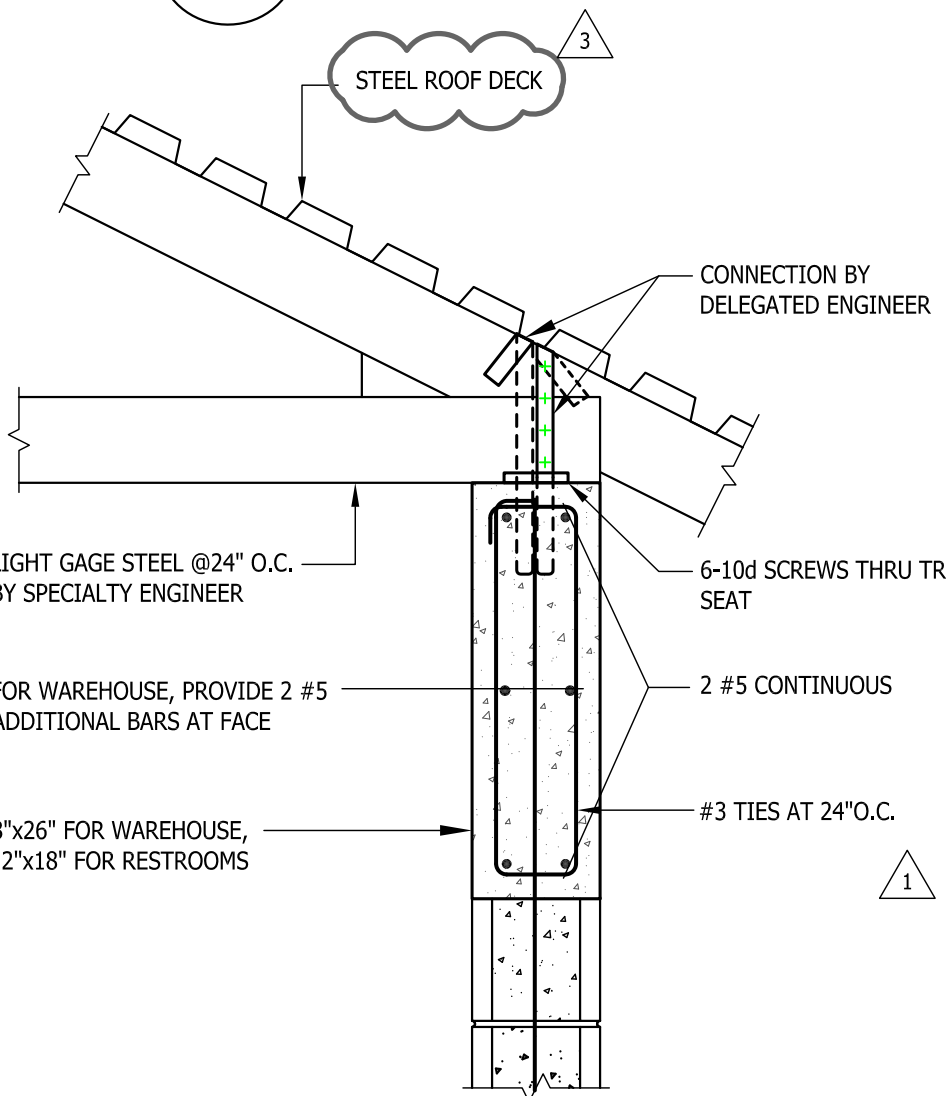
NOT REQUIRED IN UN-REINFORCED WALLS



6 TRUSS CONNECTION TO CMU WALL

TYPES 1 AND 2

2 CONCRETE LINTEL SUPPORT

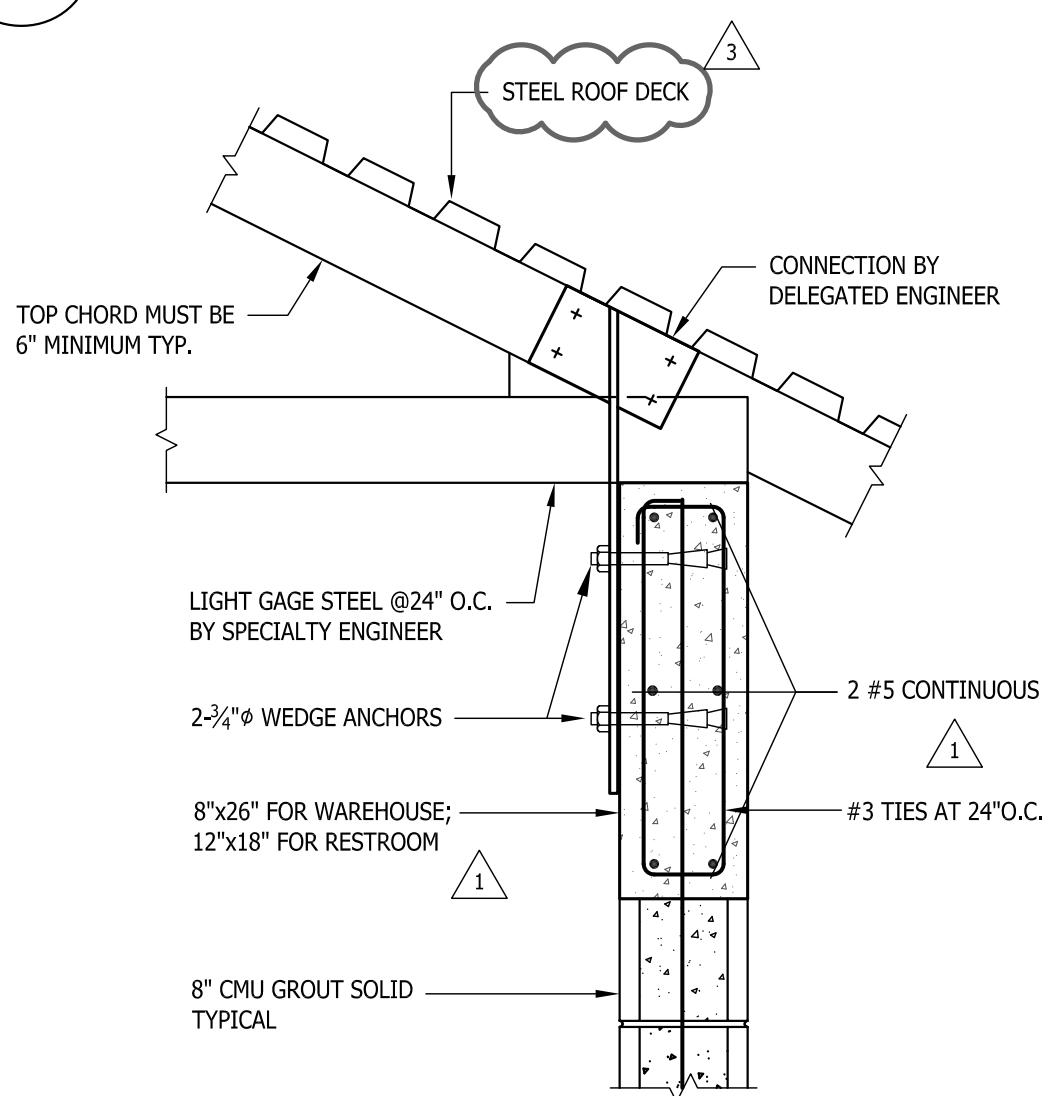


7 TRUSS CONNECTION TO CMU WALL

TYPES 1 AND 2

3 CONCRETE LINTEL SUPPORT

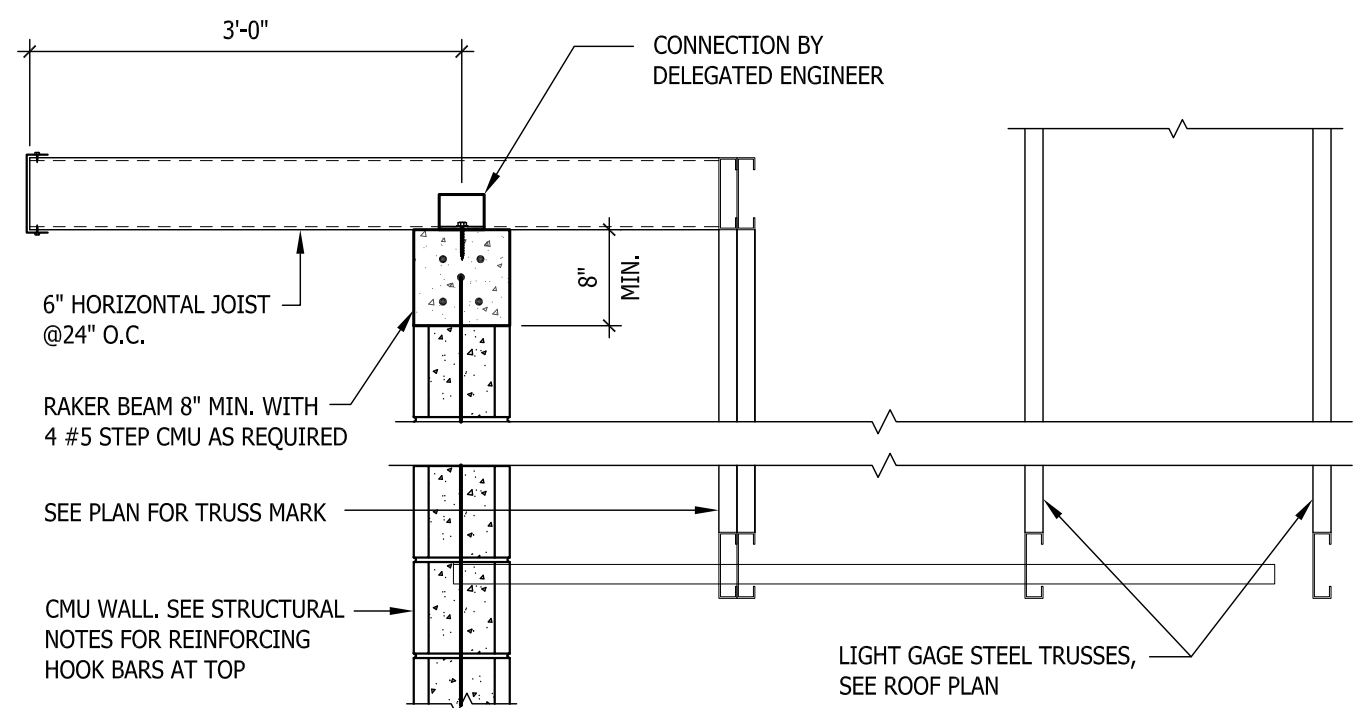
PLAN DETAIL



8 TRUSS CONNECTION TO TOP OF WALL

TYPE 3

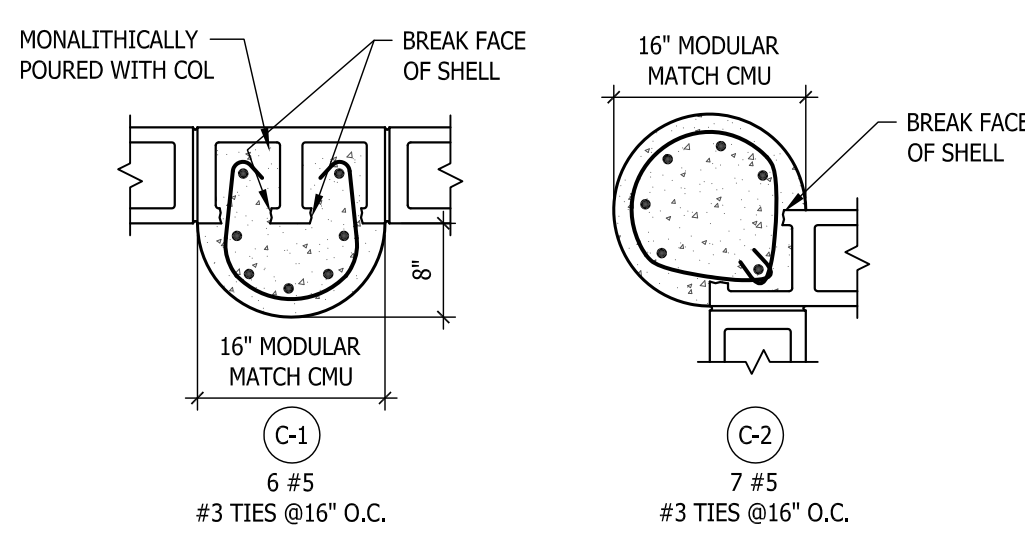
4 TYPICAL MASONRY SILL DETAIL



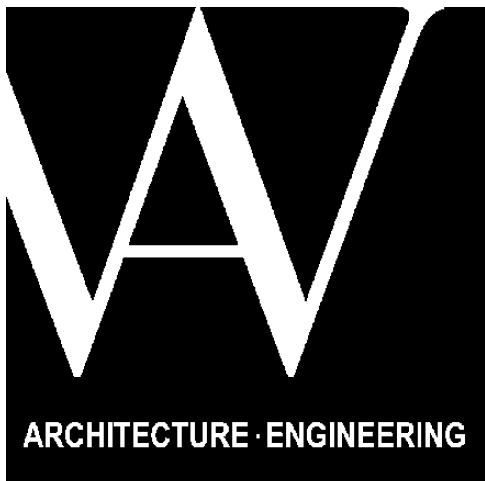
9 TYP. DETAIL @ OVERHANGS

5 TYPICAL LINTEL DETAIL

SEE ARCHITECTURAL DRAWINGS FOR LOCATION



COLUMN TYPE



SEAL

MARCEL R. MORLOTTE, A.I.A.
FL. ARCHITECT
FL. ARCH. REG. NO. 9564

WA PROJECT NO.: 21524.00

ISSUE DATE

05/27/2016

NO.	REVISION DATE
1	06-19-2016
3	07-01-2016

DRAWING TITLE

Masonry Details

SHEET NUMBER


S3.02

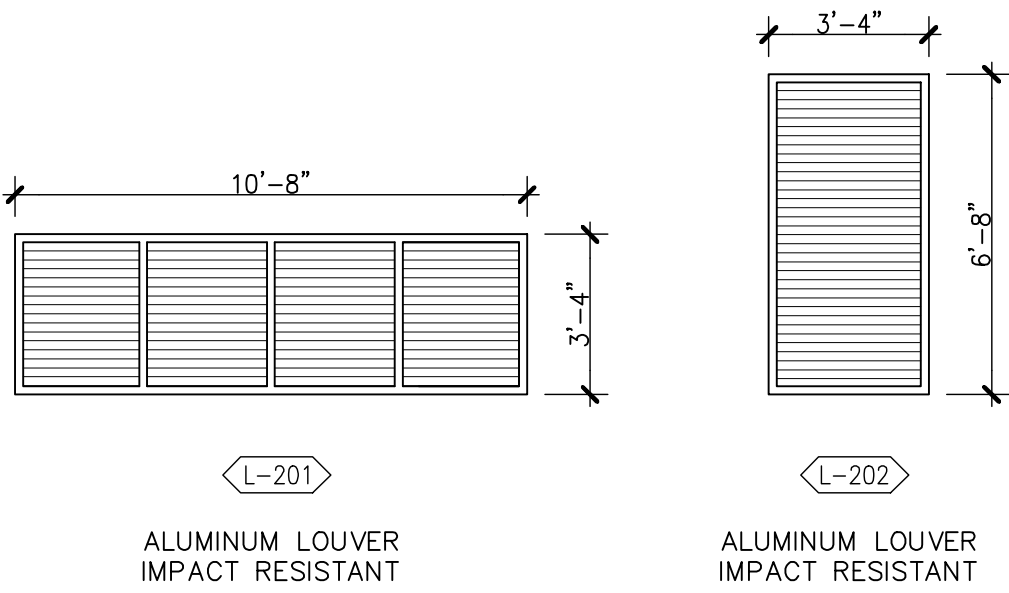
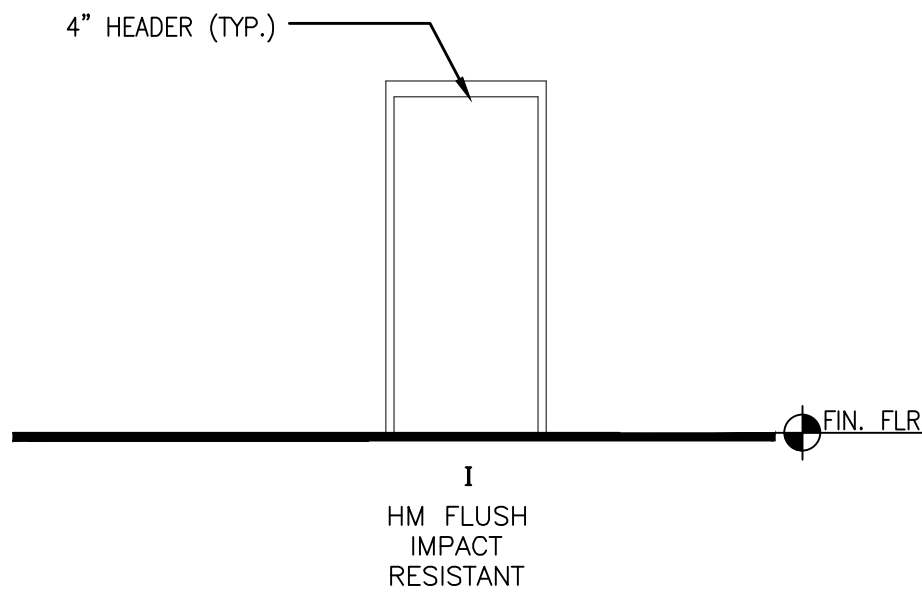
RESTROOM BUILDING								
DOOR TYPE				DOOR SIZE		REQUIREMENTS		
MARK	TYPE	MATERIAL	FRAME	WIDTH X HEIGHT	DETAIL	THREASH	HDWR GROUP	REMARKS
201	I	H.M.	H.M.	3'-0" x 7'-0"	3/A8.02	2/A8.02	4	—
202	I	H.M.	H.M.	3'-0" x 7'-0"	3/A8.02	2/A8.02	4	—
203	I	H.M.	H.M.	3'-0" x 7'-0"	3/A8.02	2/A8.02	1	10"X10" GRILLE
204	I	H.M.	H.M.	3'-0" x 7'-0"	3/A8.02	2/A8.02	1	10"X10" GRILLE

GENERAL DOOR NOTES

1. ALL EXTERIOR DOORS SHALL HAVE MIAMI-DADE COUNTY NOTICE OF ACCEPTANCE (NOA) OR FLORIDA PRODUCT APPROVAL.
2. ALL LABELED AND SMOKE DOORS TO HAVE CLOSER AND POSITIVE LATCH.
3. ALL THRESHOLDS SHALL BE ADA COMPLIANT, APPROVAL (HVHZ) FOR LARGE MISSILE IMPACT RESISTANCE, WIND PRESSURE, AND WATER INFILTRATION
4. PROVIDE 3/4" UNDERCUT AT ALL INTERIOR DOORS UNLESS OTHERWISE NOTED, REQUIREMENTS. REFER TO STRUCTURAL DRAWINGS FOR WIND PRESSURES.
5. FIELD VERIFY SIZE OF EXISTING OPENING. SUBSTRATE/ ATTACHMENT TO COMPLY WITH NOA REQUIREMENTS. VERIFY THAT COILING MECHANISM FITS INTO EXISTING HEADER SPACE.

LOUVER SCHEDULE			
MARK	SIZE (W x H)	TYPE	REMARKS
L-201	10'-8" x 3'-4"	ALUMINUM	
L-202	3'-4" x 6'-8"	ALUMINUM	

- GENERAL NOTES:
1. ALL EXTERIOR LOUVERS ARE RATED FOR IMPACT SHALL COMPLY WITH STATE OF FLORIDA PRODUCT APPROVAL – N.O.A. FOR IMPACT RESISTANCE AND PRESSURE REQUIREMENTS. LARGE MISSILE IMPACT FOR LOUVERS LOCATED UP TO 30'-0" ABOVE GRADE (ANY PART OF THE LOUVER). REFER TO STRUCTURAL DRAWINGS FOR WIND PRESSURES.
2. ALL ALUMINUM SHALL BE POWDER COATED IN COLOR SELECTED BY ARCHITECT.
3. CONTRACTOR TO COORDINATE EXACT ROUGH OPENING REQUIREMENTS W/ N.O.A OF SELECTED MANUFACTURER, DIMENSIONS NOTED ARE NOMINAL AND COURSE WITH CMU UNITS.
4. PROVIDE  SCREENS FOR ALL LOUVERS



ROOM FINISH SCHEDULE						
	DESIGNATION	FLOORS	BASE	WALLS	CEILING	REMARKS
ROOM No:	ROOM NAME	MATERIAL/FINISH	MATERIAL/FINISH	MATERIAL/FINISH	MATERIAL/FINISH	
RESTROOM BUILDING						
201	MEN'S RESTROOM	PORCELAIN TILE	PORCELAIN TILE	PAINTED	MOISTURE RES. GYP.BD./PAINTED	EPOXY PAINT
202	WOMEN'S RESTROOM	PORCELAIN TILE	PORCELAIN TILE	PAINTED	MOISTURE RES. GYP.BD./PAINTED	EPOXY PAINT
203	ELECTRICAL ROOM	SEALED CONCRETE	—	PAINTED	EXPOSED	
204	JANITORS CLOSET	PORCELAIN TILE	PORCELAIN TILE	PAINTED	EXPOSED	