

THE PROS AND CONS OF TATTOOING AND TAGGING

WE REQUIRE A PERMANENT FORM OF IDENTIFICATION FOR EACH ANIMAL REGISTERED WITH THE IDGR-IFBR.

THIS HELPS ENSURE THE ACCURACY OF YOUR PEDIGREES, AND ALSO HELPS KEEP TRACK OF ANIMALS AS THEY MOVE BETWEEN LOCATIONS. WE ALLOW THREE METHODS OF PERMANENT IDENTIFICATION:

- TATTOO
- MICROCHIP
- SCRAPIE TAG.

TATTOOING

PROS- INEXPENSIVE, RELATIVELY QUICK. CAN BE USED IN LAMANCHA (TAILWEB). MOST COMMON FOR DAIRY

BREEDS

CONS- CAN BE DIFFICULT TO READ AT TIMES, MAY FADE WITH TIME. CAN BE DIFFICULT FOR LAMANCHA TYPE GOATS. SOME SKILL REQUIRED

EAR TAGGING

PROS- INEXPENSIVE (GOVERNMENT SUPPLIED EAR TAGS), QUICK, LOW SKILL LEVEL. EASY TO READ. MOST COMMON FOR MEAT/FIBER BREEDS

CONS- MUST REGISTER YOUR FARM WITH THE USDA TO PARTICIPATE IN THE PROGRAM. TAGS CAN COME OR BE TORN OUT OF EARS. CANNOT USE IN LAMANCHA

MICROCHIP

PROS- EASY TO USE, QUICK, LESS PAINFUL THAN TATTOOING. CAN BE USED IN LAMANCHA. EASY TO READ

CONS- MORE EXPENSIVE, MUST HAVE MICROCHIP READER TO USE, CHIPS CAN MIGRATE AND DISAPPEAR OCCASIONALLY.

WHERE TO PURCHASE TATTOOS AND INK?

WE RECOMMEND ORDERING YOUR TATTOO SUPPLIES ONLINE AT A LIVESTOCK RETAILER SUCH AS JEFFERS, HOEGGER, VALLEYVET, OR CAPRINESUPPLY.

WHAT YEAR IS IT?

THE FOLLOWING LETTERS ARE ASSIGNED TO THESE YEARS

2014 E

2015 F

2016 H

2017 J

2018 K

2019 L

2020 M

WE LOOK FORWARD TO SERVING YOU !

WWW.IDGR-IFBR.COM
P.O. Box 114 RYDAL, GA 30171
202-570-IDGR

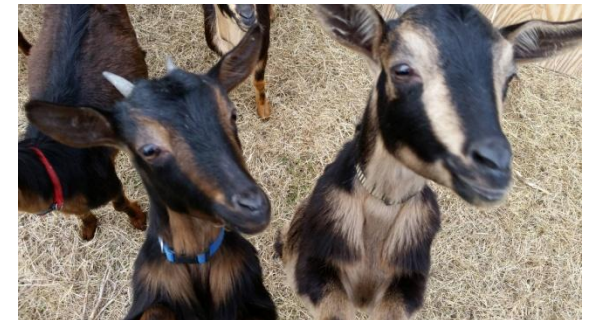


IDGR-IFBR



TATTOOING AND PERMANENT IDENTIFICATION METHODS

WWW.IDGR-IFBR.COM
202-570-IDGR (4347)
IDGREGISTRY@GMAIL.COM



"FOR BETTER BREEDING"

OUR HISTORY
HOW TO TATTOO

IDGR-IFBR PROVIDES QUALITY, ACCURATE, AFFORDABLE GOAT AND SHEEP REGISTRY SERVICE SINCE 1980

BY CONVENTION, THE REGISTERED HERD TATTOO IS PLACED IN THE RIGHT EAR, THE ANIMAL SPECIFIC TATTOO SHOULD BE PLACED IN THE LEFT. THE ANIMAL SPECIFIC TATTOO CONTAINS A LETTER (DESIGNATED BY THE YEAR) FOLLOWED BY A SEQUENTIAL NUMBER FOR THAT ANIMAL. IN 2010, THE YEAR LETTER IS "A", SO THE FIRST KID BORN IN 2010 WOULD BE "A1", THE SECOND KID "A2", AND SO FORTH. THE LETTERS I, O, Q, AND U ARE NOT USED.

EVERY KID SHOULD BE TATTOOED SHORTLY AFTER BIRTH. TO DO SO YOU WILL NEED:

- PLIERS STYLE TATTOOER
- INK (DARK GREEN OR OTHER COLOR)
- RUBBER GLOVES
- ALCOHOL
- PAPER TOWELS
- TOOTHBRUSH

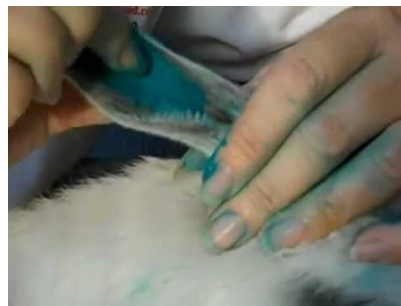
1. HOLD THE ANIMAL SECURELY. KIDS CAN EASILY BE DONE BY USING A BUDDING BOX.
2. CLEAN THE EAR WITH ALCOHOL AND A TOWEL OR COTTON BALL TO REMOVE THE WAX AND DIRT (LAMANCHAS ARE DONE IN THE THIN TAIL WEBBING AT THE BASE OF THE TAIL)
3. USING PLIERS TATTOOS, INSERT THE CORRECT SYMBOLS (CHECKING THE

TATTOO BY IMPRESSING IT ON A SHEET OF PAPER).

4. SMEAR TATTOO INK ON THE SKIN WHERE THE TATTOO WILL BE PLACED, FREE FROM WARTS/FRECKLES/VEINS.
5. PLACE THE PLIERS PARALLEL TO AND BETWEEN THE VEINS OR CARTILAGE RIDGES OF THE EAR.



6. MAKE THE IMPRINT WITH A QUICK, SMOOTH CLOSING OF THE PLIERS. IMMEDIATELY RELEASE THE PLIERS AND APPLY ADDITIONAL TATTOO INK TO THE EAR, RUBBING VIGOROUSLY WITH A GLOVED HAND OR SOFT BRISTLE TOOTHBRUSH.



7. DO NOT DISTURB THE TATTOOED AREA UNTIL HEALED.

TATTOO COLOR IS UNIMPORTANT. DARK GREEN PIGMENTS ARE PREFERABLE ON DARKER PIGMENTED ANIMALS.

SCRAPIE TAGS

THE SCRAPIES ERADICATION PROGRAM IS A FEDERAL PROGRAM RUN BY THE USDA. TO FIND OUT MORE ABOUT THE PROGRAM AND TO ENROLL YOUR FARM TO RECEIVE EARTAGS PLEASE VISIT WWW.ERADICATESCRAPIE.ORG

MICROCHIPPING

MICROCHIPPING MUST BE DONE WITH A 15-DIGIT RFID CHIP. PLEASE NOTE THAT SOME MANUFACTURERS PRODUCE 9-DIGIT RFID CHIPS, THESE CANNOT BE USED FOR IDENTIFICATION PURPOSES IN GOATS, SHEEP, OR ALPACAS.

MICROCHIPS SHOULD BE PLACED AT THE BASE OF THE LEFT EAR OR ALTERNATIVELY AT THE BASE OF THE LEFT TAILWEB. PLACEMENT SHOULD BE INDICATED ON THE APPLICATION. YOU SHOULD ALWAYS READ THE CHIP AFTER PLACEMENT TO ENSURE THE PROPER NUMBER IS PLACED IN THE CORRECT ANIMAL.

INTERNATIONAL DAIRY GOAT REGISTRY -
INTERNATIONAL FIBER BREED REGISTRY
P.O. BOX 114 RYDAL, GA 30171
WWW.IDGR-IFBR.COM
202-570-IDGR